

# The HILLS HOWLER



October 2016

[www.hillsdogclub.com](http://www.hillsdogclub.com)

<https://www.facebook.com/hillsdogclub>

## Upcoming Meeting Dates

12th October  
9th November  
14th December

8th February  
8th March  
12th April

## K9 Companion Award

Monday 14th November

&

Tuesday 22nd November



Do you want to receive your Howler via email?

Email: [hillshowler@gmail.com](mailto:hillshowler@gmail.com)

## Hills Dog Club Inc 2016 Committee

**President:** Pauline Hartwell Mb: 0409 906 374 E: hartwyn@bigpond.com.au

**Vice President:** Kellie Neville Mb: 0408 027 874 E: neville\_200@hotmail.com

**Vice President:** David Hutchins Mb: 0412 245 999 E: davidehutchins@ozemail.com.au

**Secretary:** Vicki Gresser Ph: 9871 5734 E: vicki.gresser@optusnet.com.au

**Assistant Secretary:** Deidre O'Brien Ph: 9654 9171 E: obrien.hamely28@bigpond.com

**Treasurer:** Lynne Sheather Ph: 9634 1497 E: lshe4963@bigpond.net.au

**Assistant Treasurer:** Janet Power Ph: 9639 9987 E: powerjanet@optusnet.com.au

**Chief Instructor:** Dianne Atkins Ph: 9654 3833 E: diatkins@bigpond.net.au

**Trial Secretary:** Tiki Freizer Mb: 0419 488 493

**Show Secretary:** Janet Power Mb: 0419 313 848

**Committee:** Anne Small Mb: 0417 414 877

Judith Stanley Ph: 9868 5912

Kathy Cocks Mb: 0411 892 329

Shirley Tulk Mb: 0417 282 218

Natalie Conway Mb: 0404 878 940

Peter Guenther Ph: 9634 6876

**Public Officer:** Vicki Gresser Ph: 9871 5734

**Publicity Officer:** Kellie Neville Mb: 0408 027 874 E: hillshowler@gmail.com

**Equipment Officer:** Luke Perfect Mb: 0409 118 458 E: alwaysperfect@optusnet.com.au

**Education Officer:** Dianne Atkins Ph: 9654 3833 E: diatkins@bigpond.net.au

**Registrar:** Jody Smith Mb: 0418 169 656 E: jawsmith@bigpond.com

**Auditor:** Mr T Newton

**Patron:** Mrs Betty Stepkovitch

**Trophy Stewards:** **Trial**—Kerry Richards and Janice Lyons      **Show**—Pauline Hartwell and Samantha Ibbott-Cordi

**Club Trophy Steward:** Genevieve Young Mb: 0419 161 042 E: genevieve.young@optusnet.com.au

**Life Members:** Peter Guenther, \*Hazel Baldwin(\*deceased), Dianne Atkins, Janet Power, Belvane Parsons,

Anne Small, Betty Cansdale, Robyn Jones, Janice Lyons, Vicki Gresser, Lynne Sheather



Notice is given of the **General Meeting** of the Hills Dog Club Inc.  
to be held on  
**Wednesday 12th October 2016,**  
in the Meeting Rooms, at Castle Hill Showground.  
Commencing at 7:30 p.m.  
Everyone is welcome to attend.

**Agenda:**

- 1 Open Meeting
- 2 Apologies
- 3 New Members
- 4 Confirmation of minutes of the previous  
General Meeting
- 5 Business arising from the minutes
- 6 Correspondence
- 7 Obedience Trial Judges Elections

- 8 Presidents Report
- 9 Secretary's Report
- 10 Treasurer's Report
- 11 Other Reports
- 12 Sub-Committee Report
- 13 Committee Recommendations
- 14 General Business

**IMPORTANT NOTICE**

**TUESDAY TRAINING:**

**Tuesday 27th September & Tuesday 4th October  
NO TRAINING DUE TO SCHOOL HOLIDAYS**

**MONDAY TRAINING:**

**Monday 3rd October  
NO TRAINING DUE TO PUBLIC HOLIDAY**

**- FREE MEMBERS BOARD -**

The Club has decided to include a FREE notice board column in the Howler each month for club members. This will be a maximum of 3 lines for one (1) month and will be non commercial.

**- MEMBERS PLEASE NOTE -**

The Hills Howler newsletter is written by members, for members. The views expressed here are not necessarily the views of the Hills Dog Club Inc. and the club does not accept responsibility for any information, articles or advice published.

**- NOTICE BOARD -**

Leave your dog "on lead" at all times unless your instructor requests otherwise.

Please bring correct money to training for ground fees.

No thongs or bare feet in classes. Closed shoes are preferable and safer.

Please wear your membership card at all times. It makes everyone`s life easier!

All dogs on the training grounds must be vaccinated under Club rules.

Bitches in season are not permitted to attend class. You may still come and watch, but she may not.

Yes, training is on when it rains. Bring a raincoat and wear boots. If it is very wet we will train under the covered ring.

**FORGOT TO BRING TREATS TO TRAINING?**

Don't worry! We have lamb treats for sale at the office for just \$5 a bag.

**All correspondence to:**

The Secretary,  
Hills Dog Club Inc.  
56/159 Ridgescrop Drive,  
Castle Hill NSW 2154

**FOR NOTICE OF CLASS CANCELLATION**

In the event of extreme weather conditions (heat or rain)

Go to:

[www.hillsdogclub.com](http://www.hillsdogclub.com)  
OR find us on Facebook:  
[www.facebook.com/hillsdogclub](http://www.facebook.com/hillsdogclub)

Pages updated  
Monday 4pm & Tuesday 8:45am

**Election of Judges**

To take place at the following Meetings:

October  
(May and November Trials)

# Hills Dog Club Inc

## TRAINING TIMES

Monday 7pm Puppies, Beginners, Graduate & Advanced  
8pm Triallers

**Puppy classes are for dogs 12-20 weeks.** NO CLASSES HELD ON PUBLIC HOLIDAYS

Tuesday 10.30am All Classes NO TUESDAY CLASSES HELD IN SCHOOL HOLIDAYS

## CLUB MEETINGS

The club meets monthly on the 2nd Wednesday of the month, except January, in the clubhouse. Meetings start at 7.30pm. All welcome! Tea and coffee provided. Club financial year is 1st January to 31st December.

## CORRESPONDENCE

All Club correspondence or enquires should be addressed in writing to The Secretary, 56/169 Ridgeway Drive, Castle Hill, NSW, 2154.

## NEWSLETTER

Hills Howler is available at the clubhouse on training days/nights and online. All members are encouraged to contribute.

# GROUND RULES

1. As a condition of membership, all dogs are required to be properly vaccinated according to current veterinary guidelines.
2. Members are responsible at all times for the behaviour of their dog/s whilst present on the training grounds or representing the club.
3. All dogs must have properly fitted equipment and remain on lead at all times (unless instructed otherwise by a Club Instructor). No check/choker chains are to be used on any dogs in puppy, beginners or graduation classes.
4. A member shall not ill-treat a dog at any time. Any such action may give rise to the suspension or expulsion from the Club by resolution of the Committee.
5. Bitches in season and/or dog/s with an un-well or infectious condition are not permitted on the obedience training grounds.
6. Members are to pick up after their dog/s and help keep the training grounds clean and tidy.
7. Adequate sensible dress with appropriate footwear (no thongs, scuffs or bare feet) is required to be worn by Handler during training.
8. Dogs are not to be left unattended whilst on the training grounds unless crated or tethered in a safe area. Members are reminded not to approach dogs that are confined. All dogs are to be kept under control and supervised while at the counter or in the clubhouse.
9. The Club reserves the right to ask any member to muzzle or in extreme cases remove their dog/s from the training grounds. If a muzzle is required this must remain in place whilst on the Club grounds. This will be at the discretion of the Committee.
10. Members who use Club equipment must ensure it is returned to the storeroom and stored correctly, after classes are conducted.
11. Children are welcome to attend classes provided they are supervised by an adult/parent/guardian at all times.
12. Child members (aged 7 to 11 are to be accompanied by an adult/parent/guardian in classes) and Junior members (aged 12 to 15 under adult/parent/guardian supervision on grounds) are welcome to train providing they have sufficient control of their dog during classes. This will be at the discretion of the class/chief instructor.

# Promotions

## Beginners to Graduate

Marilyn Courts with Meika the Cavlier King Charles Spaniel (Monday Class)  
Jenny Lingley with Lucy the Border Collie (Monday Class)

## Graduate to Advanced

Toni Patterson with Kasey the Golden Retriever (Tuesday Class)



# TEAMWORK

Coming together is a beginning... Keeping together is progress... Working together is a success.

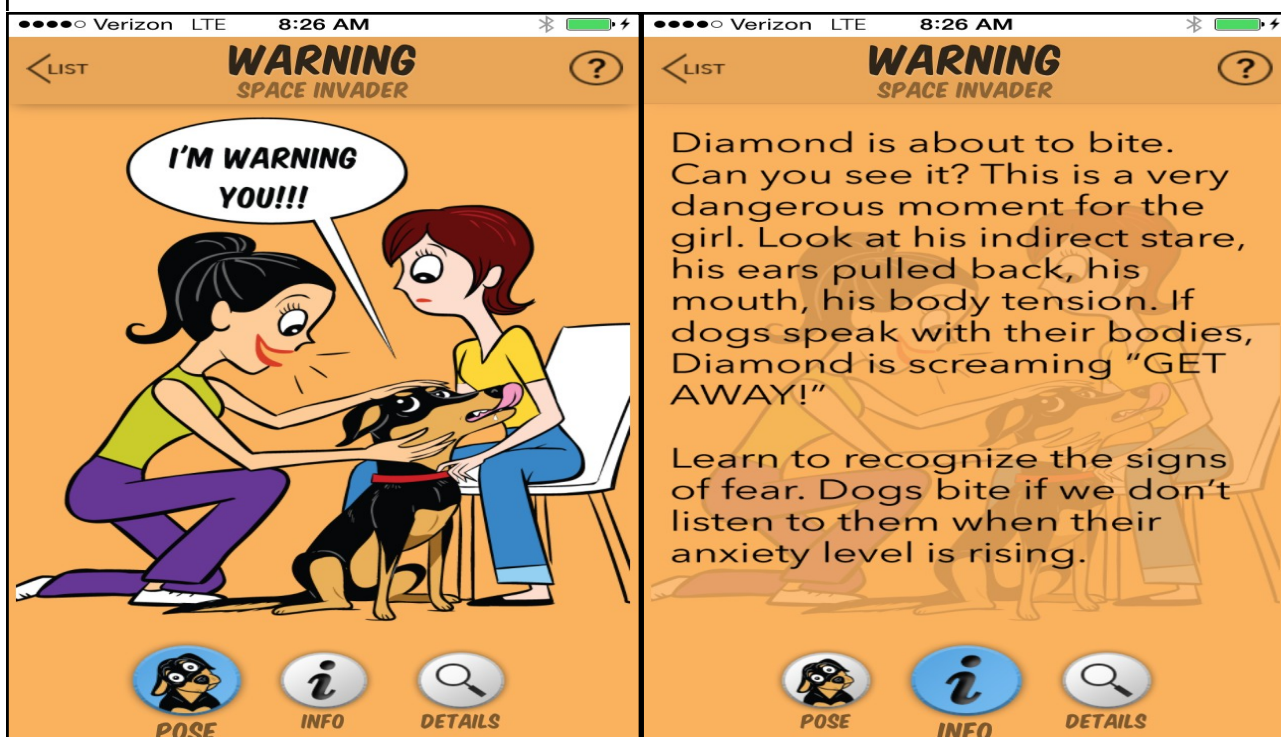
# Dog Decoder App Helps You Understand Dog Body Language In A Snap

By Jill Breitner, owner of DogDecoder Smartphone App.



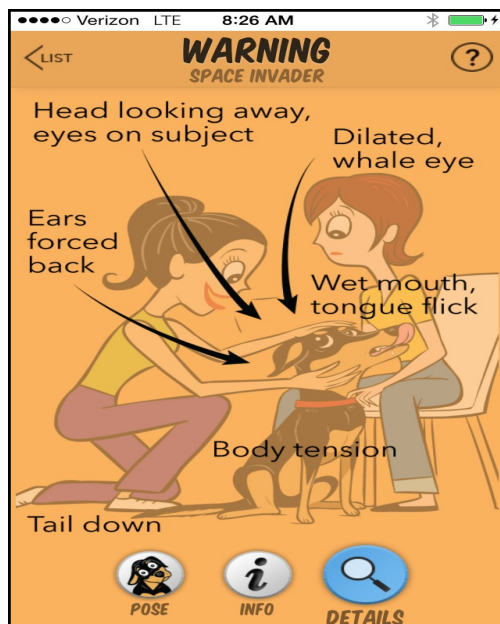
For many, being able to read a dog's body language on the fly is very hard. But you can't always bring your book or your posters with you wherever you and your pooch go.

Thanks to technology, I was able to develop an app called [Dog Decoder](#), ready to use right when you need it. This was an outgrowth of my passion to help owners understand the nature of dogs. The app is colourfully and lovingly illustrated by Lili Chin of [Doggie Drawings](#). You definitely know Lili's work as the illustrator of choice for Dr. Sophia Yin's posters on *The Body Language of Fear*, *How to Greet a Dog and What to Avoid*, as well as in Dr. Yin's workbook and books. Our developer, Jeff Belsey, is a Webby Award winning developer who helped bring this product together. As you can see below, not only does the Dog Decoder talk about familiar situations to all dog owners and caregivers, but it also breaks down each body language point in a simple, easy to follow fashion and it's all on your own smartphone, iPad or tablet.



This app is for all people who love and work with dogs – veterinarians and their staff, rescue/shelter workers, breeders, teachers, parents, groomers, dog day care centres and trainers – to have an on the spot teaching tool in the palm of their hands.

Our mission for this app is to teach people how to understand what dogs are trying so hard to tell us. If people can realize when their dog is stressed, excited or afraid, fewer people will be bitten and fewer dogs will end up in shelters and re-homed again and again or worse, euthanized.



It is also our mission to have the app in all shelters, vet hospitals, elementary school curricula, children's educational programs and dog training associations, etc., worldwide in the name of humane education and safety between humans and dogs.

It has been endorsed by the President of the American College of Veterinary Behaviourists, John Ciribassi, DVM and many others. Dr. Sophia Yin was also very excited about the app.

Our app was featured on The Hallmark Channel on The Home and Family Show for the **Stop the 77** campaign about dog bite prevention.

Dog Decoder is available through [iTunes](#), as well as on [Google Play](#).

What are people saying about Dog Decoder?

**John Ciribassi, DVM Diplomate, American College of Veterinary Behaviourists:** *I really like the app. Very simple, easy to use, accurate and the drawings are great. The format where you see the situation then an explanation then a description of the body posture with labels is a great progression for learning. There is also a quiz section that tests your knowledge.*

**Marjorie:** *It's like having a trainer in your pocket.*

**Glenda:** *The subtlety of reading dog body language is clearly explained in this app. This is information everybody should have in their lexicon of meaning...great for kids, a must for parents and essential for dog lovers. Presented in an easily understood and simply accessed form. Check it out!*

**Nancy Kay, DVM:** *I love this app! With simplicity and a fabulous sense of humour, Dog Decoder provides wonderful guidance in the interpretation of canine body language. Not only does our understanding of canine communication support the dog, it also may go a long way in the prevention of injuries inflicted by dogs. Kudos to the creators of this app.*

**Clinical Animal Behavior Service-UC Davis School of Veterinary Medicine:** *This is great for kids and good for adults who want to understand their pet.*

We hope you'll check it out, and use it to learn and teach.

Dog Decoder Team



# Stay Connected With Hills

## Hills Dog Club Community Page

<https://www.facebook.com/hillsdogclub/>

Click: **Like**

Notifications: **Follow**

Please Note: **All you need is a internet connection to view this page**



## Hills Dog Club Members

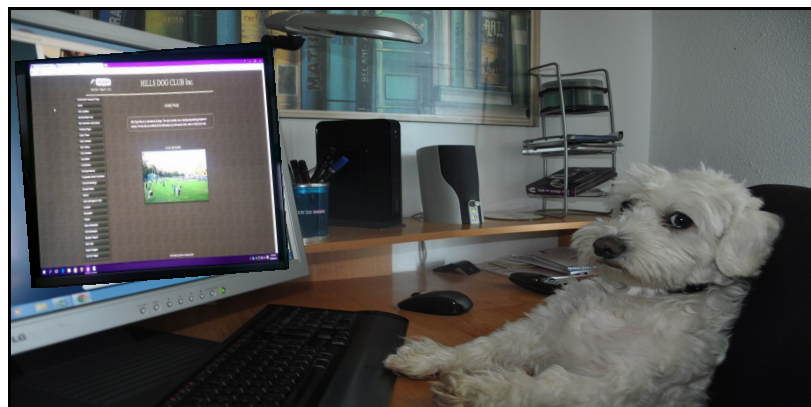
<https://www.facebook.com/groups/162308877129471/>

Click: **Ask to Join**

Please Note: **Admin will ask to confirm Membership**

## Hills Dog Club Webpage

<http://www.hillsdogclub.com/>



# Trick or Treat

**Guess how many treats are in the Jar to WIN!**

**Post in the comment box below on:  
<https://www.facebook.com/hillsdogclub/>**

**Guess how many treats are in the jar to win a  
bag of Hills Science Dog Food!**

## Good Luck!





## 5 Safety Tips Taking Your Dog Trick or Treating



- 1) Keep an eye on your dog. Pay attention to your dog's behavior and temperament at all times.
- 2) Halloween candies are hazardous to your dog. Chocolate is extremely toxic. Watch out for any candy droppings on the ground.
- 3) Dressing up in costume is fun but don't force it if your dog resists.
- 4) Have your dog on a leash at all times. Be sure that your dog is wearing an identification tag.
- 5) Have Fun and Be Safe.



© Golden Woofs: [sugarthegoldenretriever.com](http://sugarthegoldenretriever.com)

# Doggedly Writing – Part 2

By Genevieve Young, with special thanks to Ingrid Bauer & Ivanka Fleming.



metaphordogs.com

Dr Seuss's famous picture of "Raining Cats and Dogs" is one of the nicer English language idioms about dogs. You can probably think of a hundred more.

But are all dog idioms complimentary to dogs? In researching this, I discovered that dog idioms tend to refer to the "lowly" status of dogs, their apparent lack of worth and similar negative sentiments. It is also fascinating that many foreign language dog idioms are remarkably similar to our own.

Continuing from last month, here are some more wonderful dog idioms from around the globe.

## German

*Armer Hund* – poor devil!

*Blöder Hund* – idiot!

*So ein blöder Hund* - what a stupid fool

*Vor die Hunde gehen* – go to the dogs

*Wie Hund und Katze leben* – to fight like cat and dog

*(Ganz) auf dem Hund sein* – be in a real mess/a wreck

*Da liegt der Hund begraben* – that's why!

*Das ist ein dicker Hund* – that's a bit thick!

*Er ist bekannt wie ein bunter Hund* – everybody knows him

*Hunde die viel bellen, beißen nicht* – barking dogs seldom bite

*Damit kann man keinen Hund hinter den Ofen hervorlocken* – who's interested in that?

*Hundeaugen* – faithful (big) eyes

*Sich Hundeeleud fühlen* – feel rotten/lousy

*Hundefraß* – muck, food not worth eating



## German, continued

*Es ist hundekalt* – it is freezing cold

*Ein Hundeleben* – lead a dog's life

*Hundemüde* – to be dog-tired



## KOREAN

### 똥 묻은 개가 겨 묻은 개 나무란다

A dog with faeces scolds a dog with husks of grain.

Meaning similar to: People who live in glass houses shouldn't throw stones.

## Portuguese

*Quem não tem cão caça com gato*

He who doesn't have a dog hunts with a cat, meaning you make the most of what you've got.

## CROATIAN

*Pas je najbolji čovjekov prijatelj* - Dog is mans' best friend

*Pas koji laje, ne grize* - Barking dogs seldom bite

*Mi o vuku* - To talk about the wolf: similar to 'speak of the devil'

*Mi o vuku, a vuk na vrata* - While we were talking about the wolf he came to our doorstep, meaning 'action instead of talking'



www.pinterest.com

## Romanian

*a tăia frunză la câini*

Literally: to cut leaves for the dogs, meaning to be lazy; to waste time

*khəŋ muəŋ ...*

(northern thai)

လူငါး ယူငါး ဂျင် - လူငါး လိုက် ငါး ငါး

# French

## **Il fait un temps de chien**

*It's such dog weather (used to describe a very bad weather)*

## **Etre trempé comme un chien**

*To be wet like a dog (means to be soaked, if you are walking without an umbrella while it's raining)*

## **Les chiens ne font pas des chats**

*Dogs don't have cats (used to say that a child looks like his parents)*

## **Etre comme chien et chat**

*To be like cats and dogs, to describe people, usually sisters and brothers, who are always fighting*

## **Mener une vie de chien**

*To lead a dog life (to have a miserable life, to be poor)*

## **Avoir un mal de chien**

*To have a dog ache, used when something hurts you and it's painful, but also when you have had some difficulties in achieving something*

## **Etre malade comme un chien**

*To be sick like a dog, used when you are very sick*

## **Chien qui aboie ne mord pas**

*Dogs bark but don't bite  
(and to describe people who talk without acting)*



**Entre chien et loup.** *This poetic idiom, which translates as 'between dog and wolf' refers to the last few hours of light at the end of a day: a time when it might be hard to distinguish between a dog and a wolf.*

## MANDARIN

TO BEAT A DOG THAT'S FALLEN IN THE WATER.  
TO KICK SOMEONE WHILE THEY'RE DOWN, TO ADD TO SOMEONE'S MISFORTUNES.

## CANTONESE

落狗屎 (lohk gáusí) **DOG POO IS FALLING** (informal Chinese)

狗屎运 (gǒu shǐ yùn) **DOG-S\*\*\* LUCK** – this phrase actually describes a great, not terrible, turn of events. It is a throwback to the days in rural China, when excrement was used as fertilizer and there was not enough supply to meet demand. Dog s\*\*\* could be sold for cash or used to grow crops; either way, accidentally stepping in it was a source of joy, not sorrow.



## Haitian Creole

Chyen ap bwe nan nen.

(Dogs are drinking in their noses -----a flood is coming down.)

## Arabic

مايتعدل عمره الكلب دي

4 **tail will never straighten or**

4 **Leopard can not change its spots**

## Spanish

*Es el mismo perro con diferente collar.* (It's the same dog with a different collar – nothing much has changed – same old, same old.)

*A perro flaco, todo se le vuelven pulgas.* (For a skinny dog, everything looks like fleas.) People use this expression when someone is not feeling well and everything and anything looks cumbersome and daunting.

*Perro ladrador, poco mordedor.* (Dogs that bark don't bite.)

# develop your relationship with your dog

by improving your play skills –  
using toys, food or simply...you!





**HILLS DOG CLUB INC.**



*K9 Companion Award*

Have you reached Class 8 or higher in your training and your dog is at least 12mths old.

**You could be eligible to be assessed for the K9 Companion Award!!**

There are 12 Elements to be achieved including a questionnaire on responsible dog ownership followed by the Assessment. Together with your dog you will do a number of exercises relating to Road Safety, lead walking, politeness around people and dogs, handling & grooming, achieving sit-drop-stand positions and coming when called, stay, taking food gently and finally a simple Rally course.

**Talk with your Instructor for more Information and if interested a full detailed Assessment application can be acquired at the office.**

Assessment dates will be advertised in the Howler at approximately 3 monthly intervals.

**NEXT ASSESSMENT:**

**Monday 14th November, 2016 @ 7pm**

**&**

**Tuesday 22nd November, 2016 @ 10am**

**Closing Date: Tuesday 1st November, 2016**



# OBF 2016





**THANK-YOU to EVERYONE (2 legged & 4 legged) who gave their time to make the Orange Blossom Festival weekend such a monumental & enormous successful event for the Club. We showcased what our fantastic Club has and continues to offer the Community. If it wasn't for everyone pitching in and doing what Hills does best this wouldn't have been made possible. It was an enormous effort.**

**Thank-you, Kellie x**



**CONGRATULATIONS Hills Dog Club for being awarded 2nd place in the 2016 Sydney Hills Awards for Community Contribution & Service. You all should be so proud of the recognition from the Hills Shire Council & the Hills Shire Community.**

**HILLS DOG CLUB Inc.**

**Introducing**

**The**

***K9 Companion Award***

**An Assessment for Club Members only**

Hills has introduced a K9 Companion Award for Club members with dogs in Class 8 or above and will hold Assessments as follows.

**Monday Night**

**Tuesday Morning**

The following elements are essential to undertake the test:

- Dogs must be at least 12 months of age. They must have completed our Beginner Course or be in Class 8 (or higher) of the Club's Course.
- Proof of Council registration/microchipping and a current vaccination or equivalent certificate.
- The dog should be presented in a clean and tidy manner.
- The dog should be fitted with an appropriate collar or restraint for that dog (i.e. collar, gentle collar, head collar and harness), and be on a leash. **Note – No check chains are to be used.**
- The Handler must carry a plastic bag at all times to clean up after his/her dog.
- Training treats are not to be given during exercises. Verbal praise is, however, permitted.
- The Handler may offer food rewards at the finish of each individual exercise.
- A number of both verbal and hand cues are permitted during exercises.
- The Handler must have an 80% pass rate on the theory assessment and 100% on the practical assessment.
- If you do not achieve 100% in your practical assessment, you will be able to re-sit the practical test without charge when the next K9 Assessments are held.
- The cost of the assessment is \$20.00

**For full details of the Award and information on exercises talk with your Class Instructor**

Please Hand this form into the office at least 3 weeks before the test date with your \$20.00 fee

Name of Handler: \_\_\_\_\_

Dogs Name: \_\_\_\_\_

Phone number & email address: \_\_\_\_\_

Paid \_\_\_\_\_



## Hills Dog Club Inc.

### COMPLETE THIS FORM for CATEGORY 2

#### MEMBERS TROPHY FOR NEW TITLES GAINED IN 2016

Any dog that has gained a title during 2016 is entitled to receive a trophy recognising this achievement.

#### PRESENTATION OF TROPHIES

Members need to attend the 2017 A.G.M. to accept the trophy on behalf of their dog.

OWNER'S NAME \_\_\_\_\_

DOG'S NAME \_\_\_\_\_

(Include Kennel name, and other titles if applicable)

TITLES GAINED \_\_\_\_\_

(in the order gained)

NB: Multiple titles gained during the year will be engraved on a single trophy with the exception of Champion or Grand Champion, which will be presented as an individual trophy.

*Please attach proof of title (e.g., copy of certificate or amended registration certificate).*

**This form must be returned by 31 December 2016.**

It may be handed in on the Training Ground at the counter, or given to Genevieve Young, or posted to:

The Secretary

Hills Dog Club Inc.

56/159 Ridgescrop Drive, CASTLE HILL, NSW, 2154

**COMPLETE THIS FORM for CATEGORY 1**

**OBEDIENCE & RALLY O ACHIEVEMENTS & PERPETUAL TROPHIES AWARDS**

Name of Dog \_\_\_\_\_ Breed \_\_\_\_\_

| Trial | Date | Class | Points | Cat No. | Office Use |
|-------|------|-------|--------|---------|------------|
|       |      |       |        |         |            |
|       |      |       |        |         |            |
|       |      |       |        |         |            |
|       |      |       |        |         |            |
|       |      |       |        |         |            |
|       |      |       |        |         |            |
|       |      |       |        |         |            |

TOTAL POINTS: \_\_\_\_\_ (not needed for Dianne Atkins Trophy)

**Please tick box for Trophy and/or Medallion applied for:**

- |  |   |
|--|---|
| <input type="checkbox"/> Abbey Memorial Trophy (CCD)   | <input type="checkbox"/> Hazel Baldwin Trophy (Novice)                |
| <input type="checkbox"/> Hilda Smythe Trophy (Open)  | <input type="checkbox"/> Barry Langdon Trophy (UD)                    |
| <input type="checkbox"/> Karen Valeschini Memorial Trophy (Open & UD)                                  | <input type="checkbox"/> Hills Dog Club Perpetual Trophy (UDX)        |
| <input type="checkbox"/> Dianne Atkins Perpetual Trophy<br>(Highest Achievement in Canine Competition) | <input type="checkbox"/> Iris Bollinger Perpetual Trophy<br>(Rally O) |

**Medallion:**            Gold             Silver             Bronze

Member's name: \_\_\_\_\_

Address: \_\_\_\_\_

Postcode: \_\_\_\_\_ Phone number/s: \_\_\_\_\_

Original qualifying certificate/s sighted by Committee Member & signed \_\_\_\_\_

**I hereby confirm that the above information is true and correct and that I have been a financial member of the Hills Dog Club Inc. now and when the above results were achieved.**

Signed: \_\_\_\_\_ Dated: \_\_\_\_\_

**This form must be returned by 31 October 2016.**

It may be handed in on the Training Ground at the counter,  
or given to Genevieve Young, or posted to:  
The Secretary, Hills Dog Club Inc., 56/159 Ridgescrop Drive, CASTLE HILL, NSW, 2154



## HILLS DOG CLUB Inc. AWARDS

Each year members of this Club are invited to enter our awards. The awards acknowledge excellence in Obedience and Rally Obedience Competition as well as Achievement in Combined Canine activity. In addition, Title Trophies are presented to any member's dog that has gained a Title in an approved dog discipline.

---

### EXPLANATION of AWARDS

The awards fall into 2 categories:

#### Category 1: OBEDIENCE & RALLY O

Category 1 Awards are competitive within the club, and are awarded by the club. These awards are based on **points gained** in competition at different levels, i.e., CCD, Novice (CD), Open (CDX), UD and UDX.

To be eligible for these awards you must:

1. Be a financial member of the Hills Dog Club Inc. at the time of participation in your nominated trials AND at the final closing date for submission of entries.
2. Have been an active member of the Hills Dog Club Inc. at the time of participation in your nominated trials for these awards.
3. Submit a complete, correct and legible entry form by the closing date, with photocopies of the original qualifying certificates attached OR the original qualifying certificates must be sighted by a Committee member and your entry form signed by the Committee member.

Any trial conducted within NSW or ACT is eligible for nomination.

Each of the Obedience Awards is based on the **combined total of the required number (which depends on the level of competition) of the participants' highest scores gained in the competition year stated.**

Gold, Silver and Bronze medals are awarded according to the number of points gained, with the highest scoring Handler and Dog in each **competition level** winning the Perpetual Trophy for the year.

Perpetual Trophies will be awarded to the highest scoring Handler & Dog in each level of competition. You do not need to apply for these, as they will be automatically granted. The Perpetual Trophies are:

|                                     |                                  |
|-------------------------------------|----------------------------------|
| CCD                                 | Abbey Memorial Trophy            |
| NOVICE                              | Hazel Baldwin Trophy             |
| OPEN                                | Hilda Smythe Trophy              |
| UD                                  | Barry Langdon Trophy             |
| UDX                                 | Hills Dog Club Inc. Trophy       |
| OPEN & UD                           | Karen Valeschini Memorial Trophy |
| RALLY O                             | Iris Bollinger Perpetual Trophy  |
| HIGHEST ACHIEVEMENT in CANINE COMP. | Dianne Atkins Perpetual Trophy   |

The closing date for entries will be 31<sup>st</sup> October 2016. LATE ENTRIES WILL NOT BE ACCEPTED. Awards will be presented at the December general meeting.

**ADDITIONAL ELIGIBILITY CRITERIA for the DIANNE ATKINS PERPETUAL TROPHY for HIGHEST ACHIEVEMENT IN CANINE COMPETITION:**

The following additional criteria must be met for this Perpetual Trophy to be presented to a Hills Dog Club Inc. member. If there is no member who meets the criteria, the trophy will not be awarded that year.

1. A club member must meet all other club requirements for trophies.
2. The competition year will run from the Tuesday after the State Titles 2015 (Tues 6.10.15) until the Monday of the State Titles 2016 (Mon 3.10.16) inclusive.
3. A nominee must achieve a minimum of 2 Titles with the same dog in the designated competition year.
4. As the purpose of this Trophy is to celebrate high achievement, the number and difficulty of titles will be taken into consideration.
5. In the event of multiple successful applications, the Chief Instructor and the President of the club will make the final decision. Their decision will be final. No correspondence will be entered into.
6. Members may nominate themselves and their dogs for this award, or another member may nominate them.
7. Nomination forms must be completed, signed and submitted by 31 October 2016.
8. Late entries will not be accepted.

Qualifying titles include:

|           |          |                   |  |
|-----------|----------|-------------------|--|
| Obedience | Tracking | Endurance         | <b>OR</b> any other title granted by the ANKC, or any other title deemed by the Club to be a fair title, e.g., Flyball or Canine Good Citizen. |
| Rally O   | Herding  | Conformation      |  |
| Agility   | Earthdog | Search & Track    |  |
| Flyball   | Gundog   | Dancing with Dogs |  |



## **AWARDS for OBEDIENCE**

**The competition year for CCD & NOVICE runs from the Tuesday after the 2014 State Titles (Tue 7.10.14) until the Monday of the 2016 State Titles (Mon 3.10.16) inclusive.**

**This is a 2-year period.**

### **CCD**

Your best THREE results only will be accepted and *must fall within a 12-month time zone of the above 2-year period.*

|                   |                        |
|-------------------|------------------------|
| 228 to 239 points | Receive a bronze medal |
| 240 to 251 points | Receive a silver medal |
| 252 to 300 points | Receive a gold medal   |

### **NOVICE**

Your best THREE results only will be accepted and *must fall within a 12-month time zone of the above 2-year period.*

|                   |                        |
|-------------------|------------------------|
| 528 to 539 points | Receive a bronze medal |
| 540 to 551 points | Receive a silver medal |
| 552 to 600 points | Receive a gold medal   |

**The competition year for OPEN, UD & UDX runs from the Tuesday after the 2015 State Titles (Tues 6.10.15) until the Monday of the 2016 State Titles (Mon 3.10.16) inclusive.**

### **OPEN**

Your best SEVEN results only will be accepted.

|                     |                        |
|---------------------|------------------------|
| 1246 to 1273 points | Receive a bronze medal |
| 1274 to 1301 points | Receive a silver medal |
| 1302 to 1400 points | Receive a gold medal   |

### **UD**

Your best THREE results only will be accepted.

|                   |                        |
|-------------------|------------------------|
| 534 to 544 points | Receive a bronze medal |
| 545 to 555 points | Receive a silver medal |
| 556 to 600 points | Receive a gold medal   |

### **UDX**

Your best THREE results only will be accepted.

|                   |                        |
|-------------------|------------------------|
| 534 to 544 points | Receive a bronze medal |
| 545 to 555 points | Receive a silver medal |
| 556 to 600 points | Receive a gold medal   |

### **OPEN & UD**

Your best THREE results from each Class will be accepted.

## **AWARDS for RALLY OBEDIENCE**

**The competition year for all Rally Obedience awards runs from the Tuesday after the State Titles 2014 (Tue 6.10.15) until the Monday of the State Titles 2015 (Mon 3.10.16) inclusive.**

Your best SIX results from any Class will be accepted and these can be a mix of classes.

|                   |                        |
|-------------------|------------------------|
| 456 to 479 points | Receive a bronze medal |
| 480 to 503 points | Receive a silver medal |

## Category 2: TITLE TROPHIES

Category 2 Awards are the club's way of recognising Titles achieved by members and their dogs. These awards are based on **having gained a Title** in a particular dog discipline, as recognised by the ANKC.

Because this is a Title award only, **the awards are not points based.**

To be eligible for these awards you must:

1. Be a financial member of the Hills Dog Club Inc. at the time of participation in your nominated trials AND at the final closing date for submission of entries.
2. Submit a complete, correct and legible entry form by the closing date with photocopies of the original qualifying certificates attached OR the original qualifying certificates must be sighted by a Committee member and your entry form signed by the Committee member.

The closing date for entries will be 31st December 2016.

LATE ENTRIES WILL NOT BE ACCEPTED.

The Trophies will be presented at the 2017 AGM.

### SUMMARY of AWARDS

| AWARD TYPE                                    | QUALIFYING PERIOD<br>& other criteria   | ENTRIES<br>CLOSE | DATE of<br>PRESENTATION             |
|---|---|------------------|-------------------------------------|
| C<br>A<br>T<br>E<br>G<br>O<br>R<br>Y<br><br>1 | <b>Obedience &amp; Rally O Achievements &amp; Perpetual Trophies</b><br><br><b>CCD &amp; Novice:</b> from the Tuesday after the 2014 State Titles (Tues 7.10.14) until the Monday of the 2016 State Titles (Mon 3.10.16) inclusive. <b>This is a 2-year time frame.</b> However, your BEST THREE RESULTS ONLY WILL BE ACCEPTED and the passes must fall within a <u>12-month</u> time zone of the above period. | 31 Oct 2016      | 14 Dec 2016                         |
|   | <b>Open, UD &amp; UDX:</b> from the Tuesday after the 2015 State Titles (Tues 6.10.15) until the Monday of the 2015 State Titles (Mon 3.10.16) inclusive.   |                  |                                     |
| C<br>A<br>T<br><br>2                          | <b>Title Trophies</b><br><br>Any member's dog that has gained a Title in 2016 is entitled to receive a Trophy. Multiple Titles will be engraved on a single trophy.   | 31 Dec 2016      | At the Hills Dog Club Inc. 2017 AGM |