

SanDisk®

Sansa® e200 MP3 Player



User's Manual

Technical Support
U.S.: 1-866-SANDISK (726-3475)
Worldwide for Tech Support numbers: www.sandisk.com/techsupport

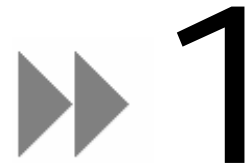
For more information on this product, please visit www.sandisk.com/sansa.

Part number: e200-7UM-ENG1

Table of Contents

SAFETY TIPS & CLEANING INSTRUCTIONS	1
IMPORTANT – SAFETY HEARING LEVEL INFO	2
SANSA® E200 OVERVIEW	4
INTRODUCTION	4
FEATURES	5
MINIMUM SYSTEM REQUIREMENT	5
PACKAGE CONTENTS	5
SANSA® E200 AT A GLANCE	6
HOLD SWITCH.....	7
MAIN MENU OPTIONS	7
PLAYBACK SCREEN.....	8
BATTERY	8
BASIC USAGE	10
POWER BUTTON	10
<i>Power On</i>	10
<i>Power Off</i>	10
<i>Reset</i>	10
THUMBWHEEL	10
NAVIGATION BUTTONS.....	11
SUBMENU BUTTON.....	11
CONNECTING TO YOUR COMPUTER.....	11
UPDATING THE FIRMWARE	12
LOADING CONTENT	13
LOADING MUSIC	13
<i>Drag and Drop</i>	13
<i>Windows Media Player</i>	13
LOADING PHOTOS AND VIDEO.....	19
PLAYING CONTENT	21
PLAYING MUSIC	21
WATCHING VIDEOS	24
VIEWING PHOTOS.....	24
FM RADIO (IF APPLICABLE)	28
LISTENING TO FM RADIO	28
PROGRAMMING FM PRESETS	28
RECORDING	30
VOICE RECORDING	30
DELETING CONTENT	31
DELETING PHOTOS	31
DELETING VIDEOS	31
SETTINGS	33
MUSIC OPTIONS	33

RADIO OPTIONS.....	33
SLIDESHOW OPTIONS	33
BACKLIGHT	34
LANGUAGE	34
DATE & TIME.....	34
BRIGHTNESS.....	34
VOLUME	34
RESET ALL	35
INFO	35
AUTO SHUT-OFF	35
FORMAT.....	35
RECORD BUTTON	35
TIPS & TROUBLESHOOTING	36
LEARN MORE, SERVICE, AND WARRANTY INFORMATION.....	38
GETTING TECHNICAL SUPPORT	38
SANDISK LIMITED WARRANTY	38
END USER LICENSE AGREEMENT.....	39
FCC REGULATION	42



This chapter provides you the safety tips and cleaning instructions for your SanDisk Sansa® e200 player.

Safety Tips & Cleaning Instructions

Read the safety instructions carefully before using your Sansa player.

1. Read this entire manual to ensure proper usage.
2. Keep this User's Manual for future reference.
3. Do not use Headphones/Earphones while driving, cycling, or operating any motorized vehicle. This may create a traffic hazard and may be illegal in some areas. It can also be dangerous to play your music with Headphones/Earphones at high volume while walking, or engaged in other activities. You should exercise extreme caution and discontinue use in potentially hazardous situations.
4. Avoid using Headphones/Earphones at high volume. Hearing experts advise against continuous loud and extended music play. Keep the volume at a moderate level, so that you are better able to hear outside sound, and to be considerate of the people around you.
5. Keep your player away from sinks, drinks, bathtubs, showers, rain, and other sources of moisture. Moisture can cause electric shocks with any electronic device.
6. Follow these tips to keep your player working well for a long time:
 - Clean your player with a soft lint-free cloth used on glass lenses.
 - Do not allow young children to use your player unsupervised.
 - Never force any connector into the ports of your player or your computer. Make sure your connectors are the identical shape and size before you connect.
7. Do not disassemble, crush, short-circuit or incinerate battery as it May cause fire, injury, burns or other hazards.

Important – Safety Hearing Level Info

YOU MUST READ THIS BEFORE USING YOUR SANSA MP3 PLAYER

Congratulations on the purchase of your Sansa® media player!

Your media player is equipped with a variety of features. To help you maximize your listening pleasure, SanDisk would like to advise you that it is important to use your headphones with your media player at a safe hearing level.

Exposure or repeated exposure for an extended period of time to music and other sounds that are too loud can cause damage to your hearing resulting in temporary or even permanent “noise induced hearing loss”.

Symptoms of hearing loss increase gradually with prolonged exposure at high levels of loudness. Initially, you may not even be aware of the loss unless detected with a hearing test.

HEARING LEVELS

To help you understand what may be considered a safe hearing level, the following examples are included for your reference.

Examples of Typical Approximate Sound level:

- Sound Levels in Decibels (dB)*
- Refrigerator humming 40
- Normal conversation 60
- City traffic 80
- Motorcycles and lawnmowers 90#
- Rock concerts 110-120#
- Firearms 120-140#

* A decibel (dB) is a unit of relative measurement of the strength of sound wave. In decibels (dB), a measured signal level doubles with every additional 3 dB.

These sound decibel levels are considered harmful under extended exposure.

Information courtesy of the National Institute of Deafness & Other Communication Disorders (NIDCD) <http://www.nidcd.nih.gov/health/hearing/noise.asp>

FOR YOUR SAFETY!

Your hearing may adapt to higher volumes of sound. In order to prevent any harmful impact to your hearing, you must control the sound emanating from your

headphones and set the media player volume to a low setting where you can hear it clearly and comfortably.

Studies, including one from NIDCD indicate that sounds of less than 80 decibels, even after long exposure, are unlikely to cause a hearing loss. Listen to your media player at such a level that you can still hear conversation and other people in your environment without shouting when you attempt to converse.

It can also be dangerous to play your music with headphones/earphones at high volume while walking, or engaged in other activities. You should exercise extreme caution and discontinue use in potentially hazardous situations.

Do not use headphones/earphones while driving, cycling, or operating any motorized vehicle. This may create a traffic hazard and may be illegal in some areas.

Disposal Instructions

Do not dispose of this device with unsorted waste. Improper disposal may be harmful to the environment and human health. Please refer to your local waste authority for information on return and collection systems in your area.

NOTE: For Home and Personal Use

This product is intended to be used for recording and playback for your home and personal enjoyment. Copying and commercial use of copyrighted material without permission of the copyright owner may be prohibited by law. Use of your media player, in compliance with all copyright and applicable intellectual property laws, remains the responsibility of the user of the product.



This chapter helps you familiarize yourself with the features and functionality of your Sansa® e200 player. The battery instructions are also provided.

Sansa® e200 Overview

Congratulations on your purchase of a SanDisk Sansa® e200 MP3 player!

Introduction

The **Sansa e200** is a high performance portable digital audio/video player with a large 1.8" TFT color screen, Digital FM tuner, voice recorder, microSD™ card expansion slot, and a replaceable and rechargeable Lithium Ion battery.

The **Sansa e200** enables users to play MP3, WAV, WMA, secure WMA, and audible files. It also plays video and displays photos that are transferred to the player through the Sansa Media Converter (available for download at www.sandisk.com/support/sansa) and has a voice recorder function.

The **Sansa e200** provides superior sound playback and supports Microsoft PlaysForSure subscription music. The SanDisk Media Converter supports most image formats allowing you to enjoy photos and personal videos.

The **Sansa e200** is available in the following capacity points: 2GB (e250), 4GB (e260), and 8GB (e280)

		2GB	4GB	8GB
MP3	Hours of Music Content	32	64	128
	Number of Songs	500	1000	2000

NOTE: Approximation based on 4 minute songs at 128 kbps MP3 (3,932,160 bytes per song)

1 megabyte (MB) = 1 million bytes; 1 gigabyte (GB) = 1 billion bytes. Some of the listed capacity is used for formatting and other functions, and thus is not available for data storage

Features

- **Digital Audio Player** – supports MP3, WAV, WMA, secure WMA, and Audiobook files. Other file types need to be converted to these formats.
- **Video Player** – supports video files converted and transferred to the device through the Sansa Media Converter software.
- **Photo Browser** – supports photo files converted and transferred to the device through the Sansa Media Converter software.
- **FM Radio** (if applicable) – includes an integrated FM radio for listening to live-broadcast FM radio stations.
- **Voice Recorder** – supports voice recording function with built-in microphone.
- **EQ effect** – you are able to select an EQ mode to personalize your music experience.
- **microSD™ Slot** – supports read or write of music files from external microSD and microSDHC cards.
- **Internal Memory** – allows users to store data on the internal memory.

Minimum System Requirement

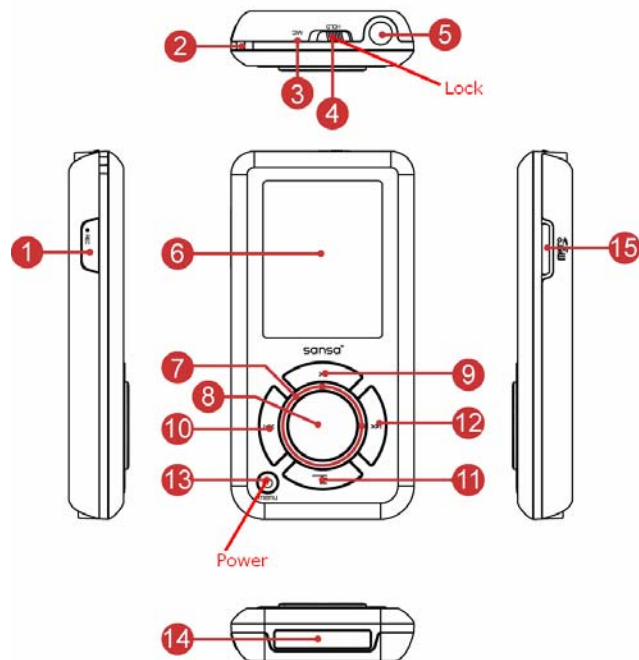
- Windows XP SP2
- Windows Media Player v10+
- Intel Pentium class PC or higher
- CD-ROM drive
- USB 2.0 port for hi-speed transfers

Package Contents

Please unpack your **Sansa® e200** and check that the following were included:

- Earphones
- USB 2.0 Travel Cable
- Installation CD
- Loud Music Warning Insert
- Quick Start Guide
- Travel Pouch
- Lanyard

Sansa[®] e200 at a Glance



1	REC	Voice record button
2	Strap Eyelet	Lanyard connection
3	MIC	Internal microphone
4	Hold/ Lock	Factory set to locked position (shows Orange Color). Slide to unlock controls. When locked all controls are disabled. Lock to prevent accidental activation of controls
5	Earphone Port	Connect earphones here to listen to player
6	Display Window	Read status and information here
7	Thumbwheel	Rotate to select menu item or adjust volume
8	Select Button	Press to select the item
9	Up/Pause/Resume	Press to move up one item, pause, or resume
10	Left/Previous/Rewind	Press for previous track, rewind, or move left
11	Down/Submenu	Press to move down or to options menu
12	Right/Forward	Press for next track, fast forward, or move right
13	Power/Menu/ Reset	Press to power on/off, enter menu, or hold 15 seconds to reset your Sansa. When the player is locked using the HOLD switch, described above, the player will not power on or off. All controls will be disabled

14 Dock Connector Port Plug the Dock Connector Cable here

15 microSD Card Slot Insert microSD, or gruvi™ content cards

Hold Switch

The **Hold** Switch is located on the top of the device, and is used to prevent any accidental operation. All function keys will be disabled once the Hold Switch is moved to the lock position (Orange Color visible). All the buttons on the Sansa e200 will not operate when the **Hold** Switch is active (Orange Color visible).

The following message will appear on the display screen if any buttons is pressed while the device is in the Locked position. The music should continue to play even if the device is locked.



Main Menu Options



Voice – record voice using built-in microphone



Video – watch loaded videos



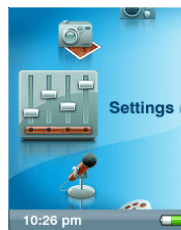
Music – browse and listen to music loaded in the internal library or microSD card



FM Radio (if applicable) – listen to FM radio and save presets



Photo – view loaded photos



Settings – view or customize the Sansa player features

Playback Screen



1	Track Number	Displays the current track number and the total number of tracks
2	Artist Name	Displays the artist name
3	Song	Displays the name of the song
4	Track Timer	Display the timer of the current track
5	Repeat	Indicates that the repeat function is enabled
6	Album Name	Displays the album name
7	Play/Pause	Displays the music or recording files playback status
8	Track Length	Displays the remaining timer of the current track
9	Battery	Displays the battery status

Battery

The Sansa e200 player comes with a replaceable and rechargeable lithium ion battery. To use the player for the very first time, remember to fully charge the Li-ion battery. You can charge your Sansa through the USB port of your computer, a car adapter (not included) USB port, or AC adapter (not included) USB port.

Level Indicator



Charging

To charge the battery, please follow these steps:

1. Connect the smaller end of the USB cable into an available USB port on the computer.
2. Connect the larger end of the USB cable into the dock connector of the player.
3. The computer must be on for most USB ports to charge your battery. Your Sansa will show connected and the yellow charging indicator will

appear. The battery level indicator will blink while charging. You will not be able to play while connected to the computer USB.



4. To stop recharging, simply disconnect the cable.

The battery can also be charged using an AC adapter (not included) or a car adapter (not included) and you will be able to play your device while charging with one of the adapters. The battery will reach approximately 70% charge in 2.5 hours and full charge in about 3.5 hours.

NOTE: Some low-power USB ports may not be able to provide enough charge power. Also note that rechargeable batteries may eventually need to be replaced as they have limited charge cycles (which vary with use and settings).

Replacing

The Li-ion rechargeable battery is replaceable. To purchase a replacement battery, visit your local retailer or www.sandisk.com. Follow the instructions provided with the replacement battery.

⚠ CAUTION: *Do not disassemble, crush, short-circuit or incinerate your battery as it may cause fire, injury, burns or other hazards*

This chapter provides you the basic usage instructions for your Sansa® e200 player.

Basic Usage

Power Button

The power button is used to power on or off, putting the Sansa® e200 player in standby mode as well as resetting it. For initial power-up you must unlock the controls by moving the **HOLD** switch to the un-locked position (No Orange Color visible).

Power On

Press the **Power Button** once to turn on the Sansa e200 device. The Thumbwheel will light up and the Main Menu will appear after it has been booted up.

Power Off

To power down the Sansa e200 player, press and hold the **Power Button** for approximately 2 seconds or until **Goodbye** is displayed.

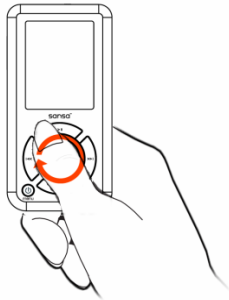
NOTE: To prevent accidental power on, move the **HOLD** switch to the locked position.

Reset

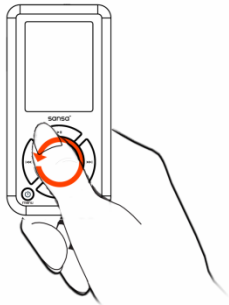
If the Sansa e200 player freezes up, press the **Power Button** for approximately 15 seconds. This is like a power down of the device. Once you perform the reset, the adjustments you made during the last operation will be gone.

Thumbwheel

Turn the wheel **clockwise** to scroll down through menu items rapidly or to increase the volume during playback.




Turn the wheel counterclockwise to scroll up through menu items rapidly or decrease the volume during playback.



Navigation Buttons

Use Navigation Buttons, described in **Sansa[®] e200 at a Glance**, to navigate through menus, play music, play video, browse photos and arrange files.

Submenu Button

When submenu is available, the submenu icon will display on the left bottom of the display screen. Press the Submenu  button to enter submenu.

Connecting to your Computer

To connect the Sansa player to your computer, follow these instructions:

1. Connect the smaller end of the USB cable into an available USB port on the computer.
2. Connect the larger end of the USB cable into the dock connector of the player.
3. The Sansa player will show connected on its display screen.



4. The Sansa player will appear in **My Computer** as **Sansa[®] e200** Portable Media Player.



To remove the Sansa player from the computer, simply disconnect the USB cable from the player after you have finished charging, transferring, firmware upgrading, or synchronizing files.

WARNING: Do not disconnect the player while it's transferring data. Disconnecting the player from the computer while the data is being transferred can damage the device.

Updating the Firmware

SanDisk occasionally releases firmware updates, which includes bug fixes and performance enhancements. To make sure your Sansa e200 series player has the latest firmware, please visit the download area at www.sandisk.com.

▶▶ 4

This chapter shows you how to transfer music, photos, and video content from your computer to your Sansa[®] e200 player.

Loading Content

Loading Music

You can transfer music from your computer to the Sansa player using the drag-and-drop method or using music managing software like Windows Media Player.

Drag and Drop

Follow these steps to drag-and-drop music to your Sansa e200 player:

1. Connect your Sansa e200 player to your computer.
2. Select **Open device to view files using Windows Explorer** on initial connection.
3. Double-click on **Sansa** device.
4. Double-click on the **MUSIC** folder.
5. Drag and drop music files from your computer to **My Computer\Sansa e200\...\MUSIC**.

Windows Media Player

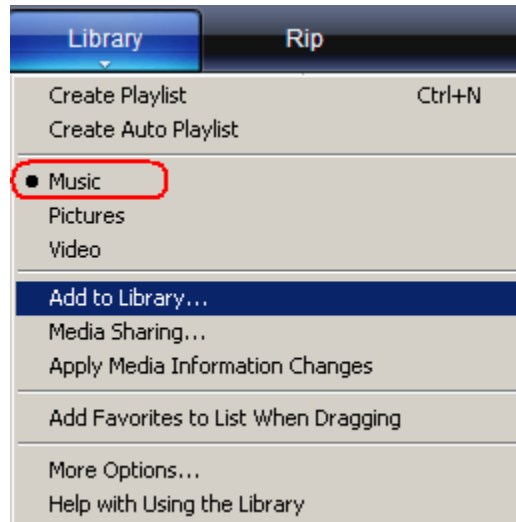
Before you can create playlist and transfer (or synchronize) them to your Sansa player, you need to show Windows Media Player where your songs are located.

Adding Music Files to Library...

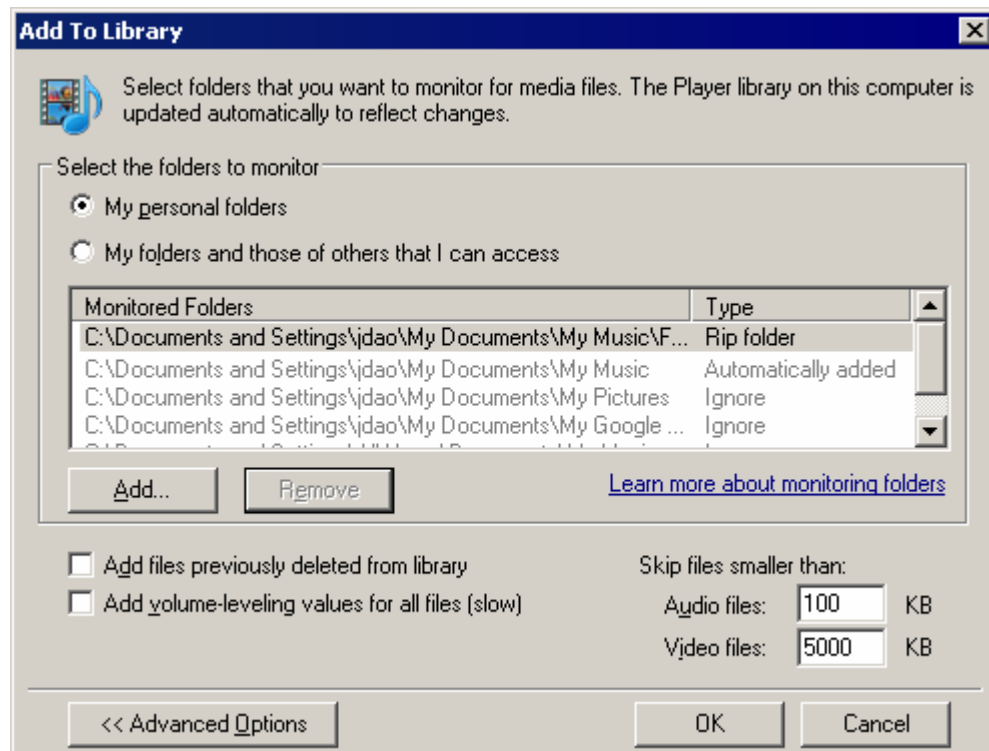
1. To add music files to WMP 11's library, please follow these steps:
2. Click the arrow below the **Library** tab.



3. Make sure Music is selected then click **Add to Library...**



4. In the **Add to Library** dialog box, click one of the following options then click **OK**.



- **My personal folders:**
Use this option to monitor the digital media files stored in your personal Music, Pictures, and Videos folders, as well as any files stored in the public Music, Pictures, and Video folders that everyone who uses your computer has access to.
- **My folders and those of others that I can access:**
Use this option to monitor the digital media files stored in your personal Music, Pictures, and Videos folders, the files stored in the public Music, Pictures, and Video folders, as well as the files stored

in the personal Music, Pictures, and Videos folders that belong to other users on your computer.

Creating Playlist

To create playlist for Windows Media Player, please follow these steps:

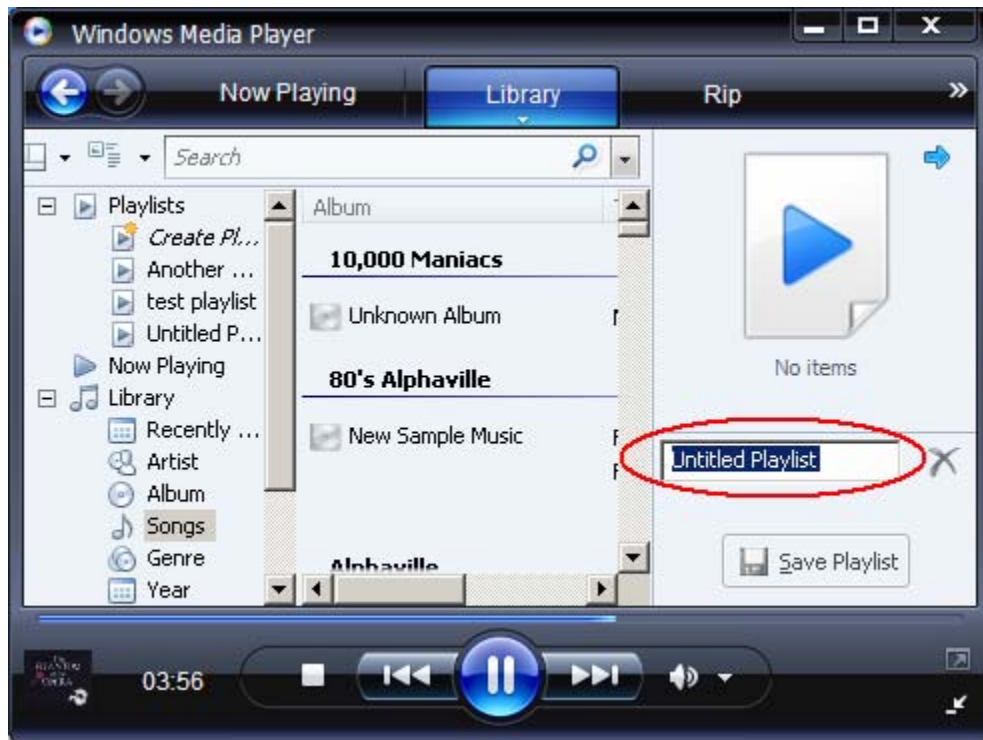
1. Launch Windows Media Player.
2. Clear the List pane by clicking the **Clear List pane button**.



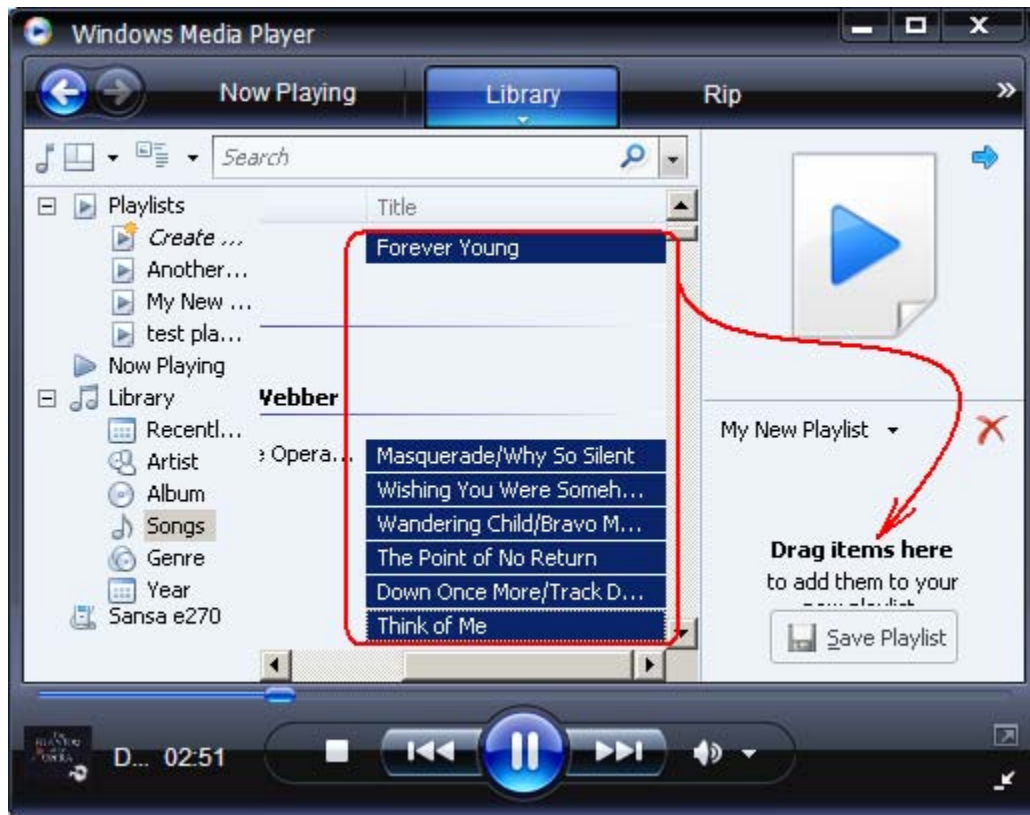
3. Click the arrow below the **Library Tab** and select **Create Playlist**.



4. Type in the name of your Playlist



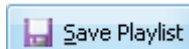
5. Drag the songs from **Details pane** to the **List Pane** to add them to the new playlist.



6. To re-arrange the songs, drag them up or down in the **List** pane.



7. Click Save Playlist.



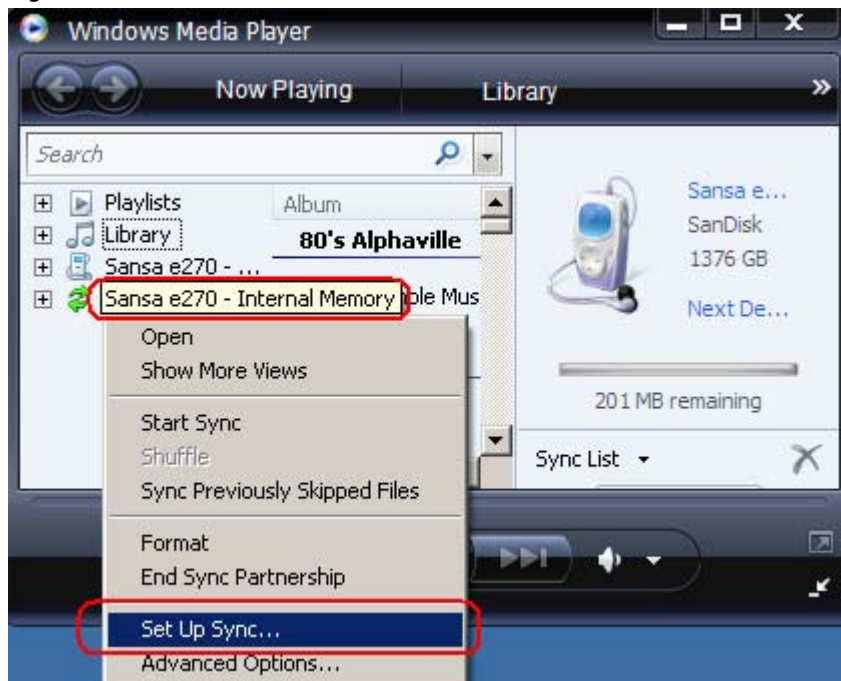
Transferring Playlist

To transfer playlist to your Sansa player, follow these steps:

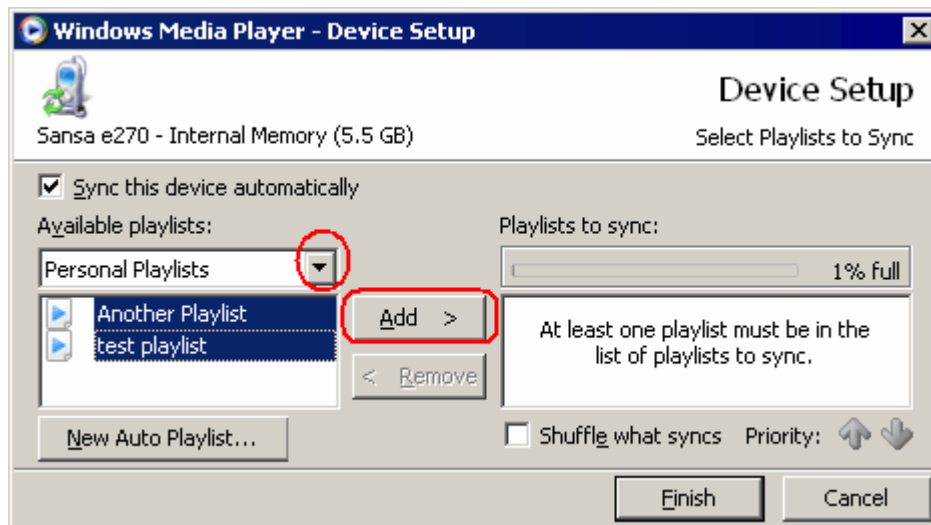
1. Connect your Sansa player to the computer.
2. Select **Sync digital media files to this devices using Windows Media Player** on initial connection.



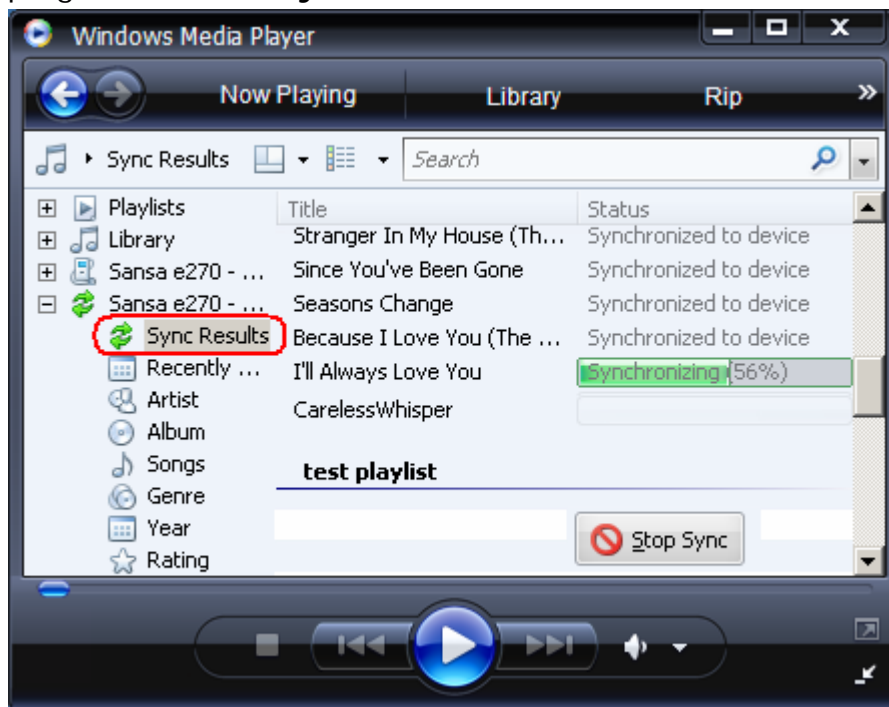
3. Right-click on **Sansa e200 Internal Memory** and select **Set Up Sync...**



4. Select **Personal Playlists** from the dropdown menu on the left pane.
5. Highlight the playlists under **Personal Playlists** you want transfer to the Sansa player, click **Add** then **Finish**.



6. Synchronization will start as soon as you click Finish. To see the Sync progress, click on **Sync Results**.



Loading Photos and Video

You can use the Sansa Media Converter to transfer photos and videos to your Sansa player (available for download at www.sandisk.com/support/sansa).



The Sansa Media Converter supports the following import media types:

- Still Image Files: JPEG, TIFF, PNG, BMP, and GIF.
- Video Files: AVI, MPEG-1 & MPEG-2 in MPEG, MPG, MPE or VOB (unprotected) formats. MPEG-4 in AVI format, DAT, ASF, QuickTime MOV, and WMV.

NOTE: QuickTime 6.5 or higher and Windows Media Player 9 or 10.0 are required for QuickTime MOV file. Error message will appear if not installed.

Sansa Media Converter software lets you convert photos and videos as appropriate, and then transfer them to your Sansa player. Sansa Media Converter offers features such as cropping, rotating, and resizing before transferring them to your player as well as the ability to transfer photo and video files to your microSD card. Refer to the Sansa Media Converter software for file formats supported.

To transfer photos and videos to your Sansa player, follow these steps:

1. Connect the Sansa player to your computer.
2. Select **Converter using Sansa Media Converter** on initial connection.
3. Click **Add Media**  to select photo or video files to be converted.
4. The Sansa Media Converter will store all converted files in **My Album**. Click the Album Name box and type in the name you want.
5. Click  to start the conversion process. A status box will appear showing which file(s) are being converted.

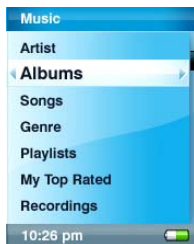
This chapter shows you how to play music, watch videos and view photos on your Sansa® e200 player.

Playing Content

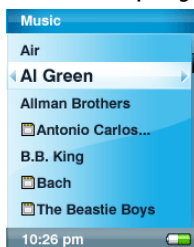
Playing Music

Follow these steps to play music, audio books, and voice recordings:

1. Select **Music** from the Main Menu.
2. Select **Artists, Albums, Songs, Genres, Playlists, Recordings (Voice), My Top Rated, and Music Options.**

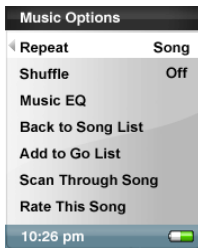


3. Highlight and select the desired track or file to play. You can browse other areas of your player (music lists, settings, and photos), while your music is playing.



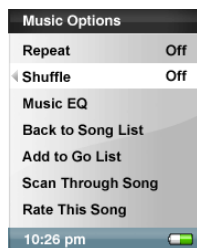
4. The following options are available during playback.

Repeat



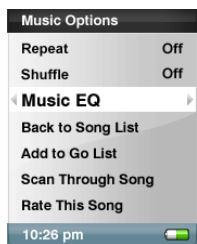
1. In playback mode, press the submenu button.
2. Highlight and Select **Repeat**.
3. Select one of the following:
 - **Off:** No repeat of tracks
 - **Song:** Repeat the current track
 - **All:** Repeat all selected tracks

Shuffle



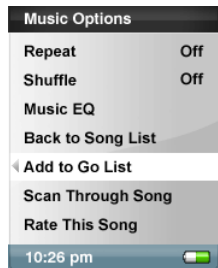
1. In playback mode, press submenu.
2. Select the **Shuffle** item. To play songs in random order, set Shuffle to **On**.

Music EQ



1. In playback mode, press submenu.
2. Scroll and Select the **Music EQ** item.
3. Scroll and Select a **Music EQ** mode.

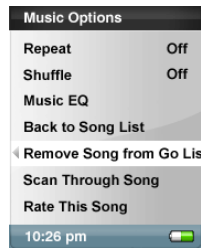
Add Songs to Go List



1. Play a song.
2. In playback mode, press submenu.
3. Select the **Add Song to Go List**.
4. You can also **Add to the Go List** by pressing and holding the **Select** button.
5. Select **yes** to confirm.

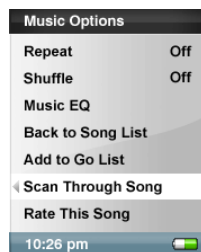
Remove Songs from Go List

1. Select **GoList** from Playlists and play a song.
2. In playback mode, press submenu.
3. Select the **Remove Song from Go List**.



Scan through Song

1. In playback mode, enter submenu.
2. Select the **Scan Through Song** item.



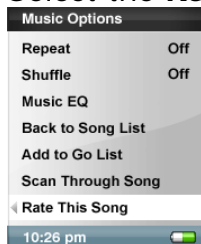
3. Use the **Thumbwheel** to scan through the song. **3 seconds of inactivity exits Scan mode.**

Delete Song

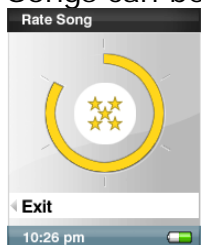
1. In playback mode, press submenu.
2. Select the **Delete Song** item.

Rate This Song

3. In playback mode, press submenu.
4. Select the **Rate This Song** item.



5. Use the **Thumbwheel** to rate the song (1 to 5 stars) then press |<< button to return to **Music Options** menu. My Top Rated Songs can be viewed in MUSIC menu.



Watching Videos

Your Sansa e200 player will only play videos that are loaded through the Sansa Media Converter.

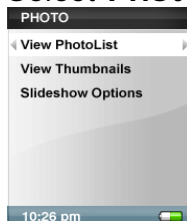
1. To play video select **Video** from the **Main Menu**.
2. Select a **Video** to play.
3. Press **Select** to pause or resume the video.
4. Press and hold the |<< or >>| buttons to advance or rewind.
5. Press submenu to move to **Video** list.

Viewing Photos

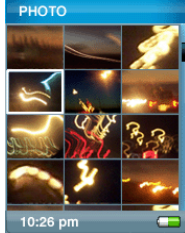
Your Sansa will only display photos in portrait orientation. You can crop your pictures with a photo editing software package prior to converting if you wish to display in full screen. The Sansa Media Converter converts the photos then transfer them to the player's internal memory.

To view photos, follow these steps:

1. To view photos, select **Photo** from the **Main Menu**.
2. Select **PhotoList** or **Thumbnails**.



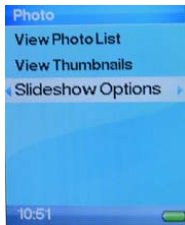
3. If you selected Thumbnails you will see the browser screen. Scroll through the photos and select the one of interest.



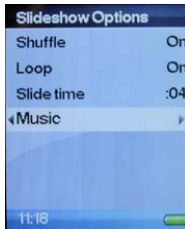
4. Use |<< or >>| buttons to backup or advance to another photo.

To view slideshow, follow these steps:

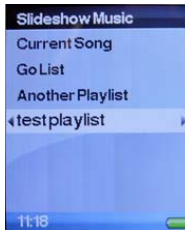
1. Select **Photo** from the **Main Menu**.
2. Select **Slideshow Options**.



3. Select **Music**.



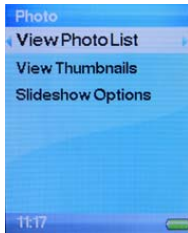
4. Select an available Playlist.



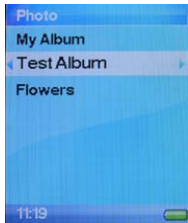
5. Scroll down to set other preferences: Shuffle/Loop/Slide Time.



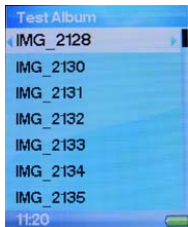
6. Press the **Back** (|<<) button to return to Photo Menu.
7. Scroll to **View Photo List**.



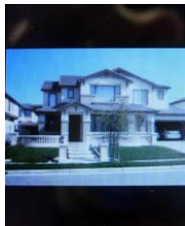
8. Select a desired album.



9. Press select to view a photo.



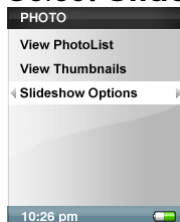
10. Press and hold **Select** for about 1 second until the music starts playing.



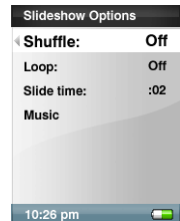
11. Press **Select** again to **Pause** the slideshow.

Slideshow Options

1. Select **Slideshow Options** in **PHOTO** menu.



2. Personalize your **Slideshow Options**.



- Select the **Shuffle:** **On** for Random order.
- Select **Loop:** **On** to set non-stop slideshow.

- Select the **Slide Time** for each photo view.
 - Select the **Music** for background music and select **CurrentSong** or **GoList** in the Music Submenu.
3. Press |<< to move to **Photo** menu.
 4. Select **View Photo List**.
 5. Select the folder you desire for the Slideshow.
 6. Press select button when the list of photos is displayed.
 7. Press Select to start and pause the show.
 8. Use the **Thumbwheel** to control volume.
 9. Press submenu to return to **View Photo List**.

This chapter provides you instructions on how to listen to FM broadcast radio and to program the preset stations on Sansa[®] e200 player.

FM Radio (if applicable)

The Sansa player includes an integrated FM radio for listening to live broadcast FM stations. Please note that the FM may not be available in your region.

Listening to FM Radio

To listen to live broadcast FM station, follow these steps:

1. Select FM Radio from the Main Menu.
2. A radio frequency menu will appear:



- Press |<< or >>| to adjust and search for the desired frequency, or select preset by pressing **Select**.
- For fast search, press and hold the |<< or >>| buttons. You can browse other areas of the player, like Settings and Photos, while listening to the Radio.

Programming FM Presets

When the Radio Mode is selected for the very first time, the Sansa player will run an auto station searching and store the searched stations as the preset favorite stations. You can program up to 20 preset stations.

To program the preset stations on your Sansa player, follow these steps:

1. Press the submenu button in Radio mode.



2. Select **Add Preset** to save current frequency into presets.
3. Select **Delete Preset** to remove current frequency from presets.
4. Select **Delete All Preset** to clear all presets, and next time when you enter Radio Mode, Sansa player will search automatically.
5. Select **Auto-Scan for Presets** to allow Sansa player to automatically scan and store all available FM radio stations to preset.

NOTE: This action will erase all stored preset stations.

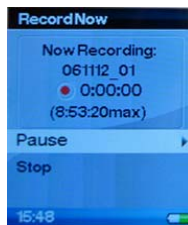
This chapter shows you how to use your Sansa® e200 player's built-in microphone.

Recording

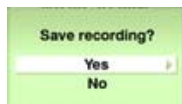
Voice Recording

You can record your own voice, an interview, or a speech with the Sansa e200 player's built-in internal microphone.

1. Press the **Menu** button to return to Main Menu.
2. Press the **Record** button to start recording.



3. To pause recording, select **Pause** in Record mode.
4. On the Display, a recording file should be generated and placed under the folder of [/**RECORD/VOICE/**].
5. To stop recording, select **Stop** in record mode, and then a pop-up window will appear on the screen. Select **Yes** to save recording. The recording will be saved in the **RECORD** folder. The file list will appear.



6. Press |<< button to return to the Voice Menu.



This chapter shows you how to delete content from Sansa® e200 player.

Deleting Content

Deleting Photos

The photos are stored in 2 locations on your Sansa...My Album and Thumbnails. The instructions below for deleting photos and video from your player were created using Windows XP with Windows Media Player 11.

1. Connect your Sansa e200 to your computer.
2. Select **Open device to view files using Windows Explorer** on initial connection.
3. Click the drive containing your photos.



4. Click on the **photo** folder.
5. Highlight and delete the photos stored in **My Computer\Sansa e200\selected drive\Photo\My Album** and **My Computer\Sansa e200\selected drive\Photo\thumbnail\My Album**.

Deleting Videos

To **delete videos** from your Sansa, follow these steps:

1. Connect your Sansa e200 to your computer.
2. Select **Open device to view files using Windows Explorer** on initial connection.
3. Click on the drive containing your videos.
4. Click on the **video** folder.
5. Delete the videos stored in **My Computer\Sansa e200\selected drive\video**. (*The player database will refresh after deleting files when you disconnect from your computer.*)

Deleting Music Files

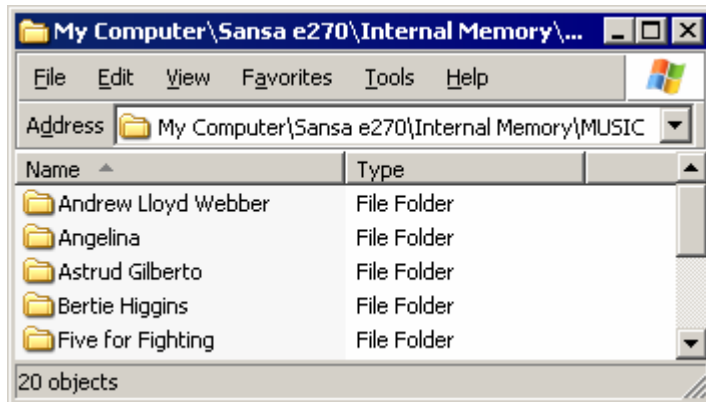
You can delete files directly from the Sansa player or using the computer. To delete music directly from the player, refer to [Delete Song](#) on page 24.

To delete music files using the computer, follow these steps:

1. Connect your Sansa to the computer.
2. Select **Open device to view files using Windows Explorer** on initial connection.
3. Select the place where you want to delete music files from.



4. Highlight and delete the music files or folder from **My Computer\Sansa e270\Internal Memory\MUSIC** folder.

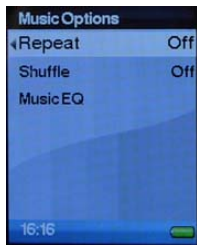


This chapter shows you how to customize your Sansa® e200 player's settings.

Settings

You can personalize your Sansa e200 player's settings by scrolling down to **Settings** and setting it from the **Main Menu**.

Music Options



Repeat:

- Off – Turn off repeat mode
- Song – Repeat current song
- All – Repeat all songs

Shuffle:

- Off – Play songs sequentially
- On – Play songs in random order

MusicEQ:

The Sansa e200 player provides various EQ modes: Rock, Pop, Jazz, Classical, Funk, Hip-Hop, Dance, Full Bass, Full Treble, and Custom.

Radio Options

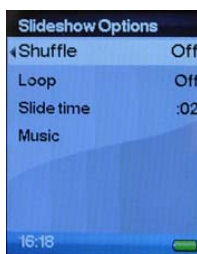


Delete All Presets: To delete all the presets Radio channels

FM Region: USA or World

FM Mode: Stereo or Mono

Slideshow Options



Shuffle:

- Off – View photos in order
- On – View photos in random order

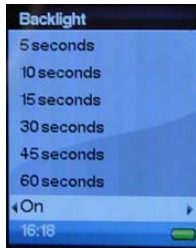
Loop:

- Off – View all photos once
- On – View all photos continuously

Slide Time – set the duration of each slide

Music – Play music in the background while watching slideshow.

Backlight



The Backlight timer setting can be adjusted to stay on for 5 seconds, 10 seconds, 15 seconds, 30 seconds, 45 seconds, or 60 seconds. It can also be set to always stay ON.

Language



Language selection

Date & Time



Date: Month, Date, and Year

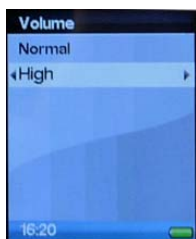
Time: Hour and Minute and 12 or 24 hours

Brightness



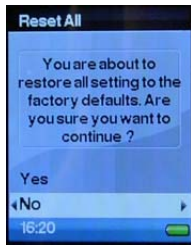
Use the **Thumbwheel** to adjust the brightness setting, and then press **Select** to confirm and exit.

Volume



To option will set the sound output on the Sansa e200 player's Earphone port to Normal or High.

Reset All



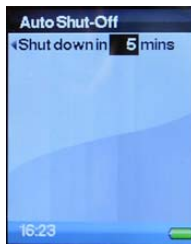
This option will reset all the Sansa e200 player's settings back to factory defaults.

Info



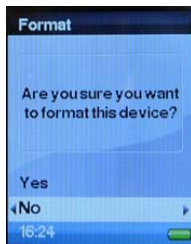
This displays the Sansa e200 player's firmware version, total and available memory on the player itself as well as the microSD card (if inserted), and total number of songs/voice recordings.

Auto Shut-off



This option will put the Sansa player in standby after the specified time in minutes had expired.

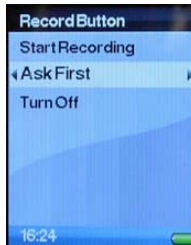
Format




This option allows users to format the Sansa player's internal memory without connecting to a computer.

Warning: This option will erase all the data stored in the device!!!

Record Button



This option allows user to define how the **Record**  **Button** on the Sansa e200 player will behave once it is pressed.

- a) **Starting Recording** Starting recording right away once the **REC** button is pressed.
- b) **Ask First** Ask before starting to record when the **REC** button is pressed.
- c) **Turn Off** Disables the **REC** button

▶▶ 10

This chapter helps you get the most from your SanDisk Sansa® e200 player with tips and troubleshooting.

Tips & Troubleshooting

How do I reset my Sansa player?

Press and hold the Power/Menu button down for approximately 15 seconds.

Why won't my album art display?

For correct Album Work functionality, the album art and associated music file may need to be located in the same folder. See preloaded content as an example.

What is MTP?

Media Transfer Protocol (MTP) is a new protocol and accompanying set of drivers developed by Microsoft to connect portable devices to a Windows XP PC and synchronize digital media content between those devices and the PC

What music file formats does the Sansa e200 support?

The Sansa MP3 Player will support MP3, WAV, WMA, secure WMA, and Audible.

Some of my music files are on my player, but cannot be played. When I select them, another song begins to play.

What is wrong?

You may not have purchased the rights to play the song on an additional device. To test this, try to play a song that you have copied from an older CD and converted to MP3 format. If you can play that song, but not the song that will not play, then you need to purchase the rights to play the song.

Why doesn't my photos display in full screen?

Try cropping your pictures to 128x64 with a photo editing software package prior to converting if you wish to display in full screen.

Why should I update the firmware?

You should always update the player to the latest firmware to ensure that it functions correctly and has all the latest features.

How can I use non-supported file types with my MP3 player?

First you must convert the songs to a supported format. Then you can transfer the songs to the player.

Is the player compatible with podcast?

As long as the podcast are in MP3 format and an appropriate bit rate (32-320 kbps), then the player should be capable of playing the files.

Why does my player say unknown artist/album?

Normally this is because the ID3 tags are missing information. On the computer, right-click the song and choose Properties, then the Summary tab and click Advanced. Then you can input the data such as Artist, Album, Song Title, Track Number, Genre, and Year.



This chapter provides information to help you get service and support for your Sansa® e200 player.

Learn More, Service, and Warranty Information

Getting Technical Support

Before you contact Technical Support, we encourage you to read the **Tips & Troubleshooting** section on **page 16** to see if your question is covered there.

If you have questions about the use or features of your player, please call the SanDisk Technical Support Center at 1-866-SanDisk (1-866-726-3475), or fill out an on-line support request at <http://www.sandisk.com/techsupport>.

When you call or contact us for support, please include as much information as you can from your packaging material. This will allow us to help you more quickly.

Learn More

You can also visit us on the web at <http://www.sandisk.com> to learn more about your player as well as other SanDisk products.

SanDisk Limited Warranty

SanDisk warrants that this product will be free from material defects in design and manufacture and will substantially conform to the published specifications under normal use for one year from your date of purchase, subject to the conditions below. This warranty is provided to the original end user purchasing from SanDisk or an authorized reseller, and is not transferable. Proof of purchase may be required. SanDisk is not responsible for any failure or defect caused by any third party product or component, whether authorized or not. This warranty does not

apply to any third party software provided with the product and you are responsible for all service and repair needed for such software. This warranty is void if the product is not used in accordance with the product instructions, or if it is damaged as a result of improper installation, misuse, unauthorized repair, modification or accident.

To obtain warranty service contact SanDisk at 1-866-SanDisk or send an email to: support@SanDisk.com. You must return the product in tamper resistant packaging, freight prepaid, as instructed by SanDisk. You must obtain a tracking confirmation number, which you may be required to provide to SanDisk. SanDisk will, at its option, repair or replace the product with new or refurbished product of equal or greater capacity and functionality, or refund the purchase price. The warranty duration on replaced product will be that time period remaining on the original product. THIS CONSTITUTES SANDISK'S ENTIRE LIABILITY AND YOUR EXCLUSIVE REMEDY FOR BREACH OF THIS WARRANTY.

SanDisk does not warrant, and shall not be responsible for, any lost data or information contained in any product (including in any returned product), regardless of the cause of the loss. SanDisk's products are not warranted to operate without failure. SanDisk products should not be used in life support systems or other applications where failure could threaten injury or life. This warranty gives you specific legal rights, and you may also have other rights which vary by jurisdiction.

THE FOREGOING IS SANDISK'S SOLE WARRANTY. SANDISK DISCLAIMS ALL OTHER EXPRESS AND IMPLIED WARRANTIES TO THE FULLEST EXTENT PERMITTED BY APPLICABLE LAW. THE IMPLIED WARRANTIES OF MERCHANTABILITY AND FITNESS FOR A PARTICULAR PURPOSE ARE LIMITED TO THE DURATION OF THE EXPRESS WARRANTY. SOME JURISDICTIONS DO NOT ALLOW LIMITATION ON HOW LONG AN IMPLIED WARRANTY LASTS, SO THE ABOVE LIMITATION MAY NOT APPLY TO YOU. IN NO EVENT SHALL SANDISK OR ANY AFFILIATED OR SUBSIDIARY COMPANY BE LIABLE UNDER ANY CIRCUMSTANCES FOR ANY DIRECT, INDIRECT, OR CONSEQUENTIAL DAMAGES, ANY FINANCIAL LOSS OR ANY LOST DATA OR IMAGE, EVEN IF SANDISK HAS BEEN ADVISED OF THE POSSIBILITY OF SUCH DAMAGE. SOME JURISDICTIONS DO NOT ALLOW THE EXCLUSION OR LIMITATION OF INCIDENTAL OR CONSEQUENTIAL DAMAGES, SO THE ABOVE LIMITATION OR EXCLUSION MAY NOT APPLY TO YOU. IN NO EVENT WILL SANDISK'S LIABILITY EXCEED THE AMOUNT PAID BY YOU FOR THE PRODUCT.

End User License Agreement

SANDISK CORPORATION
END USER LICENSE AGREEMENT

DO NOT DOWNLOAD, INSTALL OR USE THE SOFTWARE UNTIL YOU HAVE CAREFULLY READ THE TERMS OF THIS END USER LICENSE AGREEMENT ("AGREEMENT"). BY DOWNLOADING, USING OR INSTALLING THE SOFTWARE, YOU AGREE TO ALL OF THE TERMS OF THIS AGREEMENT. IF YOU DO NOT AGREE TO ALL OF THE TERMS, DO NOT DOWNLOAD, INSTALL OR USE THE SOFTWARE AND, IF APPLICABLE, PROMPTLY RETURN IT TO YOUR PLACE OF PURCHASE FOR A

REFUND. IF THE SOFTWARE WAS INCLUDED WITH YOUR PURCHASE OF HARDWARE, YOU MUST RETURN THE ENTIRE HARDWARE/SOFTWARE PACKAGE IN ORDER TO OBTAIN A REFUND. IF THE SOFTWARE WAS ACCESSED ELECTRONICALLY, CLICK "NOT ACCEPT" TO STOP THE DOWNLOAD PROCESS.

The firmware, computer programs, device drivers, data or information ("Software") is provided to each person who downloads, uses or installs the Software ("you" or "your") under the terms of this Agreement between you and SanDisk Corporation ("SanDisk," "we," or "us"), and may be subject to additional terms and conditions in an agreement between you and SanDisk's third party licensors ("Licensors"). The Software is owned by SanDisk or its Licensors. The Software is protected by copyright laws and international copyright treaties, as well as other intellectual property laws and treaties.

Software License. Subject to the terms and conditions contained herein, SanDisk grants to you a limited, non-exclusive, non-sub licensable, transferable in accordance with these terms, royalty-free license under SanDisk's intellectual property rights to use the Software in executable form solely for your personal use only with a SanDisk product and only on a single computer or other hardware device at any given time (the "License"). The Software is "in use" when it is either downloaded, copied, loaded into RAM or installed into the hard disk or other permanent memory of a computer or other hardware device.

Restrictions. SanDisk and its Licensors retain all rights in the Software not expressly granted to you. You may not modify, adapt, translate or create derivative works (new versions) of the Software. No source code is provided under this Agreement. You may not reverse engineer, disassemble, decompile, rent, lease, or encumber the Software, or re-create or discover the source code of the Software. You may not embed or combine the Software within any other software product or device. The Software contains proprietary and confidential information of SanDisk and its Licensors, which you agree not to discover or reveal to others. Any and all permitted copies of the Software that you make or distribute must be unmodified, must contain all of the original Software's proprietary notices, and must include or be accompanied by this Agreement. You may not separate the Software into component parts for sublicense, distribution or transfer to a third party.

DISCLAIMER OF WARRANTIES. TO THE MAXIMUM EXTENT PERMITTED BY APPLICABLE LAW, THE SOFTWARE IS PROVIDED "AS IS" AND "AS AVAILABLE" WITH NO WARRANTIES AND NEITHER SANDISK NOR ITS LICENSORS MAKE ANY REPRESENTATION OR WARRANTY, STATUTORY OR OTHERWISE, IN LAW OR FROM THE COURSE OF DEALING OR USAGE OF TRADE, EXPRESS OR IMPLIED, INCLUDING WITHOUT LIMITATION, ANY WARRANTIES OF MERCHANTABILITY, FITNESS FOR A PARTICULAR PURPOSE, NON-INTERFERENCE, OR NON-INFRINGEMENT OF ANY THIRD PARTY INTELLECTUAL PROPERTY RIGHTS, OR EQUIVALENTS UNDER THE LAWS OF ANY JURISDICTION. YOU ASSUME THE ENTIRE RISK AS TO THE QUALITY AND PERFORMANCE OF THE SOFTWARE. SHOULD THE SOFTWARE PROVE

DEFECTIVE, YOU, AND NOT SANDISK, ITS LICENSORS OR RESELLERS, ASSUME THE ENTIRE COST OF NECESSARY SERVICING, REPAIR, OR CORRECTION.

LIMITATION OF LIABILITY. TO THE EXTENT NOT PROHIBITED BY LAW, IN NO EVENT WILL SANDISK OR ITS LICENSORS, OR THEIR RESPECTIVE DIRECTORS, OFFICERS, EMPLOYEES, CONSULTANTS, LICENSORS, LICENSEES OR AFFILIATES, BE LIABLE FOR ANY INDIRECT, INCIDENTAL, SPECIAL, CONSEQUENTIAL, OR EXEMPLARY DAMAGES, ARISING OUT OF OR IN CONNECTION WITH THE DOWNLOAD, DISTRIBUTION, USE OR PERFORMANCE OR NON-PERFORMANCE OF THE SOFTWARE, EVEN IF SANDISK HAS BEEN ADVISED OF THE POSSIBILITY OF SUCH DAMAGES. THE FOREGOING LIMITATIONS OF LIABILITY SHALL APPLY NOTWITHSTANDING ANY FAILURE OF ANY REMEDY PROVIDED FOR HEREUNDER IN ITS ESSENTIAL PURPOSE. IN NO EVENT WILL SANDISK'S OR ITS LICENSORS' TOTAL LIABILITY TO YOU EXCEED THE AMOUNT YOU PAID TO US FOR THE USE OF THE SOFTWARE.

5. The Software is provided with "RESTRICTED RIGHTS." Use, duplication or disclosure by the Government is subject to restrictions as set forth in FAR 52.227-14 and DFARS 252.227-7013 et seq. Use of the Software by the Government constitutes acknowledgement of SanDisk's proprietary rights therein. Contractor or Manufacturer is SanDisk Corporation, 601 McCarthy Blvd., Milpitas, CA 95035.

6. Transfer. If you sell or otherwise transfer the SanDisk product that incorporates the Software as a whole, you may transfer the Software as fully integrated into such product provided that you also supply this Agreement to the purchaser or recipient of the product, at which time all of your rights under this Agreement will immediately cease. Except as stated above, you may not assign or transfer this Agreement in part or in whole, and any attempt to do so shall be void.

7. Termination. We may terminate this Agreement and the license immediately and without notice if you breach it. Upon termination of this Agreement, you must delete or destroy all copies of the Software.

8. High Risk Activities. The Software is not fault-tolerant and is not designed or intended for use in hazardous environments requiring fail-safe performance, or any other application in which the failure of the Software could lead directly to death, personal injury, or severe physical or property damage (collectively, "High Risk Activities"). SANDISK AND ITS LICENSORS DISCLAIM ANY EXPRESS OR IMPLIED WARRANTY OF FITNESS FOR HIGH RISK ACTIVITIES AND SHALL NOT BE LIABLE FOR ANY LIABILITIES OR DAMAGES ARISING FROM SUCH USE.

9. General. This Agreement contains the entire understanding between the parties with respect to your use of the Software. If any part of this Agreement is found void and unenforceable, it will not affect the validity of the balance of this Agreement, which shall remain valid and enforceable according to its terms. This Agreement is governed by and construed under the laws of the State of California and controlling U.S. federal law without regard to conflicts

of laws provisions thereof. The U.N. Convention on Contracts for the International Sale of Goods shall not apply to this Agreement. Any action or proceeding arising from or relating to this Agreement shall be adjudicated in the state or federal courts of Santa Clara County, California, and the parties hereby agree to the exclusive jurisdiction and venue of such courts. You will not remove or export from the United States or re-export from anywhere any part of the Software or any direct product thereof to any country in violation of U.S. Export Administration Regulations, or a successor thereto, except in compliance with and with all licenses and approvals required under applicable export laws and regulations including, without limitation, those of the U.S. Department of Commerce. Any waivers or amendments of this Agreement shall be effective only if made in writing and signed by an authorized representative of each party. You agree that the Licensors are third party beneficiaries of this Agreement to enforce your performance of the terms and conditions of this Agreement. The provisions of Sections 2, 3, 4, 5, 6, 7, 8 and 9 shall survive the termination or expiration of this Agreement.

FCC Regulation

This device complies with part 15 of the FCC Rules. Operation is subject to the following two conditions:

1. This device may not cause harmful interference, and
2. This device must accept any interference received, including interference that may cause undesired operation.

This equipment has been tested and found to comply with the limits for a Class B digital device, pursuant to Part 15 of the FCC Rules. These limits are designed to provide reasonable protection against harmful interference in a residential installation. This equipment generates, uses, and can radiate radio frequency energy and, if not installed and used in accordance with the instructions, may cause harmful interference to radio communications. However, there is no guarantee that interference will not occur in a particular installation. If this equipment does cause interference to radio or television reception, which can be determined by turning the equipment off and then on, the user is encouraged to try to correct the interference by one or more of the following measures:

1. Increase the separation between the equipment and receiver.
2. Correct the equipment to a different outlet so that the equipment and receiver are on different branch circuits.
3. Consult the dealer or an experienced radio / TV technician for help.