



Förderketten Conveyor chains



iwis ist ein kompetenter Partner für klassische Förderketten nach DIN 8187 und DIN 8165. Durch Modifizierungen, aufbauend auf ELITE Förderketten, bieten wir unseren Kunden eine Vielzahl von Einsatzmöglichkeiten, auch abweichend von der Norm.

iwis is a highly qualified partner for standard conveyor chains according to DIN 8187 and DIN 8165. By modifying ELITE Standard conveyor chains according to customer needs, ELITE offers a wide conveyor chains program, also deviant from the norm.

Hochleistungsrollenketten
High precision roller chains



Rollenketten für Förderaufgaben
Roller chains for conveying purposes



Stauförderketten
Accumulation Chains



Rollenketten aus rostfreiem Stahl
Stainless Steel Roller Chains

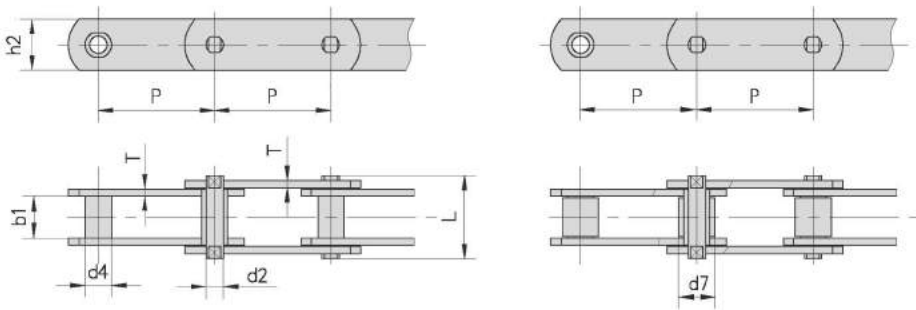


Förderketten
Conveyor chains



Kettentyp Chain no.	Teilung Pitch								Rollen Ø Roller diameter			Buchsen Ø Bush diameter
	P mm								d1 max mm	d7 max mm	d5 max mm	d4 max mm
M20	*40,0	50,0	63,0	80,0	100,0	125,0	160,0		25,0	12,50	32,00	9,0
M28	*50,0	63,0	80,0	100,0	125,0	160,0	200,0		30,0	15,00	36,00	10,0
M40	63,0	80,0	100,0	125,0	160,0	200,0	250,0		36,0	18,00	42,00	12,5
M56	*63,0	80,0	100,0	125,0	160,0	200,0	250,0		42,0	21,00	50,00	15,0
M80	80,0	100,0	125,0	160,0	200,0	250,0	315,0		50,0	25,00	60,00	18,0
M112	*80,0	100,0	125,0	160,0	200,0	250,0	315,0	400,0	60,0	30,00	70,00	21,0
M160	*100,0	125,0	160,0	200,0	250,0	315,0	400,0	500,0	70,0	36,00	85,00	25,0
M224	*125,0	160,0	200,0	250,0	315,0	400,0	500,0	630,0	85,0	42,00	100,00	30,0
M315	*160,0	200,0	250,0	315,0	400,0	500,0	630,0		100,0	50,00	120,00	36,0
M450	200,0	250,0	315,0	400,0	500,0	630,0	800,0		120,0	60,00	140,00	42,0

* Ausführung als Buchsenkette oder mit Schonrolle
 * Type as bush or with small rollers

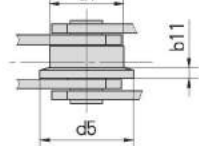
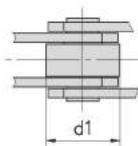
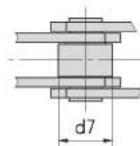
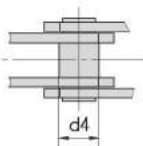


ohne Rollen
without roller

S (mit kleiner Rolle)
S (small roller type)

P (mit großer Rolle)
P (large roller type)

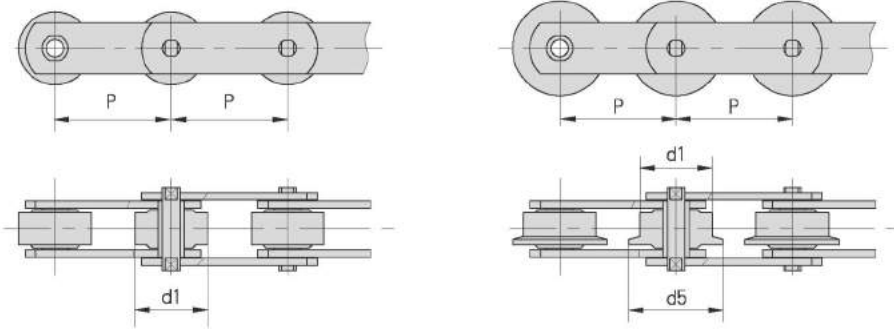
F (mit Spurkranz Rolle)
F (with flanged roller type)




Förderketten (M-Serie) nach DIN 8167

Conveyor chains (M series) according to DIN 8167

Kettentyp Chain no.	Lichte Weite Width between inner plates	Bolzen Ø Pin diameter	Bolzenlänge Pin length	Laschen- höhe Plate depth	Laschendicke Platethickness	min. Bruchkraft min. tensile strength	Durchschn. Bruchlast Average tensile strength
ISO	b1 min mm	d2 max mm	L max mm	h2 max mm	T max mm	Q min kN/LB	Q0 kN
M20	16,0	6,0	35,0	19,0	2,5	20,0/4545	25,0
M28	18,0	7,0	40,0	21,0	3,0	28,0/6364	35,0
M40	20,0	8,5	45,0	26,0	3,5	40,0/9091	50,0
M56	24,0	10,0	52,0	31,0	4,0	56,0/12727	70,0
M80	28,0	12,0	62,0	36,0	5,0	80,0/18182	100,0
M112	32,0	15,0	73,0	41,0	6,0	112,0/25454	140,0
M160	37,0	18,0	85,0	51,0	7,0	160,0/36364	200,0
M224	43,0	21,0	98,0	62,0	8,0	224,0/50909	280,0
M315	48,0	25,0	112,0	72,0	10,0	315,0/71591	393,7
M450	56,0	30,0	135,0	82,0	12,0	450,0/102272	562,5



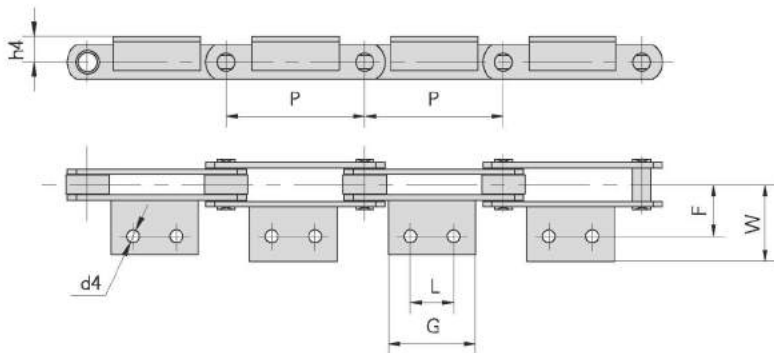


Tel: +49 2739 86-0 Fax: +49 2739 86-22
sales-wilnsdorf@iwis.com www.iwis.com



Förderketten (M-Serie) nach DIN 8167
Conveyor chains (M series) according to DIN 8167

Kettentyp Chain no.	P	L	G	d4	F	W	h4
	mm	mm	mm	mm	mm	mm	mm
M20	40,0	-	14,0	6,6	27,0	40,0	16,0
	50,0	-	14,0				
	63,0	20,0	35,0				
	80,0	35,0	50,0				
M28	50,0	-	20,0	9,0	32,0	47,0	20,0
	63,0	-	20,0				
	80,0	25,0	45,0				
	100,0	40,0	60,0				
M40	63,0	-	31,0	9,0	35,0	50,0	25,0
	80,0	20,0	45,0				
	100,0	40,0	60,0				
	125,0	65,0	85,0				
M56	63,0	-	22,0	11,0	44,0	61,0	30,0
	80,0	-	30,0				
	100,0	25,0	50,0				
	125,0	50,0	75,0				
M80	160,0	85,0	110,0	11,0	48,0	65,0	35,0
	80,0	-	30,0				
	100,0	25,0	50,0				
	125,0	50,0	75,0				
	200,0	125,0	150,0				



Hochleistungsrollenkettensysteme
High precision roller chains

Rollenkettensysteme für Förderaufgaben
Roller chains for conveying purposes

Stauförderketten
Accumulation Chains

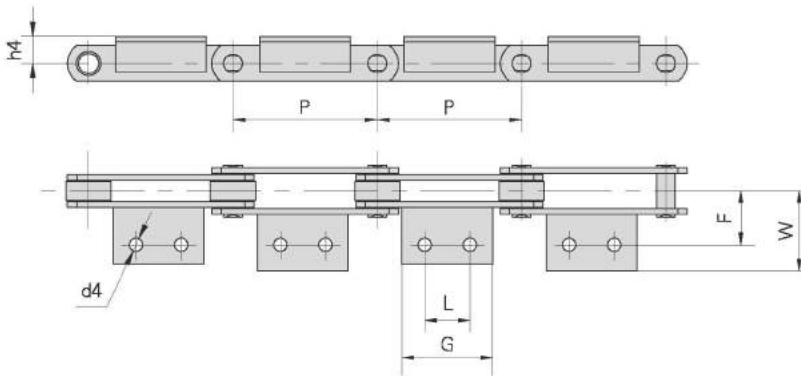
Rollenkettensysteme aus rostfreiem Stahl
Stainless Steel Roller Chains

Förderketten
Conveyor chains


Förderketten (M-Serie) nach DIN 8167

Conveyor chains (M series) according to Din 8167

Kettentyp Chain no.	P	L	G	d4	F	W	h4
ISO	mm	mm	mm	mm	mm	mm	mm
M112	80,0	-	28,0	14,0	55,0	80,0	40,0
	100,0	-	40,0				
	125,0	35,0	65,0				
	160,0	65,0	95,0				
	200,0	100,0	130,0				
M160	100,0	-	30,0	14,0	62,0	85,0	45,0
	125,0	25,0	50,0				
	160,0	50,0	80,0				
	200,0	85,0	115,0				
	250,0	145,0	175,0				
M224	125,0	-	35,0	18,0	70,0	100,0	55,0
	160,0	-	60,0				
	200,0	65,0	100,0				
	250,0	125,0	160,0				
	315,0	190,0	230,0				
M315	160,0	-	35,0	18,0	80,0	115,0	65,0
	200,0	50,0	85,0				
	250,0	100,0	140,0				
	315,0	155,0	190,0				
	400,0	155,0	205,0				





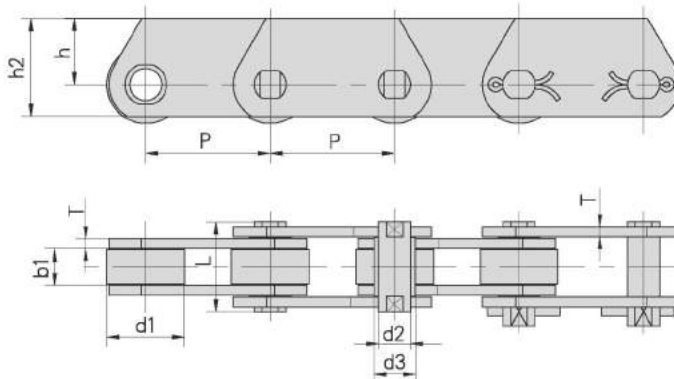
Förderketten (MT-Serie) nach DIN 8167, Traglaschenkette

Conveyor chains (MT series) according to DIN 8167, Deep link chain

Kettentyp Chain no.	Teilung Pitch					Rollen Ø Roller diameter	Bolzen Ø Pin diameter	Buchsen Ø Bush diameter	Laschen dicke Plate thickness
DIN	P					d1 max	d2 max	d3 max	T max
	mm					mm	mm	mm	mm
MT20	40,0	50,0	63,0	80,0	100,0	25,0	6,0	9,0	2,5
MT28	50,0	63,0	80,0	100,0	125,0	30,0	7,0	10,0	3,0
MT40	63,0	80,0	100,0	125,0	160,0	36,0	8,5	12,5	3,5
MT56	63,0	80,0	100,0	125,0	160,0	42,0	10,0	15,0	4,0
MT80	80,0	100,0	125,0	160,0	200,0	50,0	12,0	18,0	5,0
MT112	80,0	100,0	125,0	160,0	200,0	60,0	15,0	21,0	6,0
MT160	100,0	125,0	160,0	200,0	250,0	70,0	18,0	25,0	7,0
MT224	125,0	160,0	200,0	250,0	315,0	85,0	21,0	30,0	8,0
MT315	160,0	200,0	250,0	315,0	400,0	100,0	25,0	36,0	10,0
MT450	200,0	250,0	315,0	400,0	500,0	120,0	30,0	42,0	12,0

Kettentyp Chain no.	Lichte Weite Width between inner plates	Bolzenlänge Pin length	Laschenhöhe Plate depth		min. Bruchkraft min. tensile strength	
DIN	b1 min	L max	h2 max	h max	Q min	*Q min
	mm	mm	mm	mm	kN/LB	kN/LB
MT20	16,0	35,0	25,0	16,0	20,0/4545	32,0/7270
MT28	18,0	40,0	30,0	20,0	28,0/6364	42,0/9545
MT40	20,0	45,0	35,0	22,5	40,0/9091	60,0/13635
MT56	24,0	52,0	45,0	30,0	56,0/12727	85,0/19318
MT80	28,0	62,0	50,0	32,5	80,0/18182	125,0/28408
MT112	32,0	73,0	60,0	40,0	112,0/25454	175,0/39768
MT160	37,0	85,0	70,0	45,0	160,0/36364	260,0/59090
MT224	43,0	98,0	90,0	60,0	224,0/50909	340,0/77272
MT315	48,0	112,0	100,0	65,0	315,0/71591	520,0/118180
MT450	56,0	135,0	120,0	80,0	450,0/102272	700,0/159089

*Q - Höhere Bruchlast durch härtere Laschen
Higher breaking load with hardened plates



Hocheleistungsrollenkettensysteme
 High precision roller chains
 iwis
 Rollenketten für Förderaufgaben
 Roller chains for conveying purposes
 iwis
 Stauförderketten
 Accumulation Chains
 iwis
 Rollenketten aus rostfreiem Stahl
 Stainless Steel Roller Chains
 iwis
 Förderketten
 Conveyor chains
 iwis

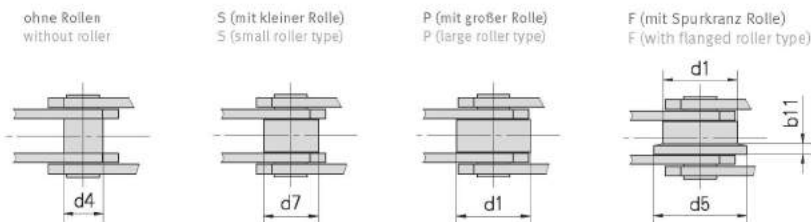
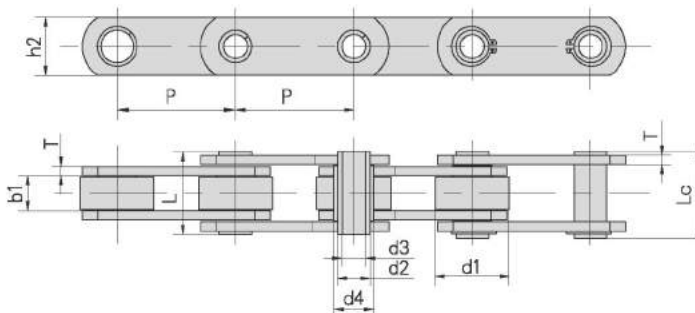

Hohlbolzenketten (MC-Serie) nach DIN 8168

Hollow pin conveyor chains (MC series) according to DIN 8168

Kettentyp Chain no.	Teilung Pitch						Rollenabmessungen Roller dimension				Buchsen Ø Bush diameter	Laschen höhe Plate depth
	P						d1 max	d7 max	d5 max	b11	d4 max	h2 max.
	mm						mm	mm	mm	mm	mm	mm
MC28	63,0	80,0	100,0	125,0	160,0	250,0	36,0	25,0	45,0	4,5	17,0	25,0
MC56	80,0	100,0	125,0	160,0	200,0	250,0	50,0	30,0	60,0	5,0	21,0	35,0
MC112	100,0	125,0	160,0	200,0	250,0	315,0	70,0	42,0	85,0	7,0	29,0	50,0
MC224	160,0	200,0	250,0	315,0	400,0	500,0	100,0	60,0	120,0	10,0	41,0	70,0

Kettentyp Chain no.	Lichte Weite Width between inner plates		Bolzen Ø Pin diameter		Bolzenlänge Pin length		Laschendicke Plate thickness	Bruchlast Breaking load	
	b1 min	d2 max	d3 min	L max	Lc max	T max	Q min	*Q min	
	mm	mm	mm	mm	mm	mm	KN/LB	KN/LB	
MC28	20,0	13,0	8,2	36,0	38,5	3,0	28,0/6364	40,0/9091	
MC56	24,0	15,5	10,2	45,0	47,5	4,0	56,0/12727	90,0/20454	
MC112	32,0	22,0	14,3	62,5	64,3	6,0	112,0/25454	180,0/40908	
MC224	43,0	30,0	20,3	83,0	85,5	8,0	224,0/50909	350,0/79544	

*Q - Höhere Bruchlast durch härtere Laschen
 Higher breaking load with hardened plates.



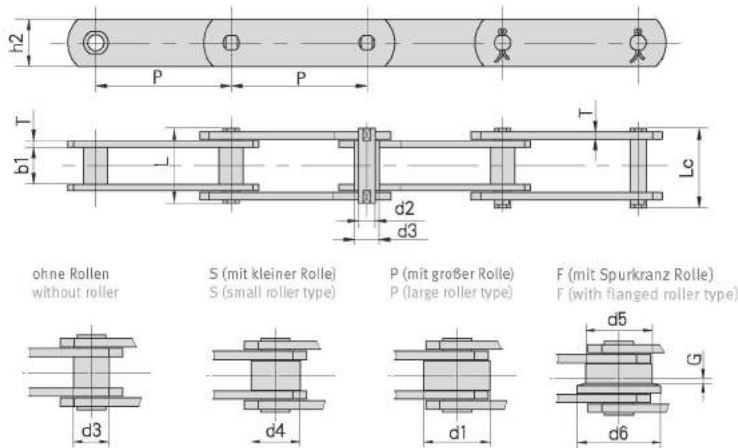


Förderketten (FV-Serie) nach DIN 8165
Conveyor chains (FV series) according to DIN 8165

Kettentyp Chain no.	Teilung Pitch							Rollen- abmessungen Roller dimension					Büchsen Ø Bush diameter
	P							d1 max	d4 max	d5 max	d6 max	G	d3
	mm	mm	mm	mm	mm	mm	mm	mm	mm	mm	mm	mm	mm
FV40	50,0	63,0	80,0	100,0	125,0			32,0	20,0	40,0	50,0	4,0	15,0
FV63	63,0	80,0	100,0	125,0	160,0			40,0	26,0	50,0	63,0	5,0	18,0
FV90	63,0	80,0	100,0	125,0	160,0	200,0	250,0	48,0	30,0	63,0	78,0	6,5	20,0
FV112	100,0	125,0	160,0	200,0	250,0			55,0	32,0	72,0	90,0	7,5	22,0
FV140	100,0	125,0	160,0	200,0	250,0			60,0	36,0	80,0	100,0	9,0	26,0
FV180	125,0	160,0	200,0	250,0	315,0			70,0	42,0	100,0	125,0	13,0	30,0
FV250	160,0	200,0	250,0	315,0	400,0			80,0	50,0	125,0	155,0	15,0	36,0
FV315	160,0	200,0	250,0	315,0	400,0			90,0	60,0	140,0	175,0	18,0	42,0

Kettentyp Chain no.	Lichte Weite	Bolzen Ø	Bolzenlänge		Laschenhöhe	Laschendicke	min. Bruchkraft	
	Width between inner plates	Pin diameter	Pin length		Plate depth	Plate thickness	min. tensile strength	
	b1 min	d2 max	Lmin	Lc max	h2 max	T max	Q min	*Q min
DIN	mm	mm	mm	mm	mm	mm	kN/LB	kN/LB
FV40	18,0	10,0	36,0	39,0	25,0	3,0	40,0/9091	47,0/10681
FV63	22,0	12,0	45,0	48,5	30,0	4,0	63,0/14317	75,0/17045
FV90	25,0	14,0	53,0	56,5	35,0	5,0	90,0/20453	115,0/26136
FV112	30,0	16,0	62,0	66,0	40,0	6,0	112,0/25452	170,0/38536
FV140	35,0	18,0	67,0	71,5	45,0	6,0	140,0/31815	180,0/40908
FV180	45,0	20,0	86,0	92,0	50,0	8,0	180,0/40908	250,0/56817
FV250	55,0	26,0	97,0	103,5	60,0	8,0	250,0/56817	300,0/68181
FV315	65,0	30,0	113,0	126,5	70,0	10,0	315,0/71591	480,0/109089

*Q - Höhere Bruchlast durch härtere Laschen
Higher breaking load with hardened plates



Hochleistungsrollenkettensysteme
High precision roller chains

Rollenkettensysteme für Förderaufgaben
Roller chains for conveying purposes

Stauförderketten
Accumulation Chains

Rollenkettensysteme aus rostfreiem Stahl
Stainless Steel Roller Chains

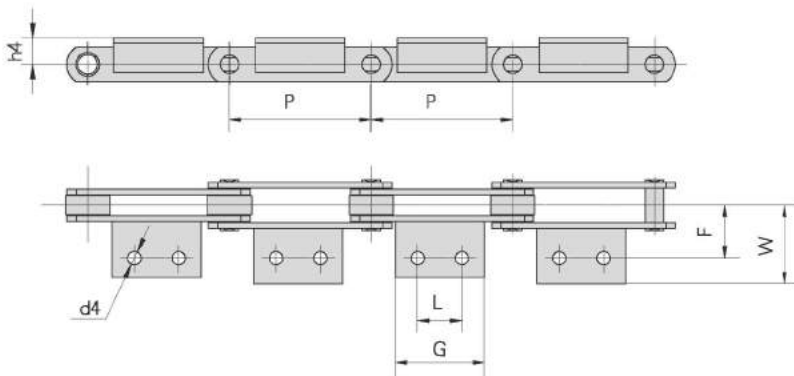
Förderketten
Conveyor chains



Förderketten (FV-Serie) nach DIN 8165

Conveyor chains (FV series) according to DIN 8165

Kettentyp Chain no.	P	L	G	d4	F	W	h4
DIN	mm	mm	mm	mm	mm	mm	mm
FV40	50,0	-	45,0	6,5	25,0	64,0	20,0
	63,0	-	31,0				
	80,0	25,0	45,0				
	100,0	30,0	50,0				
	125,0	30,0	60,0				
FV63	63,0	-	40,0	8,4	34,0	50,0	30,0
	80,0	25,0	45,0				
	100,0	30,0	50,0				
	125,0	40,0	60,0				
	160,0	50,0	70,0				
FV90	63,0	-	30,0	8,4	40,0	64,0	35,0
	80,0	25,0	45,0				
	100,0	30,0	50,0				
	125,0	40,0	60,0				
	160,0	50,0	70,0				
	200,0	60,0	80,0				
	250,0	65,0	85,0				
FV112	100,0	30,0	50,0	11,0	50,0	70,0	40,0
	125,0	40,0	65,0				
	160,0	50,0	75,0				
	200,0	65,0	90,0				
	250,0	80,0	105,0				



Hochleistungsrollenketten
High precision roller chains
iwis

Rollenketten für Förderaufgaben
Roller chains for conveying purposes
iwis

Stauförderketten
Accumulation Chains
iwis

Rollenketten aus rostfreiem Stahl
Stainless Steel Roller Chains
iwis

Förderketten
Conveyor chains
iwis

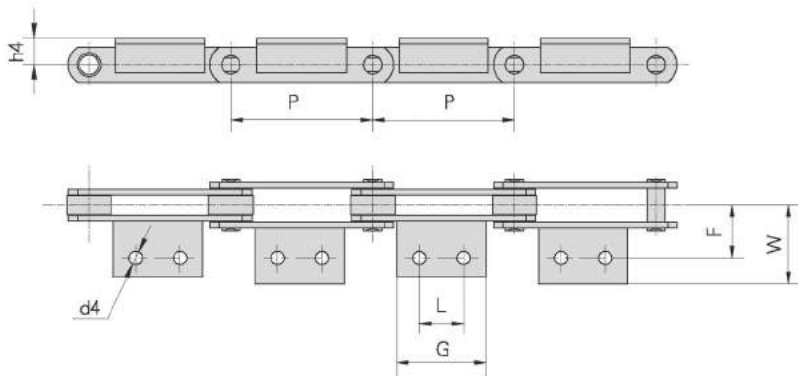


Tel: +49 2739 86-0 Fax: +49 2739 86-22
sales-wilnsdorf@iwis.com www.iwis.com



Förderketten (FV-Serie) nach DIN 8165
Conveyor chains (FV series) according to DIN 8165

Kettentyp Chain no.	P	L	G	d4	F	W	h4
DIN	mm	mm	mm	mm	mm	mm	mm
FV140	100,0	30,0	55,0	11,0	50,0	81,0	45,0
	125,0	40,0	65,0				
	160,0	50,0	75,0				
	200,0	65,0	90,0				
	250,0	80,0	105,0				
FV180	125,0	35,0	63,0	13,0	64,0	91,0	45,0
	160,0	50,0	80,0				
	200,0	65,0	95,0				
	250,0	80,0	110,0				
	315,0	100,0	130,0				
FV250	160,0	50,0	80,0	14,0	69,0	106,0	55,0
	200,0	65,0	95,0				
	250,0	80,0	110,0				
	315,0	100,0	130,0				
	400,0	100,0	130,0				
FV315	160,0	-	50,0	14,0	85,0	130,0	60,0
	200,0	65,0	95,0				
	250,0	80,0	110,0				
	315,0	100,0	130,0				
	400,0	100,0	130,0				



Hochleistungsrollenkettensysteme
High precision roller chains

Rollenkettensysteme für Förderaufgaben
Roller chains for conveying purposes

Stauförderketten
Accumulation Chains

Rollenkettensysteme aus rostfreiem Stahl
Stainless Steel Roller Chains

Förderketten
Conveyor chains



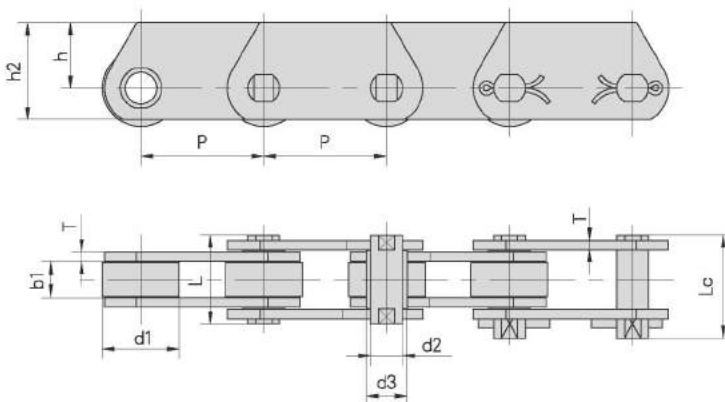
Förderketten (FVT-Serie) nach DIN 8165, Traglaschenkette

Conveyor chains (FVT series) according to DIN 8165, Deep link chain

Kettentyp Chain no.	Teilung Pitch						Rollen Ø Roller diameter	Bolzen Ø Pin diameter	Buchsen Ø Bush diameter	Laschen dicke Plate thickness
DIN	P						d1 Ø max	d2 Ø max	d3 Ø max	Tmax
	mm						mm	mm	mm	mm
FVT40	50,0	63,0	80,0	100,0	125,0		32,0	10,0	15,0	3,0
FVT63	63,0	80,0	100,0	125,0	160,0		40,0	12,0	18,0	4,0
FVT90	63,0	80,0	100,0	125,0	160,0	200,0	250,0	48,0	14,0	5,0
FVT112	100,0	125,0	160,0	200,0	250,0			55,0	16,0	6,0
FVT140	100,0	125,0	160,0	200,0	250,0			60,0	18,0	6,0
FVT180	125,0	160,0	200,0	250,0	315,0			70,0	20,0	8,0
FVT250	160,0	200,0	250,0	315,0				80,0	26,0	8,0
FVT315	160,0	200,0	250,0	315,0	400,0			90,0	30,0	10,0

Kettentyp Chain no.	Lichte Weite Width between inner plates	Bolzenlänge Pin length		Laschenhöhe Plate depth		min. Bruchkraft min. tensile strength	
DIN	b1 min	L max	Lc max	h2 max	h ax	Q min	Q min
	mm	mm	mm	mm	mm	kN/LB	kN/LB
FVT40	18,0	36,0	39,0	35,0	22,5	40,0/9091	47,0/10681
FVT63	22,0	45,0	48,5	40,0	25,0	63,0/14317	75,0/17045
FVT90	25,0	53,0	56,5	45,0	27,5	90,0/20453	115,0/26136
FVT112	30,0	62,0	66,0	50,0	30,0	112,0/25452	170,0/38636
FVT140	35,0	67,0	71,5	60,0	37,5	140,0/31815	180,0/40908
FVT180	45,0	86,0	92,0	70,0	45,0	180,0/40908	250,0/56817
FVT250	55,0	97,0	103,5	80,0	50,0	250,0/56817	300,0/68181
FVT315	65,0	113,0	126,5	90,0	55,0	315,0/71591	480,0/109089

*Q - Höhere Bruchlast durch härtere Laschen
Higher breaking load with hardened plates





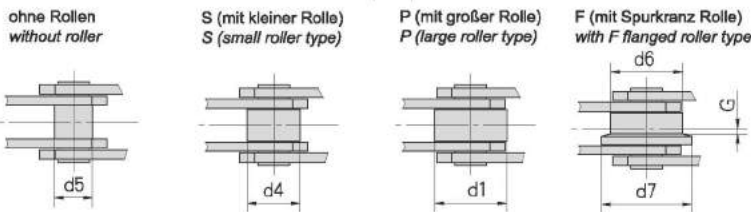
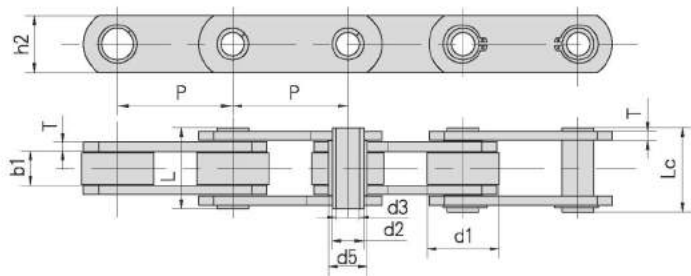
Tel: +49 2739 86-0 Fax: +49 2739 86-22
sales-wilnsdorf@iwis.com www.iwis.com



Hohlbolzenketten (FVC-Serie)
Hollow pin conveyor chains (FVC series)

Kettentyp Chain no.	Teilung Pitch							Rollenabmessungen Roller dimension				
	P							d1 Ø max	d4 Ø max	d6 Ø max	d7 Ø max	G
	mm	mm	mm	mm	mm	mm	mm	mm	mm	mm	mm	
FVC63	63,0	80,0	100,0	125,0	160,0			40,0	26,0	50,0	63,0	5,0
FVC90	63,0	80,0	100,0	125,0	160,0	200,0	250,0	48,0	30,0	63,0	78,0	6,5
FVC112	100,0	125,0	160,0	200,0	250,0			55,0	32,0	72,0	90,0	7,5
FVC140	100,0	125,0	160,0	200,0	250,0			60,0	36,0	80,0	100,0	9,0
FVC180	125,0	160,0	200,0	250,0	315,0			70,0	42,0	100,0	125,0	13,0
FVC250	160,0	200,0	250,0	315,0	400,0			80,0	50,0	125,0	155,0	15,0
FVC315	160,0	200,0	250,0	315,0	400,0			90,0	60,0	140,0	175,0	18,0

Kettentyp Chain no.	Lichte Weite Width between inner plates	Bolzen Ø Pin diameter	Buchsen Ø Bush diameter	Bolzenlänge Pin length	Laschendicke Plate thickness	Laschenhöhe Plate depth	min. Bruchkraft min. tensile strength
DIN	b1 min	d2 Ø max	d3 Ø min	d5 Ø max	L max	Lc max	Q min
	mm	mm	mm	mm	mm	mm	KN/LB
FVC63	22,0	12,0	8,0	18,0	45,0	50,5	46,0/10454
FVC90	25,0	14,0	10,0	20,0	53,0	56,5	73,0/16590
FVC112	30,0	16,0	11,0	22,0	62,0	63,0	90,0/20454
FVC140	35,0	18,0	12,0	26,0	67,0	68,5	110,0/25000
FVC180	45,0	20,0	14,0	30,0	86,0	88,0	145,0/32954
FVC250	55,0	26,0	18,0	36,0	97,0	103,5	215,0/48863
FVC315	65,0	30,0	20,0	42,0	117,0	121,5	295,0/67044



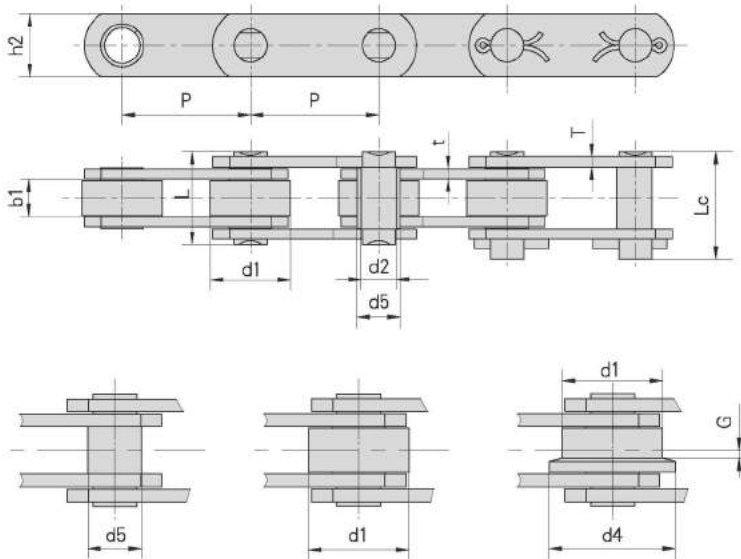
Hocheistungsketten High precision roller chains
 Rollenketten für Förderaufgaben Roller chains for conveying purposes
 Stauförderketten Accumulation Chains
 Rollenketten aus rostfreiem Stahl Stainless Steel Roller Chains
 Förderketten Conveyor chains



Förderketten (Z-Serie)
Conveyor chains (Z series)

Kettentyp Chain no.	Teilung Pitch							Rollenabmessungen Roller dimension			Buchsen Ø Bush diameter
	P							d1 Ø max	d4 Ø max	G	d5 max
	mm	mm	mm	mm	mm	mm	mm	mm	mm	mm	
Z40	50,8	63,5	76,2	88,9	101,6	127,0	152,4	31,75	40,0	2,5	17,0
Z100	76,2	88,9	101,6	127,0	152,4	177,8	203,2	47,50	60,0	3,5	23,0
Z160	101,6	127,0	152,4	177,8	203,2	228,6	254,0	66,70	82,0	3,5	33,0
Z300	152,4	177,8	203,2	254,0	304,8			88,90	114,0	8,5	38,0

Kettentyp Chain no.	Lichte Weite Width between inner plates	Bolzen Ø Pin diameter	Laschenhöhe Plate depth	Bolzenlänge Pin length		Laschendicke Plate thickness	Bruchlast Breaking load	
	b1 min	d2 Ø max	h2 min	L max	Lc max	t/T min	Q min	*Q min
	mm	mm	mm	mm mm	mm	kN/LB		kN/LB
Z40	15,0	14,0	25,0	37,0	40,5	4,0	40,0/9091	50,0/11362
Z100	19,0	19,0	40,0	45,0	50,5	5,0/4,0	100,0/22725	130,0/29540
Z160	26,0	26,9	50,0	58,0	63,5	7,0/5,0	156,0/35451	200,0/45454
Z300	38,0	32,0	60,0	84,0	94,0	10,0/8,0	300,0/68175	380,0/86362



Hocheleistungsrollenketten
High precision roller chains
 Iwis
 Rollenketten für Förderaufgaben
Roller chains for conveying purposes
 Iwis
 Stauförderketten
Accumulation Chains
 Iwis
 Rollenketten aus rostfreiem Stahl
Stainless Steel Roller Chains
 Iwis
 Förderketten
Conveyor chains
 Iwis



Förderketten mit Anbauteilen (Z-Serie)

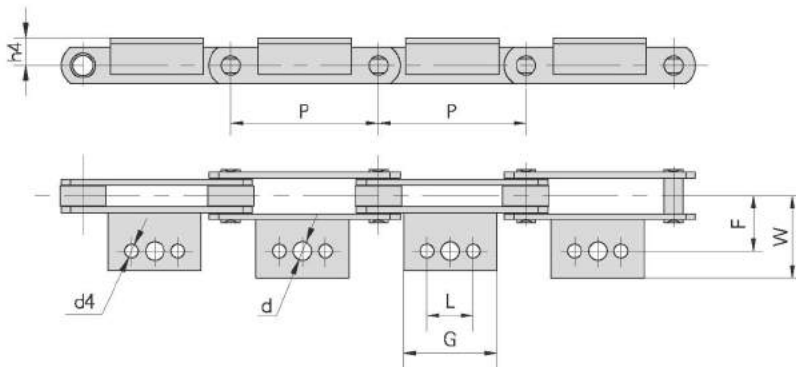
Conveyor chains with attachments (Z series)

Kettentyp Chain no.	P mm	L mm	G mm	d mm	d4 mm	F mm	W mm	h4 mm
Z40	△	50,8	-	45,0	10,7	9,3	38,1	19,0
	△	63,5						
	▲	76,2	22,2	43,0				
	▲	88,9		50,0				
	▲	101,6	38,1	64,0				
	▲	127,0	57,2	84,0				
Z100	△	76,2	-	30,0	14,0	10,5	44,5	32,0
	△	88,9						
	▲	101,6	31,8	64,0				
	△■	127,0	57,2	84,0				
	▲	152,4		114,5				
	△■	177,8	80,0	110,0				
Z160	△	101,6	-	35,0	15,5	12,3	54,0	38,0
	△■	127,0	31,7	56,0				
	△■	152,4		84,0				
	△■	177,8	57,2	130,0				
	△■	203,2	100,0	150,0				
	△■	254,0	135,0	170,0				
Z300	△	152,4		70,0	17,0	14,0	73,0	51,0
	△	177,8	38,1					
	△■	203,2	76,2	100,0				
	△■	254,0	90,0	152,4				
	△■	304,8	190,0	225,0				

△ Ketteneinbauteil mit einem Loch
Attachment with 1 hole

■ Ketteneinbauteil mit zwei Löchern
Attachment with 2 holes

▲ Ketteneinbauteil mit drei Löchern
Attachment with 3 holes



Hochleistungsrollenkettensysteme
High precision roller chains
Rollenketten für Förderaufgaben
Roller chains for conveying purposes
Stauförderketten
Accumulation Chains
Rollenketten aus rostfreiem Stahl
Stainless Steel Roller Chains
Förderketten
Conveyor chains



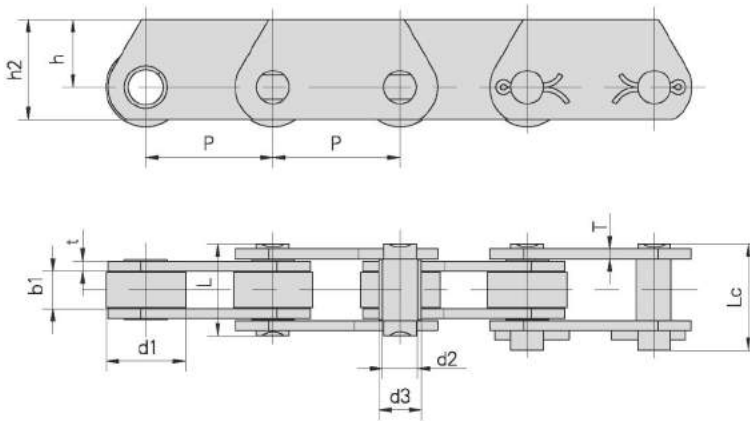
Förderketten (ZE-Serie), Traglaschenkette

Conveyor chains (ZE series), Deep link chain

Kettentyp Chain no.	Teilung Pitch								Rollen Ø Roller diameter	Bolzen Ø Pin diameter	Buchsen Ø Bush diameter
	P								d1 max	d2 max	d3 max
	mm								mm	mm	mm
ZE40	50,8	63,5	76,2	88,9	101,6	127,0	152,4	31,75	14,0	17,0	
ZE100	76,2	88,9	101,6	127,0	152,4	177,8	203,2	47,50	19,0	23,0	
ZE160	101,6	127,0	152,4	177,8	203,2	228,6	254,0	66,70	26,9	33,0	
ZE300	152,4	177,8	203,2	254,0	304,8			88,90	32,0	38,0	

Kettentyp Chain no.	Lichte Weite Width between inner plates	Bolzenlänge Pin length			Laschenhöhe Plate depth		Laschendicke Plate thickness	Bruchlast Breaking load	
	b1 min	Lmax	Lc max	h2 max	h max	t/T max	Q min	*Q min	
	mm	mm	mm	mm	mm	mm	kN/LB	kN/LB	
ZE40	15,0	37,0	40,5	40,0	27,0	4,0	40,0/9091	60,0/13636	
ZE100	19,0	45,0	50,5	50,0	30,0	5,0/4,0	100,0/22725	160,0/36360	
ZE160	26,0	58,0	63,5	70,0	45,0	7,0/5,0	160,0/36360	200,0/45454	
ZE300	38,0	84,0	94,0	90,0	60,0	10,0/8,0	300,0/68175	380,0/86362	

*Q - Höhere Bruchlast durch härtere Laschen
Higher breaking load with hardened plates



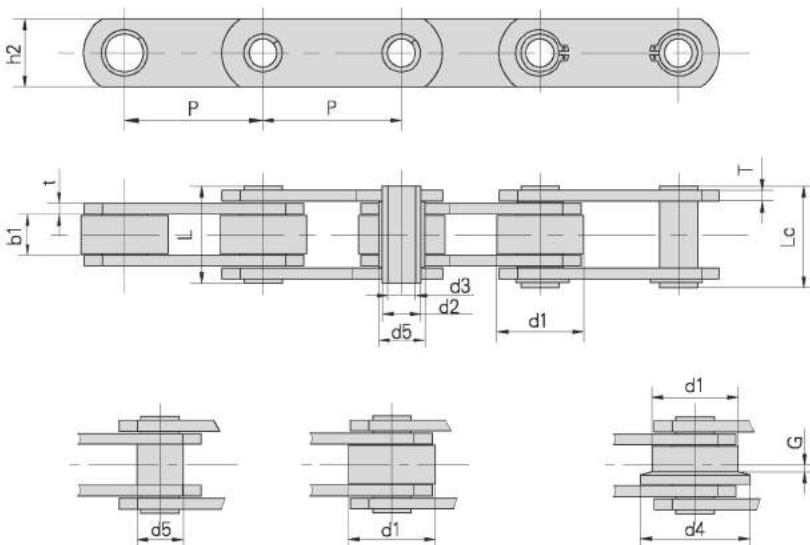


Hohlbolzenketten (ZC-Serie)
Hollow pin conveyor chains (ZC series)

Kettentyp Chain no.	Teilung Pitch							Rollenabmessungen Roller dimension			Buchsen Ø Bush diameter	Laschenhöhe Plate depth
	P							d1 max	d4 max	G	d5 max	h2 max
	mm							mm	mm	mm	mm	mm
ZC21	38,1	50,8	63,5	76,2				25,40			11,0	18,0
ZC40	50,8	63,5	76,2	88,9	101,6	127,0	152,4	31,75	40,0	2,5	17,0	25,0
ZC60	76,2	88,9	101,6	127,0	152,4	177,8	203,2	47,50	60,0	3,5	23,0	40,0
ZC150	101,6	127,0	152,4	177,8	203,2	228,6	254,0	66,70	82,0	4,0	33,0	50,0
ZC300	152,4	177,8	203,2	254,0	304,8			88,90	114,0	8,5	38,0	60,0

Kettentyp Chain no.	Lichte Weite Width between inner plates	Bolzen Ø Pin diameter		Bolzenlänge Pin length		Laschendicke Platethickness	Bruchlast Breaking load	
	b1 min	d2 max	d3 max	L max	Lc max	t/T max	Q min	*Q min
	mm	mm	mm	mm	mm	mm	kN/LB	kN/LB
ZC21	12,7	9,0	6,5	26,0	27,5	2,5	21,0/4772	
ZC40	15,0	14,0	10,2	36,4	37,7	4,0	40,0/9091	50,0/11362
ZC60	19,0	19,0	13,2	45,0	46,0	5,0/4,0	60,0/13636	120,0/27270
ZC150	26,0	26,9	20,2	58,0	60,5	7,0/5,0	150,0/34087	190,0/43177
ZC300	38,0	32,0	22,5	83,0	85,0	10,0/8,0	300,0/68175	380,0/86362

*Q - Höhere Bruchlast durch härtere Laschen
Higher breaking load with hardened plates



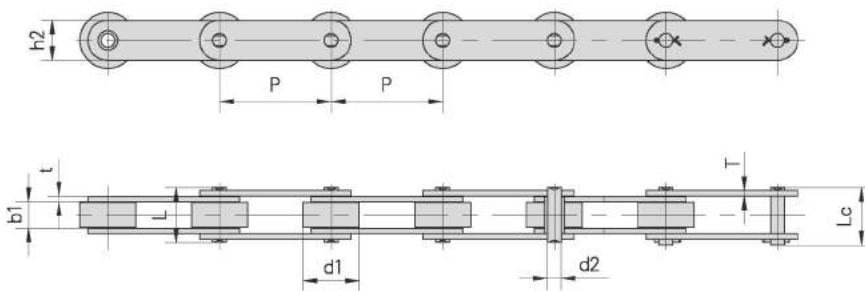
Hocheistungsketten High precision roller chains
 Rollenketten für Förderaufgaben Roller chains for conveying purposes
 Stauförderketten Accumulation Chains
 Rollenketten aus rostfreiem Stahl Stainless Steel Roller Chains
 Förderketten Conveyor chains



Förderketten nach Werksnorm

Conveyor chains according to Industry standard

Kettentyp Chain no.	Teilung Pitch	Rollen Ø Roller diameter	Lichte Weite Width between inner plates	Bolzen Ø Pin diameter	Bolzenlänge Pin length		Höhe Innenlasche Inner plate depth	Laschendicke Plate thickness	min. Bruchkraft min. tensile strength	Durchschn. Bruchlast Average tensile strength	Gewicht pro Meter Weight per meter
	P	d1 max	b1 min	d2 max	L max	Lc max	h2 max	t/T	Qmin	Q0	q
	mm	mm	mm	mm	mm	mm	mm	mm	kN/LB	kN	kg/m
P42	42,01	22,23	25,40	11,10	55,25		28,50	4,8	100,0/22727	110,0	5,36
P42F1	42,01	22,23	25,40	11,10	50,30	54,3	28,50	4,8	90,0/20454	99,0	5,26
P44.45F1	44,45	22,23	24,70	11,10	62,00	65,5	32,00	6,7	110,0/25000	121,0	7,30
P50	50,00	25,40	25,40	14,63	54,30	57,8	40,00	5,0	100,0/22727	110,0	7,50
P50F1	50,00	29,21	30,99	17,81	66,00		42,20	7,0	210,0/47726	231,0	9,68
P50.8F1	50,80	30,00	10,00	11,70	30,20	34,5	26,04	4,0	83,0/18863	91,3	2,60
P63.5	63,50	19,05	18,90	9,53	44,60	47,2	28,60	5,0	86,7/19704	95,4	3,77
P76.2F2	76,20	50,00	26,00	24,00	69,60	74,7	59,50	8,0	350,0/79544	385,0	19,00
P80F1	80,00	42,00	24,00	15,00	55,00	60,0	60,00	6,0	250,0/56817	275,0	11,90
P80F5	80,00	28,00	34,00	16,00	68,00	72,0	45,00	5,0/8,0	190,0/43181	209,0	8,80
P80F6	80,00	30,00	32,00	15,00	58,60	62,6	60,00	5,0	98,0/22272	108,0	9,75
P80F10	80,00	42,00	22,00	15,00	53,00	58,0	60,00	6,0	250,0/56817	275,0	11,40
P101.6F4	101,60	66,70	25,40	26,90	59,20	80,0*	51,00	7,1/5,1	134,0/30454	147,4	15,70
P125F1	125,00	50,00	55,00	26,00	110,00		60,00	8,0	300,0/68181	330,0	13,53
P150.5	150,50	38,12	40,81	16,02	83,50	88,0	44,23	8,5	250,0/56817	275,0	10,00
P152F5	152,40	66,70	25,40	26,90	59,20	80,0*	50,00	7,1/5,1	134,0/30454	147,4	12,10
P152F10	152,40	57,20	37,10	15,90	76,80	87,0	44,50	7,9	190,0/43181	209,0	11,29
P200F10	200,00	100,00	47,00	25,00	103,50		72,00	10,0	308,7/70158	339,6	28,30



Hochleistungsrollenkett
High precision roller chains



Rollenkett für Förderaufgab
Roller chains for conveying purposes



Stauförderketten
Accumulation Chains



Rollenkett aus rostfreiem Stahl
Stainless Steel Roller Chains



Förderketten
Conveyor chains





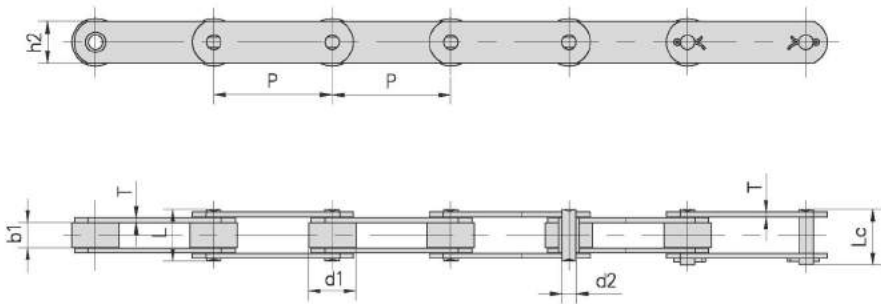
iwis
antriebssysteme
wir bewegen die welt

Tel: +49 2739 86-0 Fax: +49 2739 86-22
sales-wilnsdorf@iwis.com www.iwis.com



Förderketten nach Werksnorm
Conveyor chains according to Industry standard

Kettentyp Chain no.	Teilung Pitch	Rollen Ø Roller diameter	Lichte Weite Width between inner plates	Bolzen Ø Pin diameter	Bolzenlänge Pin length		Laschen- höhe Plate depth	Laschen- dicke Plate thickness	min. Bruchkraft min. tensile strength	Durchschn. Bruchlast Average tensile strength	Gewicht pro Meter Weight per meter
	P	d1 max	b1 min	d2 max	L max	Lc max	h2 max	T max	Q min	Q0	q
	mm	mm	mm	mm	mm	mm	mm	mm	kN/LB	kN	kg/m
M100-P-80	80,0	47,5	31,4	15,9	71,2	76,0	40,0	8,0	100,0/22727	110,0	12,36
M112F2-P-125	125,0	55,0	50,0	16,0	87,1	91,6	40,0	7,2	112,0/25454	123,0	13,35
M160F1-P-100	100,0	36,0	36,0	18,0	76,0	80,0	40,0	7,0	160,0/36364	176,0	9,42
M224F3-P-160	160,0	80,0	30,0	21,0	81,0		60,0	8,0	224,0/50909	246,0	17,34



Hochleistungsrollenkettensysteme
High precision roller chains
antriebssysteme
wir bewegen die welt
Förderketten nach Werksnorm
Conveyor chains according to Industry standard
Stauförderketten
Accumulation Chains
Rollerketten aus rostfreiem Stahl
Stainless Steel Roller Chains
Förderketten
Conveyor chains

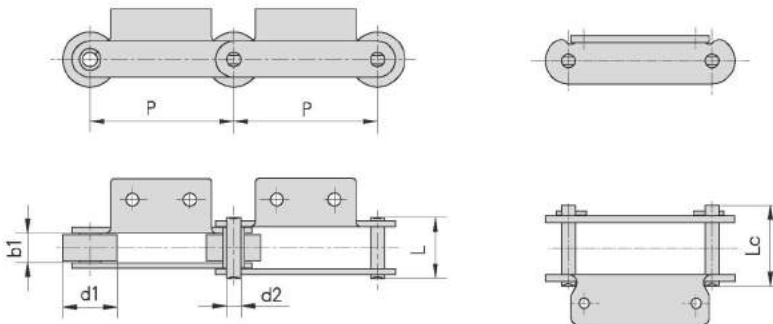

Förderketten mit Anbauteilen nach Werksnorm

Conveyor chains with attachments according to Industry standard

Kettentyp Chain no.	Teilung Pitch	Rollen Ø Roller diameter	Lichte Weite Width between inner plates	Bolzen Ø Pin diameter	Bolzenlänge Pin length		min. Bruchkraft min. tensile strength	Durchschn. Bruchlast Average tensile strength	Gewicht pro Meter Weight per meter
	P	d1 max	b1 min	d2 max	L max	Lc max	Q min	Q0	q
	mm	mm	mm	mm	mm	mm	kN/LB	kN	kg/m
*P28	28,575	11,68	16,00	7,87	32,4		50,0/11364	55,0	2,66
*P28F1	28,575	11,68	16,13	7,87	32,4		50,0/11364	55,0	2,60
P38.1 F2	38,100	22,50	13,00	8,00	29,5	33,3	40,0/9091	44,0	2,42
P42.5	42,500	15,88	15,75	7,92	32,7	36,5	56,7/12886	62,0	3,40
P76.2F1	76,200	31,75	15,00	14,20	44,2		60,0/13636	66,0	4,45
P78.11 F8	78,110	31,80	37,10	15,00	83,5		100,0/22727	110,0	12,05
P80F4	80,000	30,00	15,00	13,90	42,5	46,5	86,0/19545	95,0	3,97
P100F1	100,000	42,00	23,00	9,53	52,0	54,3	86,7/19704	95,0	6,06
P100F2	100,000	36,00	18,00	9,53	47,0	49,3	86,7/19704	95,0	4,60
P100F3	100,000	29,00	30,00	14,50	71,0		95,0/21591	105,0	9,46
P100F4	100,000	40,00	22,00	11,30	53,5		65,0/14773	72,0	5,13
P100F5	100,000	22,20	22,00	11,30	53,5		65,0/14773	72,0	3,90
P100F12	100,000	45,00	37,00	12,00	64,0	67,0	150,0/34091	165,0	10,30
P100F15	100,000	38,00	25,80	10,70	57,0		45,0/10227	50,0	5,25
*P101.6F1	101,600	25,00	55,00	16,00	110,0		60,0/13636	66,0	11,90
P101.6F9	101,600	31,75	15,00	14,20	44,2		66,7/15159	73,0	8,40
MSR4013A2	101,600	22,23	25,20	10,60	57,2		106,7/24250	117,0	4,29
P120	120,000	50,00	28,00	12,00	54,0	58,0	160,0/36363	176,0	8,14

* Buchsenketten: In der Tabelle zeigt d1 den AußenØ der Buchse

* Bushing chain: d1 in the table indicate the external diameter of the bushing



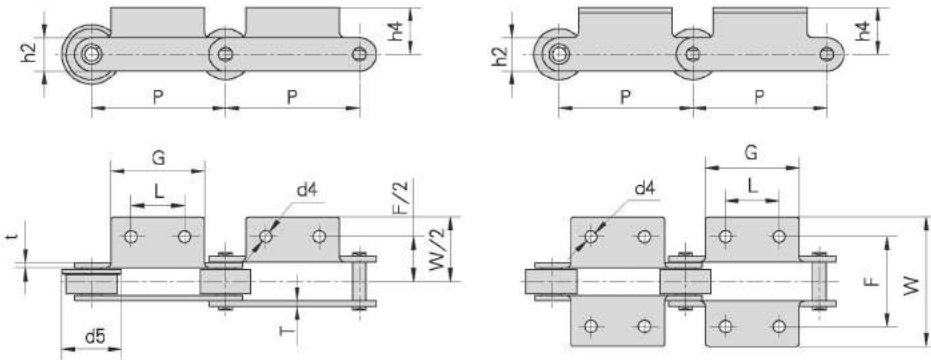


Förderketten mit Anbauteilen nach Werksnorm

Conveyor chains with attachments according to Industry standard

Kettentyp Chain no.	P mm	L mm	G mm	F mm	W mm	h4 mm	h2 mm	d4 mm	t/T mm	d5 mm
*P28	28,575	28,58	51,0	46,74	61,20	13,70	22,23	8,75	3,10	
*P28F1	28,575	28,58	50,8	46,80	61,86	12,70	22,23	9,02	3,10	
P38.1 F2	38,100		28,0	56,00	76,00	17,20	19,00	9,00	3,00	
P42.5	42,500	19,00	38,0	53,50	70,00	19,50	22,00	7,00	3,25	
P76.2F1	76,200	31,00	58,0	75,40	107,00	21,25	29,00	10,50	4,50	
P78.11 F8	78,110	30,00	65,0	120,00	150,00	35,00	38,10	12,00	7,90	
P80F4	80,000	40,00	70,2	57,40	87,40	22,95	27,10	8,50	5,60/4,15	
P100F1	100,000	78,00	96,0	73,00	103,00	17,50	32,00	7,00	5,00	
P100F2	100,000	40,00	70,0	68,00	98,00	17,50	32,00	9,00	5,00	
P100F3	100,000	40,00	70,0	100,00	128,00	28,00	38,10	12,00	6,00	
P100F4	100,000	40,00	65,0	70,00	94,00	22,00	32,00	10,00	4,50	
P100F5	100,000	40,00	65,0	70,00	94,00	22,00	32,00	10,00	4,50	
P100F12	100,000	60,00	90,0	98,00	128,00	34,00	40,00	11,50	5,00	64,0
P100F15	100,000	29,85	65,0	75,00	115,60	20,00	28,00	9,00	4,80	
*P1 01.6F1	101,600	44,00	73,0	136,00	165,00	30,00	40,00	11,00	10,00	
P101.6F9	101,600	31,00	65,0	75,40	107,00	21,25	29,00	10,50	4,50	
MSR4013A2	101,600	30,20	63,5	70,20	109,72	20,60	28,50	8,64	4,80	
P120	120,000	50,00	75,0	82,00	119,60	20,00	40,00	7,00	5,00	59,0

* Buchsenketten: In der Tabelle zeigt d1 den AußenØ der Buchse
* Bushing chain: d1 in the table indicate the external diameter of the bushing



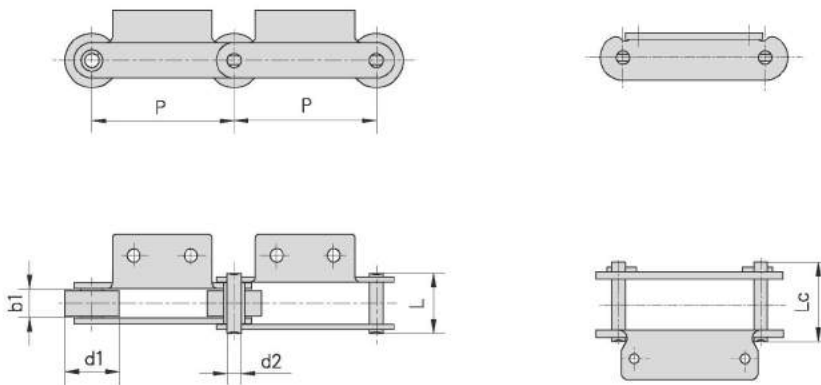
Hochleistungsrollenkettensysteme
High precision roller chains
antriebssysteme
wir bewegen die welt
Förderketten mit Anbauteilen nach Werksnorm
Conveyor chains with attachments according to Industry standard
Stauförderketten
Accumulation Chains
Rollenkettensysteme aus rostfreiem Stahl
Stainless Steel Roller Chains
Förderketten
Conveyor chains


Förderketten mit Anbauteilen nach Werksnorm

Conveyor chains with attachments according to Industry standard

Kettentyp Chain no.	Teilung	Rollen Ø Roller diameter	Lichte Weite Width between innerplates	Bolzen Ø Pin diameter	Bolzenlänge Pin length		min. Bruchkraft min. tensile strength	Durchschn. Bruchlast Average tensile strength	Gewicht pro Meter Weight per meter
	P	d1 max	b1 min	d2 max	L max	Lc max	Q min	Q0	q
	mm	mm	mm	mm	mm	mm	kN/LB	kN	kg/m
P125F2	125,0	32,0	18,5	8,00	39,0		50,0/11364	55,0	2,66
P150F2	150,0	40,0	27,0	11,10	57,0	61,0	124,6/28318	137,0	5,40
P150F4	150,0	50,0	37,0	16,00	77,5	82,5	170,0/38636	187,0	10,90
P150F6	150,0	50,0	30,0	12,00	49,5		86,7/19704	95,0	7,27
RF1015ORA2	150,0	50,8	30,0	14,50	69,0		113,0/25682	124,0	9,20
P152F	152,4	40,1	37,5	19,10	97,5		328,7/74704	378,0	15,88
P152F4	152,4	50,8	30,6	14,27	62,8	67,5	88,0/20000	100,0	9,24
P152F11	152,4	38,0	53,5	14,70	112,4		130,0/29545	143,0	12,6
*P160F1	160,0	36,0	55,0	20,00	108,0		50,0/11364	55,0	14,5
P160F3	160,0	48,0	25,0	14,85	62,5		120,0/27272	132,0	7,10
P160F5	160,0	60,0	33,0	14,27	64,0	72,0	150,0/34091	165,0	8,00
P160F8	160,0	40,0	20,0	11,00	50,0		55,0/12500	61,0	4,58
P185	185,0	50,8	30,6	14,27	62,8	67,5	70,0/15909	77,0	8,42
P200F6	200,0	50,0	37,0	16,00	77,5	82,5	170,0/38636	187,0	9,69
P200F7	200,0	40,0	27,0	11,10	57,0	61,0	124,6/28318	137,0	9,78
P200F8	200,0	65,0	37,0	16,00	86,5		170,0/38636	187,0	15,23

* Buchsenketten: In der Tabelle zeigt d1 den AußenØ der Buchse
 * Bushing chain: d1 in the table indicate the external diameter of the bushing





iwis
antriebssysteme
wir bewegen die welt

Tel: +49 2739 86-0 Fax: +49 2739 86-22
sales-wilnsdorf@iwis.com www.iwis.com

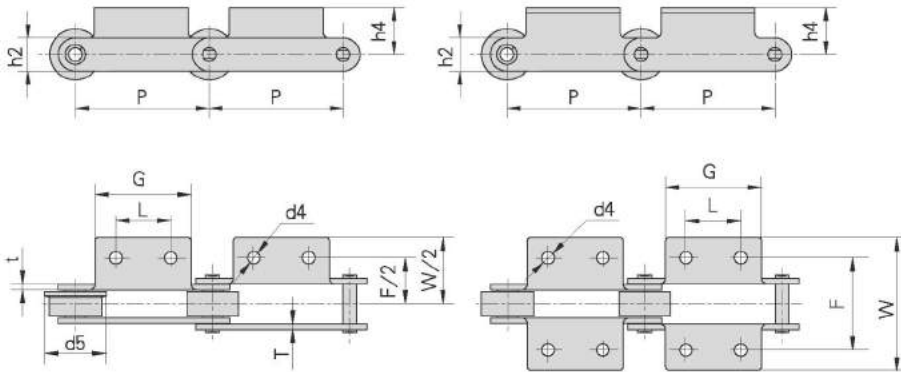


Förderketten mit Anbauteilen nach Werksnorm

Conveyor chains with attachments according to Industry standard

Kettentyp Chain no.	P mm	L mm	G mm	F mm	W mm	h4 mm	h2 mm	d4 mm	t/T mm	d5 mm
P125F2	125,0	46,0	76,0	64,0	90,0	14,0	22,0	10,0	3,0	42,0
P150F2	150,0	60,0	85,0	92,0	117,3	22,5	32,0	10,0	6,0	
P150F4	150,0	60,0	85,0	120,0	150,0	33,0	43,0	14,0	8,0	
P150F6	150,0	50,0	75,0	86,6	126,6	17,5	35,0	9,0x26,0	4,0	59,0
RF10150RA2	150,0	60,0	90,0	100,0	130,0	28,0	38,1	12,0	6,3	
P152F	152,4	60,0	100,0	130,0	202,0	45,0	50,0	15,0	9,0	
P152F4	152,4	60,0	100,0	110,0	140,0	32,0	38,0	15,0	6,0	65,0
P152F11	152,4	44,6	74,8	133,7	168,0	24,0	39,0	10,8	9,6/11,4	
*P160F1	160,0	60,0	110,0	130,0	173,0	40,0	50,0	14,0	9,0	
P160F3	160,0	49,0	70,0	83,0	117,0	32,5	35,0	8,5	6,0	
P160F5	160,0	35,0	70,0	110,0	166,0	38,7	40,0	14,0	5,6	
P160F8	160,0	80,5	133,0	56,0	100,0	16,0	32,0	8,3x13,3	4,5	
P185	185,0	60,0	120,0	110,0	140,0	32,0	38,0	15,0	6,0	65,0
P200F6	200,0	81,5	120,0	120,0	150,0	33,0	43,0	14,0	8,0	
P200F7	200,0	81,5	120,0	92,0	122,0	22,0	32,0	10,0	6,0	
P200F8	200,0	80,0	120,0	200,0	238,0	38,0	43,0	15,0	8,0	80,0

* Buchsenketten: In der Tabelle zeigt d1 den AußenØ der Buchse
* Bushing chain: d1 in the table indicate the external diameter of the bushing



Hochleistungsrollenkettensysteme
High precision roller chains
antriebssysteme
wir bewegen die welt
Förderketten mit Anbauteilen nach Werksnorm
Conveyor chains with attachments according to Industry standard
Stauförderketten
Accumulation Chains
Rollenkettensysteme aus rostfreiem Stahl
Stainless Steel Roller Chains
Förderketten
Conveyor chains

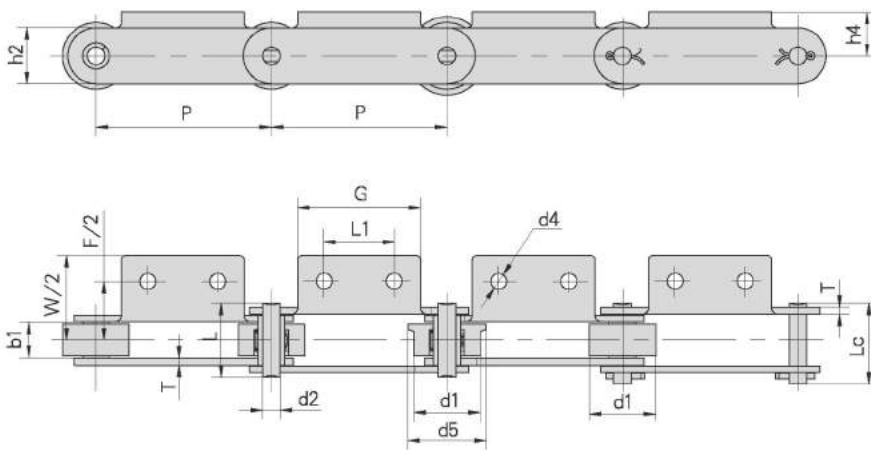


Förderketten mit Anbauteilen nach Werksnorm

Conveyor chains with attachments according to Industry standard

Kettentyp Chain no.	Teilung	Rollen Ø Roller diameter	Lichte Weite Width between inner plates	Bolzen Ø Pin diameter	Bolzenlänge Pin length		min. Bruchkraft min. tensile strength	Durchschn. Bruchlast Average tensile strength	Gewicht pro Meter Weight per meter
	P	d1 max	b1 min	d2 max	L max	Lc max	Q min	Q0	q
	mm	mm	mm	mm	mm	mm	kN/LB	kN	kg/m
M56F4-P-100	100,0	38,0	20,5	10,00	42,3	46,1	56,0/12727	62,0	4,30
M56F7-P-100	100,0	38,0	17,0	10,00	38,8	42,6	56,0/12727	62,0	4,84
M56F9-P-100	100,0	38,0	20,5	10,00	46,3	50,1	88,2/20045	97,0	5,60
P100	100,0	50,0	29,9	13,94	60,0		160,0/36364	176,0	9,27
P160	160,0	50,0	29,9	13,94	60,0		160,0/36364	176,0	7,23
P300	300,0	80,0	45,0	23,81	95,5	103,0	300,0/68181	320,0	24,32
P400F1	400,0	80,0	45,0	23,81	95,5	103,0	300,0/68181	320,0	22,67

Kettentyp Chain no.	L1	G	F	W	h4	h2	d4	T	d5
	mm	mm	mm	mm	mm	mm	mm	mm	mm
M56F4-P-100	40,0	70,0	68,5	98,50	25,0	25,0	9,0	4,0	44,5
M56F7-P-100	40,0	70,0	71,5	92,00	55,0	25,0	6,5	4,0	45,0
M56F9-P-100	40,0	70,0	67,5	96,58	25,0	32,0	9,0	5,0	44,5
P100	40,0	65,0	98,0	128,00	35,0	40,0	10,0	4,0	65,0
P160	85,0	115,0	94,0	124,00	35,0	40,0	10,0	4,0	65,0
P300	200,0	250,0	150,0	190,00	105,0	60,0	13,0	10,0	100,0
P400F1	300,0	350,0	150,0	190,00	105,0	60,0	15,0	10,0	100,0



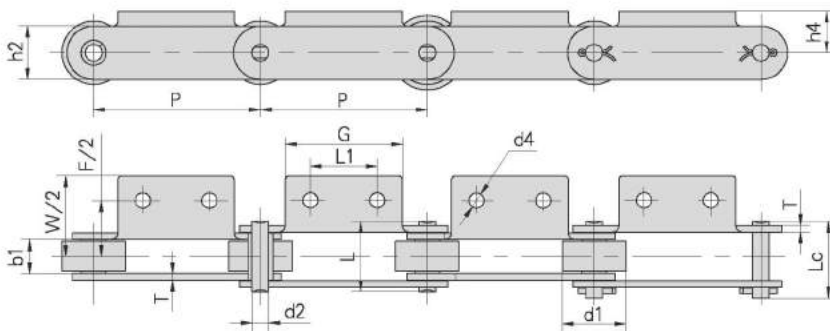


Förderketten mit Anbauteilen nach Werksnorm

Conveyor chains with attachments according to Industry standard

Kettentyp Chain no.	Teilung Pitch	Rollen Ø Roller diameter	Lichte Weite Width between inner plates	Bolzen Ø Pin diameter	Bolzenlänge Pin length		min. Bruchkraft min. tensile strength	Durchschn. Bruchlast Average tensile strength	Gewicht pro Meter Weight per meter
					L max	Lc max			
					P	d1 max			
mm	mm	mm	mm	mm	mm	kN/LB	kN	kg/m	
M40F1-P-125	125,0	36,0	38,0	14,27	75,6		40,0/9091	44,0	10,18
M56F1-P-100	100,0	38,0	20,5	10,00	42,3	46,1	56,0/12727	61,0	4,63
M56F2-P-100	100,0	42,0	22,5	10,00	44,6	48,5	56,0/12727	61,0	5,67
M56F3-P-100	100,0	38,0	20,5	10,00	42,3	46,1	56,0/12727	61,0	4,72
M56F8-P-100	100,0	38,0	17,0	10,00	38,8	42,6	56,0/12727	61,0	3,79
M56A2-P-125	125,0	42,0	24,0	10,00	46,0	49,5	56,0/12727	61,0	5,24
M75-P100	100,0	38,0	18,9	9,53	40,4	44,7	75,0/17045	83,0	4,85
M75-P100F1	100,0	38,0	18,9	9,53	38,4	42,7	75,0/17045	83,0	4,01
M75-P100F3	100,0	28,5	23,9	11,10	46,3	50,3	75,0/17045	83,0	4,53
M75F4-P-100	100,0	38,0	18,9	9,53	40,4	44,7	75,0/17045	83,0	4,62
M160-S-200K2F2	200,0	36,0	36,0	18,00	76,0	80,0	160,0/36364	176,0	11,40
M224F1 K2-P-200	200,0	85,0	42,0	21,00	95,0		224,0/50909	246,0	21,20

Kettentyp Chain no.	P	L1	G	F	W	h4	h2	d4	T
	mm	mm	mm	mm	mm	mm	mm	mm	mm
M40F1-P-125	125,0	50,0	90,0	100,0	140,0	36,0	50,0	13,0	6,0
M56F1-P-100	100,0	40,0	70,0	67,5	96,6	35,0	25,0	9,0	4,0
M56F2-P-100	100,0	29,7	50,0	124,0	148,0	21,5	32,0	7,0	4,0
M56F3-P-100	100,0	50,0	70,0	71,0	101,0	35,0	25,0	9,0	4,0
M56F8-P-100	100,0		70,0	63,8	95,0	25,0	25,0	8,2	4,0
M56A2-P-125	125,0	50,0	75,0	88,0	128,0	30,0	30,0	11,0	4,0
M75-P100	100,0	40,0	70,0	64,0	112,0	24,9	26,0	9,0	4,0
M75-P100F1	100,0	40,0	70,0	64,0	112,0	24,4	26,0	9,0	3,5
M75-P100F3	100,0	50,0	70,0	75,7	96,7	35,0	26,0	9,7	4,0
M75F4-P-100	100,0	40,0	70,0	90,0	112,4	24,9	26,0	8,5	4,0
M160-S-200K2F2	200,0	100,0	180,0	103,0	133,0	45,0	51,0	9,0	7,0
M224F1 K2-P-200	200,0	80,0	120,0	128,0	168,0	40,0	50,0	14,0	9,0

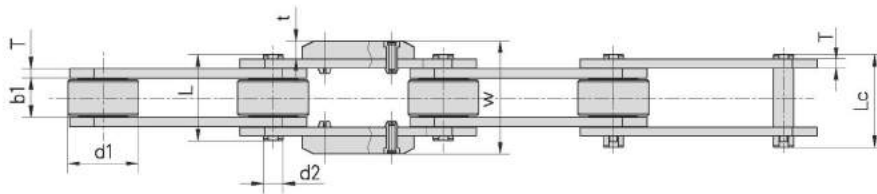
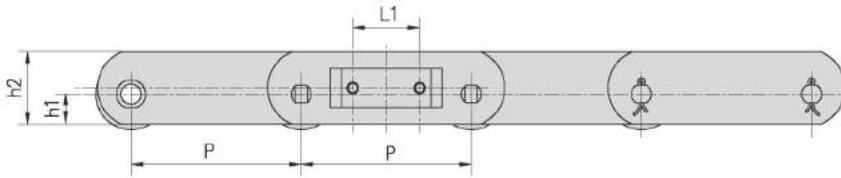


Hocheistungsrollenketten
High precision roller chains
 Rollenketten für Förderaufgaben
Roller chains for conveying purposes
 Stauförderketten
Accumulation Chains
 Rollenketten aus rostfreiem Stahl
Stainless Steel Roller Chains
 Förderketten
Conveyor chains


Tragförderkette mit beidseitigen Führungsblöcken

Deep link conveyor chains with side guides

Kettentyp Chain no.	Teilung Pitch	Rollen Ø Roller diameter	Lichte Weite Width between inner plates	Bolzen Ø Pin diameter	Bolzenlänge Pin length		Laschenhöhe Plate depth		Laschendicke Plate thickness	min. Bruchkraft min. tensile strength
	P	d1 max	b1 min	d2 max	L max	Lc max	h1 max	h2 max	T max	Q min
	mm	mm	mm	mm	mm	mm	mm	mm	mm	kN/LB
P152F13	152,4	63,4	35,0	18,0	77,0	83,0	26,9	65,0	8,0	160,0/36364



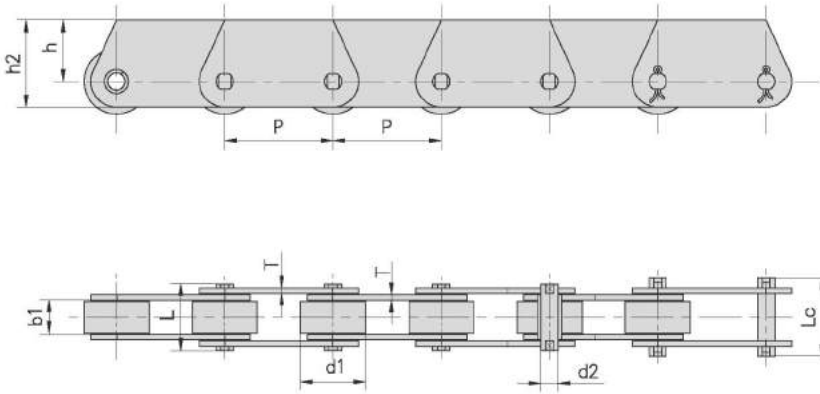
Kettentyp Chain no.	P	L1	W	t
	mm	mm	mm	mm
P152F13	152,4	60,0	101,0	16,0





Tragförderketten mit Sonderlaschen
Deep link conveyor chains with special link plates

Kettentyp Chain no.	Teilung Pitch	Rollen Ø Roller diameter	Lichte Weite Width between inner plates	Bolzen Ø Pin diameter	Bolzenlänge Pin length		Laschenhöhe Plate depth		Laschendicke Plate thickness	min. Bruchkraft min. tensile strength	Gewicht pro Meter Weight per meter
					L max	Lc max	h max	h2 max			
					P	d1 max	b1 min	d2 max			
P31,75F1	31,75	19,05	9,8	5,08	19,2	22,5	18,0	25,5	1,6	20,0/4545	1,48
P101.6F10	101,60	50,00	30,0	14,27	64,0	68,5	30,0	50,0	6,4	180,0/40909	11,56
P160F2	160,00	60,00	38,0	20,00	80,0		36,0	60,0	6,0	190,0/43181	12,57



Hochleistungsrollenkettensysteme
High precision roller chains

Rollenketten für Förderaufgaben
Roller chains for conveying purposes

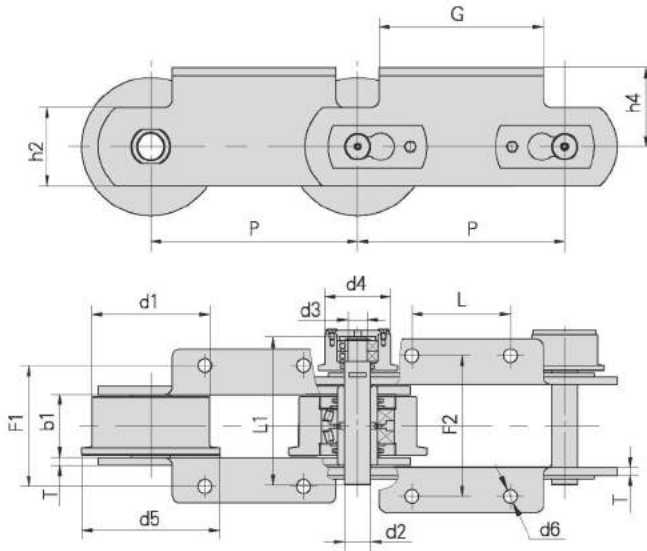
Stauförderketten
Accumulation Chains

Rollenketten aus rostfreiem Stahl
Stainless Steel Roller Chains

Förderketten
Conveyor chains


Förderketten mit Anbauteilen
 Conveyor chains with attachments

Kettentyp Chain no.	Teilung Pitch	Rollen Ø Roller diameter			Lichte Weite Width between inner plates	Bolzen Ø Pin diameter			Bolzenlänge Pin length	min. Bruchkraft min. tensile strength
		d1 max	d4 max	d5 max		d2 max	d3 max	L1 max		
		mm	mm	mm		mm	mm	mm		
P315	315	180,0	100,0	210,0	90,0	40,0	30,0	217,0	100,0/22727	



Kettentyp Chain no.	P	L	G	F1	F2	h4	h2	d6	T
	mm	mm	mm	mm	mm	mm	mm	mm	mm
P315	315	150,0	250,0	180,0	206,0	120,0	120,0	21,0	12,0





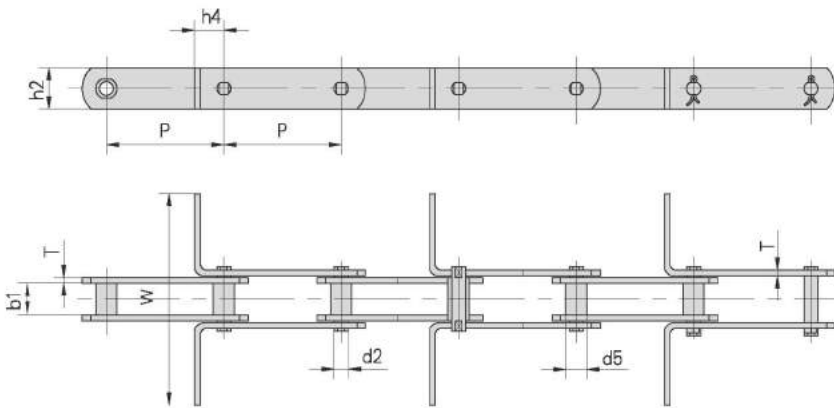
Tel: +49 2739 86-0 Fax: +49 2739 86-22
sales-wilnsdorf@iwis.com www.iwis.com



Kratzer-Ketten nach DIN 8167 und DIN 8165 (M + FV Serie)
Scraper conveyor chains according to DIN 8167 and DIN 8165 (M + FV series)

Kettentyp Chain no.	P			b1 min	d2 max	d5 max	h4	h2 max	T max	W	Q min
	mm	mm	mm	mm	mm	mm	mm	mm	mm	mm	kN/LB
MR56	100	125		24,0	10,0	15,0	20,0	30,0	4,0	•	56,0/12727
MR80	100	125	160	28,0	12,0	18,0	25,0	35,0	5,0	•	80,0/18182
MR112	100	125	160	32,0	15,0	21,0	35,0	40,0	6,0	•	112,0/25454
MR160	100	125	160	37,0	18,0	25,0	40,0	50,0	7,0	•	160,0/36364
MR224	125	160	200	43,0	21,0	30,0	44,0	60,0	8,0	•	224,0/50909
MR315	160	200	250	48,0	25,0	36,0	50,0	70,0	10,0	•	315,0/71591
FVR40	80	100	125	18,0	10,0	15,0	20,0	25,0	3,0	•	42,0/9545
FVR63	100	125	160	22,0	12,0	18,0	25,0	30,0	4,0	•	64,0/14545
FVR90	100	125	160	25,0	14,0	20,0	30,0	35,0	5,0	•	100,0/22727
FVR112	100	125	160	30,0	16,0	22,0	35,0	40,0	6,0	•	120,0/27272
FVR140	125	160	200	35,0	18,0	26,0	38,0	45,0	6,0	•	145,0/32954
FVR180	125	160	200	45,0	20,0	30,0	44,0	50,0	8,0	•	190,0/43181
FVR250	160	200	250	55,0	26,0	36,0	50,0	60,0	8,0	•	275,0/62499

• W - Abmessungen auf Anfrage
W - Dimensions are available upon request



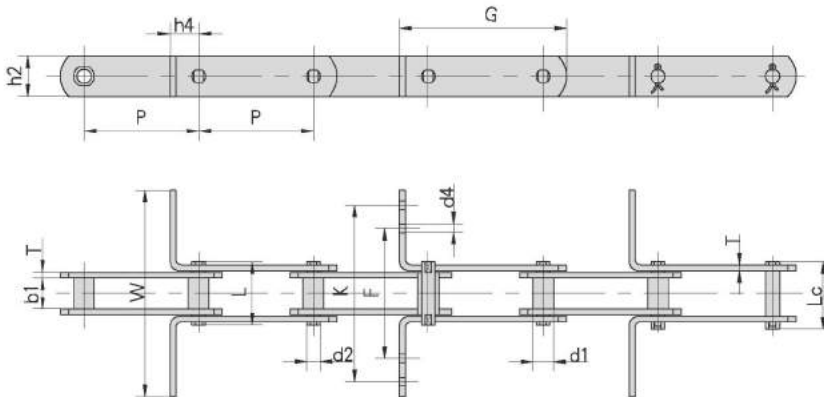
Hochleistungsrollenkettensysteme
High precision roller chains
antriebssysteme
wir bewegen die welt
ELITE
Kratzer-Ketten nach DIN 8167 und DIN 8165 (M + FV Serie)
Scraper conveyor chains according to DIN 8167 and DIN 8165 (M + FV series)
Kettentyp
Chain no.
P
b1 min
d2 max
d5 max
h4
h2 max
T max
W
Q min
kN/LB
MR56
MR80
MR112
MR160
MR224
MR315
FVR40
FVR63
FVR90
FVR112
FVR140
FVR180
FVR250
W - Abmessungen auf Anfrage
W - Dimensions are available upon request
h4
h2
P
T
b1
W
d2
d5
Stauförderketten
Accumulation Chains
ELITE
Rollenkettensysteme aus rostfreiem Stahl
Stainless Steel Roller Chains
ELITE
Förderketten
Conveyor chains
ELITE


Kratzer-Ketten nach Werksnorm

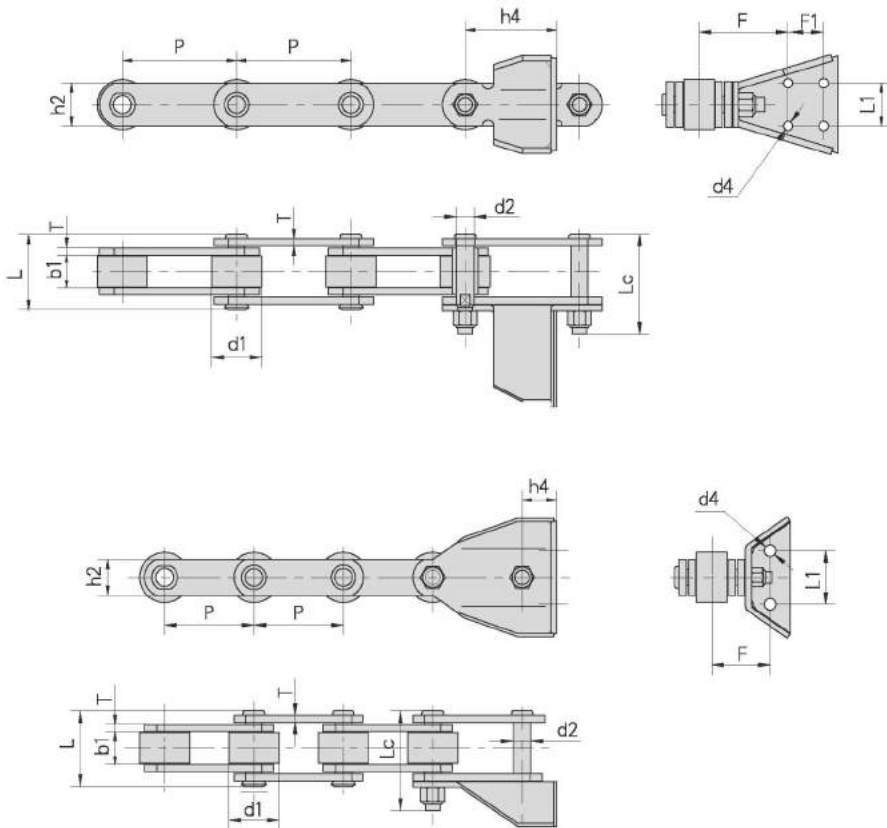
Scraper conveyor chains according to industry standard

Kettentyp Chain no.	Teilung Pitch	Buchsen Ø Bush diameter	Lichte Weite Width between inner plates	Bolzen Ø Pin diameter	Bolzenlänge Pin length		min. Bruchkraft min. tensile strength	Durchschn. Bruchlast Average tensile strength	Gewicht pro Meter Weight per meter
	P	d1 max	b1 min	d2 max	L max	Lc max	Q min	Qo	q
	mm	mm	mm	mm	mm	mm	kN/LB	kN	kg/m
M80-P100F1	100,0	18,0	28,00	12,00	55,0	58,5	80,0/18162	88,0	5,19
M180-P-100	100,0	26,0	28,85	18,00	62,5		180,0/40909	198,0	10,25
M310-P-125	125,0	40,0*	52,00	20,00	103,4	109,4	303,8/69045	334,0	19,88
M310F1-P-125	125,0	40,0*	52,00	20,00	103,4	109,4	303,8/69045	334,0	24,88
P100F16	100,0	23,0	28,00	16,00	66,0		115,0/26136	127,0	6,60
P101.6	101,6	44,5	50,80	23,84	136,5		600,0/136362	660,0	34,96
P125F3	125,0	25,0	36,00	18,00	82,0		220,0/49999	242,0	11,17
P125F4	125,0	25,0	36,00	18,00	82,0		220,0/49999	242,0	9,83

Kettentyp Chain no.	G	F	W	K	h4	h2	d4	T
	mm	mm	mm	mm	mm	mm	mm	mm
M80-P100F1	145,5		180,0		25,0	35,0		5,0
M180-P-100	163,0		185,0		35,0	50,0		6,0
M310-P-125	195,0		270,0		35,0	55,0		10,0
M310F1-P-125	195,0		560,0		35,0	55,0		10,0
P100F16	143,0	91,8	180,0	159,8	25,0	36,0	6,5	6,0
P101.6	198,6		206,5		62,0	60,0		14,5
P125F3	190,0	139,5	290,0	259,5	35,0	51,0	8,5	6,0
P125F4	190,0	119,5	220,0	191,5	35,0	51,0	8,5	6,0

 * Außendurchmesser auf Anfrage
 Dimension of roller diameter upon request


Kettentyp Chain no.	Teilung Pitch	Rollen Ø Roller diameter	Lichte Weite Width between inner plates	Bolzen Ø Pin diameter		Bolzenlänge Pin length	Laschenhöhe Plate depth	Laschendicke Plate thickness	min. Bruchkraft min. tensile strength
	P	d1 max	b1 min	d2 max	L max	Lc max	h2 max	T max	Qmin
	mm	mm	mm	mm	mm	mm	mm	mm	kN/LB
P125F6	125,0	70,0	45,0	20,0	90,0	122,0	50,0	8,0	250/56818
P160F7	160,0	70,0	45,0	25,0	99,0	136,0	60,0	10,0	400/90908

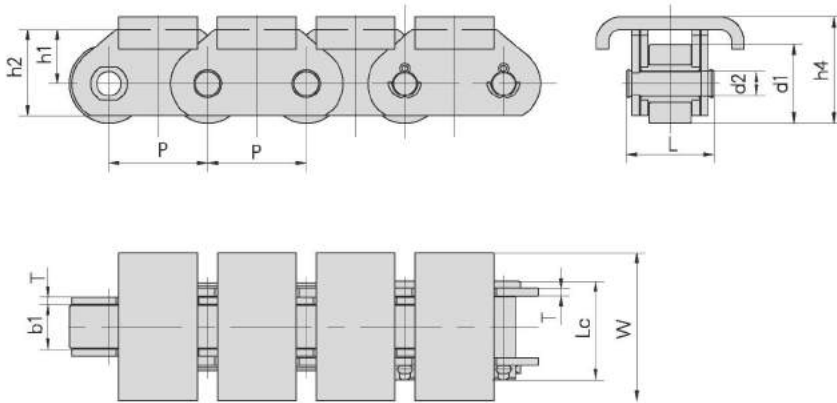


Kettentyp Chain no.	P	L1	F	d4	h4	F1
	mm	mm	mm	mm	mm	mm
P125F6	125,0	75,0	77,5	16,5	44,0	
P160F7	160,0	60,0	119,5	13,0	130,0	50,0


Förderketten mit Sonderbauteilen

Conveyor chains with special attachments

Kettentyp Chain no.	Teilung	Rollen Ø Roller diameter	Lichte Weite Width between inner plates	Bolzen Ø Pin diameter	Bolzenlänge Pin length		Laschenhöhe Plate depth		Laschendicke Plate thickness	min. Bruchkraft min. tensile strength	Gewicht pro Meter Weight per meter
	P	d1 max	b1 min	d2 max	L max	Lc max	h1 max	h2 max	T max	Q min	q
	mm	mm	mm	mm	mm	mm	mm	mm	mm	kN/LB	kg/m
P40F3	40,0	32,0	18,0	10,0	36,1	40,2	22,0	35,0	3,0	40,0/9091	7,27



Kettentyp Chain no.	P	W	h4
	mm	mm	mm
P40F3	40,0	60,0	43,0





iwis
antriebssysteme
wir bewegen die welt

Tel: +49 2739 86-0 Fax: +49 2739 86-22
sales-wilnsdorf@iwis.com www.iwis.com

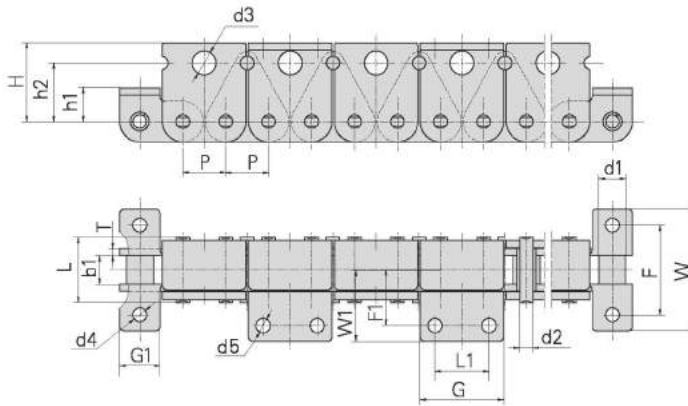


Rollenkette für die Papierindustrie

Conveyor chain for the paper industry

Kettentyp Chain no.	Teilung Pitch	Rollen Ø Roller diameter	Lichte Weite Width between inner plates	Bolzen Ø Pin diameter	Bolzenlänge Pin length	min. Bruchkraft min. tensile strength	Gewicht pro Meter Weight per meter
	P	d1 max	b1 min	d2 mm	L max	Q min	q
	mm	mm	mm	mm	mm	kN/LB	kg/m
12AH-TB35	19,05	11,91	12,57	5,94	29,2	31,8/7227	4,35

Kettentyp Chain no.	H	h2	d3	F	W	G1	h1	d4	T	F1	W1	L1	G	d5
	mm	mm	mm	mm	mm	mm	mm	mm	mm	mm	mm	mm	mm	mm
12AH-TB35	35,0	26,0	10,5	40,0	54,0	18,0	15,0	6,2	3,25	24,8	31,8	24,0	37,0	6,2



Hochleistungsrollenkettensysteme
High precision roller chains

Rollenkettensysteme für Förderaufgaben
Roller chains for conveying purposes

Stauförderketten
Accumulation Chains

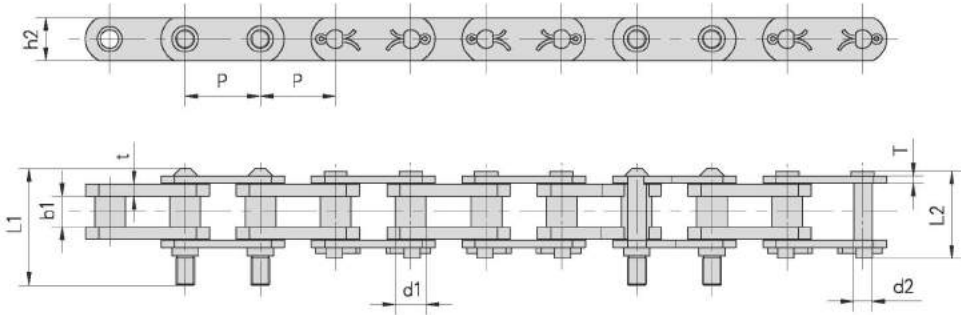
Rollenkettensysteme aus rostfreiem Stahl
Stainless Steel Roller Chains

Förderketten
Conveyor chains

Tel: +49 2739 86-0 Fax: +49 2739 86-22
sales-wilnsdorf@iwis.com www.iwis.com
iwis
 antriebssysteme
 wir bewegen die welt

Grabenziehketten
 Dig chains

Kettentyp Chain no.	Teilung Pitch	Buchsen Ø Bush diameter	Lichte Weite Width between inner plates	Bolzen Ø Pin diameter	Bolzenlänge Pin length		Laschenhöhe Plate depth	Laschendicke Plate thickness	min. Bruchkraft min. tensile strength	Durchschn. Bruchlast Average tensile strength	Gewicht pro Meter Weight per meter
	P	d1 max	b1 min	d2 max	L1 max	L2 max	h2 max	t/Tmax	Q min	Q ₀ min	q
	mm	mm	mm	mm	mm	mm	mm	mm	kN/LB	kN	kg/m
78PF1	78,1	31,75	31,75	19,05	122,0	90,5	44,5	12,7/8,0	140,0/31818	166,88	14,22


 Hochleistungsrollenketten
 High precision roller chains

 Rollenketten für Förderaufgaben
 Roller chains for conveying purposes

 Stauförderketten
 Accumulation Chains

 Rollenketten aus rostfreiem Stahl
 Stainless Steel Roller Chains

 Förderketten
 Conveyor chains



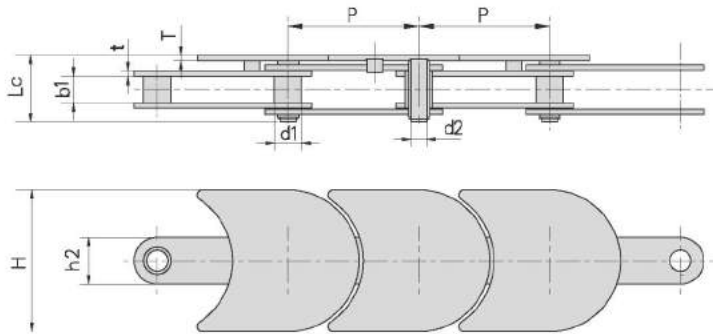

iwis
antriebssysteme
wir bewegen die welt

Tel: +49 2739 86-0 Fax: +49 2739 86-22
sales-wilnsdorf@iwis.com www.iwis.com



Plattenbandketten
Plate conveyor chains

Kettentyp Chain no.	Teilung Pitch	Rollen Ø Roller diameter	Lichte Weite Width between inner plates	Bolzen- abmessungen Pin dimension		Laschenabmessungen Plate dimension		Abmessungen Anbauteile Attachment dimension		min. Bruchkraft min. tensile strength	Gewicht pro Meter Weight per meter
	P	d1 max	b1 min	d2 max	Lc max	h2 max	t	H	T	Qmin	q
	mm	mm	mm	mm	mm	mm	mm	mm	mm	kN/LB	kg/m
HMK 38-50	38,1	12,07	11,68	4,45	27,3	15,0	1,6	50,0	3,0	25,0/-	1,94
HMK 76-82	76,2	15,92	15,7	9,2	37,5	27,3	3,0	82,6	3,0	45,0/10227	2,76
HMK 76-114	76,2	15,92	15,7	9,2	37,5	27,3	3,0	114	3,0	45,0/10227	3,5



Hochleistungsrollenkettensysteme
High precision roller chains
Rollenketten für Förderaufgaben
Roller chains for conveying purposes
Stauförderketten
Accumulation Chains
Rollenketten aus rostfreiem Stahl
Stainless Steel Roller Chains
Förderketten
Conveyor chains


Laschenketten, Ziehbankketten „Gallketten“

Multiple plates bearing pin chains „Gall chains“

Kettentyp Chain no.	Teilung Pitch	Lichte Weite Width between inner plates	Laschen- kombination Plate Lacing	Bolzen \varnothing Pin diameter		Bolzenlänge Pin length	Laschenhöhe Plate depth	Laschendicke Plate thickness	min. Bruchkraft min. tensile strength	Gewicht pro Meter Weight per meter
	P	b1 min		d1 max	d2 max	L max	h2 max	T max	Q min	q
	mm	mm		mm	mm	mm	mm	mm	kN/LB	kg/m
MP15	15	12	2 X 2	5	4	25	12	2,03	5,0/1125	0,7
MP20	20	15	2 X 2	8	6	28	15	2,03	12,5/2818	1,1
MP25	25	18	2 X 2	10	8	36	18	3	25,0/5624	1,8
MP30	30	20	4 X 4	11	9	51	20	3	40,0/8999	3,4
MP35	35	22	4 X 4	12	10	53	26	3	60,0/13498	4,5
MP40	40	25	4 X 4	14	12	58	32	3	80,0/17998	5,0
MP45	45	30	4 X 4	17	14	63	35	3	100,0/22497	7,0
MP50	50	35	4 X 4	22	18	90	40	4,5	150,0/33746	11,3
MP55	55	40	4 X 4	24	21	108	42	6,0	200,0/44994	14,5
MP60	60	45	4 X 4	26	23	114	46	6,0	250,0/56243	17,1
MP70	70	50	6 X 6	32	28	148	55	6,0	375,0/84364	34,0
MP80	80	60	6 X 6	36	32	159	60	6,0	500,0/112486	39,0
MP90	90	70	6 X 6	40	36	184	70	7,0	750,0/168728	53,0
MP100	100	80	8 X 8	45	40	224	80	7,0	1000,0/224972	77,0
MP110	110	90	8 X 8	50	45	236	90	7,0	1250,0/281215	90,0
MP120	120	100	8 X 8	55	50	262	100	8,0	1500,0/337458	112,0

