

Modular Sorter

EXECUTIVE SUMMARY

The modular sorter was designed for high throughput of small packages in formats ranging from small poly-bags to 75lb totes. It features high rate transfers, pivot wheel diverts, and belted roller bed direct current transport conveyor providing bi-directional sortation of up to 90 cases per minute. The modular, all-electric nature of this sorter allows a minimum length of 6ft with an unlimited maximum length.

OVERVIEW

- Provides medium rate sortation of products
- Turnkey package with low installation and implementation cost
- No air required for operation
- Driven by 48V DC brushless servo motors
- Offers 30° diverts and 90° bi-directional diverts
- Modular design for highly customizable sortation
- “Plug-and-play” electrical harness for fast and easy field installation
- Sorts up to 5,400 cases per hour
- Single belt encoder coupled with update photoeyes for simple and effective product tracking

SORTER LENGTH
6' – Unlimited

NUMBERS OF DIVERTS
2+

RATE
Up to 5,400 CPH

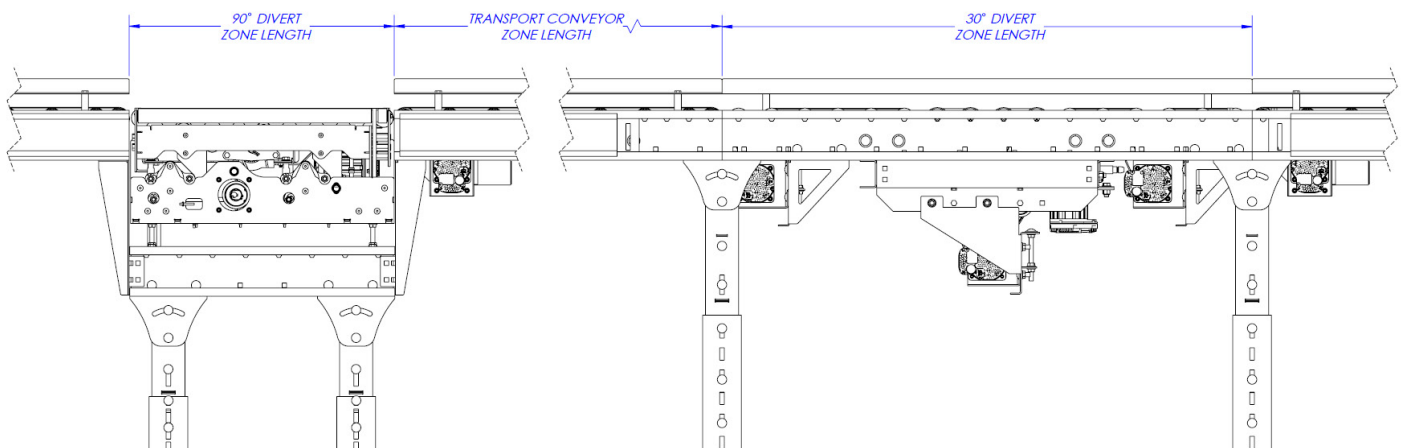
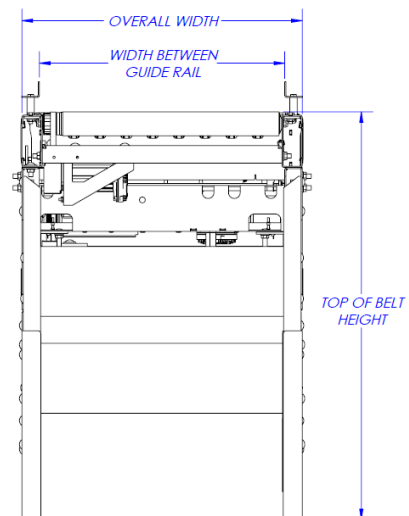
| | | |
|--|-----------------------------|------------------|
| Standard Conveyor Overall Width | | 18" 24" |
| Guide Rail Width | 14.5" 20.5" | |
| Belt Width | 12.5" 18.5" | |
| Sorter Length | 6' – Unlimited | |
| Number of Diverts | Two – Unlimited | |
| Motor | 48V DC Servo Motors | |
| 90° Divert Speeds | Up to 250 feet per minute | |
| 30° Divert Speeds | Up to 300 feet per minute | |
| 90° Divert Zone Length | 24" | |
| 30° Divert Zone Length | 48" | |
| Transport Conveyor Lengths | OAW – 120" in 6" increments | |
| 90° Divert Roller Centers | 2-1/4" | |
| 30° Divert Roller Centers | 3" | |
| Rate | Up to 5,400 cases per hour | |
| Product Load Capacity | 75lb at all speeds | |

APPLICATIONS

- Energy-efficient sortation of wide variety of product
- Ideal for medium-rate sortation onto spurs, straight conveyor, downlanes, etc.

ADDITIONAL EQUIPMENT

- Floor Supports
- Guide Rails
- Controls and Integration
- Spurs
- Straight Conveyor



Warranty: One Year (Please see our warranty for further details)

All information and calculations in the General Guidelines table are based on typical applications.

Please contact Bastian Solutions for other lengths, widths, and configurations.

For solutions larger than 24" overall width, contact Bastian Solutions Conveyor Sales.