



empower® integrations

DAM – SharePoint – PIM –
other extensions

Integrate empower[®] with your existing applications

Uniform content management

With empower[®] Integrations you can integrate all your existing content management applications like DAM, PIM and SharePoint with empower[®]. Also individual extensions can be developed according to your wishes. All applications are intelligently linked to a uniform empower[®] platform.



01

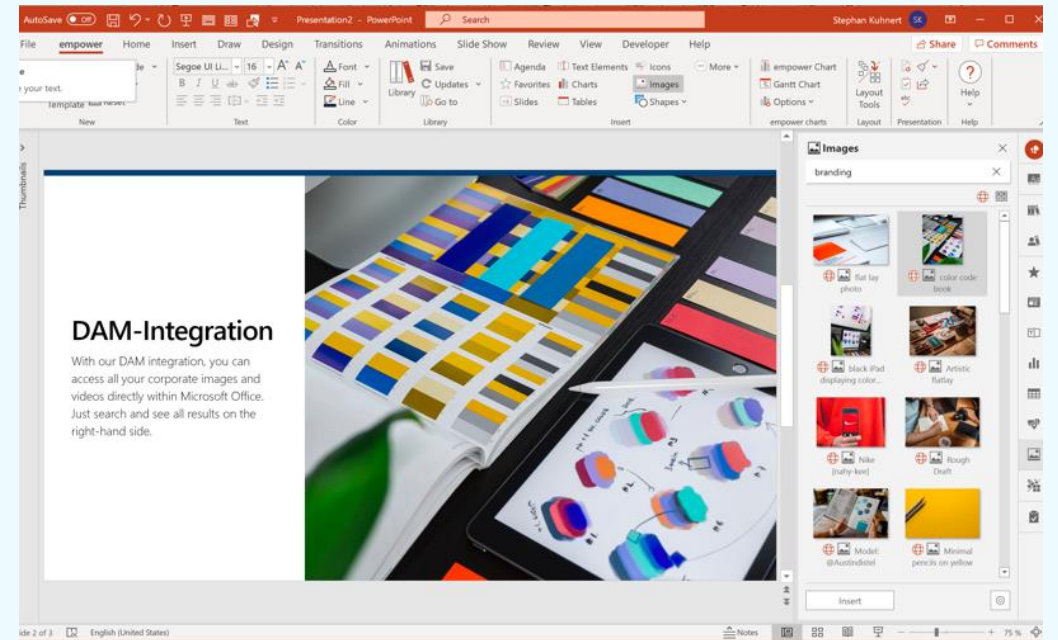
DAM Integration



Introduction

With the integration of images from your DAM system, your users have access to all images directly in MS Office via empower® and can insert them into your Office documents with just one click.

If desired, update messages and license expiration dates can also be considered.



We integrate all known DAM systems



Adobe
Experience
Manager

aprimo™

bynder

Wrike



ASSETBANK

Canto

Cloudinary



4ALLPORTAL

mediavalet



BrandMaker

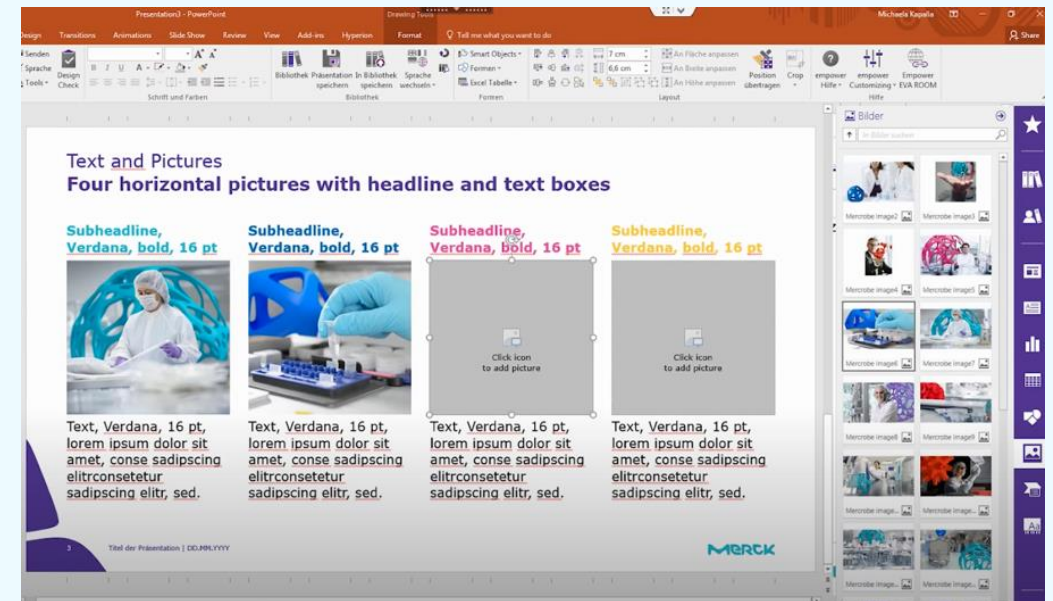
Brandfolder

and many more
upon request

Success Story: Merck



Merck KGaA has introduced empower[®] company-wide as part of a revolutionary corporate design relaunch. In the process, all images from the Adobe Experience Manager was integrated via an interface so that users could click on the image placeholders directly in PowerPoint and empower[®] displayed the images from the Adobe DAM on the right sidebar.



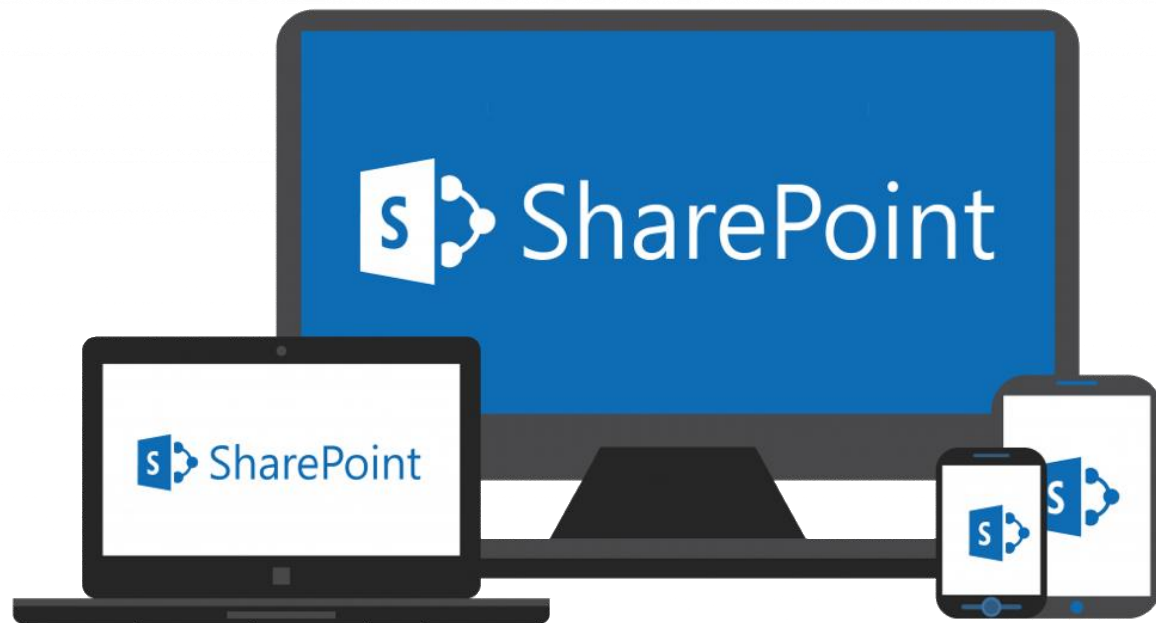
“The introduction of empower[®] was one of the best decisions we made within the branding project.”

Brigitte Schneider,
Associate Director Brand Design, Merck
KGaA

02

SharePoint integration

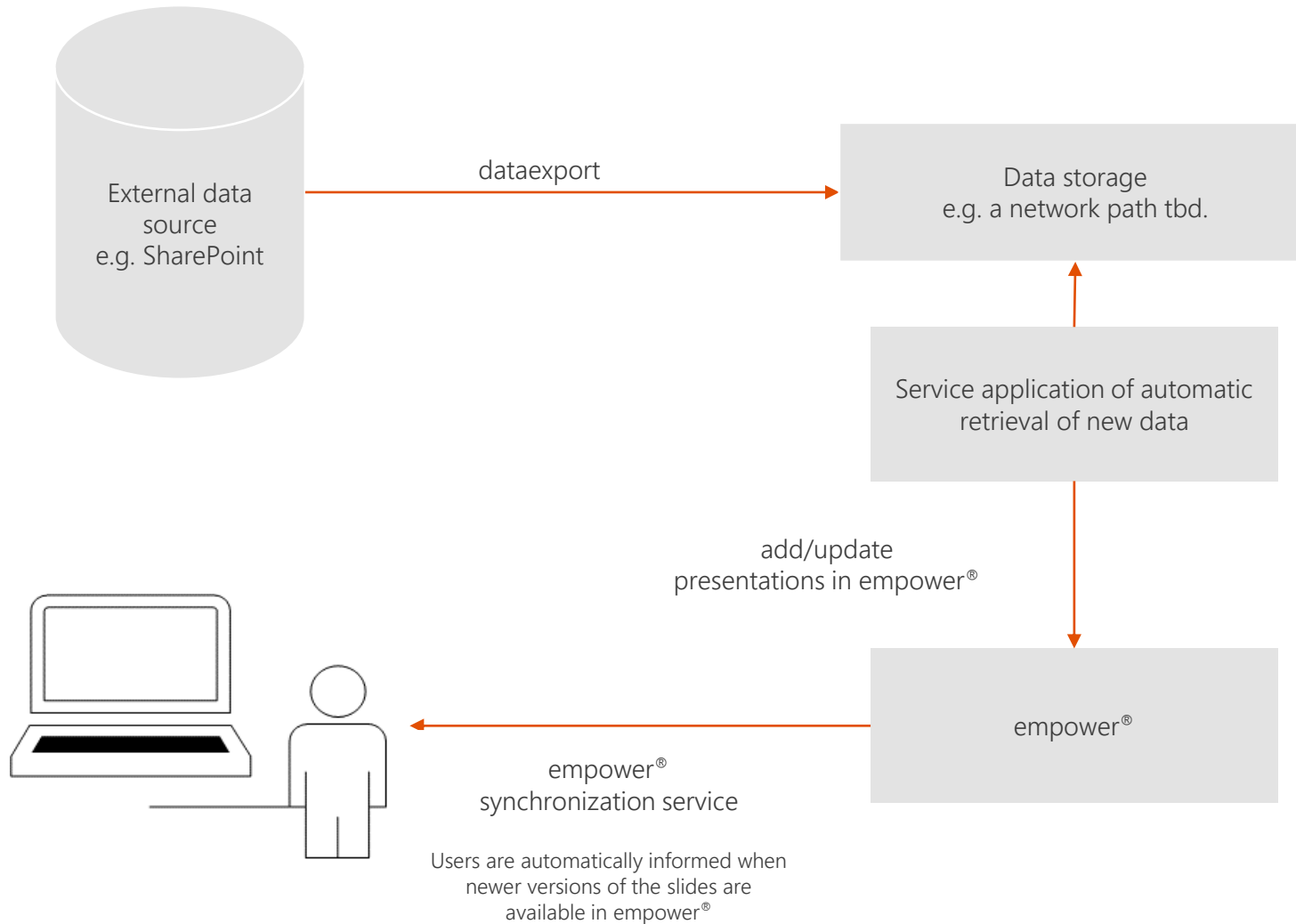




More than one data source

Often there is already a large collection of PowerPoint slides before empower[®] is introduced. SharePoint is a very popular storage location and often used further on if necessary. All this is no problem, because thanks to a synchronization service the data storage can be kept synchronous between different sources (such as SharePoint) and the empower[®] Library.

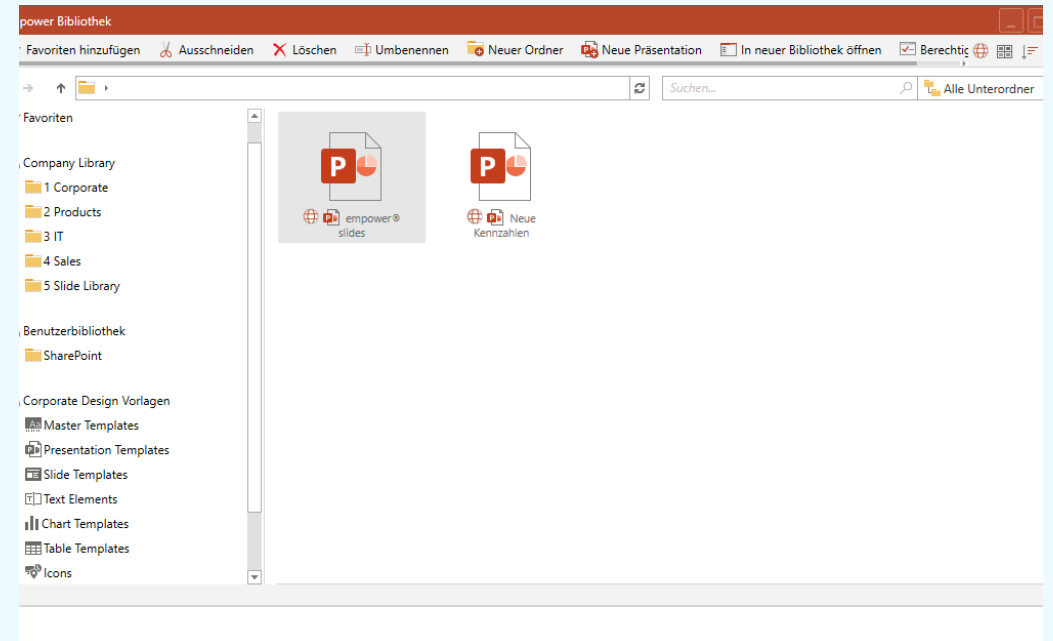
How it works – an example



Success Story: Union Investment



Union Investment had already maintained a considerable number of PowerPoint slides in SharePoint before the introduction of empower®. Thanks to our synchronization service it is now possible to use content from SharePoint in empower® as well. The updates are fully automatic, without having to interrupt the actual work in PowerPoint.



03

PIM integration



Introduction

With empower® you can automatically create product slides for the products in your PIM system.

empower® is informed about changes in the PIM system and automatically creates or updates product slides and makes them available in the empower® Library – also available offline and with update messages.





How PIM integration works

Typical process of an automatic slide creation:

In the PIM system a new product is created, and an existing product is updated.

Once a night an empower[®] service runs and generates new PowerPoint slides for all new products and all updated products. These slides have a uniform structure, which can be configured centrally by you. Thus, even multi-page slides with pictures, videos and tables can be created per product.

These automatically created slides are then immediately saved or updated in the empower[®] Library.

The next morning all users have access to the latest product information in PowerPoint via the empower[®] Library.

If a user opens an outdated slide in an existing presentation, empower[®] automatically offers to update the slide.

We integrate all known PIM systems

StiboSystems

contentserv
FUTURIZE EXPERIENCES

EnterWorks®

 **inRiver**

 Informatica


SALSIFY

 **AGILITY**
MultiChannel
BY MAGNITUDE

 **riversand™**

SAP®

IBM

 **xmedia**

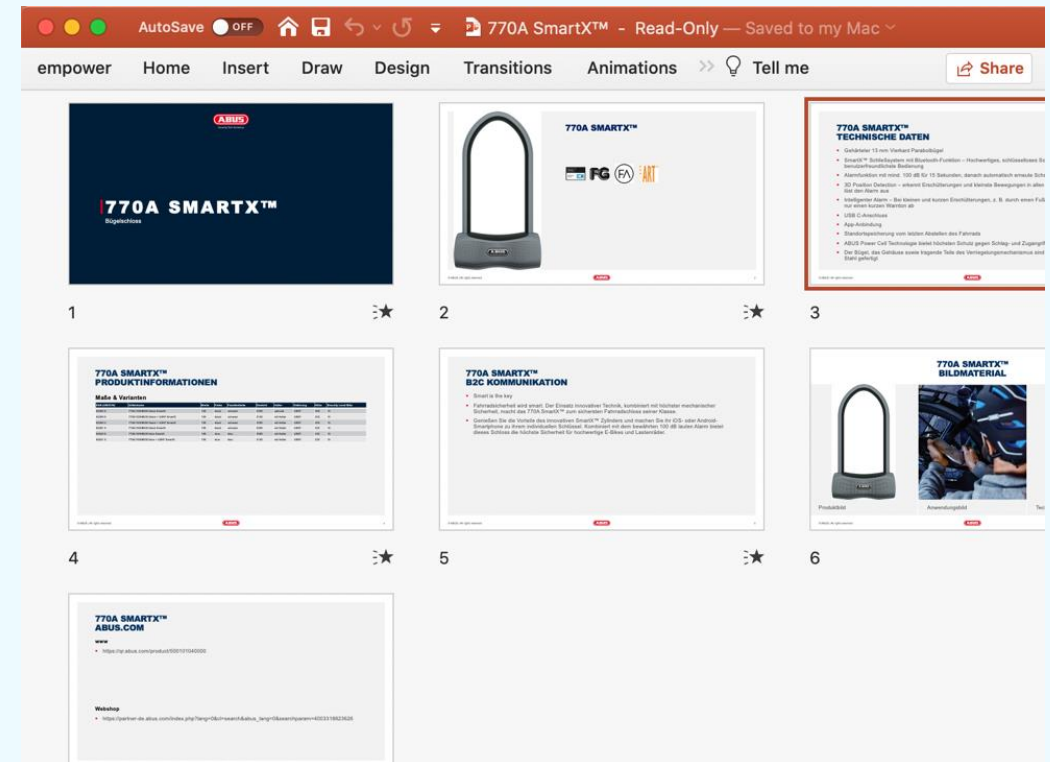
and many more
upon request

Success Story: ABUS



ABUS uses the PIM Informatica to manage its 700 products. With empower[®], ABUS provides field staff and trainers with all product documents as PowerPoint presentations on their laptops and iPads, always up-to-date and offline.

Thanks to PIM integration, product changes are automatically updated in the PowerPoint documents and synchronized everywhere.

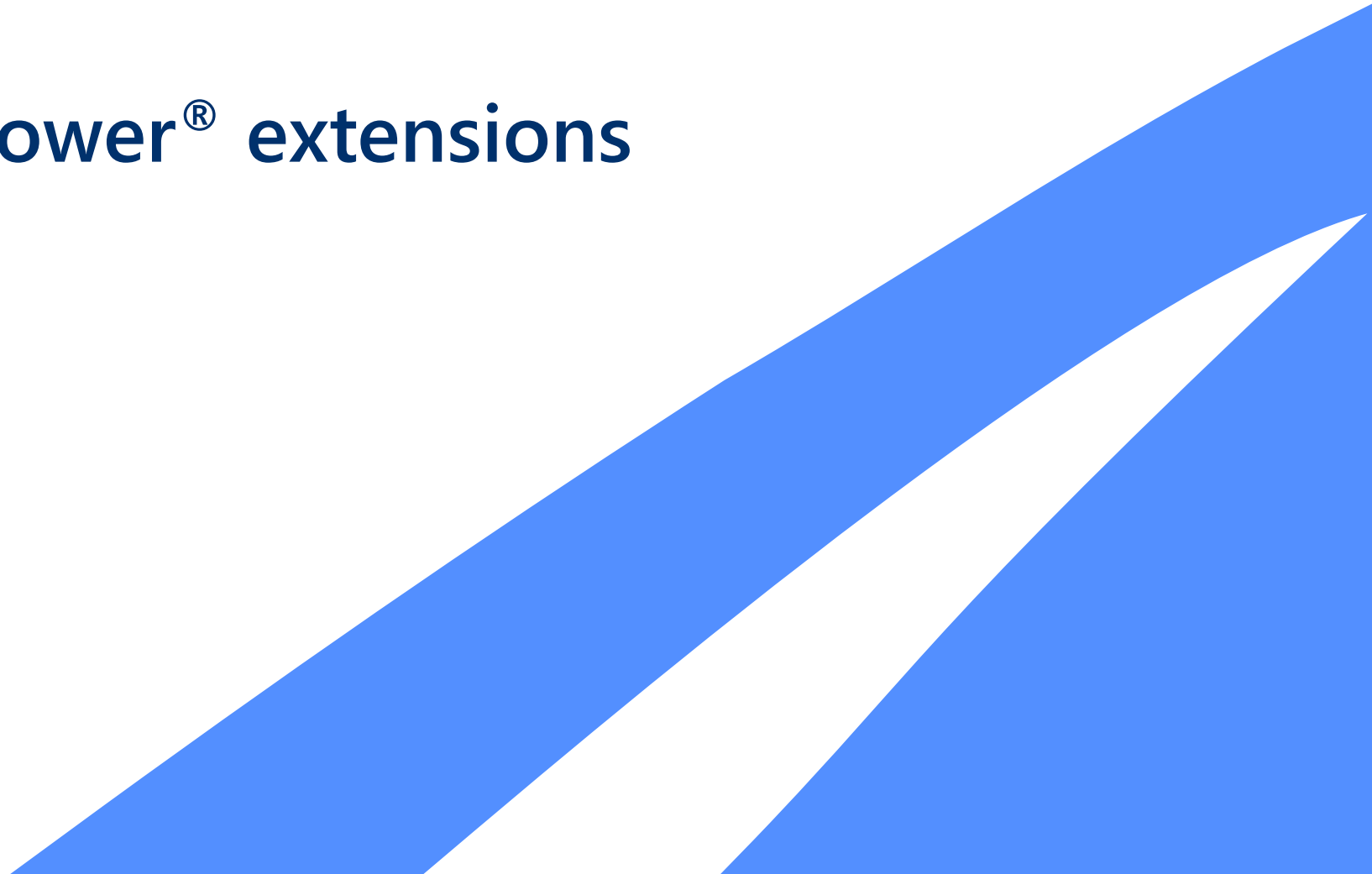


“With the empower[®]-PIM-interface we could almost completely avoid the enormous manual effort to create and update the numerous product presentations.”

Torsten Mühlhoff,
ABUS Corporate Projects

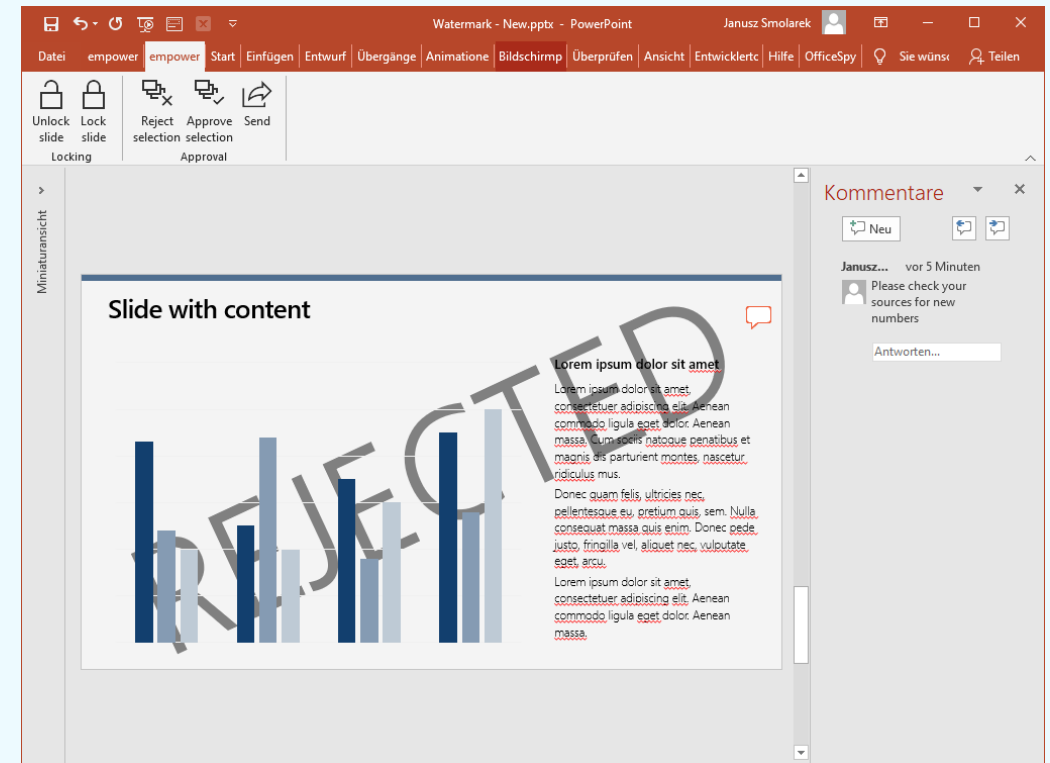
04

empower[®] extensions



Compliance Module

Softbank uses Dotapprove to check and release sensitive content. With the empower[®] extension “Compliance Module” the whole process for PowerPoint slides is greatly simplified and guided. In addition to the obvious functions like edit, release or reject slides, actions can be commented, and the slides can be sent directly to the applicant via e-mail. Additionally, released slides are protected against unauthorized changes.



05

Process & next steps



Process of an integration project



1



2



3



4



Welcome to empower[®]

If you miss something at empower[®] or already use tools that you would like to have at empower[®], no problem, contact us!

Consultation

We will arrange a consultation meeting with you to discuss your requirements. We then draw up a rough project plan.

Specification / Implementation

Here follows the implementation with an upstream specification phase if necessary. During the conversion you can view preview versions.

Distribution / Training

After distribution it is possible to arrange a demo for a larger group of people.

empower 