

Identifying Conehead Termite (*Nasutitermes corniger*) Alates

B.L. Thorne April 2015; updated August 2016

In Broward County, Florida, **conehead termite alates** will be the only termite swarmers with **DARK BODIES AND DARK WINGS**. They will be **LARGER** than most termite alates, certainly larger than any termite alates with dark bodies.

	BODY	WINGS
Conehead termite <i>Nasutitermes corniger</i>	dark, larger than most	dark
Eastern subterranean termite <i>Reticulitermes flavipes</i>	dark, relatively small	transparent
Subterranean termite <i>Reticulitermes virginicus</i>	brown, relatively small	transparent
Subterranean termite <i>Reticulitermes hageni</i>	golden brown, quite small	transparent
Formosan subterranean termite <i>Coptotermes formosanus</i>	golden brown, large	transparent
Asian subterranean termite <i>Coptotermes gestroi</i>	golden brown, large	transparent
Western drywood termite <i>Incisitermes minor</i>	brown broad pronotum	smokey darkish many veins along outer edge
<i>Prorhinotermes simplex</i> sometimes called "Florida dampwood termite" or "Cuban subterranean termite," but neither is an official common name	brown / golden brown	transparent

► Conehead termite *Nasutitermes corniger*:



Conehead termite alates
[photo © B.L. Thorne]



Conehead termite alates on left; *Reticulitermes flavipes* alates on right [photo © B.L. Thorne]



► **Eastern subterranean termite**
Reticulitermes flavipes

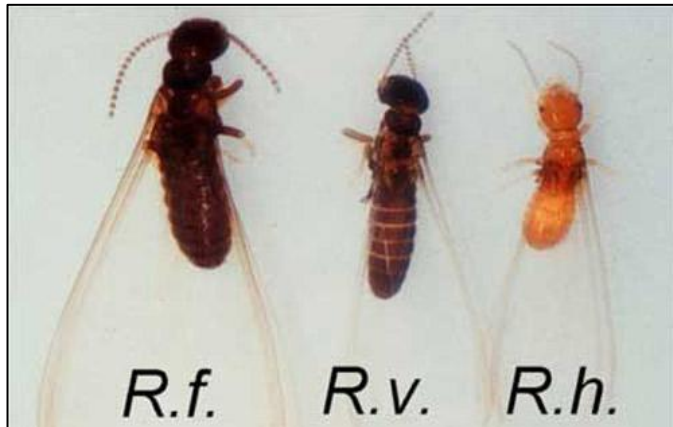
Photo from bugguide.net



► **Subterranean termite**
Reticulitermes virginicus

Photo from entnemdept.ufl.edu

► **Subterranean termite**
Reticulitermes hageni



R. flavipes

R. virginicus

R. hageni

► **Formosan subterranean termite**
Coptotermes formosanus

Photos from www.caes.uga.edu
and www.lsuagcenter.com



Coptotermes

Reticulitermes

► **Asian subterranean termite**

Coptotermes gestroi

Alate looks quite similar to *C. formosanus*, but with slightly different tiny hair patterns



Coptotermes formosanus

► **Western Drywood Termite**

Incisitermes minor

Photo from nathistoc.bio.uci.edu

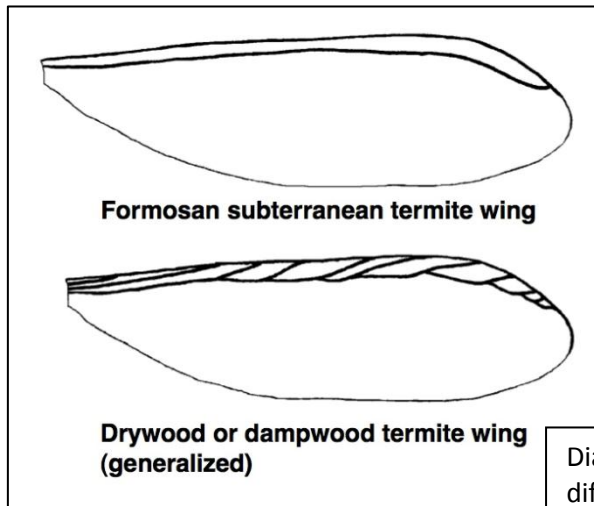


Diagram from manoa.hawaii.edu shows (generalized) difference in wing venation pattern at the outer margin of Formosan termite (top) vs drywood termite (bottom) wings. [Side note: outer edge vein patterns in conehead termite wings are closer to the top pattern than the bottom]

► ***Prorhinotermes simplex***

Sometimes called “Florida dampwood termite” or “Cuban subterranean termite,” but neither is an official common name

Photo from: entnemdept.ufl.edu

