

# The Quarterly Journal of the Maximum Card Study Unit

## NORTH AMERICAN MAXIMAPHILY

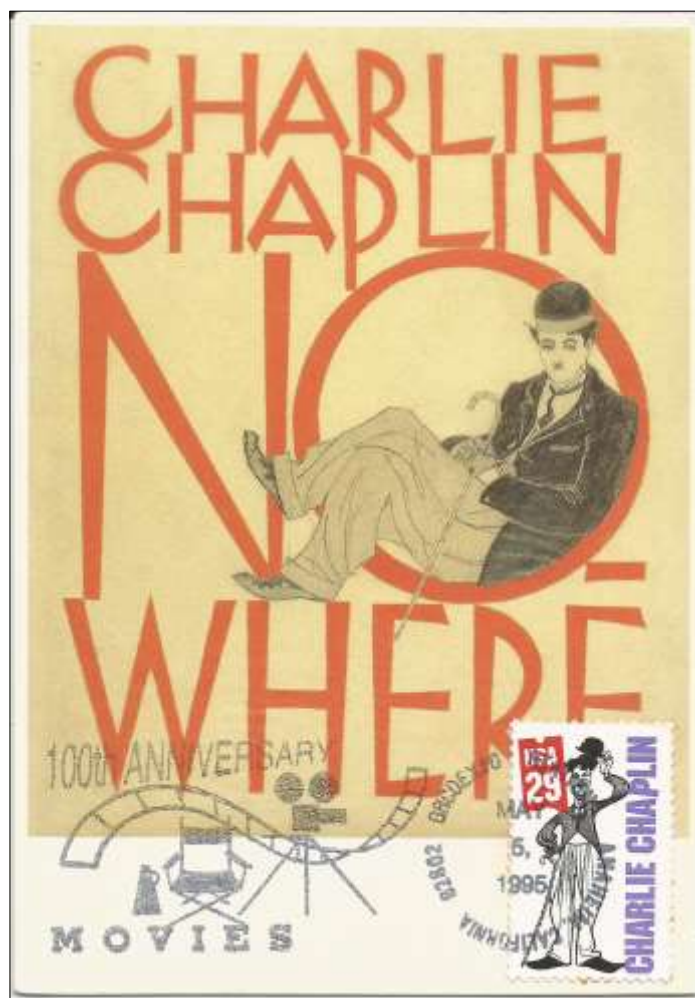
### Volume 40, No. 4 Oct/Nov/Dec, 2022

#### TABLE OF CONTENTS

Letter from the President .....	2
Charlie Chaplin .....	3
California Through Maximum Cards ....	9
Older Stamps—New Maximum Cards .	21
“I’m Complaining” .....	22
In Praise of USPS Employees .....	24
Recent Realizations-Mighty Mississippi	26
Travel and Maximum Cards .....	27
Entries in the 2021 USA Maximum Card of the Year Competition.....	29
Membership Application .....	31

#### Board of Directors

Terry Watson:	President
George Constantourakis:	Honorary President
Sun Yu Ng,:	Vice President
Gerard Marandino:	Treasurer
Dorin Cojocariu	Assistant Editor



Stamp: Charlie Chaplin, Scott #2821

Postcard: Charlie Chaplin “No Where”, published by Art Unlimited

Postmark: “100th Anniversary: Movies”, Anaheim, CA 5/5/1995

## Letter From the President

We are currently in the midst of MACSU's 2021 Maximum Card of the Year Competition. Members have submitted ten maximum cards that they realized in 2021. Voting will end on October 23 and the winning card will be announced soon. Scans of the USA maximum card entries can be found on pages 29 and 30.

It has been an active quarter for MACSU with several members receiving recognition and awards. Vice President Sun Yu Ng received a Vermeil award in the Philatelic Literature category at the Great American Stamp Show (GASS) that was held in August in Sacramento. His manuscript was entitled *Cairo Hotel Maxicard Analytics and Pyramids Maxicard Analytics*.

Also, at GASS, I entered a four-frame exhibit entitled, "Celebrate the Century Through Maximum Cards". This exhibit included most of the maximum cards that were featured almost quarterly in *North American Maximaphily* over the past seven years (Volume 33, #3 thru Volume 40, #1). The exhibit received a Large Vermeil award.

At a recent philatelic-numismatic fair held in Verona, Italy, MACSU member Giorgio Migliavacca was presented with the Michele Picardi 2020 Award by the Italian Center for Thematic Philately (CIFT) for a manuscript that he wrote that was published by *Storie di Posta* (vol. 20 November 2019). The manuscript was entitled "*From Anzio to Rome between errors and horrors*". The English version with new and interesting updates appeared on *Fil-Italia* no. 191 Spring 2022.

Our Assistant Editor, Dorin Cojocariu continues to have success with the Facebook Group that he founded and is the main administrator. Entitled "Maximaphily, Traditional and Non-traditional" can be joined at:  
<https://m.facebook.com/groups/157633454252151/>

### MAXIMUM CARD STUDY UNIT OF NORTH AMERICA

The Maximum Card Study Unit (MACSU) is an independent non-profit organization dedicated to the creation, collection, exchange, enjoyment, display, and study of Maximum Cards, by spreading the knowledge of Maximaphily among its members. The activities of MACSU are planned and carried on entirely by the volunteer services of its officers and members. MACSU is Affiliate # 106 of the American Philatelic Society, Chapter # 67 of the American First Day Cover Society and an affiliate of the American Topical Association.

#### Board Members:

Terry Watson  
President  
1825 Jenny Lane  
Lithia Springs, GA 30122  
U.S.A.  
[terryw7633@comcast.net](mailto:terryw7633@comcast.net)

George Constantourakis  
Honorary President  
2115 Girouard Ave  
Montreal, QC H4A 3C4  
CANADA  
[geo.constant@sympatico.ca](mailto:geo.constant@sympatico.ca)

Sun Yu Ng  
Vice President  
69 University Drive  
Menlo Park, CA 94025  
U.S.A.  
[sng94025@gmail.com](mailto:sng94025@gmail.com)

Gerard Marandino  
Treasurer  
5105 Skyline Village Ct.  
Alexandria, VA 22302  
U.S.A.  
[brooklyngerry@gmail.com](mailto:brooklyngerry@gmail.com)

## CHARLIE CHAPLIN, THE MOVIE GENIUS WHO GLADDENED THE HEARTS OF ALL HUMANITY

*A maximaphily overview that confirms the admiration of the philatelic world*

by Giorgio Migliavacca

Even today, 45 years after his death, Charlie Chaplin remains a difficult character to categorize. For some he is a simple character, sometimes romantic; for others, like Nandini Saraf - a revolutionary who has transformed the way of making movies with his talent, elevating the new medium to levels unthinkable at the dawn of cinema.

Thomas Burke described him as "a tragic figure"; according to the British Foreign Office authorities. Chaplin's sympathies were for the poor, the marginalized and those **who suffered more than anyone else. This perspective is clear in films such as "The Great Dictator" (1940) and "Modern Times" (1936). Moreover, the fact that Chaplin has never voted for an American president or for a member of the British parliament seems to confirm the malevolent speculations about this complex character to the point of arbitrarily labeling him as a communist. Biographer Richard Carr basically judged him as "a man of power".**

Born in 1889 in a London suburb to parents who made ends meet in the entertainment world, Charlie's childhood was as painful and full of sorrows as the separation of his parents, who relegated him to an orphanage.

After being a comedian, in 1914, he made his movie debut with the character of the vagabond (The Tramp) Charlot. In a short time, he would be seen wearing a bowler hat, mustache, walking stick, poodle shoes and pants and an unmistakable gait - a stereotype which marked his rapid artistic rise. FIG 1

In November 1914 he left Keystone to sign with Essanay, with whom he made 15 films. In 1916 he signed a contract with Mutual for which he made 12 films. In June 1917, Chaplin was

*Fig.1 - In 1999, Belgium issued a large set of stamps featuring the great personalities of the twentieth century. Charlie Chaplin was included in this set. The stamp depicts Charlie Chaplin in double portrait, as the iconic "Tramp" character and in his maturity.*





hired by First National Studios, after which he built Chaplin Studios himself. In 1919 he, Douglas Fairbanks, Mary Pickford and D.W. Griffith founded United Artists. FIG 2

*FIG. 2 - A young and very elegant Chaplin with a bow tie and struggling with the latest camera is displayed on a stamp in 2014 Kazakhstan. Soon the film industry realized that the public was fond of Chaplin who produced fabulous profits for the studios. Chaplin had a very long career that saw him as actor, screenwriter, producer, director, composer and comedian. Chaplin was decidedly multi-faceted in a broad sense and in many cases at levels unmatched. (Gian Carlo Torcelli collection)*



Fig. 2

During the Great War, Charlie Chaplin was heavily criticized by Lord Northcliffe for his decision to remain in Hollywood. In 1917, hundreds of white feathers - symbols of alleged cowardice - were sent to Chaplin in the mail just as the United States entered the fray. Even so, Chaplin had a **great success with “Charlot the Soldier” (1918), considered a booster of the morale of the troops and the best film of the period.**

In 1921, Chaplin was honored by the French government for his outstanding work as a director, and in 1952 he was elevated to the rank of Officer of the Legion of Honor. In 1972 he was awarded an Oscar for his "incalculable impact on cinematography, advancing it to the rank of art of the century". FIG 3

*FIG. 3 - In 2000 Albania greeted the new millennium with a stamp dedicated to Chaplin. (Gian Carlo Torcelli collection)*

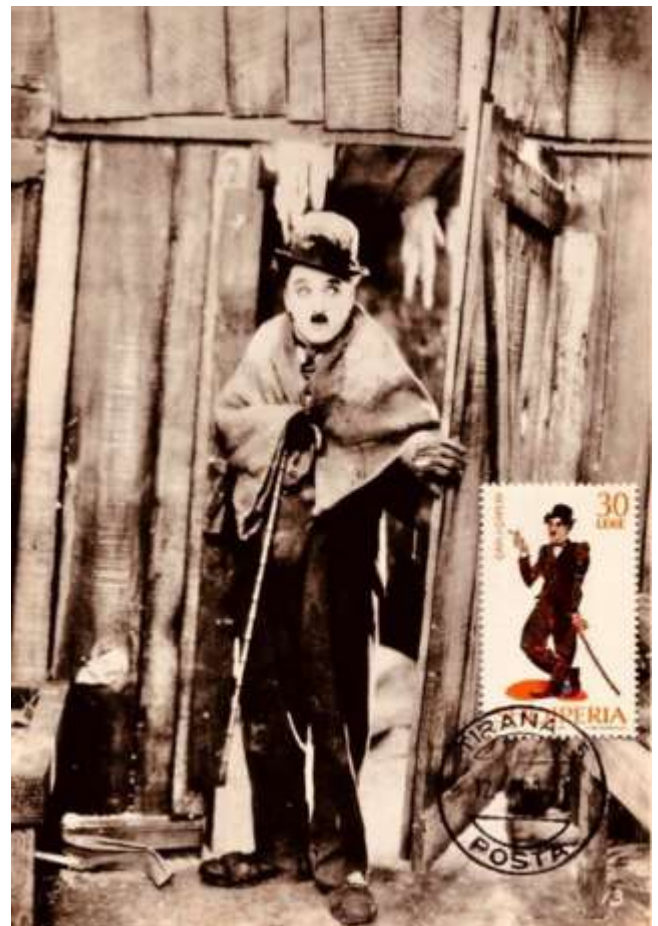


Fig. 3

With over eighty films over the course of his half-century career, Chaplin remains a legendary actor and director for millions of viewers. His nationality was often mistakenly referred to as American and even the Prince of Wales had asked him if he was American, to which Chaplin replied in a sober tone that he was English. FIG 4

*FIG 4 - In 1921, Chaplin's first feature film "The Kid" was a great success with critics and audiences. Even six year old Jackie Coogan in the title role had become an international idol. In 2021 France remembered philatelically the centenary of this unforgettable movie (Gian Carlo Torcelli collection).*



Fig. 4

His marriage to Lita Gray, officiated in 1924, ended in 1927 with a scandal and an unprecedented cash outlay to contain the damage inflicted by the media. Gray accused Chaplin of infidelity and abuse, as well as harboring "perverse sexual desires". **Chaplin's financial damage was small and most of his admirers were not particularly upset.**

At the dawn of the Second World War, Chaplin had one of his greatest hits with "The Great Dictator", clearly ridiculing Hitler. The film presents magic moments that are still valid today in a world that still has many dictators. Among the most hilarious moments we remember is the scene of Hitler dancing with the globe with 'ad hoc' background music, not even on purpose, by Wagner.

Chaplin was undoubtedly an excellent composer and had already published his first pieces in 1916; this silent activity continued during the following decades. In 1931 he composed the soundtrack for "City Lights", one of his most acclaimed films. Albert Einstein went to the world premiere in the company of Chaplin himself. Upon their arrival, they were greeted by a very warm 'standing ovation'. During their conversation there was an exchange of points of view that is still viral today. After the ovation, Einstein said, "What I admire the most about your art is your universality. You don't say a word, yet the world understands you!" Chaplin, responded, "True. But your glory is even greater! The whole world admires you, even if it doesn't understand a word of what you say."



In the mid-thirties, his fervent admirer and convivial companion Winston Churchill wrote that "the real Chaplin who reveals himself to those like me who had the pleasure of knowing him is not at all funny: he is a person of character and culture". Their friendship was consolidated in 1929 as a result of constant invitations to elite dinners and parties, culminating in the visit of Churchill and his sons and the British ambassador to the Los Angeles Studios where "City Lights" was being filmed

**On 25 February 1931, after arriving in England for the London premiere of "City Lights",** Chaplin dined and spent the night at Churchill's Kent home. Two nights later, on 27 February, the two men were photographed together at the dinner after the premiere, where Churchill proposed a toast to Chaplin, "a man who had started as a boy on the other side of the Thames and had gained the attention of the world. " FIG 5

Fig. 5

*FIG 5 - In 2000 San Marino devoted a series to the arts of the twentieth century in which Charlie Chaplin was pictured in his 1936 film "Modern Times".*



Fig. 6



*FIG. 6 – 1985 stamp issued by Great Britain to celebrate the most important movie directors of all times including Charlie Chaplin.*

In the early 1950s, the effects of anti-Communist American McCarthyism also plagued Chaplin with the petty move of a visa denial to return to the US. At that point the great artist, pacifist and progressive, moved to Switzerland; It should be noted that as a resident of the USA he paid his taxes on time but over the decades he never applied for American citizenship. However, in

1972 Chaplin returned to the US to receive his second Oscar; this was followed by the Knighthood conferred on him by Queen Elizabeth II. FIG 6

This great character died on Christmas night in 1977. Condolences were expressed globally and Laurence Olivier said of Chaplin that "He was probably the greatest comedian of all time and as such I hope he will be remembered." For their part, in the last decades the postal administrations of dozens of nations have bestowed many philatelic honors. In the obituary of Corriere della Sera, Giovanni Grazzini wrote: "He had in his smile the cry of the world and in his tears he made the joy of life shine."

To conclude, thanks are due to Gian Carlo Torcelli and other collectors for lending scans of various Maximum Cards celebrating Chaplin.

#### ESSENTIAL BIBLIOGRAPHY

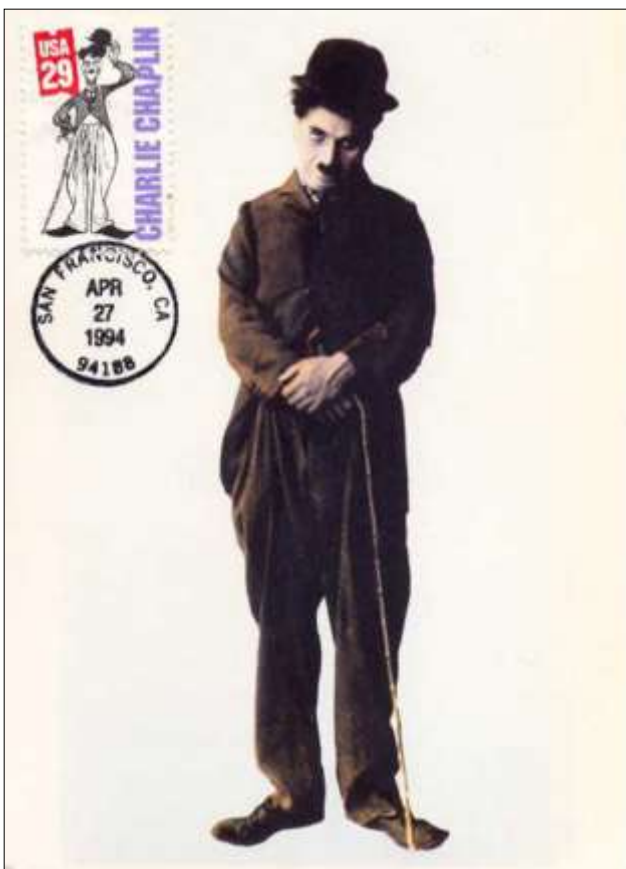
Nandini Saraf, *The Life and Times of Charlie Chaplin*, Ocean Books, New Delhi, 2013

Kyp Harness, *The Art of Charlie Chaplin*, Macfarland & Co., 2008

Richard Carr, *Charlie Chaplin: A political Biography*, Routledge, 2017

Wikipedia: Chaplin's biographical profile

Chaplin and Churchill: <http://www.charliechaplinarchive.org/it/stories/storie/chaplin-e-churchill>





Stamp: Charlie Chaplin, Spain

Postmark: FDOI "Charles Chaplin Centenarios, 9/19/1989

Stamp: Charles Chaplin, Italy

Postcard: "Charlie Chaplin in "The Kid"

Postmark: pictorial "Centenario Nascita Charlie Chaplin; Funny Film Festival", Modario Terme, 9/25/1989



Stamp: Charlie Chaplin from the Celebrate the Century series, Scott #3183a

Postcard: Charlie Chaplin, published by Dover Publications

Postmark: pictorial FDOI, Washington, DC 2/3/1995



## California Through Maximum Cards

The western state of California was admitted to the Union as the 31st state on September 9, 1850. California is the most populous state within the United States with a population around 39 million people. It is the third-largest state by area (163,696 square miles). **California's economy has a gross state product of \$2.7 trillion as of 2020.** If it were a country it would be the **fifth-largest economy in the world.** **California's nickname is the Golden State.**

The state flag of California is often called **"The Bear Flag"** as a grizzly bear is its prominent feature. The bear flag was first adopted in 1911. The bear is said to be modeled after **"Monarch", the last California grizzly bear in captivity.** The bear's design was not standardized until 1953.

The red star in the upper left-hand corner of the flag was inspired by the Lone Star Flag that was used by Juan Alvarado in his revolt against the Mexican government in 1836.



Stamp: California State Flag from the "Flags of Our Nation" series, Scott #4279

Postcard: California State Flag, published by Zazzle

Postmark: pictorial "Super Election Station", Sacramento, CA 11/2/2008

Stamp: Juan Rodriguez Cabrillo, Scott #2704

Postcard: Statue of Cabrillo at the Cabrillo National Monument in San Diego, CA, published by Road Runner Card Co.

Postmark: pictorial Old Town Philatelic Center, San Diego, CA 3/1/2004

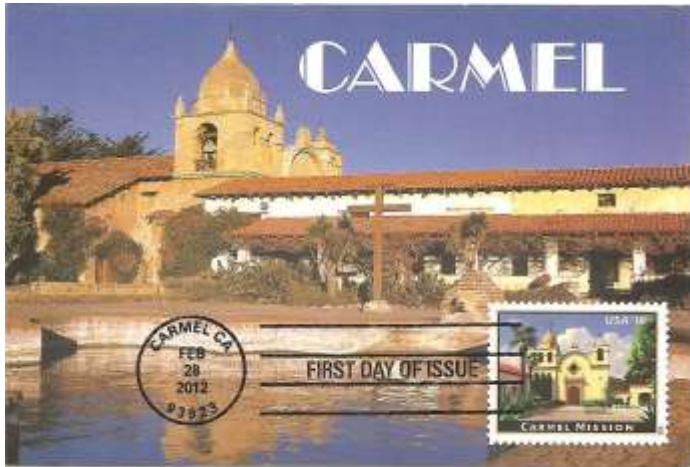


The first European to explore what is today the coast of California was Juan Rodriguez Cabrillo. In 1542, Cabrillo was commissioned to lead an expedition up the Pacific coast by the Viceroy of New Spain in Mexico City to search for potential trade opportunities. Historians believe that he anchored his flagship, the San Salvador, on Point Loma's eastern shore of San Diego Harbor.

In 1913, Woodrow Wilson designated part of the Point Loma area as a National Monument. The Cabrillo National Monument was significantly enlarged by Presidents Eisenhower and Ford. In 1939 the Portuguese government commissioned and donated the 14 foot statue of Cabrillo that now stands in the park. The sandstone statue was executed by sculptor Alvaro de Bree. Because of severe weathering, this statue was replaced by a replica in 1988.

In the late 18th century, Spanish missionaries led by Junipero Serra began setting up 21 missions on or near the coast of California. Serra was a Spanish Franciscan priest who left Europe at the age of 35 to be a missionary in the Americas. Serra was beatified by Pope John Paul II in 1988 and was canonized by Pope Francis in 2015. Historians view Serra as a controversial figure due to his alleged treatment of the native population.

The Carmel Mission was one of the 21 California missions that were established by Serra. Located in Monterrey, the Carmel Mission was first built in 1797. It is considered to be one of the most authentically restored Catholic mission churches in California. Junipero Serra is buried in the basilica.



Stamp: Carmel Mission, Priority Express, Scott #4650

Postcard: Carmel Mission, published by Smith Novelty Co.

Postmark: official, 4-bar FDOI, Carmel, CA 2/28/2012

After the War of Mexican Independence, the California area was loosely governed by the Mexican Empire. However, in 1846 American settlers revolted and a short-lived California Republic was formed. This Bear Flag Revolt by American settlers served as a prelude to the later American military invasion of California. After the Mexican-American War, the United States annexed much Mexican territory and the westernmost portion of this territory (Alta California) soon became the American state of California.

One week after the official annexation, gold was discovered. This event led to massive immigration into the area which quickly turned California into a major population center.



Stamp: Junipero Serra, Scott #C-116

Postcard: Frey Junipero Serra portrait, published by Bell Magazine Agency

Postmark: FDOI, San Diego, CA 8/22/1985



Stamp: California Statehood, Scott #997

Postcard: Miner, published by Kustom Quality

Postmark: pictorial Gold Rush Station, Buena Vista, CA 8/13/1994



The immigrants came by wagon train and then by stagecoach routes that were established. One of the stagecoach companies was the Butterfield Overland Mail Company. The company offered service from the East to San Francisco.

San Francisco quickly grew into a boom town. Its harbor became a shipping center with clipper ships involved with trade around the world. One of the most famous clipper ships is the Star of India which today is docked in San Diego.



Stamp: Overland Mail, Scott #2869t

Postcard: Western Stagecoach, published by Kustom Quality

Postmark: "Butterfield Overland Trail Station", Alvord, TX 10/25/1994

California benefited greatly from the completion of the Transcontinental Railroad. As rail lines pushed further and further into the wilderness, they opened up huge areas and California rapidly became an urbanized, industrialized economic and political powerhouse. The railroads were also important in the promotion of tourism to California.

One of the railroad companies that greatly benefited California was the Atchison, Topeka, and Santa Fe Railroad. In 1885, it chose Los Angeles as its western terminus. Its famous locomotive, the Super Chief, ran routes that were popular with film stars of the 30s and 40s, adding to another California mystique—Hollywood.



Stamp: triangle Star of India clipper ship, Scott #3130

Postcard: "Star of India", published by Plastichrome Colourpicture

Postmark: pictorial "Maritime Museum of San Diego Station", San Diego, CA 11/16/2019

Stamp: Super Chief Locomotive, Scott #3337

Postcard: Santa Fe Super Chief Locomotive in California orange groves, published by Western Publishers & Novelty Co.

Postmark: pictorial "Passenger Train Station", Amarillo, TX 8/27/1999





The railroad's "golden age" in California would end as travel shifted to automobiles and planes. The state was a pioneer in road construction. Built in 1937, the 4,200 foot Golden Gate Bridge was the longest suspension bridge in the world until 1964. The San Francisco–Oakland Bay Bridge ("Bay Bridge"), was completed in 1936, and today 280,000 vehicles per day pass over the bridge on its two-decks.



Stamp: (above) Golden Gate Bridge from the Celebrate the Century series, Scott #31851

Postcard: Golden Gate Bridge, published by Smith-Western

Postmark: pictorial "WestPex Station", San Francisco, CA 4/28/2000

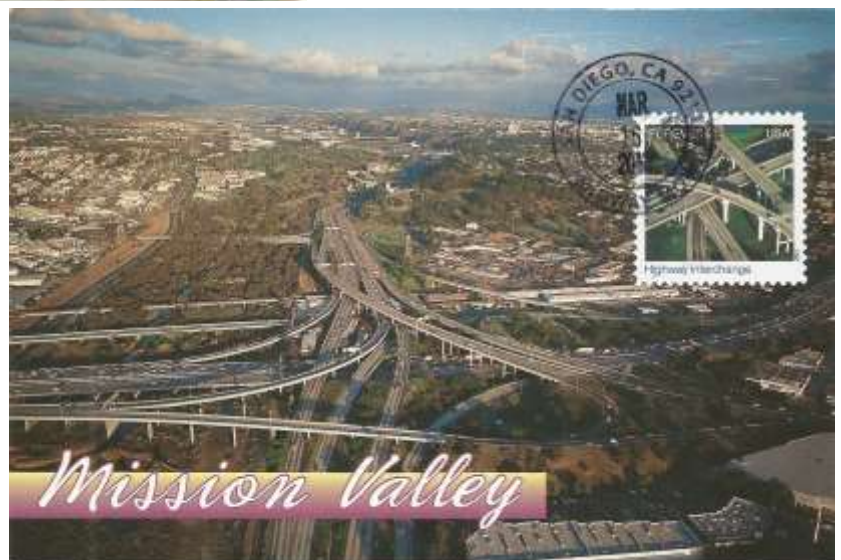


Stamp: (above) Greetings from California from the "Greetings from America" issue Scott #3565

Postcard: San Francisco-Oakland Bay Bridge, unknown publisher

Postmark: pictorial "Cherry Blossom Festival", San Francisco, CA 4/11/2015

Today, California is known for its car culture. The U.S. Census Bureau states that there are 31 million cars in California. The state is extensively connected with its system of freeways and **expressways**. The state's cities have earned the reputation for having severe traffic congestion. Elaborate highway interchanges were created to help traffic move more efficiently.



Stamp: Highway Interchange from the "Earthscapes" issue, Scott #4710o

Postcard: Mission Valley interchange, San Diego, CA, published by Smith-Western

Postmark: ordinary circle-date, San Diego, CA 3/15/2013

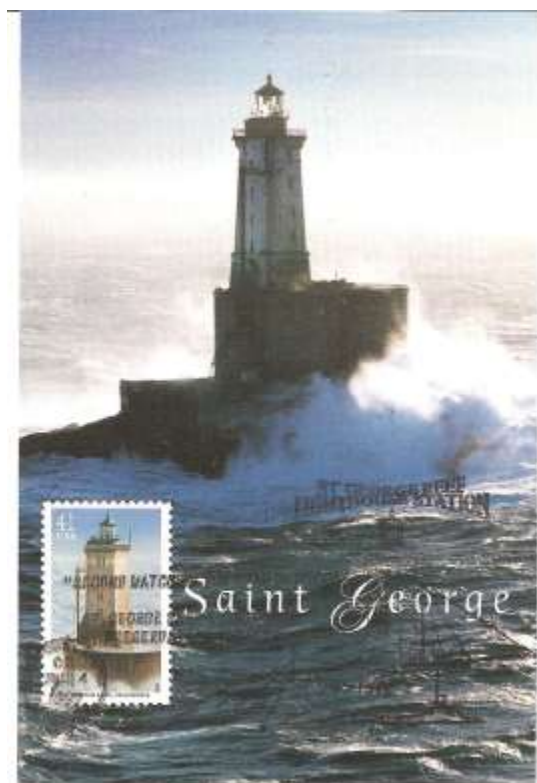
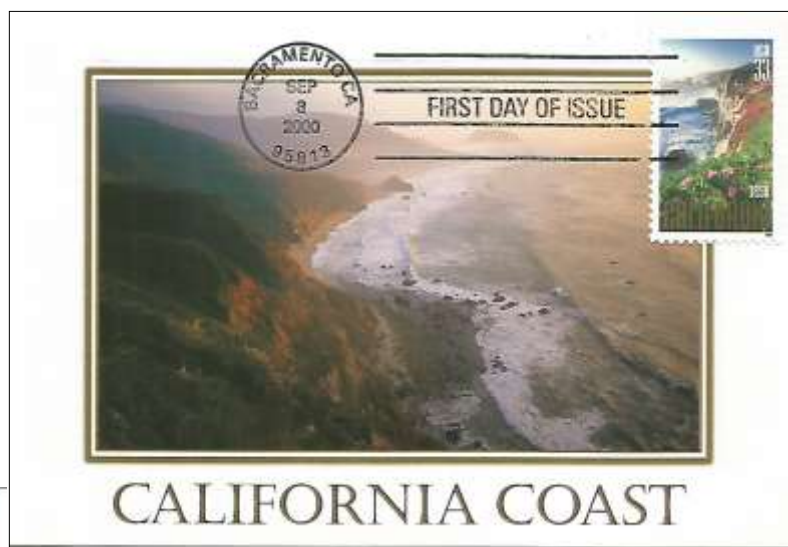
California has 840 miles of Pacific coastline. Mountain ranges within the state include the Sierra Nevada, the coastal mountain ranges in the west, the Cascade Range to the north, the Tehachapi Mountains in the south and the White Mountains that are shared with Nevada. **California's Central Valley is its very productive agricultural region. Forty-five percent of the state's area is forested. There are lakes and deserts. California's geography is extremely diverse.**

Stamp: California Statehood, Scott #3438

Postcard: Big Sur, published by Smith Novelty Company

Postmark: FDOI, Sacramento, CA 9/8/2000

Big Sur is a rugged and mountainous section of the central coast of California. It is one of the most scenic undeveloped coastlines in the world.



Stamp: St George Reef Lighthouse issue., Scott #4150

Postcard: St George Lighthouse, published by H E Dremman

Postmark: pictorial "St George Lighthouse Station", Crescent City, CA 7/4/2007

The USPS chose to feature the St George Reef Light in its Pacific Lighthouse issue. The light is remote as it is located 6 miles off the California coast. The 90 foot tower sits on a 45 foot man-made granite base. Its construction was erratic, logistically complex, expensive and dangerous. It is the most expensive lighthouse ever built in the United States and there were several deaths during its construction and operation.

Stamp: Oldest Tree, Bristlecone Pine from the Wonders of America issue, Scott #4049

Postcard: Bristlecone Pine Forest, published by Park Productions

Postmark: ordinary circle-date, Lone Pine, CA 10/11/2006

Bristlecone pines live at high altitude in arid regions of the western United States. It is believed that they can live up to 5,000 years.







As of 2019, there were 28 National Park Service Sites in California (nine of which are official national parks). A few of these parks are featured on this page.

Stamp: Redwood Forest Priority Mail, Scott #4378

Postcard: California Redwoods, published by John Hinde Curteich

Postmark: pictorial "PENPEX Station", Redwood City, CA 12/7, 2014

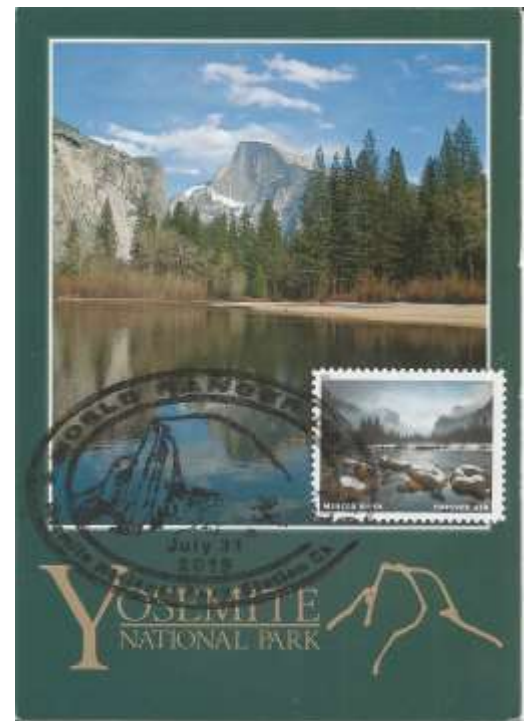
A number of California national parks contain Redwood trees.



Stamp: Death Valley National Park from the "O, Beautiful" issue, Scott #5298

Postcard: Death Valley, published by Little, Brown & Co.

Postmark: ordinary circle-date, Death Valley, CA 3/25/2019



Stamp: Yosemite's Merced River from the "Wild & Scenic Rivers" issue, Scott #5381a

Postcard: Merced River and Half Dome, Yosemite National Park, published by Impact

Postmark: pictorial "World Ranger Day", Yosemite National Park, CA 7/31/2019



Stamp: Joshua Tree Priority Mail, Scott #5347

Postcard: Joshua Tree National Park, published by Longshow Card Co.

Postmark: pictorial Joshua Tree, CA 82252 Station", Joshua Tree, CA 4/20/2019

Card realized by Sun Yu Ng



The natural beauty of California has been a major draw for tourists to the state. But tourists are also drawn to California for the beauty and history within its cities of San Diego, San Francisco, and Los Angeles.

The wine and film industries are major players in **the state's economy**, but both also bring in their share of tourists, as well.



Stamp: Cable Cars from the Transportation definitive series, Scott #2263

Postcard: San Francisco Cable Car, published by Smith Novelty

Postmark: four-bar FDOI, San Francisco, CA 10/28/1988



Stamp: Grapes definitive, Scott #5177

Postcard: antique, Grapes, unknown publisher (Europe)

Postmark: ordinary circle-date, Calistoga, CA 4/8/2019

Stamp: John Wayne, Scott #3876

Postcard: John Wayne & Dean Martin on set, published by News Productions

Postmark: pictorial FDOI, Los Angeles, CA 9/8/2004

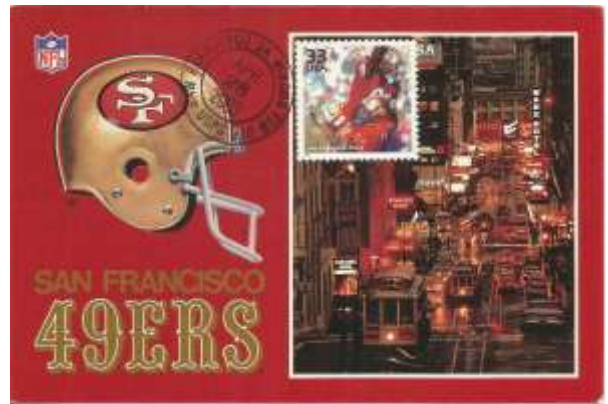


California has 19 major professional sports franchises. This is far more than any other state. In 2000, the USPS recognized the dominance of the San Francisco 49ers National Football League team in the 1980s with the issuance of a stamp from the Celebrate the Century series.

Stamp: San Francisco 49ers, Scott #3190c

Postcard: San Francisco 49ers, published by Smith Novelty

Postmark: ordinary circle-date, San Francisco, CA  
4/28/2003



The 1932 and 1984 summer Olympic Games were held in Los Angeles. The city will again host the Olympics in 2028. Lake Tahoe hosted the 1960 Winter Olympics, making California the only state to hold both the summer and winter games.

Stamp: Men's Gymnastics (Air Mail), Scott #C101

Postcard: Men's Gymnastics, published by the United States Postal Service

Postmark: pictorial "Gymnastics Station", Los Angeles, CA 7/9/1984



Stamp: Super Bowl I from Celebrate the Century issue, Scott #3881i

Postcard: USC Campus and the Coliseum, published by Mitock & Sons

Postmark: FDOI, Green Bay, WI 9/17/1999

The first Super Bowl was held in Los Angeles, California on January 15, 1967. The Green Bay Packers were the winners.

In the 1960s and 70s, the UCLA basketball team was dominant in college basketball under their coach John Wooden and star players, Kareem Abdul-Jabbar and Bill Walton.



Stamp: Basketball Centennial, Scott #2560

Postcard: Lou Alcindor (Kareem Abdul Jabbar), published by Fotofolia

Postmark: pictorial "Coach John Wooden Station", Reseda, CA 10/14/1999(?)



California has played a significant role in the aeronautical field. Lockheed, Northrop, Consolidated Aircraft, and McDonnell Douglas are companies that manufactured military and commercial aircraft in California. Numerous historical aviation events also occurred in California, including Amelia Earhart's take off from Oakland for her attempted solo crossing of the Pacific Ocean, the first supersonic flight by the X-1 in 1947 (Muroc Army Air Field), and the first airmail cargo across the Pacific Ocean. This latter event was accomplished when a China Clipper plane left Alameda, California and flew to Manila in 1935.

Stamp: 314 Clipper from the 1997 Classic American Aircraft issue, Scott #3142r

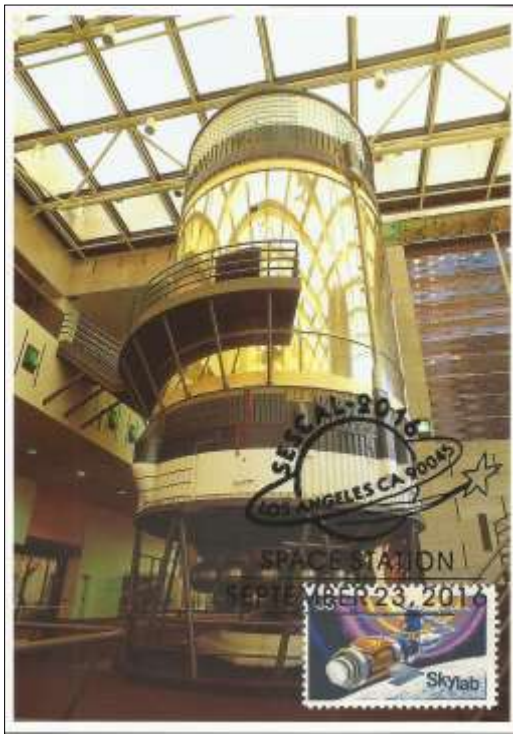
Postcard: Clipper over Golden Gate Bridge, published by Aviation Cards

Postmark: pictorial "China Clipper First TransPacific Airmail Flight, 75th Anniversary Station", Alameda, CA 11/22/2010



California's Jet Propulsion Laboratory is a federally funded research and development center that is owned by NASA. Its primary function is to construct and operate planetary robotic spacecraft. As such, it has been involved in most NASA projects, including Skylab.

Located in San Diego, County California, the Palomar Observatory is an astronomical research Observatory owned and operated by the California Institute of Technology. It was commissioned in 1928 and it houses the 200-inch (5.1 m) Hale Telescope. In 1948, the US issued a stamp of the Palomar Observatory.



Stamp: Skylab, Scott #1529

Postcard: Skylab, published by Smithsonian Institution

Postmark: "Space Station", Los Angeles, CA 9/23/2016

Stamp: Edwin Hubble, Scott #4226

Postcard: Palomar Observatory, published by Faye & Smith

Postmark: circle-date, Palomar, CA 6/12/2008





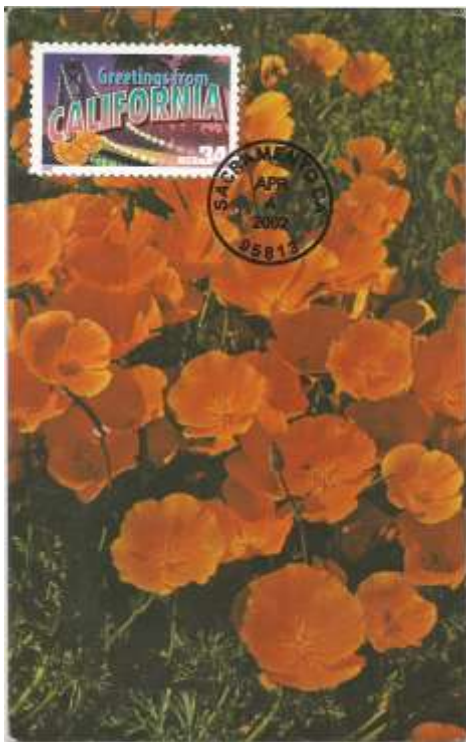
A few of California's insignias are located on this page. The state bird is the California Quail. The state flower is the California Poppy. The state sport is surfing and the state insect is the California Dogface Butterfly.



Stamp: California Quail, Scott #1957

Postcard: California Quail, published by Capital Engraving

Postmark: pictorial "Havasu National Wildlife Refuge Station", Needles, CA 3/15/2003



Stamp: Greetings from California, Scott #3565

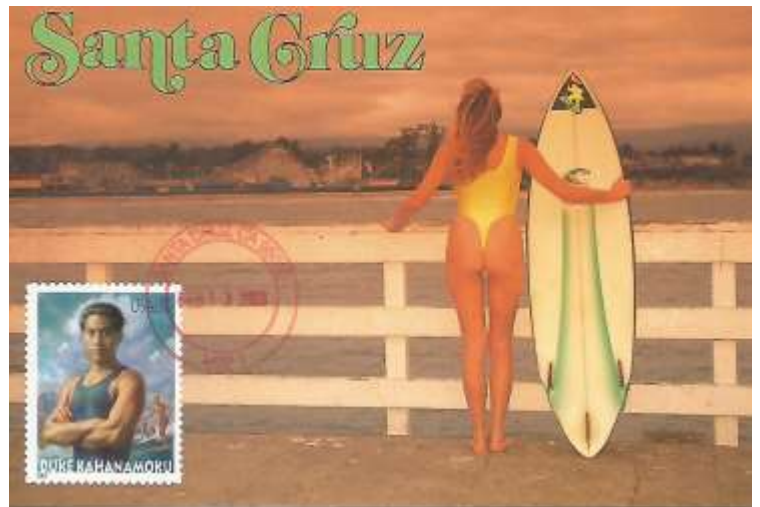
Postcard: California Poppies, published by Score Card Co.

Postmark: FDOI, Sacramento, CA 4/4/2002

Stamp: California Dogface Butterfly, Scott #5346

Postcard: Daylight Saving Time notification card published by Cornett Lot Marketing Co.

Postmark: pictorial FDOI, Kansas City, MO 1/27/2019



Stamp: Duke Kahanamoku, Scott #3660

Postcard: Santa Cruz, CA published by Smith Novelty Co.

Postmark: ordinary circle-date, Santa Cruz, CA 2/13,2003



Stamp: California Sea Lion, Scott #2229

Postcard: Seal Rocks, published by Western Publishing & Novelty Co.

Postmark: pictorial "Sea Lion Encounter Station", Sacramento, CA 8/21/2008

The California Sea Lion is one of six species of sea lions. Its natural habitat ranges from southeast Alaska to central Mexico,.



Stamp: California Condor, Scott #3105i

Postcard: California Condor, unknown publisher

Postmark: "Turkey Vulture Festival Station", Weldon, CA 9/24/2005

The California Condor became extinct in the wild in 1983. It has since been reintroduced into Utah, Arizona, California and Baja, Mexico.

Stamp: Walt Disney Concert Hall, Scott #3910

Postcard: Walt Disney Concert Hall, published by CafePress

Postmark: ordinary circle-date, Los Angeles, CA 6/22/2015

Designed by Frank Gehry, the Walt Disney Concert Hall was opened in 2003. It seats 2,265 people. The Hall is the home of the Los Angeles Philharmonic Orchestra.



**San Francisco's Palace of Fine Arts** was originally for the 1915 Panama–Pacific International Exposition to exhibit works of art. It was completely rebuilt from 1964 to 1974, It is the only **remaining structure of the 10 "palaces"** that were part of the exhibition.

Stamp: Palace of Fine Arts, Priority Mail, Scott #5667

Postcard: Palace of Fine Arts, published by Impact

Postmark: FDOI digital color, San Francisco, CA 2/14/2022





Stamp: Ocelot from the Endangered Species issue, Scott #3105e

Postcard: Ocelot by J J Audubon, Published by Dover Publications

Postmark: pictorial FDOI "San Diego Zoo", San Diego, CA 10/2/1996

Among the finest zoos in the world, the San Diego Zoo houses 4,000 animals on **1,000 acres in San Diego's** Balboa Park. It is the most visited zoo in the United States with 4 million visitors in 2018.

Two U.S. Presidents have deep ties to the state of California. Richard Nixon was born in Yorba Linda, California and served the state as a Congressman and a Senator. He was elected to be the 36th President of the United States in 1968. Ronald Reagan moved to California in 1937 to pursue an acting career. Reagan was elected as governor of California in 1966 and elected as the 40th President in 1980.



Stamp: Richard Nixon, Scott #2955

Postcard: Richard Nixon, published by Fotofolio

Postmark: "Presidential Inauguration Station", Washington, DC 1/20/2009



Stamp: Ronald Reagan, Scott #3897

Postcard: Ronald Reagan portrait, published by Morris Katz

Postmark: circle-date FDOI, Simi Valley, CA 2/9/2005

## Older Stamps—New Maximum Cards

The FIP *Guidelines for Judging Maximaphily Exhibits* states that “the stamp must be valid for postage” (3.1 c). While some countries limit the duration of a stamp’s validity, the US Postal Service does not. Thus, any mint USA stamp can be used in the realization of a maximum card. One could theoretically use Scott #1 to make a maximum card, although that would not be very smart. Three examples of the use of older stamps used in realizations this past summer are featured below. The stamps range from being issued 11 years ago to 40 years ago.



Stamp: Strawberry from the 2011 “Garden of Love” stamp issue, Scott #4539

Postcard: Strawberry, antique postcard published by Meisner & Buch (German)

Postmark: pictorial, “Strawberry Festival Station”, Leonard, MI 7/16/2022

Stamp: Harness Racing from the 1993 Sporting Horses issue, Scott #2758

Postcard: reproduction of antique card, published by Slackspan Images eBay Store

Postmark: pictorial, “Du Quoin State Fair Station”, Du Quoin, IL 8/27/2022



Stamp: (below) Louisiana Pelican from the 1982 State Birds & Flowers issue, Scott #1970

Postcard: Louisiana State Bird, Eastern Brown Pelican, published by Capital Engravings.

Postmark: ordinary circle-date, Pelican, LA 8/10/2022



An issue that one may be confronted with when realizing maximum cards with older stamps is that USPS regulations require that the full first-class postage rate for postcards be on the same side of the card. I put the needed additional amount of stamps on the address side and most post offices will honor my request for a cancellation. This is more true with smaller post offices.



## I'm Complaining!

Terry Watson

I don't like to complain and I don't like complainers, but sometimes obtaining decent postmarks on maximum cards can be so frustrating that I just have to vent. If you, too, do not like complainers, don't read any further.

The obtaining of perfect postmarks in the realization of maximum cards is problematic. With slick post cards and inferior inks that some post offices use, one can expect that up to 20% of your realization attempts will not result in adequate postmarks. This is not true for the FDC cancellations provided by the professionals in Kansas City. In my experience, they rarely mess up cancellations.

However, when requesting cancellations, we should expect the employees of the USPS to at least be able to follow the directions given to them. In my cover letter to Postmasters or Customer Service representatives I always state **“that some portion of the stamp should be hit by the cancellation device”**. I then also place a small post-it note on the postcard designating exactly where I would like the postmark to be placed. Clear enough, right?

Every year, the Sacramento, California post office offers numerous special pictorial postmarks for the California State Fair. Many of these postmarks are topically useful. In past years, I have received very good realizations from the various California State Fair Stations. This year the Sacramento post office offered 17 different pictorial postmarks for the State Fair. I was excited about the possibilities and I sent off 16 postcards requesting the special cancellations. Imagine my disappointment when the cards were returned to me and only four of the sixteen cards were correctly postmarked. **One card's postmark was slightly smeared (normal and expected), but the cancellation was misplaced on eleven of the cards.** Some of the results follow:



I submitted three Hiking postcards requesting Sacramento's **“California State Fair Forest Center Station”** postmark. The cancellation missed the stamp on all three cards. I can understand missing one card. **“Oh crap, I missed that stamp! I need to make sure that I hit the next two stamps”**. Nope!

Requests for pictorial **“Cats & Dogs”**, **“Award Winning Wine”** and **“Silent Disco”** postmarks also **“missed”** the stamps.

Stamp: Hiking from 2017 WPA Posters issue, Scott #5189

Postcard: WPA Hiking Poster, published by Zazzle

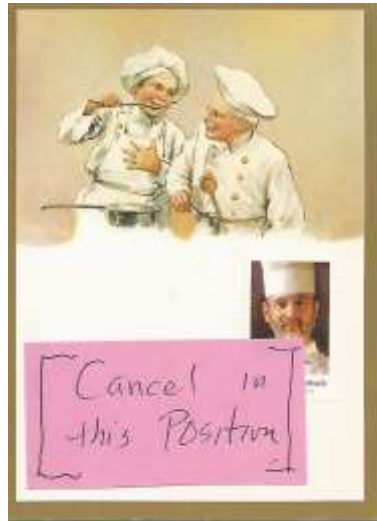
Postmark: **“California State Fair Forest Center Station”**, Sacramento, CA 8/21/2022

But two cancellations were especially egregious. While ten of the poor cancellations were at least on the side of the card that I requested, two cancellations were on the address side of the postcard. Despite the cover letter's request that "the stamps on the picture side of the postcard be cancelled" and post-it notes locating where I wished the postmark to be placed, the cancellations were placed on the address side of the card with there being no stamp on that side of the card. How does one miss the pink post-it note?

Stamp: Felipe Rojas Lombardi from the 2014 Celebrity Chefs issue, Scott #4923

Postcard: "Gastronomy, Original 1900" reproduction, published by I. R Bier AB

Postmark: pictorial "California State Fair Food Festival Station", Sacramento, CA 7/18/2022



Stamp: (below): First Responders, Scott #5316

Postcard: Philadelphia Fire Dept. Deluge Wagon, published by Frank Saia

Postmark: "CA State Fair Appreciation Day Station", Sacramento, CA 8/21/2022



Stamp: (left): Evergreen Trees with Gold Sky from the 2020 Winter Scenes issue, Scott #5634

Postcard: Winter Scene, published by Curt Teich & Co.

Postmark: pictorial "California State Fair Forest Center Station", Sacramento, CA 7/27/2022

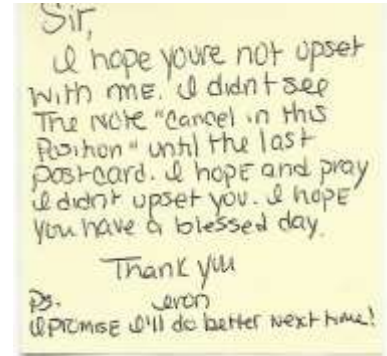
One of the four cards that were correctly cancelled by Sacramento, but just barely as the postmark only touches one of the perforations on the bottom left hand side of the stamp[.



# In Praise of USPS Employees

by Terry Watson

To be “fair and balanced”, there are postal employees that truly care about their responsibilities and want to support philatelists. I recently received the note to the right from a postal employee who did not quite get a cancellation request from me right, but was very apologetic—promising “to do better next time”. She needed not apologize. Her postmarks were actually were pretty good.



Sir,  
I hope you're not upset with me. I didn't see the note "cancel in this position" until the last post-card. I hope and pray I didn't upset you. I hope you have a blessed day.  
Thank you  
P.S. I PROMISE I'll do better next time!



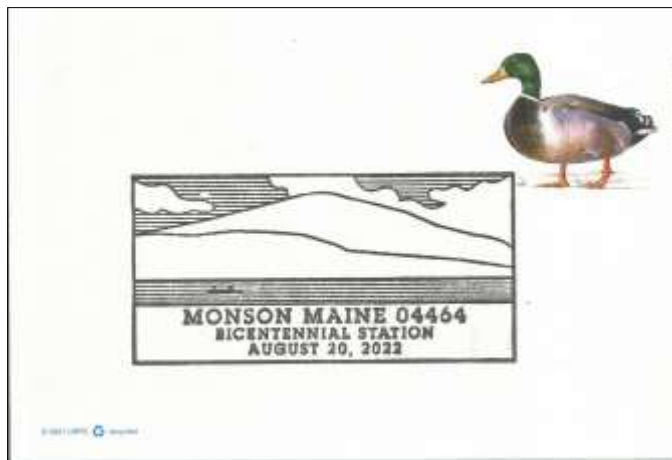
Stamp: Maine Flag from the 2010 Flags of Our Nation series, Scott #4295

Postcard: Bull Moose, published by Colourpicture

Postmark: pictorial, “Bicentennial Station”, Monson, ME 8/20/2022

Another recent special cancellation request resulted in additional philatelic items. In August, I requested the special postmark that was being offered in Monson, Maine. Their pictorial “Bicentennial Station” featured a stylized mountain and it seemed appropriate to use this cancellation to realize a Moose maximum card (left).

In addition to giving me clear, crisp postmarks, the Postmaster also included two Mallard Duck postal cards with the “Bicentennial Station” postmark (below left). That was a nice touch!



Postal Card: Mallard Duck, Scott #UX648

Postmark: pictorial, “Bicentennial Station”, Monson, ME 8/20/2022

But, some postal employees go far beyond their call of duty and have given me several philatelic items beyond my cancellation request. My recent request for an ordinary, circle-date postmark from Sitka, Alaska resulted in a realized maximum card (Fig. 1), two cache covers with special Sitka pictorial postmarks (Fig. 2 & 3) and a Sitka Post Office Dedication Ceremony bulletin from 1987 (Fig. 4). This bulletin included a history of the Sitka post office and another special pictorial postmark. These were much appreciated.

Fig. 1

Stamp: Grizzly Bear from the Arctic Tundra Wildlife issue,  
Scott #

Postcard: Grizzly Bear family, published by

Postmark: ordinary circle-date, Sitka, AK  
8/9/2022

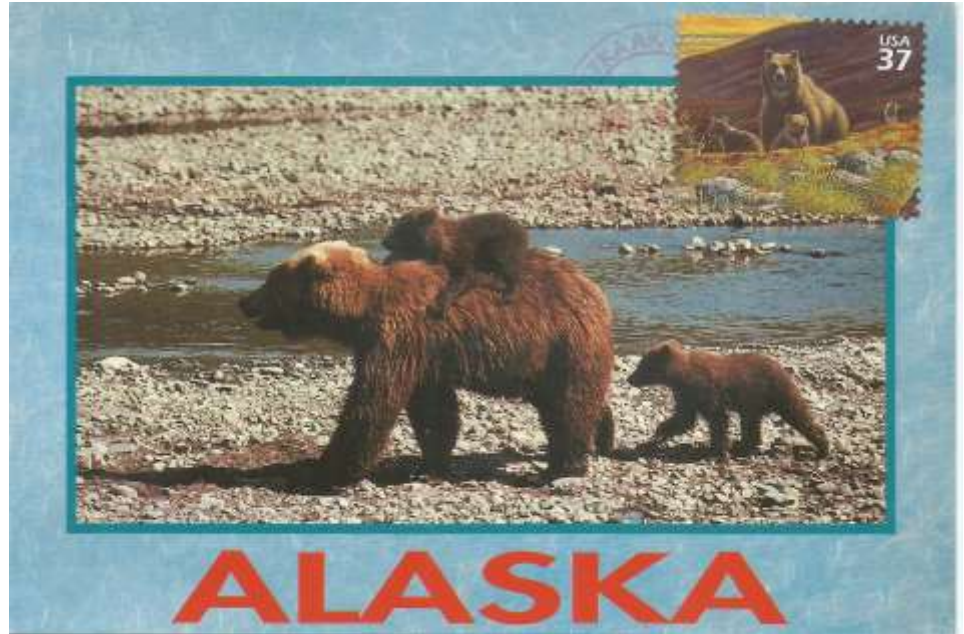


Fig. 2

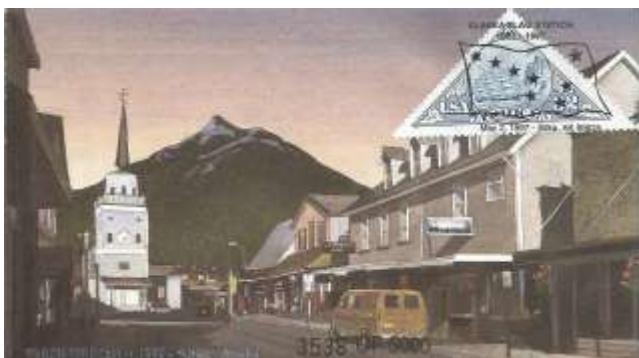


Fig. 3

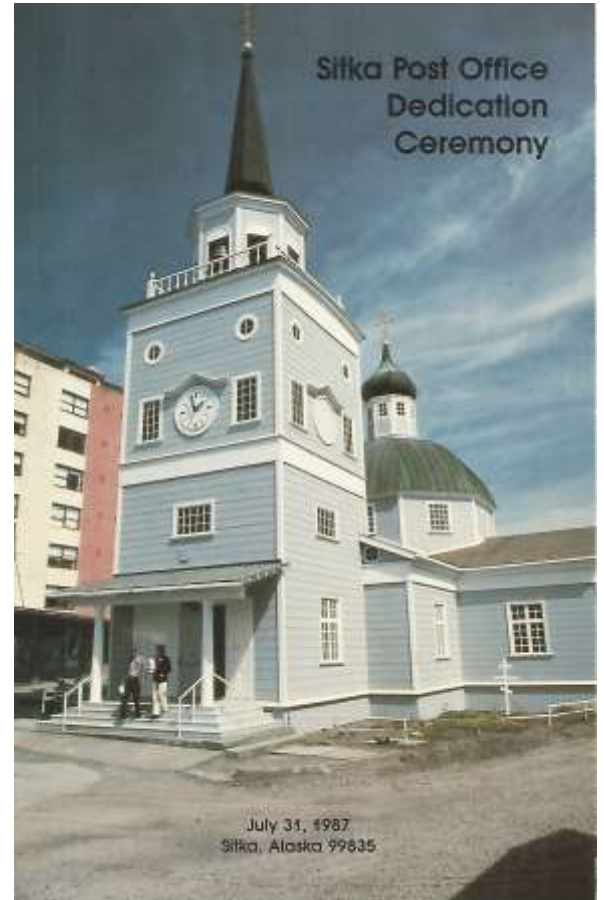
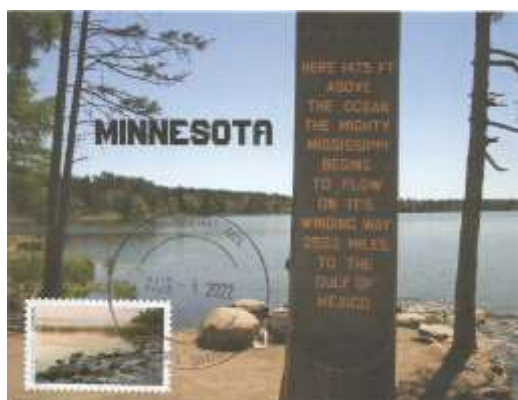


Fig. 4



## Recent Realizations—The Mighty Mississippi

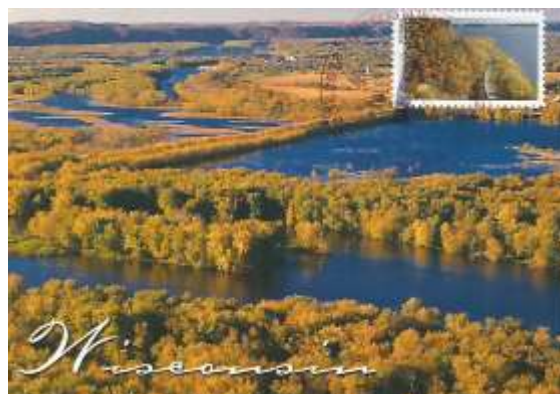
On May 23, 2022, the United States Postal Service issued ten stamps honoring the Mississippi River as it flows south through ten states. The Mississippi River flows 2,300 miles, from Minnesota's Lake Itasca to its Gulf of Mexico delta.



Stamp: MN, Scott #5698a

Postcard: Headwaters, Lake Itasca, published by Zazzle

Postmark: ordinary, Park Rapids, MN 8/4/2022



Stamp: WI, Scott #5698b

Postcard: Meeting of WI & MS Rivers, published by Scofield, Inc.

Postmark: ordinary, Prairie du Chien, WI 6/6/2022



Stamp: IA, Scott #5698c

Postcard: River Steamers Arriving, published by Strom News Agency

Postmark: unofficial FDOI, Dubuque, IA 5/23/2022



Stamp: IL, Scott #5698d

Postcard: MS River, published by Zazzle

Postmark: ordinary, Savannah, IL 8/11/2022



Stamp: MO, Scott #5698e

Postcard: St Louis Arch, published by Plastichrome

Postmark: pictorial, St. Louis, 6/16/2022



Stamp: KY, Scott #5698f

Postcard: Mighty Mississippi, published by Zazzle

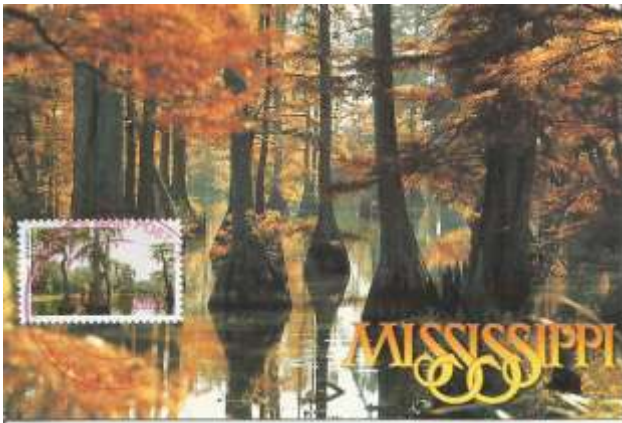
Postmark: ordinary circle-date, Hickman, KY 9/6/2022



Stamp: AR, Scott #5698g  
 Postcard: MS River, published by Zazzle  
 Postmark: ordinary, Arkansas City, AR 8/3/22



Stamp: TN, Scott #5698h  
 Postcard: Barges on MS River approaching Memphis, published by Colourpicture  
 Postmark: pictorial FDOI, Memphis, TN 5/23/2022



Stamp: MS, Scott #5698i  
 Postcard: MS Cypress Swamp, published by Jenkins Enterprises  
 Postmark: unofficial FDOI, Greenville, MS 5/23/2022



Stamp: LA, Scott #5698j  
 Postcard: New Orleans Bridge, published by Zazzle  
 Postmark: ordinary, New Orleans, LA 8/16/2022

## Travel and Maximum Cards

With a little forethought and planning, one can be prepared to realize maximum cards while traveling. In September, my wife and I did a 3,550 mile camping road trip up and down the Mississippi River. Several of the recently released Mighty Mississippi stamps were used.

Stamp: IA, Scott #5698c  
 Postcard: "Delta Queen" at Dubuque, IA,. Published by Steamboat Press  
 Postmark: ordinary, Dubuque, IA 9/23/2022





Maximum cards made while on vacation are not going to be exhibit quality. In fact, they can break a lot of the “rules”. Nobody else in the world might want them, but they have great sentimental value to you. They are souvenirs, reminders of your vacation.



Stamp: Monarch Butterfly & Goldenrod from 2017 Pollinators Issue, Scott #5232

Postcard: “Goldenrod, Kentucky State Flower”, published by Mike Roberts

Postmark: ordinary circle-date, Hickman, KY 9/14/2022



Stamp: Cardinal & Goldenrod from 1982 State Bird and Flowers issue, Scott #1969

Postcard: Cardinal, Kentucky State Bird, published by Capital Engraving

Postmark: ordinary, Hickman, KY 9/14/2022



Stamp: Greetings from Minnesota, Scott #3728

Postcard: Loon, Minnesota State Bird, published by Capital Engraving

Postmark: ordinary, Bemidji, MN 9/20/2022

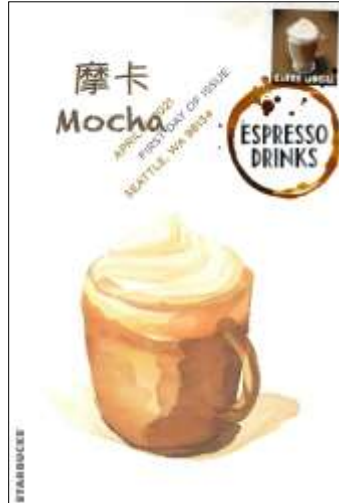


Stamp: Paul Bunyan from the 1996 Folk Heroes issue, Scott #3084

Postcard: “Visit Bemidji”, free ad postcard from the Bemidji Tourist Information Office

Postmark: ordinary circle-date, Bemidji, MN 9/20/2022

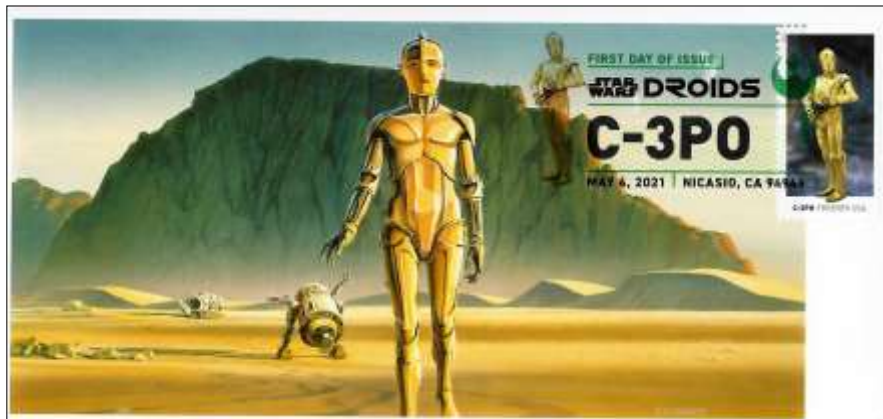
Entries in the 2021 USA Maximum Card of the Year Competition



Submitted by Ying Huang



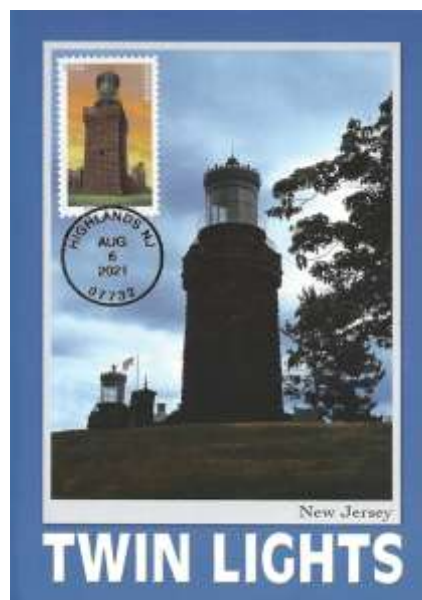
Submitted by Ying Huang



Submitted by Ying Huang



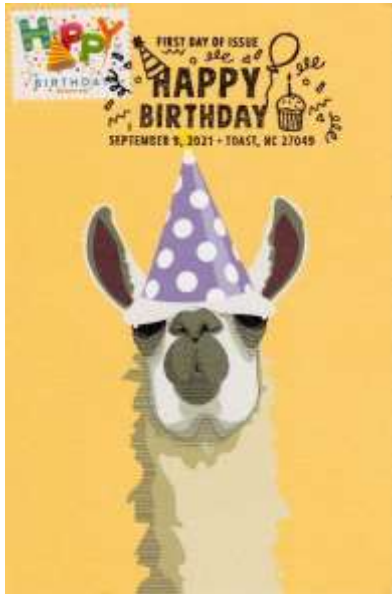
Submitted by Terry Watson



Submitted by Lloyd de Vries



Entries in the 2021 USA Maximum Card of the Year Competition



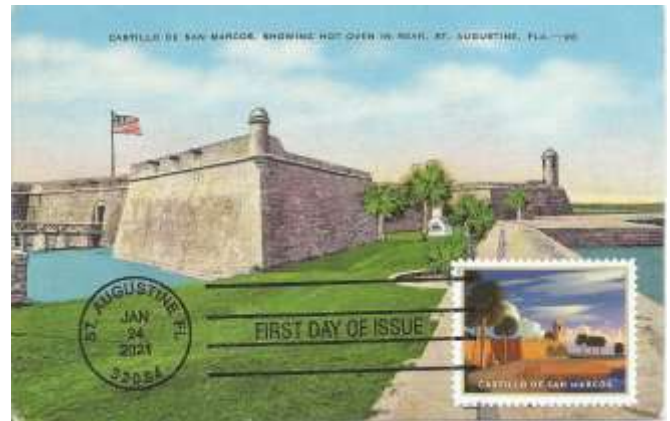
Submitted by Amanda Dempsey



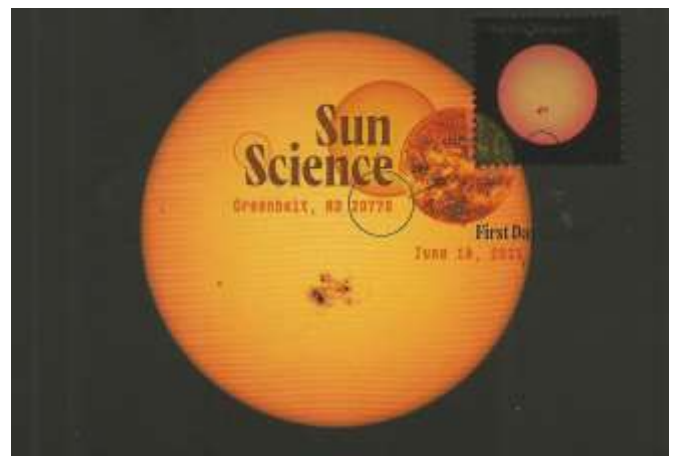
Submitted by Amanda Dempsey



Submitted by Amanda Dempsey



Submitted by Terry Watson



Submitted by Terry Watson

# MEMBERSHIP APPLICATION

## For The

### MAXIMUM CARD STUDY UNIT of AMERICA

Founded in 1978, the Maximum Card Study Unit (MACSU) is an independent non-profit organization dedicated to the creation, collection, exchange, enjoyment, display, and study of Maximum Cards, by spreading the knowledge of Maximaphily among its members.

Membership includes a subscription to Maximaphily USA, a quarterly journal featuring news of the maximum card world and articles by members and experts in the field.

Articles featuring topical collecting typically are richly illustrated with maximum cards and share the author's insightful knowledge of the subject and his own personal and helpful experience.

The pages providing information regarding activities of individual members allow

members to place free advertising for trading, buying, selling and exchanging information. Here the opportunity to make contacts with members in other countries is provided.

There are articles evaluating maximum cards according to accepted standards, pointing out good qualities and making suggestions for improvement.

Mail bid auctions are held on occasion, featuring inexpensive cards donated by members.

Every issue provides a page or two of illustrations of the most recent maximum card creations by our members. Every member gets a chance to show his cards and write an article about them.

.....

#### MACSU Membership Application

Name: \_\_\_\_\_

Address: \_\_\_\_\_

City, State, ZIP: \_\_\_\_\_ Country: \_\_\_\_\_

Email Address: \_\_\_\_\_

Collecting Interests (Topics, countries, etc.) \_\_\_\_\_

(Indicate if you want your name and interests listed in an upcoming issue: YES:  NO )

Club membership is only \$12 per year and includes a quarterly journal emailed to you. You can pay your dues via PayPal. Send your PayPal payment to MAXICARDS@gmail.com

Gerard Marandino, Treasurer  
5105 Skyline Village Ct.  
Alexandria, VA 22302