



## WIRE TERMINATION CATEGORY

- WIRE CONNECTORS
- CORD-END TERMINALS
- TERMINALS
- TOOLS



**HUA WEI INDUSTRIAL CO., LTD.**  
Taiwan · China · Thailand

# WIRE TERMINATION

WIRE CONNECTORS..... C-2  
CORD-END TERMINALS..... C-6  
TERMINALS ..... C-12  
TOOLS ..... C-32



# INTRODUCTION OF WIRE CONNECTORS

Hua Wei is the leader in providing a wide range of connectors suitable for the majority of all applications. In fact, the high quality, easy-to-use, versatile connectors from Hua Wei have been greatly used in different industries and different continents. Whatever the application - commercial, industrial, OEM, utility, residential, communications - and whatever the voltage - low, medium or high - we have the right connector for you.

**With the full range of connectors, Hua Wei offers a complete wire connection system:**

- Connectors for wire/cables from 8 through 22 AWG
- Winged, non-winged, grounding, high-temperature and close-end wire connectors
- Standard and unique products for specific applications
- Products for harsh or ambient environments
- Complete range of tools for close-end crimp connectors

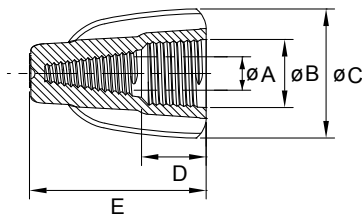


## Termination Systems Capabilities

| Features   | Benefits   |
|--|--|
| <ul style="list-style-type: none"> <li>• Big wings with molded vertical ribs</li> </ul>                  | Provide a secure grip for more torque on maximum wire combinations   |
| <ul style="list-style-type: none"> <li>• Color coded shells</li> </ul>                                   | Instant identification and selection of the wire connectors  |
| <ul style="list-style-type: none"> <li>• High conductivity square-wire spring and metal tubes</li> </ul> | Superior conductivity and low contact resistance with a strong connection  |
| <ul style="list-style-type: none"> <li>• Easy entry funnel design</li> </ul>                             | Avoid wire hang up and allows fast and secure insertion of the conductor   |
| <ul style="list-style-type: none"> <li>• Thermoplastic insulation materials</li> </ul>                   | Tough, UL 94-V2 flame-retardant shell rated at 105°C (221°F)<br>Ideal for harsh environments, excellent chemical, impact and abrasion resistance |
| <ul style="list-style-type: none"> <li>• Eletro-tin plating</li> </ul>                                   | Maximum corrosion resistance   |
| <ul style="list-style-type: none"> <li>• Specifications</li> </ul>                                       | According to UL specifications and RoHS compliance   |
| <ul style="list-style-type: none"> <li>• Dedicated tooling range</li> </ul>                              | Reliable and high quality crimps, for all kind of close-end crimp connectors   |

# W SERIES WINGED WIRE CONNECTORS

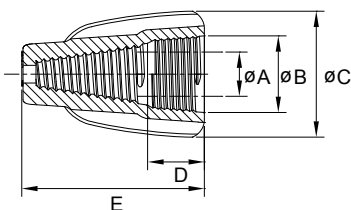
- 5 color-coded models cover a full range of wire sizes from 18 through 8 AWG
- Big wings with molded vertical ribs provide a secure grip for more torque on maximum wire combinations
- Fixed, square-wire spring maintains a strong grip that wire connections will not relax over time
- No pre-twisting required - positive grip design provides fast, easy installation
- Deep skirt helps protect against flash-over and turned-back strands for maximum dielectric protection
- Tough, UL94V-2 flame-retardant shell rated at 105°C (221°F)
- UL Listed to 486C and comply with Federal Specification W-S-610E
- Material: UL approved PP, steel spring



| Part No. | Temp Rating   | Voltage | Dimension mm (inch) |              |              |             |             | Suitable Wire AWG | Wire Strip Length mm (inch) | Color  |
|----------|---------------|---------|---------------------|--------------|--------------|-------------|-------------|-------------------|-----------------------------|--------|
|          |               |         | A                   | B            | C            | D           | E           |                   |                             |        |
| W1       | 105°C (221°F) | 600V    | ø6.7 (0.26)         | ø10.0 (0.39) | ø19.0 (0.75) | 8.7 (0.34)  | 25.9 (1.02) | 18-10             | 14.0 (0.55)                 | Yellow |
| W2       | 105°C (221°F) | 600V    | ø7.8 (0.31)         | ø11.2 (0.44) | ø19.0 (0.75) | 8.6 (0.34)  | 28.9 (1.14) | 18-8              | 14.0 (0.55)                 | Tan    |
| W3       | 105°C (221°F) | 600V    | ø9.4 (0.37)         | ø13.3 (0.52) | ø22.9 (0.90) | 9.2 (0.36)  | 31.9 (1.26) | 18-8              | 12.0 (0.47)                 | Red    |
| W4       | 105°C (221°F) | 600V    | ø10.5 (0.41)        | ø14.5 (0.57) | ø25.1 (0.99) | 9.6 (0.38)  | 32.8 (1.29) | 18-10             | 14.0 (0.55)                 | Grey   |
| W5       | 105°C (221°F) | 600V    | ø12.8 (0.50)        | ø17.5 (0.69) | ø31.8 (1.25) | 12.5 (0.49) | 40.2 (1.58) | 12-8              | 20.0 (0.79)                 | Blue   |

# WINGED GROUNDING WIRE CONNECTORS

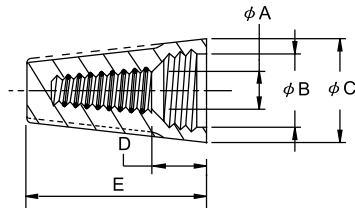
- Designed for making ground connections
- Big wings with molded vertical ribs provide a secure grip for more torque on maximum wire combinations
- Fixed, square-wire spring maintains a strong grip that wire connections will not relax over time
- Tough, UL94V-2 flame-retardant shell
- UL Listed to 467 and complies with Federal Specification W-S-610E
- Material: UL approved PP, steel spring



| Part No. | Temp Rating   | Voltage | Dimension mm (inch) |              |              |            |             | Suitable Wire AWG | Wire Strip Length mm (inch) | Color |
|----------|---------------|---------|---------------------|--------------|--------------|------------|-------------|-------------------|-----------------------------|-------|
|          |               |         | A                   | B            | C            | D          | E           |                   |                             |       |
| WG       | 105°C (221°F) | 600V    | ø9.4 (0.37)         | ø12.2 (0.48) | ø19.9 (0.78) | 9.1 (0.36) | 28.9 (1.14) | 14-10             | 12.0 (0.47)                 | Green |

## E SERIES WIRE CONNECTORS

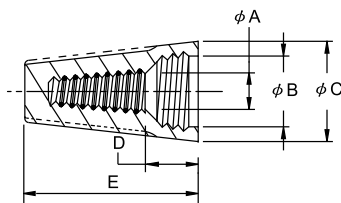
- Five color-coded models cover a full range of wire sizes from 22-10 AWG
- Fixed, square-wire spring maintains a strong grip that wire connections will not relax over time
- No pre-twisting required - positive grip design provides fast, easy installation
- Deep, wide skirt helps protect against flash-over and turned-back strands for maximum dielectric protection
- Tough, UL94V-2 flame-retardant shell rated at 105°C (221°F)
- UL Listed to 486C and comply with Federal Specification W-S-610E
- Material: UL approved PP, steel spring



| Part No. | Temp Rating   | Voltage | Dimension mm (inch) |              |              |             |             | Suitable Wire AWG | Wire Strip Length mm (inch) | Color  |
|----------|---------------|---------|---------------------|--------------|--------------|-------------|-------------|-------------------|-----------------------------|--------|
|          |               |         | A                   | B            | C            | D           | E           |                   |                             |        |
| E1       | 105°C (221°F) | 300V    | ø5.0 (0.20)         | ø6.0 (0.24)  | ø8.5 (0.33)  | 3.5 (0.14)  | 14.7 (0.58) | 22-18             | 9.0 (0.35)                  | Grey   |
| E2       | 105°C (221°F) | 300V    | ø6.0 (0.24)         | ø7.5 (0.30)  | ø10.1 (0.40) | 6.5 (0.26)  | 17.5 (0.69) | 22-14             | 12.0 (0.47)                 | Blue   |
| E3       | 105°C (221°F) | 600V    | ø6.2 (0.24)         | ø8.2 (0.32)  | ø11.2 (0.44) | 8.0 (0.31)  | 21.4 (0.84) | 22-14             | 12.5 (0.49)                 | Orange |
| E4       | 105°C (221°F) | 600V    | ø8.7 (0.34)         | ø10.5 (0.41) | ø13.7 (0.54) | 7.5 (0.30)  | 23.6 (0.93) | 18-10             | 13.0 (0.51)                 | Yellow |
| E6       | 105°C (221°F) | 600V    | ø9.3 (0.37)         | ø13.2 (0.52) | ø16.0 (0.63) | 10.1 (0.40) | 26.0 (1.02) | 22-10             | 14.0 (0.55)                 | Red    |

## E SERIES HIGH TEMPERATURE WIRE CONNECTORS

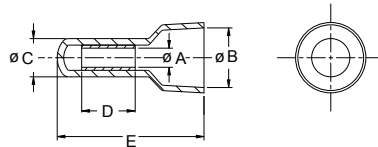
- Black, thermoplastic shell designed to be used in high-wattage light fixtures and signs where the extreme heat build-up commonly found
- Four models to cover wire ranges from 22 through 10 AWG
- Material: Polyamide 6,6, heat-resistant



| Part No. | Temp Rating   | Voltage | Dimension mm (inch) |              |              |            |             | Suitable Wire AWG | Wire Strip Length mm (inch) | Color |
|----------|---------------|---------|---------------------|--------------|--------------|------------|-------------|-------------------|-----------------------------|-------|
|          |               |         | A                   | B            | C            | D          | E           |                   |                             |       |
| E1B      | 180°C (356°F) | 300V    | ø5.0 (0.20)         | ø6.0 (0.24)  | ø8.5 (0.33)  | 3.5 (0.14) | 14.7 (0.58) | 22-18             | 9.0 (0.35)                  | Black |
| E2B      | 180°C (356°F) | 300V    | ø6.0 (0.24)         | ø7.5 (0.30)  | ø10.1 (0.40) | 6.5 (0.26) | 17.5 (0.69) | 22-14             | 12.0 (0.47)                 | Black |
| E3B      | 180°C (356°F) | 600V    | ø6.2 (0.24)         | ø8.2 (0.32)  | ø11.2 (0.44) | 8.0 (0.31) | 21.4 (0.84) | 22-14             | 12.5 (0.49)                 | Black |
| E4B      | 180°C (356°F) | 600V    | ø8.7 (0.34)         | ø10.5 (0.41) | ø13.7 (0.54) | 7.5 (0.30) | 23.6 (0.93) | 18-10             | 13.0 (0.51)                 | Black |

# C SERIES CLOSE-END CRIMP CONNECTORS

- Four models cover a wide range of wire combinations from 22 AWG strands through 10 AWG stranded
- Compact design fits easily into tight locations
- Flared skirt ensures easily wire entry and protects against turned-back strands
- UL Listed for 300V maximum building wiring; temperature rated at 105°C (221°F) maximum
- P/N with postfix V0 means the shell is UL94V-0 flame-retardant
- P/N with postfix "-L" means the tube is made of aluminum
- Material: UL approved 94V-2 Polyamide 6,6, copper tube or aluminum tube



| Part No. | Temp Rating   | Voltage | Dimension mm (inch) |              |             |            |             | Suitable Wire AWG | Wire Strip Length mm (inch) | Color   | Suitable Crimping Tools |
|----------|---------------|---------|---------------------|--------------|-------------|------------|-------------|-------------------|-----------------------------|---------|-------------------------|
|          |               |         | A                   | B            | C           | D          | E           |                   |                             |         |                         |
| C3       | 105°C (221°F) | 300V    | ø2.6 (0.10)         | ø7.6 (0.30)  | ø5.0 (0.20) | 6.8 (0.27) | 18.0 (0.71) | 22-16             | 16.0 (0.63)                 | Natural | GIT-517C1               |
| C4       | 105°C (221°F) | 300V    | ø3.2 (0.13)         | ø7.6 (0.30)  | ø5.8 (0.23) | 6.8 (0.27) | 20.4 (0.80) | 22-14             | 16.0 (0.63)                 | Natural |                         |
| C5       | 105°C (221°F) | 300V    | ø4.3 (0.17)         | ø10.3 (0.41) | ø7.0 (0.28) | 7.8 (0.31) | 24.8 (0.98) | 22-10             | 20.0 (0.79)                 | Natural |                         |
| C8       | 105°C (221°F) | 300V    | ø5.0 (0.20)         | ø12.2 (0.48) | ø9.2 (0.36) | 8.8 (0.35) | 27.0 (1.06) | 20-10             | 21.0 (0.83)                 | Natural | GIT-517C5               |
| C3-L     | 105°C (221°F) | 300V    | ø2.6 (0.10)         | ø7.6 (0.30)  | ø5.0 (0.20) | 6.8 (0.27) | 18.0 (0.71) | 22-16             | 16.0 (0.63)                 | Natural | GIT-517C1               |
| C4-L     | 105°C (221°F) | 300V    | ø3.2 (0.13)         | ø7.6 (0.30)  | ø5.8 (0.23) | 6.8 (0.27) | 20.4 (0.80) | 22-14             | 16.0 (0.63)                 | Natural |                         |
| C5-L     | 105°C (221°F) | 300V    | ø4.3 (0.17)         | ø10.3 (0.41) | ø7.0 (0.28) | 7.8 (0.31) | 24.8 (0.98) | 22-10             | 20.0 (0.79)                 | Natural |                         |
| C3V0     | 105°C (221°F) | 300V    | ø2.6 (0.10)         | ø7.6 (0.30)  | ø5.0 (0.20) | 6.8 (0.27) | 18.0 (0.71) | 22-16             | 16.0 (0.63)                 | White   |                         |
| C4V0     | 105°C (221°F) | 300V    | ø3.2 (0.13)         | ø7.6 (0.30)  | ø5.8 (0.23) | 6.8 (0.27) | 20.4 (0.80) | 22-14             | 16.0 (0.63)                 | White   |                         |
| C5V0     | 105°C (221°F) | 300V    | ø4.3 (0.17)         | ø10.3 (0.41) | ø7.0 (0.28) | 7.8 (0.31) | 24.8 (0.98) | 22-10             | 20.0 (0.79)                 | White   |                         |
| C3-LV0   | 105°C (221°F) | 300V    | ø2.6 (0.10)         | ø7.6 (0.30)  | ø5.0 (0.20) | 6.8 (0.27) | 18.0 (0.71) | 22-16             | 16.0 (0.63)                 | White   | GIT-517C1               |
| C4-LV0   | 105°C (221°F) | 300V    | ø3.2 (0.13)         | ø7.6 (0.30)  | ø5.8 (0.23) | 6.8 (0.27) | 20.4 (0.80) | 22-14             | 16.0 (0.63)                 | White   |                         |
| C5-LV0   | 105°C (221°F) | 300V    | ø4.3 (0.17)         | ø10.3 (0.41) | ø7.0 (0.28) | 7.8 (0.31) | 24.8 (0.98) | 22-10             | 20.0 (0.79)                 | White   |                         |

## INTRODUCTION OF CORD-END TERMINALS

### Features of Hua Wei's Cord-End Terminals

- Applicable for wires from 0.25 mm<sup>2</sup> to 150 mm<sup>2</sup>
- Included un-insulated, insulated single wire and insulated twin wires cord-end terminals
- Comply to related standard and satisfy all kinds of applications
- Applied to different hostile environment
- Ergonomical ratchet tools and effort-saving hydraulic pressure tools are available

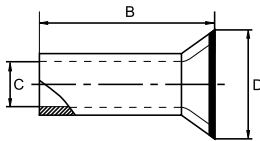


### Hua Wei's Cord-End Terminals Provide Most Efficient Termination Solution

| Features   | Benefits  |
|--|---|
| • High conductivity electrolytic copper                          | Superior conductivity and low contact resistance with a strong connection                                   |
| • Electro-tin plating  | Maximum corrosion resistance  |
| • Brazed seam  | No barrel separation during crimping  |
| • The contact area on the terminal is harder than the crimp area | Better resistance to mechanical deformations  |
| • Easy entry funnel design                                       | Fast and secure insertion of the conductor  |
| • Color coded insulators according to DIN cable size             | Instant identification and selection of the terminal size   |
| • PA insulation materials  | +85°C / +105°C, UL94V-2<br>Ideal for harsh environments, excellent chemical, impact and abrasion resistance |
| • Size marking   | Clear and easy identification of the terminal   |
| • Specifications   | All in accordance to DIN specifications   |
| • Choice of the connector  | Reliable and high quality crimps, for all kind of volumes   |

# UN-INSULATED CORD-END TERMINALS

- Designed with a seamless barrel to contain loose wire strands for superior terminations
- Ease of inserting wire into terminal block
- Meets DIN standards for wire containment
- Suitable for limited space panel applications
- Multiple pin lengths available for a variety of terminal blocks
- Material: Copper tube with tin plated



| Part No. | Conductor |       | Dimension mm (inch) |            |            | Tools                |
|----------|-----------|-------|---------------------|------------|------------|----------------------|
|          | sq. mm.   | AWG   | B                   | C          | D          |                      |
| CN005006 | 0.50      | 22-20 | 6.0 (0.24)          | 1.0 (0.04) | 2.1 (0.08) | GIT-510<br>GIT-516E1 |
| CN005008 | 0.50      | 22-20 | 8.0 (0.31)          | 1.0 (0.04) | 2.1 (0.08) |                      |
| CN005010 | 0.50      | 22-20 | 10.0 (0.39)         | 1.0 (0.04) | 2.1 (0.08) |                      |
| CN007506 | 0.75      | 20-19 | 6.0 (0.24)          | 1.2 (0.05) | 2.3 (0.09) |                      |
| CN007508 | 0.75      | 20-19 | 8.0 (0.31)          | 1.2 (0.05) | 2.3 (0.09) |                      |
| CN007510 | 0.75      | 20-19 | 10.0 (0.39)         | 1.2 (0.05) | 2.3 (0.09) |                      |
| CN010006 | 1.00      | 18    | 6.0 (0.24)          | 1.4 (0.06) | 2.5 (0.10) |                      |
| CN010008 | 1.00      | 18    | 8.0 (0.31)          | 1.4 (0.06) | 2.5 (0.10) |                      |
| CN010010 | 1.00      | 18    | 10.0 (0.39)         | 1.4 (0.06) | 2.5 (0.10) |                      |
| CN010012 | 1.00      | 18    | 12.0 (0.47)         | 1.4 (0.06) | 2.5 (0.10) |                      |
| CN015007 | 1.50      | 16    | 7.0 (0.28)          | 1.7 (0.07) | 2.8 (0.11) |                      |
| CN015008 | 1.50      | 16    | 8.0 (0.31)          | 1.7 (0.07) | 2.8 (0.11) |                      |
| CN015010 | 1.50      | 16    | 10.0 (0.39)         | 1.7 (0.07) | 2.8 (0.11) |                      |
| CN015012 | 1.50      | 16    | 12.0 (0.47)         | 1.7 (0.07) | 2.8 (0.11) |                      |
| CN025007 | 2.50      | 14    | 7.0 (0.28)          | 2.2 (0.09) | 3.4 (0.13) |                      |
| CN025008 | 2.50      | 14    | 8.0 (0.31)          | 2.2 (0.09) | 3.4 (0.13) |                      |
| CN025010 | 2.50      | 14    | 10.0 (0.39)         | 2.2 (0.09) | 3.4 (0.13) |                      |
| CN025012 | 2.50      | 14    | 12.0 (0.47)         | 2.2 (0.09) | 3.4 (0.13) |                      |
| CN025018 | 2.50      | 14    | 18.0 (0.71)         | 2.2 (0.09) | 3.4 (0.13) |                      |
| CN040008 | 4.00      | 12    | 8.0 (0.31)          | 2.8 (0.11) | 4.0 (0.16) | GIT-516E1            |
| CN040009 | 4.00      | 12    | 9.0 (0.35)          | 2.8 (0.11) | 4.0 (0.16) |                      |
| CN040010 | 4.00      | 12    | 10.0 (0.39)         | 2.8 (0.11) | 4.0 (0.16) |                      |

Wire Termination  
Cord-End Terminals



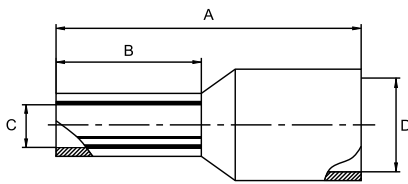
# UN-INSULATED CORD-END TERMINALS

| Part No. | Conductor |         | Dimension mm (inch) |             |             | Tools                             |
|----------|-----------|---------|---------------------|-------------|-------------|-----------------------------------|
|          | sq. mm.   | AWG     | B                   | C           | D           |                                   |
| CN040012 | 4.00      | 12      | 12.0 (0.47)         | 2.8 (0.11)  | 4.0 (0.16)  | GIT-516E1                         |
| CN040015 | 4.00      | 12      | 15.0 (0.59)         | 2.8 (0.11)  | 4.0 (0.16)  |                                   |
| CN040018 | 4.00      | 12      | 18.0 (0.71)         | 2.8 (0.11)  | 4.0 (0.16)  |                                   |
| CN060010 | 6.00      | 10      | 10.0 (0.39)         | 3.5 (0.14)  | 4.7 (0.19)  | GIT-516E2                         |
| CN060012 | 6.00      | 10      | 12.0 (0.47)         | 3.5 (0.14)  | 4.7 (0.19)  |                                   |
| CN060015 | 6.00      | 10      | 15.0 (0.59)         | 3.5 (0.14)  | 4.7 (0.19)  |                                   |
| CN060018 | 6.00      | 10      | 18.0 (0.71)         | 3.5 (0.14)  | 4.7 (0.19)  |                                   |
| CN100012 | 10.00     | 8       | 12.0 (0.47)         | 4.5 (0.18)  | 5.8 (0.23)  | GIT-516E2<br>GIT-516E3<br>GIT-518 |
| CN100015 | 10.00     | 8       | 15.0 (0.59)         | 4.5 (0.18)  | 5.8 (0.23)  |                                   |
| CN100018 | 10.00     | 8       | 18.0 (0.71)         | 4.5 (0.18)  | 5.8 (0.23)  |                                   |
| CN160012 | 16.00     | 6       | 12.0 (0.47)         | 5.8 (0.23)  | 7.5 (0.30)  |                                   |
| CN160015 | 16.00     | 6       | 15.0 (0.59)         | 5.8 (0.23)  | 7.5 (0.30)  |                                   |
| CN160018 | 16.00     | 6       | 18.0 (0.71)         | 5.8 (0.23)  | 7.5 (0.30)  |                                   |
| CN250015 | 25.00     | 4       | 15.0 (0.59)         | 7.3 (0.29)  | 9.5 (0.37)  | GIT-516E3<br>GIT-516E4<br>GIT-518 |
| CN250016 | 25.00     | 4       | 16.0 (0.63)         | 7.3 (0.29)  | 9.5 (0.37)  |                                   |
| CN250018 | 25.00     | 4       | 18.0 (0.71)         | 7.3 (0.29)  | 9.5 (0.37)  |                                   |
| CN250020 | 25.00     | 4       | 20.0 (0.79)         | 7.3 (0.29)  | 9.5 (0.37)  |                                   |
| CN250022 | 25.00     | 4       | 22.0 (0.87)         | 7.3 (0.29)  | 9.5 (0.37)  |                                   |
| CN350016 | 35.00     | 2       | 16.0 (0.63)         | 8.3 (0.33)  | 11.0 (0.43) | GIT-516E4<br>GIT-518              |
| CN350018 | 35.00     | 2       | 18.0 (0.71)         | 8.3 (0.33)  | 11.0 (0.43) |                                   |
| CN350020 | 35.00     | 2       | 20.0 (0.79)         | 8.3 (0.33)  | 11.0 (0.43) |                                   |
| CN350025 | 35.00     | 2       | 25.0 (0.98)         | 8.3 (0.33)  | 11.0 (0.43) |                                   |
| CN500018 | 50.00     | 1/0     | 18.0 (0.71)         | 10.3 (0.41) | 13.0 (0.51) |                                   |
| CN500020 | 50.00     | 1/0     | 20.0 (0.79)         | 10.3 (0.41) | 13.0 (0.51) |                                   |
| CN500022 | 50.00     | 1/0     | 22.0 (0.87)         | 10.3 (0.41) | 13.0 (0.51) |                                   |
| CN500025 | 50.00     | 1/0     | 25.0 (0.98)         | 10.3 (0.41) | 13.0 (0.51) |                                   |
| CN700022 | 70.00     | 2/0     | 22.0 (0.87)         | 13.5 (0.53) | 15.3 (0.60) | GIT-518                           |
| CN700025 | 70.00     | 2/0     | 25.0 (0.98)         | 13.5 (0.53) | 15.3 (0.60) |                                   |
| CN700032 | 70.00     | 2/0     | 32.0 (1.26)         | 13.5 (0.53) | 15.3 (0.60) |                                   |
| CN950025 | 95.00     | 3/0     | 25.0 (0.98)         | 14.7 (0.58) | 16.6 (0.65) |                                   |
| CN950032 | 95.00     | 3/0     | 32.0 (1.26)         | 14.7 (0.58) | 16.6 (0.65) |                                   |
| CN120030 | 120.00    | 4/0     | 30.0 (1.18)         | 16.7 (0.66) | 18.6 (0.73) |                                   |
| CN120032 | 120.00    | 4/0     | 32.0 (1.26)         | 16.7 (0.66) | 18.6 (0.73) |                                   |
| CN120034 | 120.00    | 4/0     | 34.0 (1.34)         | 16.7 (0.66) | 18.6 (0.73) |                                   |
| CN150032 | 150.00    | 250/300 | 32.0 (1.26)         | 19.5 (0.77) | 21.5 (0.85) |                                   |
| CN150038 | 150.00    | 250/300 | 38.0 (1.50)         | 19.5 (0.77) | 21.5 (0.85) |                                   |

\* DIN 46228/1

# CORD-END TERMINALS

- Insulation housing conforms to DIN color requirements
- Meets DIN standards for single wire containment
- Funnel entry for faster insertion and lower installed cost
- Designed with a seamless barrel to contain loose wire strands for superior terminations
- Ease of inserting wire into terminal block
- Suitable for limited space panel applications
- Multiple pin lengths available for a variety of terminal blocks
- Material: Copper tube with tin plated end sleeves with insulation Polyamide 6,6
- Temperature range: Up to 105°C (221°F)



| Color (1)           |            | Color (2)           |            | Color DIN46228/4      |       | Conductor sq. mm. (AWG) | Dimension mm (inch) |             |            |            | Tools                |
|---------------------|------------|---------------------|------------|-----------------------|-------|-------------------------|---------------------|-------------|------------|------------|----------------------|
| Part No. (W system) |            | Part No. (T system) |            | Part No. (DIN system) |       |                         | A                   | B           | C          | D          |                      |
| CE002506W           | Light Blue | CE002506T           | Violet     |                       |       | 0.25 (26-24)            | 10.0 (0.39)         | 6.0 (0.24)  | 0.8 (0.03) | 1.9 (0.07) | GIT-510              |
| CE002508W           | Light Blue | CE002508T           | Violet     |                       |       | 0.25 (26-24)            | 12.0 (0.47)         | 8.0 (0.31)  | 0.8 (0.03) | 1.9 (0.07) |                      |
| CE003406W           | Turquoise  | CE003406T           | Pink       |                       |       | 0.34 (24-22)            | 10.0 (0.39)         | 6.0 (0.24)  | 0.8 (0.03) | 1.9 (0.07) |                      |
| CE003408W           | Turquoise  | CE003408T           | Pink       |                       |       | 0.34 (24-22)            | 12.0 (0.47)         | 8.0 (0.31)  | 0.8 (0.03) | 1.9 (0.07) |                      |
| CE005006W           | Orange     | CE005006T           | White      | CE005006D             | White | 0.50 (22-20)            | 12.0 (0.47)         | 6.0 (0.24)  | 1.0 (0.04) | 2.6 (0.10) | GIT-510<br>GIT-516E1 |
| CE005008W           | Orange     | CE005008T           | White      | CE005008D             | White | 0.50 (22-20)            | 14.0 (0.55)         | 8.0 (0.31)  | 1.0 (0.04) | 2.6 (0.10) |                      |
| CE005010W           | Orange     | CE005010T           | White      | CE005010D             | White | 0.50 (22-20)            | 16.0 (0.63)         | 10.0 (0.39) | 1.0 (0.04) | 2.6 (0.10) |                      |
| CE007506W           | White      | CE007506T           | Light Blue | CE007506D             | Grey  | 0.75 (20-19)            | 12.0 (0.47)         | 6.0 (0.24)  | 1.2 (0.05) | 2.8 (0.11) |                      |
| CE007508W           | White      | CE007508T           | Light Blue | CE007508D             | Grey  | 0.75 (20-19)            | 14.0 (0.55)         | 8.0 (0.31)  | 1.2 (0.05) | 2.8 (0.11) |                      |
| CE007510W           | White      | CE007510T           | Light Blue | CE007510D             | Grey  | 0.75 (20-19)            | 16.0 (0.63)         | 10.0 (0.39) | 1.2 (0.05) | 2.8 (0.11) |                      |
| CE007512W           | White      | CE007512T           | Light Blue | CE007512D             | Grey  | 0.75 (20-19)            | 18.0 (0.71)         | 12.0 (0.47) | 1.2 (0.05) | 2.8 (0.11) |                      |
| CE010006W           | Yellow     | CE010006T           | Red        | CE010006D             | Red   | 1.00 (18)               | 12.0 (0.47)         | 6.0 (0.24)  | 1.4 (0.06) | 3.0 (0.12) |                      |
| CE010008W           | Yellow     | CE010008T           | Red        | CE010008D             | Red   | 1.00 (18)               | 14.0 (0.55)         | 8.0 (0.31)  | 1.4 (0.06) | 3.0 (0.12) |                      |
| CE010010W           | Yellow     | CE010010T           | Red        | CE010010D             | Red   | 1.00 (18)               | 16.0 (0.63)         | 10.0 (0.39) | 1.4 (0.06) | 3.0 (0.12) |                      |
| CE010012W           | Yellow     | CE010012T           | Red        | CE010012D             | Red   | 1.00 (18)               | 18.0 (0.71)         | 12.0 (0.47) | 1.4 (0.06) | 3.0 (0.12) |                      |
| CE015008W           | Red        | CE015008T           | Black      | CE015008D             | Black | 1.50 (16)               | 14.0 (0.55)         | 8.0 (0.31)  | 1.7 (0.07) | 3.5 (0.14) |                      |
| CE015010W           | Red        | CE015010T           | Black      | CE015010D             | Black | 1.50 (16)               | 16.0 (0.63)         | 10.0 (0.39) | 1.7 (0.07) | 3.5 (0.14) |                      |
| CE015012W           | Red        | CE015012T           | Black      | CE015012D             | Black | 1.50 (16)               | 18.0 (0.71)         | 12.0 (0.47) | 1.7 (0.07) | 3.5 (0.14) |                      |
| CE015018W           | Red        | CE015018T           | Black      | CE015018D             | Black | 1.50 (16)               | 24.0 (0.94)         | 18.0 (0.71) | 1.7 (0.07) | 3.5 (0.14) |                      |

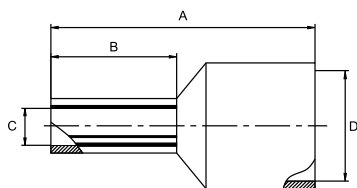
# CORD-END TERMINALS

| Color (1)           |        | Color (2)           |        | Color<br>DIN46228/4      |        | Conductor<br>sq. mm.<br>(AWG) | Dimension<br>mm (inch) |             |             |             | Tools                |
|---------------------|--------|---------------------|--------|--------------------------|--------|-------------------------------|------------------------|-------------|-------------|-------------|----------------------|
| Part No. (W system) |        | Part No. (T system) |        | Part No.<br>(DIN system) |        |                               | A                      | B           | C           | D           |                      |
| CE025008W           | Blue   | CE025008T           | Grey   | CE025008D                | Blue   | 2.50 (14)                     | 14.0 (0.55)            | 8.0 (0.31)  | 2.2 (0.09)  | 4.2 (0.17)  | GIT-510<br>GIT-516E1 |
| CE025010W           | Blue   | CE025010T           | Grey   | CE025010D                | Blue   | 2.50 (14)                     | 16.0 (0.63)            | 10.0 (0.39) | 2.2 (0.09)  | 4.2 (0.17)  |                      |
| CE025012W           | Blue   | CE025012T           | Grey   | CE025012D                | Blue   | 2.50 (14)                     | 18.0 (0.71)            | 12.0 (0.47) | 2.2 (0.09)  | 4.2 (0.17)  |                      |
| CE025018W           | Blue   | CE025018T           | Grey   | CE025018D                | Blue   | 2.50 (14)                     | 24.0 (0.94)            | 18.0 (0.71) | 2.2 (0.09)  | 4.2 (0.17)  |                      |
| CE040010W           | Grey   | CE040010T           | Orange | CE040010D                | Grey   | 4.00 (12)                     | 17.0 (0.67)            | 10.0 (0.39) | 2.8 (0.11)  | 4.8 (0.19)  | GIT-516E1            |
| CE040012W           | Grey   | CE040012T           | Orange | CE040012D                | Grey   | 4.00 (12)                     | 20.0 (0.79)            | 12.0 (0.47) | 2.8 (0.11)  | 4.8 (0.19)  |                      |
| CE040018W           | Grey   | CE040018T           | Orange | CE040018D                | Grey   | 4.00 (12)                     | 26.0 (1.02)            | 18.0 (0.71) | 2.8 (0.11)  | 4.8 (0.19)  |                      |
| CE060012W           | Black  | CE060012T           | Green  | CE060012D                | Yellow | 6.00 (10)                     | 20.0 (0.79)            | 12.0 (0.47) | 3.5 (0.14)  | 6.3 (0.25)  | GIT-516E2            |
| CE060018W           | Black  | CE060018T           | Green  | CE060018D                | Yellow | 6.00 (10)                     | 26.0 (1.02)            | 18.0 (0.71) | 3.5 (0.14)  | 6.3 (0.25)  |                      |
| CE100012W           | Ivory  | CE100012T           | Brown  | CE100012D                | Red    | 10.00 (8)                     | 22.0 (0.87)            | 12.0 (0.47) | 4.5 (0.18)  | 7.6 (0.30)  | GIT-516E2            |
| CE100018W           | Ivory  | CE100018T           | Brown  | CE100018D                | Red    | 10.00 (8)                     | 28.0 (1.10)            | 18.0 (0.71) | 4.5 (0.18)  | 7.6 (0.30)  |                      |
| CE160012W           | Green  | CE160012T           | Ivory  | CE160012D                | Blue   | 16.00 (6)                     | 22.0 (0.87)            | 12.0 (0.47) | 5.8 (0.23)  | 8.8 (0.35)  | GIT-516E3<br>GIT-518 |
| CE160018W           | Green  | CE160018T           | Ivory  | CE160018D                | Blue   | 16.00 (6)                     | 28.0 (1.10)            | 18.0 (0.71) | 5.8 (0.23)  | 8.8 (0.35)  |                      |
| CE250016W           | Brown  | CE250016T           | Black  | CE250016D                | Yellow | 25.00 (4)                     | 30.0 (1.18)            | 16.0 (0.63) | 7.3 (0.29)  | 11.2 (0.44) | GIT-516E3            |
| CE250018W           | Brown  | CE250018T           | Black  | CE250018D                | Yellow | 25.00 (4)                     | 32.0 (1.26)            | 18.0 (0.71) | 7.3 (0.29)  | 11.2 (0.44) | GIT-516E4            |
| CE250022W           | Brown  | CE250022T           | Black  | CE250022D                | Yellow | 25.00 (4)                     | 36.0 (1.42)            | 22.0 (0.87) | 7.3 (0.29)  | 11.2 (0.44) | GIT-518              |
| CE350016W           | Beige  | CE350016T           | Red    | CE350016D                | Red    | 35.00 (2)                     | 30.0 (1.18)            | 16.0 (0.63) | 8.3 (0.33)  | 12.7 (0.50) | GIT-516E4<br>GIT-518 |
| CE350018W           | Beige  | CE350018T           | Red    | CE350018D                | Red    | 35.00 (2)                     | 32.0 (1.26)            | 18.0 (0.71) | 8.3 (0.33)  | 12.7 (0.50) |                      |
| CE350025W           | Beige  | CE350025T           | Red    | CE350025D                | Red    | 35.00 (2)                     | 39.0 (1.54)            | 25.0 (0.98) | 8.3 (0.33)  | 12.7 (0.50) |                      |
| CE500020W           | Olive  | CE500020T           | Blue   | CE500020D                | Blue   | 50.00 (1/0)                   | 36.0 (1.42)            | 20.0 (0.79) | 10.3 (0.41) | 15.0 (0.59) | GIT-518              |
| CE500025W           | Olive  | CE500025T           | Blue   | CE500025D                | Blue   | 50.00 (1/0)                   | 40.0 (1.57)            | 25.0 (0.98) | 10.3 (0.41) | 15.0 (0.59) |                      |
| CE700021W           | Yellow | CE700021T           | Yellow | CE700021D                | Yellow | 70.00 (2/0)                   | 37.0 (1.46)            | 21.0 (0.83) | 13.5 (0.53) | 16.0 (0.63) | GIT-518              |
| CE950025W           | Red    | CE950025T           | Red    | CE950025D                | Red    | 95.00 (3/0)                   | 44.0 (1.73)            | 25.0 (0.98) | 14.7 (0.58) | 18.0 (0.71) |                      |
| CE120027W           | Blue   | CE120027T           | Blue   | CE120027D                | Blue   | 120.00 (4/0)                  | 48.0 (1.89)            | 27.0 (1.06) | 16.7 (0.66) | 20.0 (0.79) |                      |
| CE150032W           | Yellow | CE150032T           | Yellow | CE150032D                | Yellow | 150.00<br>(250/300)           | 58.0 (2.28)            | 32.0 (1.26) | 19.5 (0.77) | 23.0 (0.91) |                      |

\* DIN 46228/4

# TWIN CORD-END TERMINALS

- Meets DIN standards for twin wire containment
- Insulation housing conforms to DIN color requirements
- Funnel entry for faster insertion and lower installed cost
- Designed with a seamless barrel to contain loose wire strands for superior terminations
- Ease of inserting wire into terminal block
- Suitable for limited space panel applications
- Multiple pin lengths available for a variety of terminal blocks
- Material: Copper tube with tin plated end sleeves with insulation Polyamide 6,6
- Temperature range: Up to 105°C (221°F)

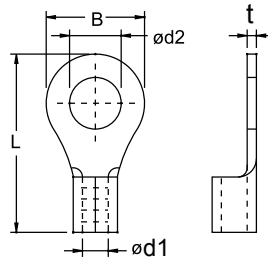


| Color (1)              |        | Color (2)              |        | Color<br>DIN46228/4      |        | Conductor<br>sq. mm.<br>(AWG) | Dimension<br>mm (inch) |             |            |             | Tools                             |
|------------------------|--------|------------------------|--------|--------------------------|--------|-------------------------------|------------------------|-------------|------------|-------------|-----------------------------------|
| Part No.<br>(W system) |        | Part No.<br>(T system) |        | Part No.<br>(DIN system) |        |                               | A                      | B           | C          | D           |                                   |
| CT205008W              | Orange | CT205008T              | White  | CT205008D                | White  | 2x0.50 (2x22-20)              | 15.0 (0.59)            | 8.0 (0.31)  | 1.5 (0.06) | 4.7 (0.19)  | GIT-510<br>GIT-516E1              |
| CT207508W              | White  | CT207508T              | Blue   | CT207508D                | Grey   | 2x0.75 (2x20-19)              | 15.0 (0.59)            | 8.0 (0.31)  | 1.8 (0.07) | 5.0 (0.20)  |                                   |
| CT207510W              | White  | CT207510T              | Blue   | CT207510D                | Grey   | 2x0.75 (2x20-19)              | 17.0 (0.67)            | 10.0 (0.39) | 1.8 (0.07) | 5.0 (0.20)  |                                   |
| CT210008W              | Yellow | CT210008T              | Red    | CT210008D                | Red    | 2x1.00 (2x18)                 | 15.0 (0.59)            | 8.0 (0.31)  | 2.1 (0.08) | 5.4 (0.21)  |                                   |
| CT210010W              | Yellow | CT210010T              | Red    | CT210010D                | Red    | 2x1.00 (2x18)                 | 17.0 (0.67)            | 10.0 (0.39) | 2.1 (0.08) | 5.4 (0.21)  |                                   |
| CT215008W              | Red    | CT215008T              | Black  | CT215008D                | Black  | 2x1.50 (2x16)                 | 16.0 (0.63)            | 8.0 (0.31)  | 2.3 (0.09) | 6.6 (0.26)  |                                   |
| CT215012W              | Red    | CT215012T              | Black  | CT215012D                | Black  | 2x1.50 (2x16)                 | 20.0 (0.79)            | 12.0 (0.47) | 2.3 (0.09) | 6.6 (0.26)  |                                   |
| CT225010W              | Blue   | CT225010T              | Grey   | CT225010D                | Blue   | 2x2.50 (2x14)                 | 18.5 (0.73)            | 10.0 (0.39) | 2.8 (0.11) | 7.8 (0.31)  | GIT-516E1                         |
| CT225013W              | Blue   | CT225013T              | Grey   | CT225013D                | Blue   | 2x2.50 (2x14)                 | 21.5 (0.85)            | 13.0 (0.51) | 2.8 (0.11) | 7.8 (0.31)  |                                   |
| CT240012W              | Grey   | CT240012T              | Orange | CT240012D                | Grey   | 2x4.00 (2x12)                 | 23.0 (0.91)            | 12.0 (0.47) | 3.7 (0.15) | 8.8 (0.35)  | GIT-516E2                         |
| CT260014W              | Black  | CT260014T              | Green  | CT260014D                | Yellow | 2x6.00 (2x10)                 | 26.0 (1.02)            | 14.0 (0.55) | 4.8 (0.19) | 10.0 (0.39) | GIT-516E2<br>GIT-516E3<br>GIT-518 |
| CT210014W              | Ivory  | CT210014T              | Brown  | CT210014D                | Red    | 2x10.00 (2x8)                 | 26.5 (1.04)            | 14.0 (0.55) | 6.4 (0.25) | 12.8 (0.50) |                                   |
| CT216014W              | Green  | CT216014T              | Ivory  | CT216014D                | Blue   | 2x16.00 (2x6)                 | 31.5 (1.24)            | 14.0 (0.55) | 8.3 (0.33) | 18.6 (0.73) | GIT-516E3<br>GIT-516E4<br>GIT-518 |

\* DIN 46228/4

# NON-INSULATED RING TERMINALS

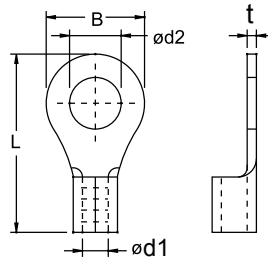
- Brazed seam protects terminal barrel from splitting during the crimping process
- Material: Copper



| Part No.    | Wire Range |       | Dimension mm (inch) |             |             |             |            | Stud Size |       |
|-------------|------------|-------|---------------------|-------------|-------------|-------------|------------|-----------|-------|
|             | sq. mm.    | AWG   | d1                  | d2          | B           | L           | t          | mm        | inch  |
| R1.25-3B    | 0.5-1.5    | 22-16 | 1.9 (0.07)          | 3.2 (0.13)  | 5.5 (0.22)  | 11.5 (0.45) | 0.7 (0.03) | M3        | #5    |
| R1.25-3.5B  | 0.5-1.5    | 22-16 | 1.9 (0.07)          | 3.7 (0.15)  | 5.5 (0.22)  | 11.5 (0.45) | 0.7 (0.03) | M3.5      | #6    |
| R1.25-3.5LB | 0.5-1.5    | 22-16 | 1.9 (0.07)          | 3.7 (0.15)  | 6.6 (0.26)  | 14.4 (0.57) | 0.7 (0.03) | M3.5      | #6    |
| R1.25-4B    | 0.5-1.5    | 22-16 | 1.9 (0.07)          | 4.3 (0.17)  | 8.0 (0.31)  | 15.8 (0.62) | 0.7 (0.03) | M4        | #8    |
| R1.25-4MB   | 0.5-1.5    | 22-16 | 1.9 (0.07)          | 4.3 (0.17)  | 6.6 (0.26)  | 14.4 (0.57) | 0.7 (0.03) | M4        | #8    |
| R1.25-5B    | 0.5-1.5    | 22-16 | 1.9 (0.07)          | 5.3 (0.21)  | 8.0 (0.31)  | 15.8 (0.62) | 0.7 (0.03) | M5        | #10   |
| R1.25-6B    | 0.5-1.5    | 22-16 | 1.9 (0.07)          | 6.4 (0.25)  | 11.6 (0.46) | 21.5 (0.85) | 0.7 (0.03) | M6        | 1/4"  |
| R1.25-8B    | 0.5-1.5    | 22-16 | 1.9 (0.07)          | 8.4 (0.33)  | 11.6 (0.46) | 21.5 (0.85) | 0.7 (0.03) | M8        | 5/16" |
| R1.25-10B   | 0.5-1.5    | 22-16 | 1.9 (0.07)          | 10.5 (0.41) | 13.7 (0.54) | 25.5 (1.00) | 0.7 (0.03) | M10       | 3/8"  |
| R1.25-12B   | 0.5-1.5    | 22-16 | 1.9 (0.07)          | 13.0 (0.51) | 19.0 (0.75) | 28.7 (1.13) | 0.7 (0.03) | M12       | 1/2"  |
| R2-3MB      | 1.5-2.5    | 16-14 | 2.5 (0.10)          | 3.2 (0.13)  | 6.6 (0.26)  | 14.4 (0.57) | 0.8 (0.03) | M3        | #5    |
| R2-3B       | 1.5-2.5    | 16-14 | 2.5 (0.10)          | 3.2 (0.13)  | 8.5 (0.33)  | 16.8 (0.66) | 0.8 (0.03) | M3        | #5    |
| R2-3.5B     | 1.5-2.5    | 16-14 | 2.5 (0.10)          | 3.7 (0.15)  | 6.6 (0.26)  | 14.4 (0.57) | 0.8 (0.03) | M3.5      | #6    |
| R2-3.5LB    | 1.5-2.5    | 16-14 | 2.5 (0.10)          | 3.7 (0.15)  | 8.5 (0.33)  | 16.8 (0.66) | 0.8 (0.03) | M3.5      | #6    |
| R2-4B       | 1.5-2.5    | 16-14 | 2.5 (0.10)          | 4.3 (0.17)  | 8.5 (0.33)  | 16.8 (0.66) | 0.8 (0.03) | M4        | #8    |
| R2-4MB      | 1.5-2.5    | 16-14 | 2.5 (0.10)          | 4.3 (0.17)  | 6.6 (0.26)  | 14.4 (0.57) | 0.8 (0.03) | M4        | #8    |
| R2-5MB      | 1.5-2.5    | 16-14 | 2.5 (0.10)          | 5.3 (0.21)  | 8.5 (0.33)  | 16.8 (0.66) | 0.8 (0.03) | M5        | #10   |
| R2-5B       | 1.5-2.5    | 16-14 | 2.5 (0.10)          | 5.3 (0.21)  | 9.5 (0.37)  | 16.7 (0.66) | 0.8 (0.03) | M5        | #10   |
| R2-6B       | 1.5-2.5    | 16-14 | 2.5 (0.10)          | 6.4 (0.25)  | 12.0 (0.47) | 21.2 (0.83) | 0.8 (0.03) | M6        | 1/4"  |
| R2-8B       | 1.5-2.5    | 16-14 | 2.5 (0.10)          | 8.4 (0.33)  | 12.0 (0.47) | 21.2 (0.83) | 0.8 (0.03) | M8        | 5/16" |
| R2-10B      | 1.5-2.5    | 16-14 | 2.5 (0.10)          | 10.5 (0.41) | 13.7 (0.54) | 25.5 (1.00) | 0.8 (0.03) | M10       | 3/8"  |
| R2-12B      | 1.5-2.5    | 16-14 | 2.5 (0.10)          | 13.0 (0.51) | 19.0 (0.75) | 28.7 (1.13) | 0.8 (0.03) | M12       | 1/2"  |
| R3.5-4B     | 2.5-4.0    | 14-12 | 3.4 (0.13)          | 4.3 (0.17)  | 9.5 (0.37)  | 19.5 (0.77) | 0.8 (0.03) | M4        | #8    |
| R3.5-5B     | 2.5-4.0    | 14-12 | 3.4 (0.13)          | 5.3 (0.21)  | 9.5 (0.37)  | 19.5 (0.77) | 0.8 (0.03) | M5        | #10   |
| R5.5-3B     | 4.0-6.0    | 12-10 | 3.6 (0.14)          | 3.2 (0.13)  | 9.5 (0.37)  | 19.5 (0.77) | 1.0 (0.04) | M3        | #5    |
| R5.5-3.5B   | 4.0-6.0    | 12-10 | 3.6 (0.14)          | 3.7 (0.15)  | 9.5 (0.37)  | 19.5 (0.77) | 1.0 (0.04) | M3.5      | #6    |
| R5.5-4SB    | 4.0-6.0    | 12-10 | 3.6 (0.14)          | 4.3 (0.17)  | 7.4 (0.29)  | 18.5 (0.73) | 1.0 (0.04) | M4        | #8    |
| R5.5-4B     | 4.0-6.0    | 12-10 | 3.6 (0.14)          | 4.3 (0.17)  | 9.5 (0.37)  | 19.5 (0.77) | 1.0 (0.04) | M4        | #8    |
| R5.5-5B     | 4.0-6.0    | 12-10 | 3.6 (0.14)          | 5.3 (0.21)  | 9.5 (0.37)  | 19.5 (0.77) | 1.0 (0.04) | M5        | #10   |
| R5.5-5SB    | 4.0-6.0    | 12-10 | 3.6 (0.14)          | 5.3 (0.21)  | 7.4 (0.29)  | 18.5 (0.73) | 1.0 (0.04) | M5        | #10   |
| R5.5-6B     | 4.0-6.0    | 12-10 | 3.6 (0.14)          | 6.4 (0.25)  | 12.0 (0.47) | 25.5 (1.00) | 1.0 (0.04) | M6        | 1/4"  |
| R5.5-8B     | 4.0-6.0    | 12-10 | 3.6 (0.14)          | 8.4 (0.33)  | 15.0 (0.59) | 27.7 (1.09) | 1.0 (0.04) | M8        | 5/16" |
| R5.5-10B    | 4.0-6.0    | 12-10 | 3.6 (0.14)          | 10.5 (0.41) | 15.0 (0.59) | 27.7 (1.09) | 1.0 (0.04) | M10       | 3/8"  |
| R5.5-12B    | 4.0-6.0    | 12-10 | 3.6 (0.14)          | 13.0 (0.51) | 19.2 (0.76) | 32.4 (1.28) | 1.0 (0.04) | M12       | 1/2"  |
| R8-4B       | 8.0        | 8     | 4.5 (0.18)          | 4.4 (0.17)  | 12.0 (0.47) | 23.8 (0.94) | 1.2 (0.05) | M4        | #8    |
| R8-S4B      | 8.0        | 8     | 4.5 (0.18)          | 4.4 (0.17)  | 9.5 (0.37)  | 22.5 (0.89) | 1.2 (0.05) | M4        | #8    |
| R8-5B       | 8.0        | 8     | 4.8 (0.19)          | 5.4 (0.21)  | 12.0 (0.47) | 22.7 (0.89) | 1.2 (0.05) | M5        | #10   |
| R8-S5B      | 8.0        | 8     | 4.5 (0.18)          | 5.4 (0.21)  | 9.5 (0.37)  | 22.5 (0.89) | 1.2 (0.05) | M5        | #10   |
| R8-L5B      | 8.0        | 8     | 4.5 (0.18)          | 5.4 (0.21)  | 15.0 (0.59) | 29.6 (1.17) | 1.2 (0.05) | M5        | #10   |
| R8-6B       | 8.0        | 8     | 4.8 (0.19)          | 6.4 (0.25)  | 12.0 (0.47) | 22.7 (0.89) | 1.2 (0.05) | M6        | 1/4"  |
| R8-S6B      | 8.0        | 8     | 4.5 (0.18)          | 6.6 (0.26)  | 9.5 (0.37)  | 22.5 (0.89) | 1.2 (0.05) | M6        | 1/4"  |
| R8-L6B      | 8.0        | 8     | 4.5 (0.18)          | 6.6 (0.26)  | 15.0 (0.59) | 29.6 (1.17) | 1.2 (0.05) | M6        | 1/4"  |
| R8-8B       | 8.0        | 8     | 4.8 (0.19)          | 8.6 (0.34)  | 14.0 (0.55) | 27.0 (1.06) | 1.2 (0.05) | M8        | 5/16" |
| R8-10B      | 8.0        | 8     | 4.5 (0.18)          | 10.7 (0.42) | 15.0 (0.59) | 29.6 (1.17) | 1.2 (0.05) | M10       | 3/8"  |
| R8-12B      | 8.0        | 8     | 4.5 (0.18)          | 13.2 (0.52) | 20.0 (0.79) | 33.5 (1.32) | 1.2 (0.05) | M12       | 1/2"  |
| R8-14B      | 8.0        | 8     | 4.5 (0.18)          | 15.2 (0.60) | 32.0 (1.26) | 50.0 (1.97) | 1.2 (0.05) | M14       | 9/16" |
| R8-16B      | 8.0        | 8     | 4.5 (0.18)          | 17.2 (0.68) | 32.0 (1.26) | 50.0 (1.97) | 1.2 (0.05) | M16       | 5/8"  |
| R8-18B      | 8.0        | 8     | 4.5 (0.18)          | 19.2 (0.76) | 32.0 (1.26) | 50.0 (1.97) | 1.2 (0.05) | M18       | 3/4"  |
| R8-20B      | 8.0        | 8     | 4.5 (0.18)          | 21.2 (0.83) | 32.0 (1.26) | 50.0 (1.97) | 1.2 (0.05) | M20       | 3/4"  |

# NON-INSULATED RING TERMINALS

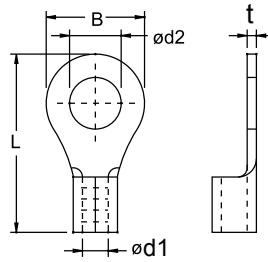
- Brazed seam protects terminal barrel from splitting during the crimping process
- Material: Copper



| Part No. | Wire Range |     | Dimension mm (inch) |             |             |             |            | Stud Size |       |
|----------|------------|-----|---------------------|-------------|-------------|-------------|------------|-----------|-------|
|          | sq. mm.    | AWG | d1                  | d2          | B           | L           | t          | mm        | inch  |
| R14-5B   | 14.0       | 6   | 5.8 (0.23)          | 5.4 (0.21)  | 12.0 (0.47) | 29.5 (1.16) | 1.5 (0.06) | M5        | #10   |
| R14-S5B  | 14.0       | 6   | 5.8 (0.23)          | 5.4 (0.21)  | 10.0 (0.39) | 28.5 (1.12) | 1.5 (0.06) | M5        | #10   |
| R14-6B   | 14.0       | 6   | 5.8 (0.23)          | 6.6 (0.26)  | 12.0 (0.47) | 29.5 (1.16) | 1.5 (0.06) | M6        | 1/4"  |
| R14-S6B  | 14.0       | 6   | 5.8 (0.23)          | 6.6 (0.26)  | 10.0 (0.39) | 28.5 (1.12) | 1.5 (0.06) | M6        | 1/4"  |
| R14-8B   | 14.0       | 6   | 5.8 (0.23)          | 8.6 (0.34)  | 16.0 (0.63) | 32.8 (1.29) | 1.5 (0.06) | M8        | 5/16" |
| R14-S8B  | 14.0       | 6   | 5.8 (0.23)          | 8.6 (0.34)  | 12.0 (0.47) | 29.5 (1.16) | 1.5 (0.06) | M8        | 5/16" |
| R14-10B  | 14.0       | 6   | 5.8 (0.23)          | 10.7 (0.42) | 16.0 (0.63) | 32.8 (1.29) | 1.5 (0.06) | M10       | 3/8"  |
| R14-12B  | 14.0       | 6   | 5.8 (0.23)          | 13.2 (0.52) | 22.0 (0.87) | 39.3 (1.55) | 1.5 (0.06) | M12       | 1/2"  |
| R14-14B  | 14.0       | 6   | 5.8 (0.23)          | 15.2 (0.60) | 30.0 (1.18) | 49.0 (1.93) | 1.5 (0.06) | M14       | 9/16" |
| R14-16B  | 14.0       | 6   | 5.8 (0.23)          | 17.2 (0.68) | 30.0 (1.18) | 49.0 (1.93) | 1.5 (0.06) | M16       | 5/8"  |
| R14-18B  | 14.0       | 6   | 5.8 (0.23)          | 19.2 (0.76) | 30.0 (1.18) | 49.0 (1.93) | 1.5 (0.06) | M18       | 3/4"  |
| R14-20B  | 14.0       | 6   | 5.8 (0.23)          | 21.2 (0.83) | 30.0 (1.18) | 49.0 (1.93) | 1.5 (0.06) | M20       | 3/4"  |
| R22-5B   | 22.0       | 4   | 7.7 (0.30)          | 5.4 (0.21)  | 12.0 (0.47) | 30.9 (1.22) | 1.5 (0.06) | M5        | #10   |
| R22-S6B  | 22.0       | 4   | 7.7 (0.30)          | 6.6 (0.26)  | 12.0 (0.47) | 30.9 (1.22) | 1.8 (0.07) | M6        | 1/4"  |
| R22-S8B  | 22.0       | 4   | 7.7 (0.30)          | 8.6 (0.34)  | 12.0 (0.47) | 30.9 (1.22) | 1.8 (0.07) | M8        | 5/16" |
| R22-6B   | 22.0       | 4   | 7.7 (0.30)          | 6.6 (0.26)  | 16.5 (0.65) | 33.1 (1.30) | 1.8 (0.07) | M6        | 1/4"  |
| R22-8B   | 22.0       | 4   | 7.7 (0.30)          | 8.6 (0.34)  | 16.5 (0.65) | 33.1 (1.30) | 1.8 (0.07) | M8        | 5/16" |
| R22-10B  | 22.0       | 4   | 7.7 (0.30)          | 10.7 (0.42) | 17.5 (0.69) | 35.9 (1.41) | 1.8 (0.07) | M10       | 3/8"  |
| R22-12B  | 22.0       | 4   | 7.7 (0.30)          | 13.2 (0.52) | 22.0 (0.87) | 42.5 (1.67) | 1.8 (0.07) | M12       | 1/2"  |
| R22-14B  | 22.0       | 4   | 7.7 (0.30)          | 15.2 (0.60) | 30.0 (1.18) | 51.5 (2.03) | 1.8 (0.07) | M14       | 9/16" |
| R22-16B  | 22.0       | 4   | 7.7 (0.30)          | 17.2 (0.68) | 30.0 (1.18) | 51.5 (2.03) | 1.8 (0.07) | M16       | 5/8"  |
| R22-18B  | 22.0       | 4   | 7.7 (0.30)          | 19.2 (0.76) | 30.0 (1.18) | 51.5 (2.03) | 1.8 (0.07) | M18       | 3/4"  |
| R22-20B  | 22.0       | 4   | 7.7 (0.30)          | 21.2 (0.83) | 30.0 (1.18) | 51.5 (2.03) | 1.8 (0.07) | M20       | 3/4"  |
| R38-S5B  | 38.0       | 2   | 9.4 (0.37)          | 5.4 (0.21)  | 15.5 (0.61) | 36.7 (1.44) | 1.8 (0.07) | M5        | #10   |
| R38-S6B  | 38.0       | 2   | 9.4 (0.37)          | 6.6 (0.26)  | 15.5 (0.61) | 36.7 (1.44) | 1.8 (0.07) | M6        | 1/4"  |
| R38-S8B  | 38.0       | 2   | 9.4 (0.37)          | 8.6 (0.34)  | 15.5 (0.61) | 36.7 (1.44) | 1.8 (0.07) | M8        | 5/16" |
| R38-S10B | 38.0       | 2   | 9.4 (0.37)          | 10.7 (0.42) | 15.5 (0.61) | 36.7 (1.44) | 1.8 (0.07) | M10       | 3/8"  |
| R38-5B   | 38.0       | 2   | 9.4 (0.37)          | 5.4 (0.21)  | 22.0 (0.87) | 42.5 (1.67) | 1.8 (0.07) | M5        | #10   |
| R38-6B   | 38.0       | 2   | 9.4 (0.37)          | 6.6 (0.26)  | 22.0 (0.87) | 42.5 (1.67) | 1.8 (0.07) | M6        | 1/4"  |
| R38-8B   | 38.0       | 2   | 9.4 (0.37)          | 8.6 (0.34)  | 22.0 (0.87) | 42.5 (1.67) | 1.8 (0.07) | M8        | 5/16" |
| R38-10B  | 38.0       | 2   | 9.4 (0.37)          | 10.7 (0.42) | 22.0 (0.87) | 42.5 (1.67) | 1.8 (0.07) | M10       | 3/8"  |
| R38-12B  | 38.0       | 2   | 9.4 (0.37)          | 13.2 (0.52) | 22.0 (0.87) | 42.5 (1.67) | 1.8 (0.07) | M12       | 1/2"  |
| R38-14B  | 38.0       | 2   | 9.4 (0.37)          | 15.2 (0.60) | 30.0 (1.18) | 52.0 (2.05) | 1.8 (0.07) | M14       | 9/16" |
| R38-16B  | 38.0       | 2   | 9.4 (0.37)          | 17.2 (0.68) | 30.0 (1.18) | 52.0 (2.05) | 1.8 (0.07) | M16       | 5/8"  |
| R38-18B  | 38.0       | 2   | 9.4 (0.37)          | 19.2 (0.76) | 30.0 (1.18) | 52.0 (2.05) | 1.8 (0.07) | M18       | 3/4"  |
| R38-20B  | 38.0       | 2   | 9.4 (0.37)          | 21.2 (0.83) | 30.0 (1.18) | 52.0 (2.05) | 1.8 (0.07) | M20       | 3/4"  |
| R60-S6B  | 60.0       | 1/0 | 11.4 (0.45)         | 6.6 (0.26)  | 19.0 (0.75) | 47.5 (1.87) | 1.9 (0.07) | M6        | 1/4"  |
| R60-S8B  | 60.0       | 1/0 | 11.4 (0.45)         | 8.6 (0.34)  | 19.0 (0.75) | 47.5 (1.87) | 1.9 (0.07) | M8        | 5/16" |
| R60-S10B | 60.0       | 1/0 | 11.4 (0.45)         | 10.7 (0.42) | 19.0 (0.75) | 47.5 (1.87) | 1.9 (0.07) | M10       | 3/8"  |
| R60-6B   | 60.0       | 1/0 | 11.4 (0.45)         | 6.6 (0.26)  | 22.0 (0.87) | 49.0 (1.93) | 1.9 (0.07) | M6        | 1/4"  |
| R60-8B   | 60.0       | 1/0 | 11.4 (0.45)         | 8.6 (0.34)  | 22.0 (0.87) | 49.0 (1.93) | 1.9 (0.07) | M8        | 5/16" |
| R60-10B  | 60.0       | 1/0 | 11.4 (0.45)         | 10.7 (0.42) | 22.0 (0.87) | 49.0 (1.93) | 1.9 (0.07) | M10       | 3/8"  |
| R60-12B  | 60.0       | 1/0 | 11.4 (0.45)         | 13.2 (0.52) | 22.0 (0.87) | 49.0 (1.93) | 1.9 (0.07) | M12       | 1/2"  |
| R60-14B  | 60.0       | 1/0 | 11.4 (0.45)         | 15.2 (0.60) | 32.0 (1.26) | 57.5 (2.26) | 1.9 (0.07) | M14       | 9/16" |
| R60-16B  | 60.0       | 1/0 | 11.4 (0.45)         | 17.2 (0.68) | 32.0 (1.26) | 57.5 (2.26) | 1.9 (0.07) | M16       | 5/8"  |
| R60-18B  | 60.0       | 1/0 | 11.4 (0.45)         | 19.2 (0.76) | 32.0 (1.26) | 57.5 (2.26) | 1.9 (0.07) | M18       | 3/4"  |
| R60-20B  | 60.0       | 1/0 | 11.4 (0.45)         | 21.2 (0.83) | 32.0 (1.26) | 57.5 (2.26) | 1.9 (0.07) | M20       | 3/4"  |
| R60-22B  | 60.0       | 1/0 | 11.4 (0.45)         | 23.2 (0.91) | 32.0 (1.26) | 57.5 (2.26) | 1.9 (0.07) | M22       | 7/8"  |

# NON-INSULATED RING TERMINALS

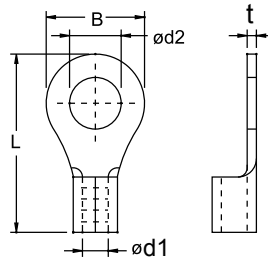
- Brazed seam protects terminal barrel from splitting during the crimping process
- Material: Copper



| Part No.  | Wire Range |         | Dimension mm (inch) |             |             |             |            | Stud Size |       |
|-----------|------------|---------|---------------------|-------------|-------------|-------------|------------|-----------|-------|
|           | sq. mm.    | AWG     | d1                  | d2          | B           | L           | t          | mm        | inch  |
| R70-6B    | 70.0       | 2/0     | 13.5 (0.53)         | 6.6 (0.26)  | 27.0 (1.06) | 49.0 (1.93) | 2.0 (0.08) | M6        | 1/4"  |
| R70-8B    | 70.0       | 2/0     | 13.5 (0.53)         | 8.6 (0.34)  | 27.0 (1.06) | 49.0 (1.93) | 2.0 (0.08) | M8        | 5/16" |
| R70-10B   | 70.0       | 2/0     | 13.5 (0.53)         | 10.7 (0.42) | 27.0 (1.06) | 49.0 (1.93) | 2.0 (0.08) | M10       | 3/8"  |
| R70-12B   | 70.0       | 2/0     | 13.5 (0.53)         | 13.2 (0.52) | 27.0 (1.06) | 49.0 (1.93) | 2.0 (0.08) | M12       | 1/2"  |
| R70-14B   | 70.0       | 2/0     | 13.5 (0.53)         | 15.2 (0.60) | 27.0 (1.06) | 53.5 (2.11) | 2.0 (0.08) | M14       | 9/16" |
| R70-16B   | 70.0       | 2/0     | 13.5 (0.53)         | 17.2 (0.68) | 27.0 (1.06) | 53.5 (2.11) | 2.0 (0.08) | M16       | 5/8"  |
| R80-6B    | 80.0       | 3/0     | 14.5 (0.57)         | 6.6 (0.26)  | 27.0 (1.06) | 53.0 (2.09) | 2.3 (0.09) | M6        | 1/4"  |
| R80-8B    | 80.0       | 3/0     | 14.5 (0.57)         | 8.6 (0.34)  | 27.0 (1.06) | 53.0 (2.09) | 2.3 (0.09) | M8        | 5/16" |
| R80-10B   | 80.0       | 3/0     | 14.5 (0.57)         | 10.7 (0.42) | 27.0 (1.06) | 53.0 (2.09) | 2.3 (0.09) | M10       | 3/8"  |
| R80-12B   | 80.0       | 3/0     | 14.5 (0.57)         | 13.2 (0.52) | 27.0 (1.06) | 53.0 (2.09) | 2.3 (0.09) | M12       | 1/2"  |
| R80-S14B  | 80.0       | 3/0     | 14.5 (0.57)         | 15.2 (0.60) | 27.0 (1.06) | 53.0 (2.09) | 2.3 (0.09) | M14       | 9/16" |
| R80-L6B   | 80.0       | 3/0     | 14.5 (0.57)         | 6.6 (0.26)  | 32.0 (1.26) | 63.0 (2.48) | 2.3 (0.09) | M6        | 1/4"  |
| R80-L8B   | 80.0       | 3/0     | 14.5 (0.57)         | 8.6 (0.34)  | 32.0 (1.26) | 63.0 (2.48) | 2.3 (0.09) | M8        | 5/16" |
| R80-L10B  | 80.0       | 3/0     | 14.5 (0.57)         | 10.7 (0.42) | 32.0 (1.26) | 63.0 (2.48) | 2.3 (0.09) | M10       | 3/8"  |
| R80-L12B  | 80.0       | 3/0     | 14.5 (0.57)         | 13.2 (0.52) | 32.0 (1.26) | 63.0 (2.48) | 2.3 (0.09) | M12       | 1/2"  |
| R80-14B   | 80.0       | 3/0     | 14.5 (0.57)         | 15.2 (0.60) | 32.0 (1.26) | 63.0 (2.48) | 2.3 (0.09) | M14       | 9/16" |
| R80-16B   | 80.0       | 3/0     | 14.5 (0.57)         | 17.2 (0.68) | 32.0 (1.26) | 63.0 (2.48) | 2.3 (0.09) | M16       | 5/8"  |
| R80-18B   | 80.0       | 3/0     | 14.5 (0.57)         | 19.2 (0.76) | 32.0 (1.26) | 63.0 (2.48) | 2.3 (0.09) | M18       | 3/4"  |
| R80-20B   | 80.0       | 3/0     | 14.5 (0.57)         | 21.2 (0.83) | 32.0 (1.26) | 63.0 (2.48) | 2.3 (0.09) | M20       | 3/4"  |
| R80-22B   | 80.0       | 3/0     | 14.5 (0.57)         | 23.2 (0.91) | 32.0 (1.26) | 63.0 (2.48) | 2.3 (0.09) | M22       | 7/8"  |
| R100-6B   | 100.0      | 4/0     | 16.4 (0.65)         | 6.6 (0.26)  | 28.5 (1.12) | 55.5 (2.19) | 2.6 (0.10) | M6        | 1/4"  |
| R100-8B   | 100.0      | 4/0     | 16.4 (0.65)         | 8.6 (0.34)  | 28.5 (1.12) | 55.5 (2.19) | 2.6 (0.10) | M8        | 5/16" |
| R100-10B  | 100.0      | 4/0     | 16.4 (0.65)         | 10.7 (0.42) | 28.5 (1.12) | 55.5 (2.19) | 2.6 (0.10) | M10       | 3/8"  |
| R100-12B  | 100.0      | 4/0     | 16.4 (0.65)         | 13.2 (0.52) | 28.5 (1.12) | 55.5 (2.19) | 2.6 (0.10) | M12       | 1/2"  |
| R100-S14B | 100.0      | 4/0     | 16.4 (0.65)         | 15.2 (0.60) | 28.5 (1.12) | 55.5 (2.19) | 2.6 (0.10) | M14       | 9/16" |
| R100-L6B  | 100.0      | 4/0     | 16.4 (0.65)         | 6.6 (0.26)  | 32.0 (1.26) | 69.0 (2.72) | 2.6 (0.10) | M6        | 1/4"  |
| R100-L8B  | 100.0      | 4/0     | 16.4 (0.65)         | 8.6 (0.34)  | 32.0 (1.26) | 69.0 (2.72) | 2.6 (0.10) | M8        | 5/16" |
| R100-L10B | 100.0      | 4/0     | 16.4 (0.65)         | 10.7 (0.42) | 32.0 (1.26) | 69.0 (2.72) | 2.6 (0.10) | M10       | 3/8"  |
| R100-L12B | 100.0      | 4/0     | 16.4 (0.65)         | 13.2 (0.52) | 32.0 (1.26) | 69.0 (2.72) | 2.6 (0.10) | M12       | 1/2"  |
| R100-14B  | 100.0      | 4/0     | 16.4 (0.65)         | 15.2 (0.60) | 32.0 (1.26) | 69.0 (2.72) | 2.6 (0.10) | M14       | 9/16" |
| R100-16B  | 100.0      | 4/0     | 16.4 (0.65)         | 17.2 (0.68) | 32.0 (1.26) | 69.0 (2.72) | 2.6 (0.10) | M16       | 5/8"  |
| R100-18B  | 100.0      | 4/0     | 16.4 (0.65)         | 19.2 (0.76) | 32.0 (1.26) | 69.0 (2.72) | 2.6 (0.10) | M18       | 3/4"  |
| R100-20B  | 100.0      | 4/0     | 16.4 (0.65)         | 21.2 (0.83) | 32.0 (1.26) | 69.0 (2.72) | 2.6 (0.10) | M20       | 3/4"  |
| R100-22B  | 100.0      | 4/0     | 16.4 (0.65)         | 23.2 (0.91) | 32.0 (1.26) | 69.0 (2.72) | 2.6 (0.10) | M22       | 7/8"  |
| R150-6B   | 150.0      | 250/300 | 19.5 (0.77)         | 6.6 (0.26)  | 36.0 (1.42) | 67.0 (2.64) | 3.2 (0.13) | M6        | 1/4"  |
| R150-8B   | 150.0      | 250/300 | 19.5 (0.77)         | 8.6 (0.34)  | 36.0 (1.42) | 67.0 (2.64) | 3.2 (0.13) | M8        | 5/16" |
| R150-10B  | 150.0      | 250/300 | 19.5 (0.77)         | 10.7 (0.42) | 36.0 (1.42) | 67.0 (2.64) | 3.2 (0.13) | M10       | 3/8"  |
| R150-12B  | 150.0      | 250/300 | 19.5 (0.77)         | 13.2 (0.52) | 36.0 (1.42) | 67.0 (2.64) | 3.2 (0.13) | M12       | 1/2"  |
| R150-S14B | 150.0      | 250/300 | 19.5 (0.77)         | 15.2 (0.60) | 36.0 (1.42) | 67.0 (2.64) | 3.2 (0.13) | M14       | 9/16" |
| R150-S16B | 150.0      | 250/300 | 19.5 (0.77)         | 17.2 (0.68) | 36.0 (1.42) | 67.0 (2.64) | 3.2 (0.13) | M16       | 5/8"  |
| R150-L6B  | 150.0      | 250/300 | 19.5 (0.77)         | 6.6 (0.26)  | 36.0 (1.42) | 75.0 (2.95) | 3.2 (0.13) | M6        | 1/4"  |
| R150-L8B  | 150.0      | 250/300 | 19.5 (0.77)         | 8.6 (0.34)  | 36.0 (1.42) | 75.0 (2.95) | 3.2 (0.13) | M8        | 5/16" |
| R150-L10B | 150.0      | 250/300 | 19.5 (0.77)         | 10.7 (0.42) | 36.0 (1.42) | 75.0 (2.95) | 3.2 (0.13) | M10       | 3/8"  |
| R150-L12B | 150.0      | 250/300 | 19.5 (0.77)         | 13.2 (0.52) | 36.0 (1.42) | 75.0 (2.95) | 3.2 (0.13) | M12       | 1/2"  |
| R150-14B  | 150.0      | 250/300 | 19.5 (0.77)         | 15.2 (0.60) | 36.0 (1.42) | 75.0 (2.95) | 3.2 (0.13) | M14       | 9/16" |
| R150-16B  | 150.0      | 250/300 | 19.5 (0.77)         | 17.2 (0.68) | 36.0 (1.42) | 75.0 (2.95) | 3.2 (0.13) | M16       | 5/8"  |
| R150-18B  | 150.0      | 250/300 | 19.5 (0.77)         | 19.2 (0.76) | 36.0 (1.42) | 75.0 (2.95) | 3.2 (0.13) | M18       | 3/4"  |
| R150-20B  | 150.0      | 250/300 | 19.5 (0.77)         | 21.2 (0.83) | 36.0 (1.42) | 75.0 (2.95) | 3.2 (0.13) | M20       | 3/4"  |
| R150-22B  | 150.0      | 250/300 | 19.5 (0.77)         | 23.2 (0.91) | 36.0 (1.42) | 75.0 (2.95) | 3.2 (0.13) | M22       | 7/8"  |

# NON-INSULATED RING TERMINALS

- Brazed seam protects terminal barrel from splitting during the crimping process
- Material: Copper

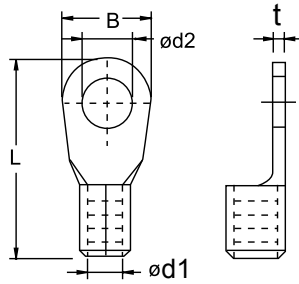


| Part No.  | Wire Range |         | Dimension mm (inch) |             |             |             |            | Stud Size |       |
|-----------|------------|---------|---------------------|-------------|-------------|-------------|------------|-----------|-------|
|           | sq. mm.    | AWG     | d1                  | d2          | B           | L           | t          | mm        | inch  |
| R180-8B   | 180.0      | 300/350 | 22.0 (0.87)         | 8.6 (0.34)  | 40.0 (1.57) | 70.0 (2.76) | 3.2 (0.13) | M8        | 5/16" |
| R180-10B  | 180.0      | 300/350 | 22.0 (0.87)         | 10.7 (0.42) | 40.0 (1.57) | 70.0 (2.76) | 3.2 (0.13) | M10       | 3/8"  |
| R180-12B  | 180.0      | 300/350 | 22.0 (0.87)         | 13.2 (0.52) | 40.0 (1.57) | 70.0 (2.76) | 3.2 (0.13) | M12       | 1/2"  |
| R180-14B  | 180.0      | 300/350 | 22.0 (0.87)         | 15.2 (0.60) | 40.0 (1.57) | 70.0 (2.76) | 3.2 (0.13) | M14       | 9/16" |
| R180-S16B | 180.0      | 300/350 | 22.0 (0.87)         | 17.2 (0.68) | 40.0 (1.57) | 70.0 (2.76) | 3.2 (0.13) | M16       | 5/8"  |
| R180-L8B  | 180.0      | 300/350 | 22.0 (0.87)         | 8.6 (0.34)  | 40.0 (1.57) | 90.0 (3.54) | 3.2 (0.13) | M8        | 5/16" |
| R180-L10B | 180.0      | 300/350 | 22.0 (0.87)         | 10.7 (0.42) | 40.0 (1.57) | 90.0 (3.54) | 3.2 (0.13) | M10       | 3/8"  |
| R180-L12B | 180.0      | 300/350 | 22.0 (0.87)         | 13.2 (0.52) | 40.0 (1.57) | 90.0 (3.54) | 3.2 (0.13) | M12       | 1/2"  |
| R180-L14B | 180.0      | 300/350 | 22.0 (0.87)         | 15.2 (0.60) | 40.0 (1.57) | 90.0 (3.54) | 3.2 (0.13) | M14       | 9/16" |
| R180-16B  | 180.0      | 300/350 | 22.0 (0.87)         | 17.2 (0.68) | 40.0 (1.57) | 90.0 (3.54) | 3.2 (0.13) | M16       | 5/8"  |
| R180-18B  | 180.0      | 300/350 | 22.0 (0.87)         | 19.2 (0.76) | 40.0 (1.57) | 90.0 (3.54) | 3.2 (0.13) | M18       | 3/4"  |
| R180-20B  | 180.0      | 300/350 | 22.0 (0.87)         | 21.2 (0.83) | 40.0 (1.57) | 90.0 (3.54) | 3.2 (0.13) | M20       | 3/4"  |
| R180-22B  | 180.0      | 300/350 | 22.0 (0.87)         | 23.2 (0.91) | 40.0 (1.57) | 90.0 (3.54) | 3.2 (0.13) | M22       | 7/8"  |
| R180-24B  | 180.0      | 300/350 | 22.0 (0.87)         | 25.2 (0.99) | 40.0 (1.57) | 90.0 (3.54) | 3.2 (0.13) | M24       | 7/8"  |
| R180-27B  | 180.0      | 300/350 | 22.0 (0.87)         | 28.2 (1.11) | 40.0 (1.57) | 90.0 (3.54) | 3.2 (0.13) | M27       | 1"    |
| R200-8B   | 200.0      | 400/500 | 24.0 (0.94)         | 8.6 (0.34)  | 44.0 (1.73) | 79.0 (3.11) | 4.0 (0.16) | M8        | 5/16" |
| R200-10B  | 200.0      | 400/500 | 24.0 (0.94)         | 10.7 (0.42) | 44.0 (1.73) | 79.0 (3.11) | 4.0 (0.16) | M10       | 3/8"  |
| R200-12B  | 200.0      | 400/500 | 24.0 (0.94)         | 13.2 (0.52) | 44.0 (1.73) | 79.0 (3.11) | 4.0 (0.16) | M12       | 1/2"  |
| R200-14B  | 200.0      | 400/500 | 24.0 (0.94)         | 15.2 (0.60) | 44.0 (1.73) | 79.0 (3.11) | 4.0 (0.16) | M14       | 9/16" |
| R200-S16B | 200.0      | 400/500 | 24.0 (0.94)         | 17.2 (0.68) | 44.0 (1.73) | 79.0 (3.11) | 4.0 (0.16) | M16       | 5/8"  |
| R200-S18B | 200.0      | 400/500 | 24.0 (0.94)         | 19.2 (0.76) | 44.0 (1.73) | 79.0 (3.11) | 4.0 (0.16) | M18       | 3/4"  |
| R200-L8B  | 200.0      | 400/500 | 24.0 (0.94)         | 8.6 (0.34)  | 44.0 (1.73) | 91.0 (3.58) | 4.0 (0.16) | M8        | 5/16" |
| R200-L10B | 200.0      | 400/500 | 24.0 (0.94)         | 10.7 (0.42) | 44.0 (1.73) | 91.0 (3.58) | 4.0 (0.16) | M10       | 3/8"  |
| R200-L12B | 200.0      | 400/500 | 24.0 (0.94)         | 13.2 (0.52) | 44.0 (1.73) | 91.0 (3.58) | 4.0 (0.16) | M12       | 1/2"  |
| R200-L14B | 200.0      | 400/500 | 24.0 (0.94)         | 15.2 (0.60) | 44.0 (1.73) | 91.0 (3.58) | 4.0 (0.16) | M14       | 9/16" |
| R200-16B  | 200.0      | 400/500 | 24.0 (0.94)         | 17.2 (0.68) | 44.0 (1.73) | 91.0 (3.58) | 4.0 (0.16) | M16       | 5/8"  |
| R200-18B  | 200.0      | 400/500 | 24.0 (0.94)         | 19.2 (0.76) | 44.0 (1.73) | 91.0 (3.58) | 4.0 (0.16) | M18       | 3/4"  |
| R200-20B  | 200.0      | 400/500 | 24.0 (0.94)         | 21.2 (0.83) | 44.0 (1.73) | 91.0 (3.58) | 4.0 (0.16) | M20       | 3/4"  |
| R200-22B  | 200.0      | 400/500 | 24.0 (0.94)         | 23.2 (0.91) | 44.0 (1.73) | 91.0 (3.58) | 4.0 (0.16) | M22       | 7/8"  |
| R200-24B  | 200.0      | 400/500 | 24.0 (0.94)         | 25.2 (0.99) | 44.0 (1.73) | 91.0 (3.58) | 4.0 (0.16) | M24       | 7/8"  |
| R200-27B  | 200.0      | 400/500 | 24.0 (0.94)         | 28.2 (1.11) | 44.0 (1.73) | 91.0 (3.58) | 4.0 (0.16) | M27       | 1"    |
| R325-8B   | 325.0      | 500/600 | 28.0 (1.10)         | 8.6 (0.34)  | 50.0 (1.97) | 92.0 (3.62) | 4.5 (0.18) | M8        | 5/16" |
| R325-10B  | 325.0      | 500/600 | 28.0 (1.10)         | 10.7 (0.42) | 50.0 (1.97) | 92.0 (3.62) | 4.5 (0.18) | M10       | 3/8"  |
| R325-12B  | 325.0      | 500/600 | 28.0 (1.10)         | 13.2 (0.52) | 50.0 (1.97) | 92.0 (3.62) | 4.5 (0.18) | M12       | 1/2"  |
| R325-14B  | 325.0      | 500/600 | 28.0 (1.10)         | 15.2 (0.60) | 50.0 (1.97) | 92.0 (3.62) | 4.5 (0.18) | M14       | 9/16" |
| R325-16B  | 325.0      | 500/600 | 28.0 (1.10)         | 17.2 (0.68) | 50.0 (1.97) | 92.0 (3.62) | 4.5 (0.18) | M16       | 5/8"  |
| R325-S18B | 325.0      | 500/600 | 28.0 (1.10)         | 19.2 (0.76) | 50.0 (1.97) | 92.0 (3.62) | 4.5 (0.18) | M18       | 3/4"  |
| R325-S20B | 325.0      | 500/600 | 28.0 (1.10)         | 21.2 (0.83) | 50.0 (1.97) | 92.0 (3.62) | 4.5 (0.18) | M20       | 3/4"  |
| R325-L8B  | 325.0      | 500/600 | 28.0 (1.10)         | 8.6 (0.34)  | 50.0 (1.97) | 98.0 (3.86) | 4.5 (0.18) | M8        | 5/16" |
| R325-L10B | 325.0      | 500/600 | 28.0 (1.10)         | 10.7 (0.42) | 50.0 (1.97) | 98.0 (3.86) | 4.5 (0.18) | M10       | 3/8"  |
| R325-L12B | 325.0      | 500/600 | 28.0 (1.10)         | 13.2 (0.52) | 50.0 (1.97) | 98.0 (3.86) | 4.5 (0.18) | M12       | 1/2"  |
| R325-L14B | 325.0      | 500/600 | 28.0 (1.10)         | 15.2 (0.60) | 50.0 (1.97) | 98.0 (3.86) | 4.5 (0.18) | M14       | 9/16" |
| R325-L16B | 325.0      | 500/600 | 28.0 (1.10)         | 17.2 (0.68) | 50.0 (1.97) | 98.0 (3.86) | 4.5 (0.18) | M16       | 5/8"  |
| R325-18B  | 325.0      | 500/600 | 28.0 (1.10)         | 19.2 (0.76) | 50.0 (1.97) | 98.0 (3.86) | 4.5 (0.18) | M18       | 3/4"  |
| R325-20B  | 325.0      | 500/600 | 28.0 (1.10)         | 21.2 (0.83) | 50.0 (1.97) | 98.0 (3.86) | 4.5 (0.18) | M20       | 3/4"  |
| R325-22B  | 325.0      | 500/600 | 28.0 (1.10)         | 23.2 (0.91) | 50.0 (1.97) | 98.0 (3.86) | 4.5 (0.18) | M22       | 7/8"  |
| R325-24B  | 325.0      | 500/600 | 28.0 (1.10)         | 25.2 (0.99) | 50.0 (1.97) | 98.0 (3.86) | 4.5 (0.18) | M24       | 7/8"  |
| R325-27B  | 325.0      | 500/600 | 28.0 (1.10)         | 28.2 (1.11) | 50.0 (1.97) | 98.0 (3.86) | 4.5 (0.18) | M27       | 1"    |



# NON-INSULATED RING TERMINALS (DIN STANDARD)

- Brazed seam protects terminal barrel from splitting during the crimping process
- Material: Copper

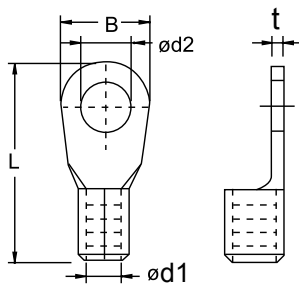


| Part No.   | Wire Range |       | Dimension mm (inch) |             |             |             |            | Stud Size |       |
|------------|------------|-------|---------------------|-------------|-------------|-------------|------------|-----------|-------|
|            | sq. mm.    | AWG   | d1                  | d2          | B           | L           | t          | mm        | inch  |
| DR2.5-1B   | 0.5-1.5    | 22-16 | 1.6 (0.06)          | 2.7 (0.11)  | 6.0 (0.24)  | 14.0 (0.55) | 0.8 (0.03) | M2.6      | #3    |
| DR3-1B     | 0.5-1.5    | 22-16 | 1.6 (0.06)          | 3.2 (0.13)  | 6.0 (0.24)  | 14.0 (0.55) | 0.8 (0.03) | M3        | #5    |
| DR3.5-1B   | 0.5-1.5    | 22-16 | 1.6 (0.06)          | 3.7 (0.15)  | 6.0 (0.24)  | 14.0 (0.55) | 0.8 (0.03) | M3.5      | #6    |
| DR4-1B     | 0.5-1.5    | 22-16 | 1.6 (0.06)          | 4.3 (0.17)  | 8.0 (0.31)  | 16.0 (0.63) | 0.8 (0.03) | M4        | #8    |
| DR5-1B     | 0.5-1.5    | 22-16 | 1.6 (0.06)          | 5.3 (0.21)  | 10.0 (0.39) | 18.0 (0.71) | 0.8 (0.03) | M5        | #10   |
| DR6-1B     | 0.5-1.5    | 22-16 | 1.6 (0.06)          | 6.5 (0.26)  | 11.0 (0.43) | 19.5 (0.77) | 0.8 (0.03) | M6        | 1/4"  |
| DR3-2.5B   | 1.5-2.5    | 16-14 | 2.3 (0.09)          | 3.2 (0.13)  | 6.0 (0.24)  | 14.0 (0.55) | 0.8 (0.03) | M3        | #5    |
| DR3.5-2.5B | 1.5-2.5    | 16-14 | 2.3 (0.09)          | 3.7 (0.15)  | 6.0 (0.24)  | 14.0 (0.55) | 0.8 (0.03) | M3.5      | #6    |
| DR4-2.5B   | 1.5-2.5    | 16-14 | 2.3 (0.09)          | 4.3 (0.17)  | 8.0 (0.31)  | 16.0 (0.63) | 0.8 (0.03) | M4        | #8    |
| DR5-2.5B   | 1.5-2.5    | 16-14 | 2.3 (0.09)          | 5.3 (0.21)  | 10.1 (0.40) | 19.0 (0.75) | 0.8 (0.03) | M5        | #10   |
| DR6-2.5B   | 1.5-2.5    | 16-14 | 2.3 (0.09)          | 6.5 (0.26)  | 11.0 (0.43) | 21.5 (0.85) | 0.8 (0.03) | M6        | 1/4"  |
| DR8-2.5B   | 1.5-2.5    | 16-14 | 2.3 (0.09)          | 8.4 (0.33)  | 14.0 (0.55) | 24.0 (0.94) | 0.8 (0.03) | M8        | 5/16" |
| DR4-6B     | 4.0-6.0    | 12-10 | 3.6 (0.14)          | 4.3 (0.17)  | 8.0 (0.31)  | 18.0 (0.71) | 1.0 (0.04) | M4        | #8    |
| DR5-6B     | 4.0-6.0    | 12-10 | 3.6 (0.14)          | 5.3 (0.21)  | 10.1 (0.40) | 20.0 (0.79) | 1.0 (0.04) | M5        | #10   |
| DR6-6B     | 4.0-6.0    | 12-10 | 3.6 (0.14)          | 6.5 (0.26)  | 11.1 (0.44) | 21.5 (0.85) | 1.0 (0.04) | M6        | 1/4"  |
| DR8-6B     | 4.0-6.0    | 12-10 | 3.6 (0.14)          | 8.4 (0.33)  | 14.1 (0.56) | 26.0 (1.02) | 1.0 (0.04) | M8        | 5/16" |
| DR10-6B    | 4.0-6.0    | 12-10 | 3.6 (0.14)          | 10.5 (0.41) | 18.0 (0.71) | 30.0 (1.18) | 1.0 (0.04) | M10       | 3/8"  |
| DR12-6B    | 4.0-6.0    | 12-10 | 3.6 (0.14)          | 13.0 (0.51) | 19.0 (0.75) | 22.5 (0.89) | 1.0 (0.04) | M12       | 1/2"  |
| DR5-10B    | 10.0       | 8     | 4.5 (0.18)          | 5.3 (0.21)  | 10.0 (0.39) | 21.0 (0.83) | 1.1 (0.04) | M5        | #10   |
| DR6-10B    | 10.0       | 8     | 4.5 (0.18)          | 6.5 (0.26)  | 11.0 (0.43) | 22.5 (0.89) | 1.1 (0.04) | M6        | 1/4"  |
| DR8-10B    | 10.0       | 8     | 4.5 (0.18)          | 8.4 (0.33)  | 14.0 (0.55) | 27.0 (1.06) | 1.1 (0.04) | M8        | 5/16" |
| DR10-10B   | 10.0       | 8     | 4.5 (0.18)          | 10.5 (0.41) | 18.0 (0.71) | 30.0 (1.18) | 1.1 (0.04) | M10       | 3/8"  |
| DR12-10B   | 10.0       | 8     | 4.5 (0.18)          | 13.0 (0.51) | 22.0 (0.87) | 34.0 (1.34) | 1.1 (0.04) | M12       | 1/2"  |
| DR5-16B    | 16.0       | 6     | 5.8 (0.23)          | 5.3 (0.21)  | 11.0 (0.43) | 25.5 (1.00) | 1.2 (0.05) | M5        | #10   |
| DR6-16B    | 16.0       | 6     | 5.8 (0.23)          | 6.5 (0.26)  | 11.0 (0.43) | 25.5 (1.00) | 1.2 (0.05) | M6        | 1/4"  |
| DR8-16B    | 16.0       | 6     | 5.8 (0.23)          | 8.4 (0.33)  | 14.0 (0.55) | 29.0 (1.14) | 1.2 (0.05) | M8        | 5/16" |
| DR10-16B   | 16.0       | 6     | 5.8 (0.23)          | 10.5 (0.41) | 18.0 (0.71) | 33.0 (1.30) | 1.2 (0.05) | M10       | 3/8"  |
| DR12-16B   | 16.0       | 6     | 5.8 (0.23)          | 13.0 (0.51) | 22.0 (0.87) | 37.0 (1.46) | 1.2 (0.05) | M12       | 1/2"  |
| DR5-25B    | 25.0       | 4     | 7.5 (0.30)          | 5.3 (0.21)  | 12.0 (0.47) | 31.0 (1.22) | 1.5 (0.06) | M5        | #10   |
| DR6-25B    | 25.0       | 4     | 7.5 (0.30)          | 6.5 (0.26)  | 12.0 (0.47) | 31.0 (1.22) | 1.5 (0.06) | M6        | 1/4"  |
| DR8-25B    | 25.0       | 4     | 7.5 (0.30)          | 8.4 (0.33)  | 16.0 (0.63) | 33.0 (1.30) | 1.5 (0.06) | M8        | 5/16" |
| DR10-25B   | 25.0       | 4     | 7.5 (0.30)          | 10.5 (0.41) | 18.0 (0.71) | 35.0 (1.38) | 1.5 (0.06) | M10       | 3/8"  |
| DR12-25B   | 25.0       | 4     | 7.5 (0.30)          | 13.0 (0.51) | 22.0 (0.87) | 42.0 (1.65) | 1.5 (0.06) | M12       | 1/2"  |
| DR16-25B   | 25.0       | 4     | 7.5 (0.30)          | 17.0 (0.67) | 28.0 (1.10) | 49.0 (1.93) | 1.5 (0.06) | M16       | 5/8"  |

\*DIN46234

# NON-INSULATED RING TERMINALS (DIN STANDARD)

- Brazed seam protects terminal barrel from splitting during the crimping process
- Material: Copper

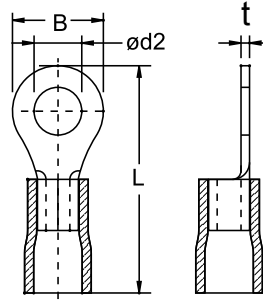


| Part No.  | Wire Range |         | Dimension mm (inch) |             |             |             |            | Stud Size |       |
|-----------|------------|---------|---------------------|-------------|-------------|-------------|------------|-----------|-------|
|           | sq. mm.    | AWG     | d1                  | d2          | B           | L           | t          | mm        | inch  |
| DR6-35B   | 35.0       | 2       | 9.0 (0.35)          | 6.5 (0.26)  | 15.0 (0.59) | 33.5 (1.32) | 1.6 (0.06) | M6        | 1/4"  |
| DR8-35B   | 35.0       | 2       | 9.0 (0.35)          | 8.4 (0.33)  | 16.0 (0.63) | 34.0 (1.34) | 1.6 (0.06) | M8        | 5/16" |
| DR10-35B  | 35.0       | 2       | 9.0 (0.35)          | 10.5 (0.41) | 18.0 (0.71) | 36.0 (1.42) | 1.6 (0.06) | M10       | 3/8"  |
| DR12-35B  | 35.0       | 2       | 9.0 (0.35)          | 13.0 (0.51) | 22.0 (0.87) | 42.0 (1.65) | 1.6 (0.06) | M12       | 1/2"  |
| DR16-35B  | 35.0       | 2       | 9.0 (0.35)          | 17.0 (0.67) | 28.0 (1.10) | 50.0 (1.97) | 1.6 (0.06) | M16       | 5/8"  |
| DR6-50B   | 50.0       | 1/0     | 11.0 (0.43)         | 6.5 (0.26)  | 18.0 (0.71) | 43.0 (1.69) | 1.8 (0.07) | M6        | 1/4"  |
| DR8-50B   | 50.0       | 1/0     | 11.0 (0.43)         | 8.4 (0.33)  | 18.0 (0.71) | 43.0 (1.69) | 1.8 (0.07) | M8        | 5/16" |
| DR10-50B  | 50.0       | 1/0     | 11.0 (0.43)         | 10.5 (0.41) | 18.0 (0.71) | 43.0 (1.69) | 1.8 (0.07) | M10       | 3/8"  |
| DR12-50B  | 50.0       | 1/0     | 11.0 (0.43)         | 13.0 (0.51) | 22.0 (0.87) | 47.0 (1.85) | 1.8 (0.07) | M12       | 1/2"  |
| DR16-50B  | 50.0       | 1/0     | 11.0 (0.43)         | 17.0 (0.67) | 28.0 (1.10) | 54.0 (2.13) | 1.8 (0.07) | M16       | 5/8"  |
| DR6-70B   | 70.0       | 2/0     | 13.0 (0.51)         | 6.5 (0.26)  | 22.0 (0.87) | 49.0 (1.93) | 2.0 (0.08) | M6        | 1/4"  |
| DR8-70B   | 70.0       | 2/0     | 13.0 (0.51)         | 8.4 (0.33)  | 22.0 (0.87) | 49.0 (1.93) | 2.0 (0.08) | M8        | 5/16" |
| DR10-70B  | 70.0       | 2/0     | 13.0 (0.51)         | 10.5 (0.41) | 22.0 (0.87) | 49.0 (1.93) | 2.0 (0.08) | M10       | 3/8"  |
| DR12-70B  | 70.0       | 2/0     | 13.0 (0.51)         | 13.0 (0.51) | 22.0 (0.87) | 49.0 (1.93) | 2.0 (0.08) | M12       | 1/2"  |
| DR16-70B  | 70.0       | 2/0     | 13.0 (0.51)         | 17.0 (0.67) | 28.0 (1.10) | 56.0 (2.20) | 2.0 (0.08) | M16       | 5/8"  |
| DR8-95B   | 95.0       | 3/0     | 15.0 (0.59)         | 8.4 (0.33)  | 24.0 (0.94) | 54.0 (2.13) | 2.5 (0.10) | M8        | 5/16" |
| DR10-95B  | 95.0       | 3/0     | 15.0 (0.59)         | 10.5 (0.41) | 24.0 (0.94) | 54.0 (2.13) | 2.5 (0.10) | M10       | 3/8"  |
| DR12-95B  | 95.0       | 3/0     | 15.0 (0.59)         | 13.0 (0.51) | 24.0 (0.94) | 54.0 (2.13) | 2.5 (0.10) | M12       | 1/2"  |
| DR16-95B  | 95.0       | 3/0     | 15.0 (0.59)         | 17.0 (0.67) | 28.0 (1.10) | 58.0 (2.28) | 2.5 (0.10) | M16       | 5/8"  |
| DR8-120B  | 120.0      | 4/0     | 16.5 (0.65)         | 8.4 (0.33)  | 24.0 (0.94) | 56.0 (2.20) | 3.0 (0.12) | M8        | 5/16" |
| DR10-120B | 120.0      | 4/0     | 16.5 (0.65)         | 10.5 (0.41) | 24.0 (0.94) | 56.0 (2.20) | 3.0 (0.12) | M10       | 3/8"  |
| DR12-120B | 120.0      | 4/0     | 16.5 (0.65)         | 13.0 (0.51) | 24.0 (0.94) | 56.0 (2.20) | 3.0 (0.12) | M12       | 1/2"  |
| DR16-120B | 120.0      | 4/0     | 16.5 (0.65)         | 17.0 (0.67) | 28.0 (1.10) | 58.0 (2.28) | 3.0 (0.12) | M16       | 5/8"  |
| DR10-150B | 150.0      | 250/300 | 19.0 (0.75)         | 10.5 (0.41) | 30.0 (1.18) | 65.0 (2.56) | 3.2 (0.13) | M10       | 3/8"  |
| DR12-150B | 150.0      | 250/300 | 19.0 (0.75)         | 13.0 (0.51) | 30.0 (1.18) | 65.0 (2.56) | 3.2 (0.13) | M12       | 1/2"  |
| DR16-150B | 150.0      | 250/300 | 19.0 (0.75)         | 17.0 (0.67) | 30.0 (1.18) | 65.0 (2.56) | 3.2 (0.13) | M16       | 5/8"  |
| DR10-185B | 185.0      | 300/350 | 21.0 (0.83)         | 10.5 (0.41) | 36.0 (1.42) | 68.0 (2.68) | 3.5 (0.14) | M10       | 3/8"  |
| DR12-185B | 185.0      | 300/350 | 21.0 (0.83)         | 13.0 (0.51) | 36.0 (1.42) | 68.0 (2.68) | 3.5 (0.14) | M12       | 1/2"  |
| DR16-185B | 185.0      | 300/350 | 21.0 (0.83)         | 17.0 (0.67) | 36.0 (1.42) | 68.0 (2.68) | 3.5 (0.14) | M16       | 5/8"  |
| DR10-240B | 240.0      | 400/450 | 23.5 (0.93)         | 10.5 (0.41) | 38.0 (1.50) | 75.0 (2.95) | 4.0 (0.16) | M10       | 3/8"  |
| DR12-240B | 240.0      | 400/450 | 23.5 (0.93)         | 13.0 (0.51) | 38.0 (1.50) | 75.0 (2.95) | 4.0 (0.16) | M12       | 1/2"  |
| DR16-240B | 240.0      | 400/450 | 23.5 (0.93)         | 17.0 (0.67) | 38.0 (1.50) | 75.0 (2.95) | 4.0 (0.16) | M16       | 5/8"  |

\*DIN46234

# VINYL-INSULATED RING TERMINALS

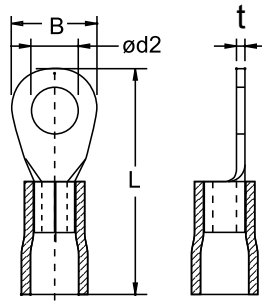
- Insulation support helps to prevent wire damage in bending applications
- Copper tube with tin plated end sleeves with insulation PVC



| Part No.    | Color  | Wire Range |       | Dimension mm (inch) |             |             |            | Stud Size |       |
|-------------|--------|------------|-------|---------------------|-------------|-------------|------------|-----------|-------|
|             |        | sq. mm.    | AWG   | B                   | d2          | L           | t          | mm        | inch  |
| VR1.25-3    | Red    | 0.5-1.5    | 22-16 | 5.5 (0.22)          | 3.2 (0.13)  | 17.5 (0.69) | 0.8 (0.03) | M3        | #5    |
| VR1.25-3.5  | Red    | 0.5-1.5    | 22-16 | 5.5 (0.22)          | 3.7 (0.15)  | 17.5 (0.69) | 0.8 (0.03) | M3.5      | #6    |
| VR1.25-3.5L | Red    | 0.5-1.5    | 22-16 | 6.6 (0.26)          | 3.7 (0.15)  | 20.4 (0.80) | 0.8 (0.03) | M3.5      | #6    |
| VR1.25-4    | Red    | 0.5-1.5    | 22-16 | 8.0 (0.31)          | 4.3 (0.17)  | 21.7 (0.85) | 0.8 (0.03) | M4        | #8    |
| VR1.25-4M   | Red    | 0.5-1.5    | 22-16 | 6.6 (0.26)          | 4.3 (0.17)  | 20.4 (0.80) | 0.8 (0.03) | M4        | #8    |
| VR1.25-5    | Red    | 0.5-1.5    | 22-16 | 8.0 (0.31)          | 5.3 (0.21)  | 21.7 (0.85) | 0.8 (0.03) | M5        | #10   |
| VR1.25-6    | Red    | 0.5-1.5    | 22-16 | 11.6 (0.46)         | 6.4 (0.25)  | 27.6 (1.09) | 0.8 (0.03) | M6        | 1/4"  |
| VR1.25-8    | Red    | 0.5-1.5    | 22-16 | 11.6 (0.46)         | 8.4 (0.33)  | 27.6 (1.09) | 0.8 (0.03) | M8        | 5/16" |
| VR1.25-10   | Red    | 0.5-1.5    | 22-16 | 13.7 (0.54)         | 10.5 (0.41) | 31.5 (1.24) | 0.8 (0.03) | M10       | 3/8"  |
| VR1.25-12   | Red    | 0.5-1.5    | 22-16 | 19.0 (0.75)         | 13.0 (0.51) | 35.0 (1.38) | 0.8 (0.03) | M12       | 1/2"  |
| VR2-3M      | Blue   | 1.5-2.5    | 16-14 | 6.6 (0.26)          | 3.2 (0.13)  | 20.6 (0.81) | 0.8 (0.03) | M3        | #5    |
| VR2-3       | Blue   | 1.5-2.5    | 16-14 | 8.5 (0.33)          | 3.2 (0.13)  | 23.0 (0.91) | 0.8 (0.03) | M3        | #5    |
| VR2-3.5     | Blue   | 1.5-2.5    | 16-14 | 6.6 (0.26)          | 3.7 (0.15)  | 20.6 (0.81) | 0.8 (0.03) | M3.5      | #6    |
| VR2-3.5L    | Blue   | 1.5-2.5    | 16-14 | 8.5 (0.33)          | 3.7 (0.15)  | 23.0 (0.91) | 0.8 (0.03) | M3.5      | #6    |
| VR2-4       | Blue   | 1.5-2.5    | 16-14 | 8.5 (0.33)          | 4.3 (0.17)  | 23.0 (0.91) | 0.8 (0.03) | M4        | #8    |
| VR2-4M      | Blue   | 1.5-2.5    | 16-14 | 6.6 (0.26)          | 4.3 (0.17)  | 20.8 (0.82) | 0.8 (0.03) | M4        | #8    |
| VR2-5M      | Blue   | 1.5-2.5    | 16-14 | 8.5 (0.33)          | 5.3 (0.21)  | 23.0 (0.91) | 0.8 (0.03) | M5        | #10   |
| VR2-5       | Blue   | 1.5-2.5    | 16-14 | 9.5 (0.37)          | 5.3 (0.21)  | 23.0 (0.91) | 0.8 (0.03) | M5        | #10   |
| VR2-6       | Blue   | 1.5-2.5    | 16-14 | 12.0 (0.47)         | 6.4 (0.25)  | 28.1 (1.11) | 0.8 (0.03) | M6        | 1/4"  |
| VR2-8       | Blue   | 1.5-2.5    | 16-14 | 12.0 (0.47)         | 8.4 (0.33)  | 28.1 (1.11) | 0.8 (0.03) | M8        | 5/16" |
| VR2-10      | Blue   | 1.5-2.5    | 16-14 | 13.7 (0.54)         | 10.5 (0.41) | 31.9 (1.26) | 0.8 (0.03) | M10       | 3/8"  |
| VR2-12      | Blue   | 1.5-2.5    | 16-14 | 19.0 (0.75)         | 13.0 (0.51) | 35.5 (1.40) | 0.8 (0.03) | M12       | 1/2"  |
| VR5.5-3     | Yellow | 4.0-6.0    | 12-10 | 9.5 (0.37)          | 3.2 (0.13)  | 26.7 (1.05) | 1.0 (0.04) | M3        | #5    |
| VR5.5-3.5   | Yellow | 4.0-6.0    | 12-10 | 9.5 (0.37)          | 3.7 (0.15)  | 26.7 (1.05) | 1.0 (0.04) | M3.5      | #6    |
| VR5.5-4S    | Yellow | 4.0-6.0    | 12-10 | 7.4 (0.29)          | 4.3 (0.17)  | 26.7 (1.05) | 1.0 (0.04) | M4        | #8    |
| VR5.5-4     | Yellow | 4.0-6.0    | 12-10 | 9.5 (0.37)          | 4.3 (0.17)  | 26.7 (1.05) | 1.0 (0.04) | M4        | #8    |
| VR5.5-5     | Yellow | 4.0-6.0    | 12-10 | 9.5 (0.37)          | 5.3 (0.21)  | 26.7 (1.05) | 1.0 (0.04) | M5        | #10   |
| VR5.5-5S    | Yellow | 4.0-6.0    | 12-10 | 7.4 (0.29)          | 5.3 (0.21)  | 26.7 (1.05) | 1.0 (0.04) | M5        | #10   |
| VR5.5-6     | Yellow | 4.0-6.0    | 12-10 | 12.0 (0.47)         | 6.4 (0.25)  | 32.7 (1.29) | 1.0 (0.04) | M6        | 1/4"  |
| VR5.5-8     | Yellow | 4.0-6.0    | 12-10 | 15.0 (0.59)         | 8.4 (0.33)  | 34.9 (1.37) | 1.0 (0.04) | M8        | 5/16" |
| VR5.5-10    | Yellow | 4.0-6.0    | 12-10 | 15.0 (0.59)         | 10.5 (0.41) | 34.9 (1.37) | 1.0 (0.04) | M10       | 3/8"  |
| VR5.5-12    | Yellow | 4.0-6.0    | 12-10 | 19.2 (0.76)         | 13.0 (0.51) | 39.9 (1.57) | 1.0 (0.04) | M12       | 1/2"  |

# VINYL-INSULATED RING TERMINALS (DIN STANDARD)

- Insulation support helps to prevent wire damage in bending applications
- Material: Copper tube with tin plated end sleeves with insulation PVC

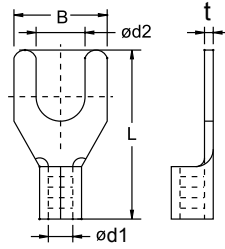


| Part No.    | Color  | Wire Range |       | Dimension mm (inch) |             |             |            | Stud Size |       |
|-------------|--------|------------|-------|---------------------|-------------|-------------|------------|-----------|-------|
|             |        | sq. mm.    | AWG   | B                   | d2          | L           | t          | mm        | inch  |
| VDR2.5-1B   | Red    | 0.5-1.5    | 22-16 | 6.0 (0.24)          | 2.7 (0.11)  | 19.0 (0.75) | 0.8 (0.03) | M2.6      | #3    |
| VDR3-1B     | Red    | 0.5-1.5    | 22-16 | 6.0 (0.24)          | 3.2 (0.13)  | 19.0 (0.75) | 0.8 (0.03) | M3        | #5    |
| VDR3.5-1B   | Red    | 0.5-1.5    | 22-16 | 6.0 (0.24)          | 3.7 (0.15)  | 19.0 (0.75) | 0.8 (0.03) | M3.5      | #6    |
| VDR4-1B     | Red    | 0.5-1.5    | 22-16 | 8.0 (0.31)          | 4.3 (0.17)  | 21.0 (0.83) | 0.8 (0.03) | M4        | #8    |
| VDR5-1B     | Red    | 0.5-1.5    | 22-16 | 10.0 (0.39)         | 5.3 (0.21)  | 23.0 (0.91) | 0.8 (0.03) | M5        | #10   |
| VDR6-1B     | Red    | 0.5-1.5    | 22-16 | 11.0 (0.43)         | 6.5 (0.26)  | 25.5 (1.00) | 0.8 (0.03) | M6        | 1/4"  |
| VDR3-2.5B   | Blue   | 1.5-2.5    | 16-14 | 6.0 (0.24)          | 3.2 (0.13)  | 20.0 (0.79) | 0.8 (0.03) | M3        | #5    |
| VDR3.5-2.5B | Blue   | 1.5-2.5    | 16-14 | 6.0 (0.24)          | 3.7 (0.15)  | 20.0 (0.79) | 0.8 (0.03) | M3.5      | #6    |
| VDR4-2.5B   | Blue   | 1.5-2.5    | 16-14 | 8.0 (0.31)          | 4.3 (0.17)  | 22.0 (0.87) | 0.8 (0.03) | M4        | #8    |
| VDR5-2.5B   | Blue   | 1.5-2.5    | 16-14 | 10.0 (0.39)         | 5.3 (0.21)  | 25.0 (0.98) | 0.8 (0.03) | M5        | #10   |
| VDR6-2.5B   | Blue   | 1.5-2.5    | 16-14 | 11.0 (0.43)         | 6.5 (0.26)  | 27.5 (1.08) | 0.8 (0.03) | M6        | 1/4"  |
| VDR8-2.5B   | Blue   | 1.5-2.5    | 16-14 | 14.0 (0.55)         | 8.4 (0.33)  | 30.0 (1.18) | 0.8 (0.03) | M8        | 5/16" |
| VDR4-6B     | Yellow | 4.0-6.0    | 12-10 | 8.0 (0.31)          | 4.3 (0.17)  | 24.0 (0.94) | 1.0 (0.04) | M4        | #8    |
| VDR5-6B     | Yellow | 4.0-6.0    | 12-10 | 10.0 (0.39)         | 5.3 (0.21)  | 26.0 (1.02) | 1.0 (0.04) | M5        | #10   |
| VDR6-6B     | Yellow | 4.0-6.0    | 12-10 | 11.0 (0.43)         | 6.5 (0.26)  | 27.5 (1.08) | 1.0 (0.04) | M6        | 1/4"  |
| VDR8-6B     | Yellow | 4.0-6.0    | 12-10 | 14.0 (0.55)         | 8.4 (0.33)  | 32.0 (1.26) | 1.0 (0.04) | M8        | 5/16" |
| VDR10-6B    | Yellow | 4.0-6.0    | 12-10 | 18.0 (0.71)         | 10.5 (0.41) | 36.0 (1.42) | 1.0 (0.04) | M10       | 3/8"  |
| VDR12-6B    | Yellow | 4.0-6.0    | 12-10 | 19.0 (0.75)         | 13.0 (0.51) | 41.5 (1.63) | 1.0 (0.04) | M12       | 1/2"  |

\*DIN46237

# NON-INSULATED SPADE TERMINALS

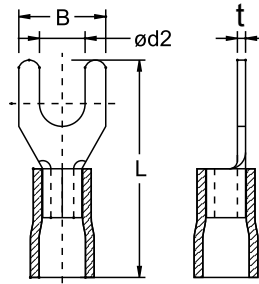
- Fork design provides fast and easy installation without removing the fastener
- Brazed seam protects terminal barrel from splitting during the crimping process
- Material: Copper



| Part No.    | Wire Range |       | Dimension mm (inch) |            |             |             |            | Stud Size |       |
|-------------|------------|-------|---------------------|------------|-------------|-------------|------------|-----------|-------|
|             | sq. mm.    | AWG   | d1                  | d2         | B           | L           | t          | mm        | inch  |
| Y1.25-3B    | 0.5-1.5    | 22-16 | 1.9 (0.07)          | 3.2 (0.13) | 5.7 (0.22)  | 16.0 (0.63) | 0.7 (0.03) | M3        | #5    |
| Y1.25-3.5SB | 0.5-1.5    | 22-16 | 1.9 (0.07)          | 3.7 (0.15) | 5.7 (0.22)  | 16.0 (0.63) | 0.7 (0.03) | M3.5      | #6    |
| Y1.25-3.5B  | 0.5-1.5    | 22-16 | 1.9 (0.07)          | 3.7 (0.15) | 6.2 (0.24)  | 16.0 (0.63) | 0.7 (0.03) | M3.5      | #6    |
| Y1.25-4SB   | 0.5-1.5    | 22-16 | 1.9 (0.07)          | 4.3 (0.17) | 6.4 (0.25)  | 16.0 (0.63) | 0.7 (0.03) | M4        | #8    |
| Y1.25-4B    | 0.5-1.5    | 22-16 | 1.9 (0.07)          | 4.3 (0.17) | 7.2 (0.28)  | 16.0 (0.63) | 0.7 (0.03) | M4        | #8    |
| Y1.25-5B    | 0.5-1.5    | 22-16 | 1.9 (0.07)          | 5.3 (0.21) | 8.0 (0.31)  | 16.0 (0.63) | 0.7 (0.03) | M5        | #10   |
| Y1.25-6B    | 0.5-1.5    | 22-16 | 1.9 (0.07)          | 6.4 (0.25) | 10.7 (0.42) | 17.0 (0.67) | 0.7 (0.03) | M6        | 1/4"  |
| Y1.25-6SB   | 0.5-1.5    | 22-16 | 1.9 (0.07)          | 6.4 (0.25) | 9.3 (0.37)  | 17.0 (0.67) | 0.7 (0.03) | M6        | 1/4"  |
| Y1.25-8B    | 0.5-1.5    | 22-16 | 1.9 (0.07)          | 8.4 (0.33) | 13.5 (0.53) | 22.1 (0.87) | 0.7 (0.03) | M8        | 5/16" |
| Y2-3B       | 1.5-2.5    | 16-14 | 2.5 (0.10)          | 3.2 (0.13) | 5.7 (0.22)  | 16.0 (0.63) | 0.8 (0.03) | M3        | #5    |
| Y2-3.5SB    | 1.5-2.5    | 16-14 | 2.5 (0.10)          | 3.7 (0.15) | 5.7 (0.22)  | 16.0 (0.63) | 0.8 (0.03) | M3.5      | #6    |
| Y2-3.5B     | 1.5-2.5    | 16-14 | 2.5 (0.10)          | 3.7 (0.15) | 6.2 (0.24)  | 16.0 (0.63) | 0.8 (0.03) | M3.5      | #6    |
| Y2-4SB      | 1.5-2.5    | 16-14 | 2.5 (0.10)          | 4.3 (0.17) | 6.4 (0.25)  | 16.0 (0.63) | 0.8 (0.03) | M4        | #8    |
| Y2-4B       | 1.5-2.5    | 16-14 | 2.5 (0.10)          | 4.3 (0.17) | 7.2 (0.28)  | 16.0 (0.63) | 0.8 (0.03) | M4        | #8    |
| Y2-5B       | 1.5-2.5    | 16-14 | 2.5 (0.10)          | 5.3 (0.21) | 8.0 (0.31)  | 16.0 (0.63) | 0.8 (0.03) | M5        | #10   |
| Y2-6B       | 1.5-2.5    | 16-14 | 2.5 (0.10)          | 6.4 (0.25) | 10.7 (0.42) | 17.0 (0.67) | 0.8 (0.03) | M6        | 1/4"  |
| Y2-6SB      | 1.5-2.5    | 16-14 | 2.5 (0.10)          | 6.4 (0.25) | 9.3 (0.37)  | 17.0 (0.67) | 0.8 (0.03) | M6        | 1/4"  |
| Y2-8B       | 1.5-2.5    | 16-14 | 2.5 (0.10)          | 8.4 (0.33) | 13.5 (0.53) | 22.1 (0.87) | 0.8 (0.03) | M8        | 5/16" |
| Y3.5-3.5B   | 2.5-4.0    | 14-12 | 3.4 (0.13)          | 3.7 (0.15) | 7.3 (0.29)  | 18.0 (0.71) | 0.8 (0.03) | M3.5      | #6    |
| Y3.5-4B     | 2.5-4.0    | 14-12 | 3.4 (0.13)          | 4.3 (0.17) | 8.0 (0.31)  | 18.0 (0.71) | 0.8 (0.03) | M4        | #8    |
| Y3.5-5B     | 2.5-4.0    | 14-12 | 3.4 (0.13)          | 5.3 (0.21) | 8.0 (0.31)  | 18.0 (0.71) | 0.8 (0.03) | M5        | #10   |
| Y5.5-3B     | 4.0-6.0    | 12-10 | 3.6 (0.14)          | 3.2 (0.13) | 7.3 (0.29)  | 19.5 (0.77) | 1.0 (0.04) | M3        | #5    |
| Y5.5-3.5SB  | 4.0-6.0    | 12-10 | 3.6 (0.14)          | 3.7 (0.15) | 6.3 (0.25)  | 19.5 (0.77) | 1.0 (0.04) | M3.5      | #6    |
| Y5.5-3.5B   | 4.0-6.0    | 12-10 | 3.6 (0.14)          | 3.7 (0.15) | 8.1 (0.32)  | 18.5 (0.73) | 1.0 (0.04) | M3.5      | #6    |
| Y5.5-4B     | 4.0-6.0    | 12-10 | 3.6 (0.14)          | 4.3 (0.17) | 8.2 (0.32)  | 19.5 (0.77) | 1.0 (0.04) | M4        | #8    |
| Y5.5-4SB    | 4.0-6.0    | 12-10 | 3.6 (0.14)          | 4.3 (0.17) | 6.3 (0.25)  | 19.5 (0.77) | 1.0 (0.04) | M4        | #8    |
| Y5.5-5B     | 4.0-6.0    | 12-10 | 3.6 (0.14)          | 5.3 (0.21) | 9.0 (0.35)  | 19.5 (0.77) | 1.0 (0.04) | M5        | #10   |
| Y5.5-6B     | 4.0-6.0    | 12-10 | 3.6 (0.14)          | 6.4 (0.25) | 12.0 (0.47) | 23.1 (0.91) | 1.0 (0.04) | M6        | 1/4"  |
| Y5.5-6SB    | 4.0-6.0    | 12-10 | 3.6 (0.14)          | 6.4 (0.25) | 9.0 (0.35)  | 23.0 (0.91) | 1.0 (0.04) | M6        | 1/4"  |
| Y5.5-8B     | 4.0-6.0    | 12-10 | 3.6 (0.14)          | 8.4 (0.33) | 13.5 (0.53) | 25.0 (0.98) | 1.0 (0.04) | M8        | 5/16" |

# VINYL-INSULATED SPADE TERMINALS

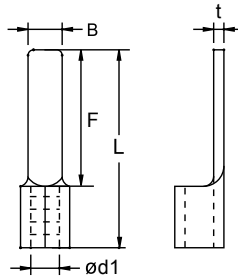
- Fork design provides fast and easy installation without removing the fastener
- Insulation support helps to prevent wire damage in bending applications
- Material: Copper tube with tin plated end sleeves with insulation PVC



| Part No.    | Color  | Wire Range |       | Dimension mm (inch) |            |             |            | Stud Size |       |
|-------------|--------|------------|-------|---------------------|------------|-------------|------------|-----------|-------|
|             |        | sq. mm.    | AWG   | B                   | d2         | L           | t          | mm        | inch  |
| VY1.25-3    | Red    | 0.5-1.5    | 22-16 | 5.7 (0.22)          | 3.2 (0.13) | 22.0 (0.87) | 0.8 (0.03) | M3        | #5    |
| VY1.25-3.5  | Red    | 0.5-1.5    | 22-16 | 6.2 (0.24)          | 3.7 (0.15) | 22.0 (0.87) | 0.8 (0.03) | M3.5      | #6    |
| VY1.25-3.5S | Red    | 0.5-1.5    | 22-16 | 5.7 (0.22)          | 3.7 (0.15) | 22.0 (0.87) | 0.8 (0.03) | M3.5      | #6    |
| VY1.25-4    | Red    | 0.5-1.5    | 22-16 | 7.2 (0.28)          | 4.3 (0.17) | 22.0 (0.87) | 0.8 (0.03) | M4        | #8    |
| VY1.25-4S   | Red    | 0.5-1.5    | 22-16 | 6.4 (0.25)          | 4.3 (0.17) | 22.0 (0.87) | 0.8 (0.03) | M4        | #8    |
| VY1.25-5    | Red    | 0.5-1.5    | 22-16 | 8.0 (0.31)          | 5.3 (0.21) | 22.0 (0.87) | 0.8 (0.03) | M5        | #10   |
| VY1.25-6    | Red    | 0.5-1.5    | 22-16 | 10.7 (0.42)         | 6.4 (0.25) | 23.0 (0.91) | 0.8 (0.03) | M6        | 1/4"  |
| VY1.25-6S   | Red    | 0.5-1.5    | 22-16 | 9.3 (0.37)          | 6.4 (0.25) | 23.0 (0.91) | 0.8 (0.03) | M6        | 1/4"  |
| VY1.25-8    | Red    | 0.5-1.5    | 22-16 | 13.5 (0.53)         | 8.4 (0.33) | 28.0 (1.10) | 0.8 (0.03) | M8        | 5/16" |
| VY2-3       | Blue   | 1.5-2.5    | 16-14 | 5.7 (0.22)          | 3.2 (0.13) | 22.5 (0.89) | 0.8 (0.03) | M3        | #5    |
| VY2-3.5     | Blue   | 1.5-2.5    | 16-14 | 6.2 (0.24)          | 3.7 (0.15) | 22.5 (0.89) | 0.8 (0.03) | M3.5      | #6    |
| VY2-3.5S    | Blue   | 1.5-2.5    | 16-14 | 5.7 (0.22)          | 3.7 (0.15) | 22.5 (0.89) | 0.8 (0.03) | M3.5      | #6    |
| VY2-4       | Blue   | 1.5-2.5    | 16-14 | 7.2 (0.28)          | 4.3 (0.17) | 22.5 (0.89) | 0.8 (0.03) | M4        | #8    |
| VY2-4S      | Blue   | 1.5-2.5    | 16-14 | 6.4 (0.25)          | 4.3 (0.17) | 22.5 (0.89) | 0.8 (0.03) | M4        | #8    |
| VY2-5       | Blue   | 1.5-2.5    | 16-14 | 8.0 (0.31)          | 5.3 (0.21) | 22.5 (0.89) | 0.8 (0.03) | M5        | #10   |
| VY2-6       | Blue   | 1.5-2.5    | 16-14 | 10.7 (0.42)         | 6.4 (0.25) | 23.5 (0.93) | 0.8 (0.03) | M6        | 1/4"  |
| VY2-6S      | Blue   | 1.5-2.5    | 16-14 | 9.3 (0.37)          | 6.4 (0.25) | 23.5 (0.93) | 0.8 (0.03) | M6        | 1/4"  |
| VY2-8       | Blue   | 1.5-2.5    | 16-14 | 13.5 (0.53)         | 8.4 (0.33) | 28.5 (1.12) | 0.8 (0.03) | M8        | 5/16" |
| VY5.5-3     | Yellow | 4.0-6.0    | 12-10 | 7.3 (0.29)          | 3.2 (0.13) | 26.7 (1.05) | 1.0 (0.04) | M3        | #5    |
| VY5.5-3.5   | Yellow | 4.0-6.0    | 12-10 | 8.1 (0.32)          | 3.7 (0.15) | 26.7 (1.05) | 1.0 (0.04) | M3.5      | #6    |
| VY5.5-3.5S  | Yellow | 4.0-6.0    | 12-10 | 6.3 (0.25)          | 3.7 (0.15) | 26.7 (1.05) | 1.0 (0.04) | M3.5      | #6    |
| VY5.5-4     | Yellow | 4.0-6.0    | 12-10 | 8.2 (0.32)          | 4.3 (0.17) | 26.7 (1.05) | 1.0 (0.04) | M4        | #8    |
| VY5.5-4S    | Yellow | 4.0-6.0    | 12-10 | 6.3 (0.25)          | 4.3 (0.17) | 26.7 (1.05) | 1.0 (0.04) | M4        | #8    |
| VY5.5-5     | Yellow | 4.0-6.0    | 12-10 | 9.0 (0.35)          | 5.3 (0.21) | 26.7 (1.05) | 1.0 (0.04) | M5        | #10   |
| VY5.5-6     | Yellow | 4.0-6.0    | 12-10 | 12.0 (0.47)         | 6.4 (0.25) | 30.7 (1.21) | 1.0 (0.04) | M6        | 1/4"  |
| VY5.5-6S    | Yellow | 4.0-6.0    | 12-10 | 9.0 (0.35)          | 6.4 (0.25) | 30.7 (1.21) | 1.0 (0.04) | M6        | 1/4"  |
| VY5.5-8     | Yellow | 4.0-6.0    | 12-10 | 13.5 (0.53)         | 8.4 (0.33) | 32.6 (1.28) | 1.0 (0.04) | M8        | 5/16" |

# NON-INSULATED BLADE TERMINALS

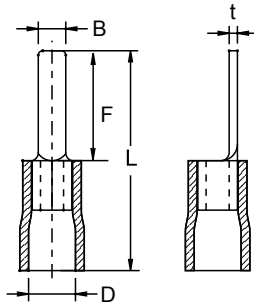
- Flat blade design to prevent damage to the wire from over tightening, resulting in a reliable electrical connection
- For use with blade-type terminal blocks
- Brazed seam protects terminal barrel from splitting during the crimping process
- Material: Copper



| Part No.    | Wire Range |       | Dimension mm (inch) |            |             |             |            |
|-------------|------------|-------|---------------------|------------|-------------|-------------|------------|
|             | sq. mm.    | AWG   | d1                  | B          | F           | L           | t          |
| B1.25-9SB   | 0.5-1.5    | 22-16 | 1.9 (0.07)          | 2.3 (0.09) | 9.0 (0.35)  | 14.0 (0.55) | 0.8 (0.03) |
| B1.25-9B    | 0.5-1.5    | 22-16 | 1.9 (0.07)          | 2.7 (0.11) | 9.0 (0.35)  | 14.0 (0.55) | 0.8 (0.03) |
| B1.25-12B   | 0.5-1.5    | 22-16 | 1.9 (0.07)          | 3.0 (0.12) | 12.0 (0.47) | 16.0 (0.63) | 0.8 (0.03) |
| B1.25-14.5B | 0.5-1.5    | 22-16 | 1.9 (0.07)          | 3.0 (0.12) | 14.5 (0.57) | 19.5 (0.77) | 0.8 (0.03) |
| B1.25-18B   | 0.5-1.5    | 22-16 | 1.9 (0.07)          | 2.5 (0.10) | 18.0 (0.71) | 23.0 (0.91) | 0.8 (0.03) |
| B2-9B       | 1.5-2.5    | 16-14 | 2.5 (0.10)          | 2.8 (0.11) | 9.0 (0.35)  | 14.0 (0.55) | 0.8 (0.03) |
| B2-16B      | 1.5-2.5    | 16-14 | 2.5 (0.10)          | 2.9 (0.11) | 16.0 (0.63) | 21.0 (0.83) | 0.8 (0.03) |
| B2-18B      | 1.5-2.5    | 16-14 | 2.5 (0.10)          | 2.5 (0.10) | 18.0 (0.71) | 23.0 (0.91) | 0.8 (0.03) |
| B5.5-10B    | 4.0-6.0    | 12-10 | 3.6 (0.14)          | 2.8 (0.11) | 10.0 (0.39) | 16.5 (0.65) | 1.0 (0.04) |
| B5.5-13B    | 4.0-6.0    | 12-10 | 3.6 (0.14)          | 4.6 (0.18) | 13.0 (0.51) | 19.5 (0.77) | 1.0 (0.04) |
| B5.5-18B    | 4.0-6.0    | 12-10 | 3.6 (0.14)          | 4.5 (0.18) | 18.0 (0.71) | 24.5 (0.96) | 1.0 (0.04) |

# VINYL-INSULATED BLADE TERMINALS

- Flat blade design to prevent damage to the wire from over tightening, resulting in a reliable electrical connection
- For use with blade-type terminal blocks
- Insulation support helps to prevent wire damage in bending applications
- Material: Copper tube with tin plated end sleeves with insulation PVC

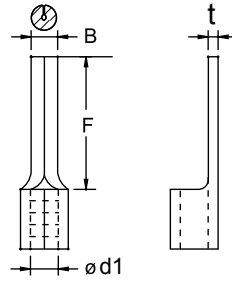


| Part No.    | Color  | Wire Range |       | Dimension mm (inch) |            |             |             |            |
|-------------|--------|------------|-------|---------------------|------------|-------------|-------------|------------|
|             |        | sq. mm.    | AWG   | D                   | B          | F           | L           | t          |
| VB1.25-9S   | Red    | 0.5-1.5    | 22-16 | 4.3 (0.17)          | 2.3 (0.09) | 9.0 (0.35)  | 19.5 (0.77) | 0.8 (0.03) |
| VB1.25-9    | Red    | 0.5-1.5    | 22-16 | 4.3 (0.17)          | 2.7 (0.11) | 9.0 (0.35)  | 19.5 (0.77) | 0.8 (0.03) |
| VB1.25-12   | Red    | 0.5-1.5    | 22-16 | 4.3 (0.17)          | 3.0 (0.12) | 12.0 (0.47) | 25.0 (0.98) | 0.8 (0.03) |
| VB1.25-14.5 | Red    | 0.5-1.5    | 22-16 | 4.3 (0.17)          | 3.0 (0.12) | 14.5 (0.57) | 21.5 (0.85) | 0.8 (0.03) |
| VB1.25-18   | Red    | 0.5-1.5    | 22-16 | 4.3 (0.17)          | 2.5 (0.10) | 18.0 (0.71) | 28.5 (1.12) | 0.8 (0.03) |
| VB2-9       | Blue   | 1.5-2.5    | 16-14 | 4.7 (0.19)          | 2.8 (0.11) | 9.0 (0.35)  | 20.0 (0.79) | 0.8 (0.03) |
| VB2-16      | Blue   | 1.5-2.5    | 16-14 | 4.7 (0.19)          | 2.9 (0.11) | 16.0 (0.63) | 27.0 (1.06) | 0.8 (0.03) |
| VB2-18      | Blue   | 1.5-2.5    | 16-14 | 4.7 (0.19)          | 2.5 (0.10) | 18.0 (0.71) | 29.0 (1.14) | 0.8 (0.03) |
| VB5.5-10    | Yellow | 4.0-6.0    | 12-10 | 6.7 (0.26)          | 2.8 (0.11) | 10.0 (0.39) | 24.0 (0.94) | 1.0 (0.04) |
| VB5.5-13    | Yellow | 4.0-6.0    | 12-10 | 6.7 (0.26)          | 4.5 (0.18) | 13.0 (0.51) | 27.0 (1.06) | 1.0 (0.04) |
| VB5.5-18    | Yellow | 4.0-6.0    | 12-10 | 6.7 (0.26)          | 4.5 (0.18) | 18.0 (0.71) | 32.0 (1.26) | 1.0 (0.04) |



## NON-INSULATED PIN TERMINALS

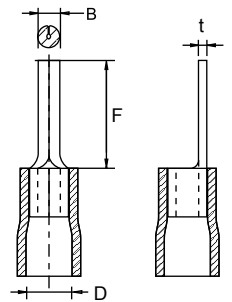
- Solid pin designed to prevent damage to the wire from over tightening, resulting in a reliable electrical connection
- Brazed seam protects terminal barrel from splitting during the crimping process
- Material: Copper



| Part No.   | Wire Range |       | Dimension mm (inch) |            |             |            |
|------------|------------|-------|---------------------|------------|-------------|------------|
|            | sq. mm.    | AWG   | d1                  | B          | F           | t          |
| P1.25-9B   | 0.5-1.5    | 22-16 | 1.9 (0.07)          | 2.0 (0.08) | 9.0 (0.35)  | 0.8 (0.03) |
| P1.25-12B  | 0.5-1.5    | 22-16 | 1.9 (0.07)          | 2.0 (0.08) | 12.0 (0.47) | 0.8 (0.03) |
| P2-9B      | 1.5-2.5    | 16~14 | 2.5 (0.10)          | 2.0 (0.08) | 9.0 (0.35)  | 0.8 (0.03) |
| P2-12B     | 1.5-2.5    | 16~14 | 2.5 (0.10)          | 2.0 (0.08) | 12.0 (0.47) | 0.8 (0.03) |
| P5.5-13.5B | 4.0-6.0    | 12~10 | 3.7 (0.15)          | 2.7 (0.11) | 13.5 (0.53) | 1.0 (0.04) |

## VINYL-INSULATED PIN TERMINALS

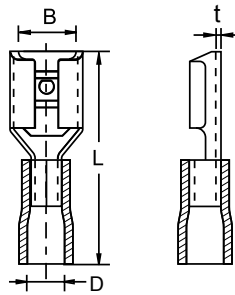
- Solid pin designed to prevent damage to the wire from over tightening, resulting in a reliable electrical connection
- Insulation support helps to prevent wire damage in bending applications
- Material: Copper tube with tin plated end sleeves with insulation PVC



| Part No.   | Color  | Wire Range |       | Dimension mm (inch) |            |             |            |
|------------|--------|------------|-------|---------------------|------------|-------------|------------|
|            |        | sq. mm.    | AWG   | D                   | B          | F           | t          |
| VP1.25-9   | Red    | 0.5-1.5    | 22-16 | 4.3 (0.17)          | 2.0 (0.08) | 9.0 (0.35)  | 0.8 (0.03) |
| VP1.25-12  | Red    | 0.5-1.5    | 22-16 | 4.3 (0.17)          | 2.0 (0.08) | 12.0 (0.47) | 0.8 (0.03) |
| VP2-9      | Blue   | 1.5-2.5    | 16-14 | 4.7 (0.19)          | 2.0 (0.08) | 9.0 (0.35)  | 0.8 (0.03) |
| VP2-12     | Blue   | 1.5-2.5    | 16-14 | 4.7 (0.19)          | 2.0 (0.08) | 12.0 (0.47) | 0.8 (0.03) |
| VP5.5-13.5 | Yellow | 4.0-6.0    | 12-10 | 6.7 (0.26)          | 2.7 (0.11) | 13.5 (0.53) | 1.0 (0.04) |

# VINYL-INSULATED FEMALE DISCONNECTORS

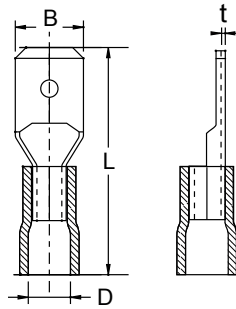
- Disconnect can be inserted and removed from the male tab without the use of tools for lower installation cost
- Metal insulation grip sleeve crimps to wire insulation, providing protection to the crimp joint during high vibration applications
- Internal wire stop assures proper length of insertion into terminal barrel, providing a higher quality connection
- Material: Brass, PVC



| Part No.    | Color  | Wire Range |       | Dimension mm (inch) |            |            |             |            |
|-------------|--------|------------|-------|---------------------|------------|------------|-------------|------------|
|             |        | sq. mm.    | AWG   | Tab size            | D          | B          | L           | t          |
| VU1.25-2.8S | Red    | 0.5-1.5    | 22-16 | 2.8x0.5 (0.11x0.02) | 3.6 (0.14) | 3.2 (0.13) | 18.5 (0.73) | 0.3 (0.01) |
| VU1.25-2.8  | Red    | 0.5-1.5    | 22-16 | 2.8x0.8 (0.11x0.03) | 3.6 (0.14) | 3.2 (0.13) | 18.5 (0.73) | 0.3 (0.01) |
| VU1.25-4.8S | Red    | 0.5-1.5    | 22-16 | 4.8x0.5 (0.19x0.02) | 3.6 (0.14) | 5.0 (0.20) | 19.0 (0.75) | 0.4 (0.02) |
| VU1.25-4.8  | Red    | 0.5-1.5    | 22-16 | 4.8x0.8 (0.19x0.03) | 3.6 (0.14) | 5.0 (0.20) | 19.0 (0.75) | 0.4 (0.02) |
| VU1.25-5.2  | Red    | 0.5-1.5    | 22-16 | 5.2x0.5 (0.20x0.02) | 3.6 (0.14) | 5.6 (0.22) | 20.0 (0.79) | 0.4 (0.02) |
| VU1.25-6.4  | Red    | 0.5-1.5    | 22-16 | 6.4x0.8 (0.25x0.03) | 3.6 (0.14) | 6.7 (0.26) | 21.0 (0.83) | 0.4 (0.02) |
| VU2-2.8S    | Blue   | 1.5-2.5    | 16-14 | 2.8x0.5 (0.11x0.02) | 4.4 (0.17) | 3.2 (0.13) | 18.5 (0.73) | 0.3 (0.01) |
| VU2-2.8     | Blue   | 1.5-2.5    | 16-14 | 2.8x0.8 (0.11x0.03) | 4.4 (0.17) | 3.2 (0.13) | 18.5 (0.73) | 0.3 (0.01) |
| VU2-4.8S    | Blue   | 1.5-2.5    | 16-14 | 4.8x0.5 (0.19x0.02) | 4.4 (0.17) | 5.0 (0.20) | 19.0 (0.75) | 0.4 (0.02) |
| VU2-4.8     | Blue   | 1.5-2.5    | 16-14 | 4.8x0.8 (0.19x0.03) | 4.4 (0.17) | 5.0 (0.20) | 19.0 (0.75) | 0.4 (0.02) |
| VU2-5.2     | Blue   | 1.5-2.5    | 16-14 | 5.2x0.5 (0.20x0.02) | 4.4 (0.17) | 5.6 (0.22) | 20.0 (0.79) | 0.4 (0.02) |
| VU2-6.4     | Blue   | 1.5-2.5    | 16-14 | 6.4x0.8 (0.25x0.03) | 4.4 (0.17) | 6.7 (0.26) | 21.0 (0.83) | 0.4 (0.02) |
| VU5.5-2.8S  | Yellow | 4.0-6.0    | 12-10 | 2.8x0.5 (0.11x0.02) | 5.4 (0.21) | 3.2 (0.13) | 22.0 (0.87) | 0.4 (0.02) |
| VU5.5-2.8   | Yellow | 4.0-6.0    | 12-10 | 2.8x0.8 (0.11x0.03) | 5.4 (0.21) | 3.2 (0.13) | 22.0 (0.87) | 0.4 (0.02) |
| VU5.5-4.8S  | Yellow | 4.0-6.0    | 12-10 | 4.8x0.5 (0.19x0.02) | 5.4 (0.21) | 5.0 (0.20) | 22.0 (0.87) | 0.4 (0.02) |
| VU5.5-4.8   | Yellow | 4.0-6.0    | 12-10 | 4.8x0.8 (0.19x0.03) | 5.4 (0.21) | 5.0 (0.20) | 22.0 (0.87) | 0.4 (0.02) |
| VU5.5-6.4   | Yellow | 4.0-6.0    | 12-10 | 6.4x0.8 (0.25x0.03) | 5.4 (0.21) | 6.7 (0.26) | 25.0 (0.98) | 0.4 (0.02) |
| VU5.5-9.4   | Yellow | 4.0-6.0    | 12-10 | 9.4x1.2 (0.37x0.05) | 5.4 (0.21) | 9.9 (0.39) | 29.0 (1.14) | 0.5 (0.02) |

# VINYL-INSULATED MALE DISCONNECTS

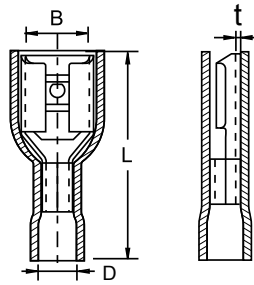
- Male tab couples with female disconnects
- Male tab can be inserted and removed from the female disconnect without the use of tools for lower installation cost
- Metal insulation grip sleeve crimps to wire insulation, providing protection to the crimp joint during high vibration applications
- Material: Brass, PVC



| Part No.    | Color  | Wire Range |       | Dimension mm (inch) |            |            |             |            |
|-------------|--------|------------|-------|---------------------|------------|------------|-------------|------------|
|             |        | sq. mm.    | AWG   | Tab size            | D          | B          | L           | t          |
| VT1.25-2.8S | Red    | 0.5-1.5    | 22-16 | 2.8x0.5 (0.11x0.02) | 3.6 (0.14) | 2.9 (0.11) | 21.5 (0.85) | 0.3 (0.01) |
| VT1.25-2.8  | Red    | 0.5-1.5    | 22-16 | 2.8x0.8 (0.11x0.03) | 3.6 (0.14) | 2.9 (0.11) | 21.5 (0.85) | 0.4 (0.02) |
| VT1.25-4.8S | Red    | 0.5-1.5    | 22-16 | 4.8x0.5 (0.19x0.02) | 3.6 (0.14) | 4.8 (0.19) | 21.5 (0.85) | 0.3 (0.01) |
| VT1.25-4.8  | Red    | 0.5-1.5    | 22-16 | 4.8x0.8 (0.19x0.03) | 3.6 (0.14) | 4.8 (0.19) | 21.5 (0.85) | 0.4 (0.02) |
| VT1.25-6.4  | Red    | 0.5-1.5    | 22-16 | 6.4x0.8 (0.25x0.03) | 3.6 (0.14) | 6.4 (0.25) | 21.5 (0.85) | 0.4 (0.02) |
| VT2-2.8S    | Blue   | 1.5-2.5    | 16-14 | 2.8x0.5 (0.11x0.02) | 4.4 (0.17) | 2.9 (0.11) | 22.0 (0.87) | 0.3 (0.01) |
| VT2-2.8     | Blue   | 1.5-2.5    | 16-14 | 2.8x0.8 (0.11x0.03) | 4.4 (0.17) | 2.9 (0.11) | 22.0 (0.87) | 0.4 (0.02) |
| VT2-4.8S    | Blue   | 1.5-2.5    | 16-14 | 4.8x0.5 (0.19x0.02) | 4.4 (0.17) | 4.8 (0.19) | 22.0 (0.87) | 0.3 (0.01) |
| VT2-4.8     | Blue   | 1.5-2.5    | 16-14 | 4.8x0.8 (0.19x0.03) | 4.4 (0.17) | 4.8 (0.19) | 22.0 (0.87) | 0.4 (0.02) |
| VT2-6.4     | Blue   | 1.5-2.5    | 16-14 | 6.4x0.8 (0.25x0.03) | 4.4 (0.17) | 6.4 (0.25) | 22.0 (0.87) | 0.4 (0.02) |
| VT5.5-2.8S  | Yellow | 4.0-6.0    | 12-10 | 2.8x0.5 (0.11x0.02) | 5.4 (0.21) | 2.9 (0.11) | 23.5 (0.93) | 0.3 (0.01) |
| VT5.5-2.8   | Yellow | 4.0-6.0    | 12-10 | 2.8x0.8 (0.11x0.03) | 5.4 (0.21) | 2.9 (0.11) | 23.5 (0.93) | 0.4 (0.02) |
| VT5.5-4.8S  | Yellow | 4.0-6.0    | 12-10 | 4.8x0.5 (0.19x0.02) | 5.4 (0.21) | 4.8 (0.19) | 23.5 (0.93) | 0.3 (0.01) |
| VT5.5-4.8   | Yellow | 4.0-6.0    | 12-10 | 4.8x0.8 (0.19x0.03) | 5.4 (0.21) | 4.8 (0.19) | 23.5 (0.93) | 0.4 (0.02) |
| VT5.5-6.4   | Yellow | 4.0-6.0    | 12-10 | 6.4x0.8 (0.25x0.03) | 5.4 (0.21) | 6.4 (0.25) | 23.5 (0.93) | 0.4 (0.02) |

# VINYL-FULLY INSULATED FEMALE DISCONNECTORS

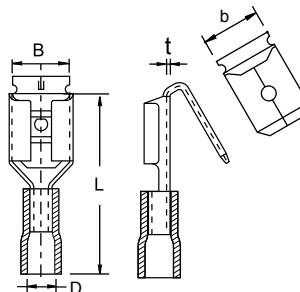
- Disconnect can be inserted and removed from the male tab without the use of tools for lower installation cost
- Fully insulated design provides protection from electrical shorts
- Internal wire stop assures proper length of insertion into terminal barrel, providing a higher quality connection
- Material: Brass, PVC



| Part No.     | Color  | Wire Range |       | Dimension mm (inch) |            |            |             |            |  |
|--------------|--------|------------|-------|---------------------|------------|------------|-------------|------------|--|
|              |        | sq. mm.    | AWG   | Tab size            | D          | B          | L           | t          |  |
| FVU1.25-4.8S | Red    | 0.5-1.5    | 22-16 | 4.8x0.5 (0.19x0.02) | 4.0 (0.16) | 5.0 (0.20) | 20.0 (0.79) | 0.4 (0.02) |  |
| FVU1.25-4.8  | Red    | 0.5-1.5    | 22-16 | 4.8x0.8 (0.19x0.03) | 4.0 (0.16) | 5.0 (0.20) | 20.0 (0.79) | 0.4 (0.02) |  |
| FVU1.25-6.4  | Red    | 0.5-1.5    | 22-16 | 6.4x0.8 (0.25x0.03) | 4.0 (0.16) | 6.7 (0.26) | 22.0 (0.87) | 0.4 (0.02) |  |
| FVU2-4.8S    | Blue   | 1.5-2.5    | 16-14 | 4.8x0.5 (0.19x0.02) | 4.5 (0.18) | 5.0 (0.20) | 20.0 (0.79) | 0.4 (0.02) |  |
| FVU2-4.8     | Blue   | 1.5-2.5    | 16-14 | 4.8x0.8 (0.19x0.03) | 4.5 (0.18) | 5.0 (0.20) | 20.0 (0.79) | 0.4 (0.02) |  |
| FVU2-6.4     | Blue   | 1.5-2.5    | 16-14 | 6.4x0.8 (0.25x0.03) | 4.5 (0.18) | 6.7 (0.26) | 22.5 (0.89) | 0.4 (0.02) |  |
| FVU5.5-4.8S  | Yellow | 4.0-6.0    | 12-10 | 4.8x0.5 (0.19x0.02) | 5.5 (0.22) | 5.0 (0.20) | 23.5 (0.93) | 0.4 (0.02) |  |
| FVU5.5-4.8   | Yellow | 4.0-6.0    | 12-10 | 4.8x0.8 (0.19x0.03) | 5.5 (0.22) | 5.0 (0.20) | 23.5 (0.93) | 0.4 (0.02) |  |
| FVU5.5-6.4   | Yellow | 4.0-6.0    | 12-10 | 6.4x0.8 (0.25x0.03) | 5.5 (0.22) | 6.7 (0.26) | 24.0 (0.94) | 0.4 (0.02) |  |

# VINYL-INSULATED PIGGYBACK DISCONNECTORS

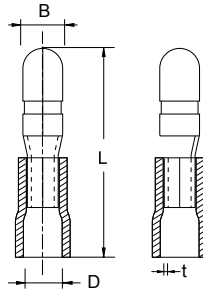
- Combination of female disconnect and male tab allows versatility in points of connection
- Multiple connection points allow additional circuits to be added to existing equipment without expensive rework
- Metal insulation grip sleeve crimps to wire insulation, providing protection to the crimp joint during high vibration applications
- Material: Brass, PVC



| Part No.    | Color  | Wire Range |       | Dimension mm (inch) |            |            |             |            |            |
|-------------|--------|------------|-------|---------------------|------------|------------|-------------|------------|------------|
|             |        | sq. mm.    | AWG   | Tab size            | D          | B          | L           | b          | t          |
| VPB1.25-6.4 | Red    | 0.5-1.5    | 22-16 | 6.4x0.8 (0.25x0.03) | 3.6 (0.14) | 6.7 (0.26) | 22.0 (0.87) | 6.4 (0.25) | 0.4 (0.02) |
| VPB2-6.4    | Blue   | 1.5-2.5    | 16-14 | 6.4x0.8 (0.25x0.03) | 4.4 (0.17) | 6.7 (0.26) | 22.0 (0.87) | 6.4 (0.25) | 0.4 (0.02) |
| VPB5.5-6.4  | Yellow | 4.0-6.0    | 12-10 | 6.4x0.8 (0.25x0.03) | 5.4 (0.21) | 6.7 (0.26) | 23.0 (0.91) | 6.4 (0.25) | 0.4 (0.02) |

## VINYL-INSULATED MALE BULLET CONNECTORS

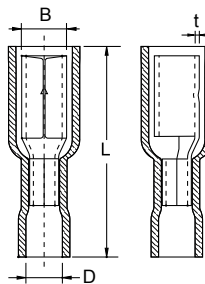
- Male bullet connector couples with female one
- Male bullet connector can be inserted and removed from the female disconnect without the use of tools for lower installation cost
- Metal insulation grip sleeve crimps to wire insulation, providing protection to the crimp joint during high vibration applications
- Material: Brass, PVC



| Part No.    | Color  | Wire Range |       | Dimension mm (inch) |            |             |            |
|-------------|--------|------------|-------|---------------------|------------|-------------|------------|
|             |        | sq. mm.    | AWG   | D                   | B          | L           | t          |
| VBT1.25-156 | Red    | 0.5-1.5    | 22-16 | 3.6 (0.14)          | 4.0 (0.16) | 21.5 (0.85) | 0.4 (0.02) |
| VBT2-156    | Blue   | 1.5-2.5    | 16-14 | 4.4 (0.17)          | 4.0 (0.16) | 22.0 (0.87) | 0.4 (0.02) |
| VBT2-195    | Blue   | 1.5-2.5    | 16-14 | 4.4 (0.17)          | 5.0 (0.20) | 22.0 (0.87) | 0.4 (0.02) |
| VBT5.5-156  | Yellow | 4.0-6.0    | 12-10 | 5.4 (0.21)          | 4.0 (0.16) | 25.0 (0.98) | 0.4 (0.02) |
| VBT5.5-195  | Yellow | 4.0-6.0    | 12-10 | 5.4 (0.21)          | 5.0 (0.20) | 25.0 (0.98) | 0.4 (0.02) |

## VINYL-FULLY INSULATED FEMALE BULLET CONNECTORS

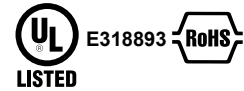
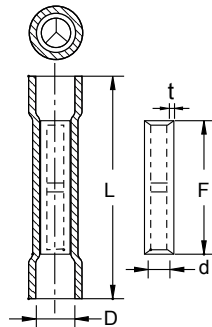
- Disconnect can be inserted and removed from the male bullet without the use of tools for lower installation cost
- Metal insulation grip sleeve crimps to wire insulation, providing protection to the crimp joint during high vibration applications
- Internal wire stop assures proper length of insertion into terminal barrel, providing a higher quality connection
- Material: Brass, PVC



| Part No.     | Color  | Wire Range |       | Dimension mm (inch) |            |             |            |
|--------------|--------|------------|-------|---------------------|------------|-------------|------------|
|              |        | sq. mm.    | AWG   | D                   | B          | L           | t          |
| FVBU1.25-156 | Red    | 0.5-1.5    | 22-16 | 3.3 (0.13)          | 4.7 (0.19) | 23.0 (0.91) | 0.4 (0.02) |
| FVBU2-156    | Blue   | 1.5-2.5    | 16-14 | 4.0 (0.16)          | 4.7 (0.19) | 23.5 (0.93) | 0.4 (0.02) |
| FVBU2-195    | Blue   | 1.5-2.5    | 16-14 | 4.0 (0.16)          | 4.7 (0.19) | 23.5 (0.93) | 0.4 (0.02) |
| FVBU5.5-156  | Yellow | 4.0-6.0    | 12-10 | 6.0 (0.24)          | 4.7 (0.19) | 27.5 (1.08) | 0.4 (0.02) |
| FVBU5.5-195  | Yellow | 4.0-6.0    | 12-10 | 5.3 (0.21)          | 5.7 (0.22) | 23.5 (0.93) | 0.4 (0.02) |

# VINYL-INSULATED BUTT SPLICES

- Expanded wire entry designed to accommodate wires with a larger insulation thickness
- Designed to splice two solid or stranded wires together to repair or lengthen wires
- Brazed seam protects terminal barrel from splitting during the crimping process
- Internal wire stop assures proper length of insertion into terminal barrel
- Material: Copper tube with tin plated end sleeves with insulation PVC

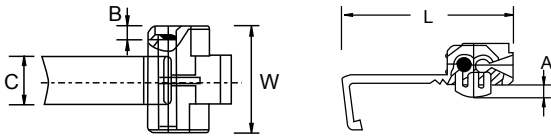


| Part No. | Material       | Color  | Wire Range |       | Dimension mm (inch) |             |             |             |            |
|----------|----------------|--------|------------|-------|---------------------|-------------|-------------|-------------|------------|
|          |                |        | sq. mm.    | AWG   | D                   | d           | L           | F           | t          |
| VI1.25S  | Copper Plate   | Red    | 0.5-1.5    | 22-16 | 4.0 (0.16)          | 1.8 (0.07)  | 24.0 (0.94) | 15.0 (0.59) | 0.5 (0.02) |
| VI1.25M  | Copper Plate   | Red    | 0.5-1.5    | 22-16 | 4.3 (0.17)          | 2.1 (0.08)  | 25.0 (0.98) | 15.0 (0.59) | 0.7 (0.03) |
| VI1.25   | Copper Plate   | Red    | 0.5-1.5    | 22-16 | 4.3 (0.17)          | 1.7 (0.07)  | 25.0 (0.98) | 15.0 (0.59) | 0.8 (0.03) |
| VI1.25T  | Copper Tubular | Red    | 0.5-1.5    | 22-16 | 4.3 (0.17)          | 1.7 (0.07)  | 25.0 (0.98) | 15.0 (0.59) | 0.8 (0.03) |
| VI2S     | Copper Plate   | Blue   | 1.5-2.5    | 16-14 | 4.3 (0.17)          | 2.3 (0.09)  | 24.0 (0.94) | 15.0 (0.59) | 0.5 (0.02) |
| VI2M     | Copper Plate   | Blue   | 1.5-2.5    | 16-14 | 4.5 (0.18)          | 2.8 (0.11)  | 25.0 (0.98) | 15.0 (0.59) | 0.7 (0.03) |
| VI2      | Copper Plate   | Blue   | 1.5-2.5    | 16-14 | 4.5 (0.18)          | 2.3 (0.09)  | 25.0 (0.98) | 15.0 (0.59) | 0.8 (0.03) |
| VI2T     | Copper Tubular | Blue   | 1.5-2.5    | 16-14 | 4.5 (0.18)          | 2.4 (0.09)  | 25.0 (0.98) | 15.0 (0.59) | 0.8 (0.03) |
| VI5.5S   | Copper Plate   | Yellow | 4.0-6.0    | 12-10 | 6.3 (0.25)          | 3.8 (0.15)  | 25.5 (1.00) | 15.0 (0.59) | 0.5 (0.02) |
| VI5.5M   | Copper Plate   | Yellow | 4.0-6.0    | 12-10 | 6.5 (0.26)          | 3.8 (0.15)  | 27.0 (1.06) | 15.0 (0.59) | 0.8 (0.03) |
| VI5.5    | Copper Plate   | Yellow | 4.0-6.0    | 12-10 | 6.5 (0.26)          | 3.4 (0.13)  | 27.0 (1.06) | 15.0 (0.59) | 1.0 (0.04) |
| VI5.5T   | Copper Tubular | Yellow | 4.0-6.0    | 12-10 | 6.5 (0.26)          | 3.57 (0.14) | 27.0 (1.06) | 15.0 (0.59) | 1.0 (0.04) |

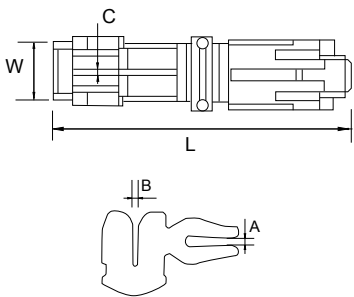
# QUICK SPLICES

- Metal connector can cut through the insulation of both wires and make a firm electrical connection between them, all in one action
- The folding cover of the connector can be closed to provide further protection of the connection

QST Type



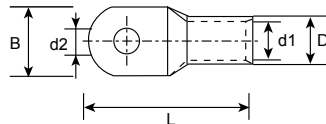
QSA Type



| Part No. | Color  | Wire Range<br>AWG | Dimension mm (inch) |            |             |             |             |
|----------|--------|-------------------|---------------------|------------|-------------|-------------|-------------|
|          |        |                   | A                   | B          | C           | W           | L           |
| QST1.25  | Red    | 22-16             | 4.0 (0.16)          | 4.0 (0.16) | 10.6 (0.42) | 19.6 (0.77) | 31.2 (1.23) |
| QST2     | Blue   | 16-14             | 4.0 (0.16)          | 4.0 (0.16) | 10.6 (0.42) | 19.6 (0.77) | 31.3 (1.23) |
| QST5.5   | Yellow | 12-10             | 4.0 (0.16)          | 4.0 (0.16) | 20.0 (0.79) | 20.0 (0.79) | 31.6 (1.24) |
| QSA1.25  | Red    | 22-16             | 0.5 (0.02)          | 0.5 (0.02) | 0.8 (0.03)  | 9.4 (0.37)  | 35.0 (1.38) |
| QSA2     | Blue   | 16-14             | 0.5 (0.02)          | 0.7 (0.03) | 0.8 (0.03)  | 9.4 (0.37)  | 35.0 (1.38) |
| QSA5.5   | Yellow | 12-10             | 0.5 (0.02)          | 1.2 (0.05) | 0.8 (0.03)  | 9.4 (0.37)  | 35.0 (1.38) |

# COPPER/CABLE LUGS

- Made from superior grade of copper to ensure most efficient electrical conductivity
- Surface is electrolytically tin-plated to avoid oxidation
- Comply with DIN 46234 for wire containment
- Copper tube is special designed to reach the most strength to resist vibration and pull out
- The length of lug barrel is designed to allow easy and accurate crimping operation
- Material: Copper



| Part No. | Wire Range |         | Dimension mm (inch) |             |             |             |              |
|----------|------------|---------|---------------------|-------------|-------------|-------------|--------------|
|          | sq. mm.    | AWG     | d1                  | d2          | D           | B           | L            |
| SC10-6   | 10.0       | 8       | 5.0 (0.20)          | 6.4 (0.25)  | 7.0 (0.28)  | 12.4 (0.49) | 27.0 (1.06)  |
| SC10-8   | 10.0       | 8       | 5.0 (0.20)          | 8.4 (0.33)  | 7.0 (0.28)  | 12.4 (0.49) | 27.0 (1.06)  |
| SC16-8   | 16.0       | 6       | 5.8 (0.23)          | 8.4 (0.33)  | 7.8 (0.31)  | 12.4 (0.49) | 31.0 (1.22)  |
| SC25-8   | 25.0       | 4       | 7.5 (0.30)          | 8.4 (0.33)  | 9.5 (0.37)  | 15.5 (0.61) | 34.0 (1.34)  |
| SC35-8   | 35.0       | 2       | 8.6 (0.34)          | 8.4 (0.33)  | 11.4 (0.45) | 16.5 (0.65) | 38.0 (1.50)  |
| SC35-10  | 35.0       | 2       | 8.6 (0.34)          | 10.5 (0.41) | 11.4 (0.45) | 17.5 (0.69) | 40.5 (1.59)  |
| SC50-8   | 50.0       | 1       | 9.6 (0.38)          | 8.4 (0.33)  | 12.6 (0.50) | 18.0 (0.71) | 43.5 (1.71)  |
| SC50-10  | 50.0       | 1       | 9.6 (0.38)          | 10.5 (0.41) | 12.6 (0.50) | 18.0 (0.71) | 43.5 (1.71)  |
| SC50-12  | 50.0       | 1       | 9.6 (0.38)          | 13.0 (0.51) | 12.6 (0.50) | 18.0 (0.71) | 43.5 (1.71)  |
| SC70-10  | 70.0       | 2/0     | 12.0 (0.47)         | 10.5 (0.41) | 15.0 (0.59) | 21.8 (0.86) | 50.0 (1.97)  |
| SC95-10  | 95.0       | 3/0     | 13.5 (0.53)         | 10.5 (0.41) | 17.4 (0.69) | 25.0 (0.98) | 55.0 (2.17)  |
| SC95-12  | 95.0       | 3/0     | 13.5 (0.53)         | 13.0 (0.51) | 17.4 (0.69) | 25.0 (0.98) | 55.0 (2.17)  |
| SC120-10 | 120.0      | 4/0     | 15.0 (0.59)         | 10.5 (0.41) | 19.8 (0.78) | 28.4 (1.12) | 60.0 (2.36)  |
| SC120-12 | 120.0      | 4/0     | 15.0 (0.59)         | 13.0 (0.51) | 19.8 (0.78) | 28.4 (1.12) | 60.0 (2.36)  |
| SC120-14 | 120.0      | 4/0     | 15.0 (0.59)         | 15.0 (0.59) | 19.8 (0.78) | 28.4 (1.12) | 64.0 (2.52)  |
| SC150-12 | 150.0      | 250/300 | 16.5 (0.65)         | 13.0 (0.51) | 21.2 (0.83) | 30.5 (1.20) | 69.0 (2.72)  |
| SC150-14 | 150.0      | 250/300 | 16.5 (0.65)         | 15.0 (0.59) | 21.2 (0.83) | 30.5 (1.20) | 69.0 (2.72)  |
| SC150-16 | 150.0      | 250/300 | 16.5 (0.65)         | 17.0 (0.67) | 21.2 (0.83) | 30.5 (1.20) | 69.0 (2.72)  |
| SC185-12 | 185.0      | 300/350 | 18.5 (0.73)         | 15.0 (0.59) | 23.5 (0.93) | 34.0 (1.34) | 78.0 (3.07)  |
| SC185-14 | 185.0      | 300/350 | 18.5 (0.73)         | 15.0 (0.59) | 23.5 (0.93) | 34.0 (1.34) | 78.0 (3.07)  |
| SC185-16 | 185.0      | 300/350 | 18.5 (0.73)         | 17.0 (0.67) | 23.5 (0.93) | 34.0 (1.34) | 64.0 (2.52)  |
| SC240-12 | 240.0      | 400/450 | 21.5 (0.85)         | 13.0 (0.51) | 26.5 (1.04) | 39.0 (1.54) | 92.0 (3.62)  |
| SC240-14 | 240.0      | 400/450 | 21.5 (0.85)         | 15.0 (0.59) | 26.5 (1.04) | 39.0 (1.54) | 92.0 (3.62)  |
| SC240-16 | 240.0      | 400/450 | 21.5 (0.85)         | 17.0 (0.67) | 26.5 (1.04) | 39.0 (1.54) | 92.0 (3.62)  |
| SC300-12 | 300.0      | 500     | 23.5 (0.93)         | 13.0 (0.51) | 30.0 (1.18) | 43.0 (1.69) | 101.0 (3.98) |
| SC300-14 | 300.0      | 500     | 23.5 (0.93)         | 15.0 (0.59) | 30.0 (1.18) | 43.0 (1.69) | 101.0 (3.98) |
| SC300-16 | 300.0      | 500     | 23.5 (0.93)         | 17.0 (0.67) | 30.0 (1.18) | 43.0 (1.69) | 101.0 (3.98) |



# CHOICE AND CRIMPING OF TERMINALS

## Choice of The Connector

In order to obtain a connection that can be guaranteed for a long time it is necessary to select the connector suitable to the application field and strictly conformed to the section of the cable to be crimped (see the table below). In the large range of Hua Wei's products you will certainly find the ideal solution for every requirement.

| Conductor |              |               | Conductor |              |               | Conductor |              |               |
|-----------|--------------|---------------|-----------|--------------|---------------|-----------|--------------|---------------|
| AWG       | Area (sq.mm) | Diameter (mm) | AWG       | Area (sq.mm) | Diameter (mm) | MCM       | Area (sq.mm) | Diameter (mm) |
| 22        | 0.324        | 0.643         | 9         | 6.63         | 2.91          | 250       | 126.6        | 12.7          |
| 21        | 0.412        | 0.724         | 8         | 8.37         | 3.26          | 300       | 152.1        | 13.92         |
| 20        | 0.519        | 0.813         | 7         | 10.6         | 3.66          | 350       | 177.6        | 14.04         |
| 19        | 0.567        | 0.912         | 6         | 13.3         | 4.12          | 400       | 202.2        | 15.04         |
| 18        | 0.811        | 1.02          | 5         | 16.7         | 4.62          | 450       | 228          | 16.05         |
| 17        | 1.04         | 1.15          | 4         | 21.2         | 5.19          | 500       | 253.4        | 17.95         |
| 16        | 1.31         | 1.29          | 3         | 26.7         | 5.82          | 550       | 278.9        | 18.85         |
| 15        | 1.65         | 1.45          | 2         | 33.6         | 6.54          | 600       | 304.3        | 19.69         |
| 14        | 2.08         | 1.63          | 1         | 42.4         | 7.35          | 650       | 329.4        | 20.47         |
| 13        | 2.63         | 1.83          | 1/0       | 53.5         | 8.25          | 750       | 380          | 21.99         |
| 12        | 3.31         | 2.05          | 2/0       | 67.4         | 9.26          | 800       | 404.4        | 22.73         |
| 11        | 4.17         | 2.3           | 3/0       | 85.01        | 10.4          | 1000      | 506.8        | 25.43         |
| 10        | 5.26         | 2.59          | 4/0       | 107.2        | 11.68         | 1250      | 633.8        | 28.43         |

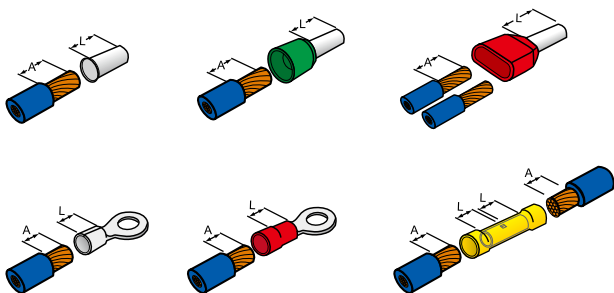
## Stripping

Every crimping operation requires that the cable is first stripped without deforming the wires and for a length as indicated below:

| Section (sq.mm) | Stripping Tolerance ( $\pm$ mm) |
|-----------------|---------------------------------|
| 0.5-2.5         | 0.8                             |
| 4.0-6.0         | 1.2                             |
| 10-120          | 1.6                             |
| 150-630         | 3.2                             |

## Assembling

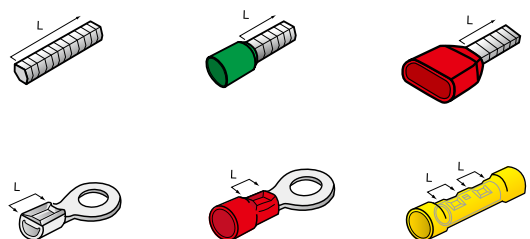
Fit into the connector the cable with a round section for the complete length of the stripped area. Verify that there are not wires out of the connector. If you need to use sectorals cables you must arrange a previous rounded crimping operation of the cable as follow:



A=L

## Using The Crimping Tool to Crimp The Terminals

Make the crimping operation shown as the drawing below:



L: Section to be crimped

## TOOLS

Due to the high quality of their components, to the ruggedness and simple working, they are particularly suggested for industrial uses. Dies are made of microcasted steel and handles of pressed steel with insulation of plastic material for soft and ergonomic handling. Possibility to adjust the crimping force through the central pin. Equipped with safety device and automatic unclamping to prevent the accidental opening of the dies before the complete execution of the crimping operation, so that uniformity of the connections is always guaranteed.

### TOOLS FOR CORD-END TERMINALS



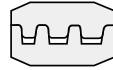
#### GIT-510

- For terminals with wire range: 0.25~2.5 mm<sup>2</sup> (24-14 AWG)
- Length: 165 mm (6.50 inch)
- Weight: 190 g (0.42 lbs)



#### GIT-516E1

- For terminals with wire range: 0.5~4 mm<sup>2</sup> (22-12 AWG)
- Length: 230 mm (9.06 inch)
- Weight: 600 g (1.32 lbs)



#### GIT-516E2

- For terminals with wire range: 6~16 mm<sup>2</sup> (10-6 AWG)
- Length: 230 mm (9.06 inch)
- Weight: 600 g (1.32 lbs)



#### GIT-516E3

- For terminals with wire range: 10~25 mm<sup>2</sup> (8-4 AWG)
- Length: 230 mm (9.06 inch)
- Weight: 600 g (1.32 lbs)



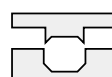
#### GIT-516E4

- For terminals with wire range: 25~50 mm<sup>2</sup> (4-1/0 AWG)
- Length: 240 mm (9.45 inch)
- Weight: 600 g (1.32 lbs)



#### GIT-518

- For terminals with wire range: 50~150 mm<sup>2</sup> (250/300 AWG)
- Length: 380 mm (14.96 inch)
- Weight: 3,180 g (7.01 lbs)



**TOOLS**

**TOOLS FOR TERMINALS**



**GIT-516T1**

- For insulated terminals and connectors
- Applicable range: 0.5~6 mm<sup>2</sup> (20-10 AWG)
  - 0.5~1.5 mm<sup>2</sup> (20-16 AWG)
  - 2.5 mm<sup>2</sup> (14 AWG)
  - 4~6 mm<sup>2</sup> (12-10 AWG)
- Length: 230 mm (9.06 inch)
- Weight: 600 g (1.32 lbs)



**GIT-516T2**

- For insulated terminals and connectors
- Applicable range: 10~16 mm<sup>2</sup> (8-6 AWG)
- Length: 230 mm (9.06 inch)
- Weight: 600 g (1.32 lbs)



**GIT-516T3**

- For non-insulated terminals
- Applicable range: 1.5~10 mm<sup>2</sup> (16-8 AWG)
- Length: 230 mm (9.06 inch)
- Weight: 600 g (1.32 lbs)



**GIT-516T4**

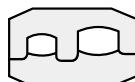
- For non-insulated terminals
- Applicable range: 2.5~16 mm<sup>2</sup> (14-6 AWG)
- Length: 230 mm (9.06 inch)
- Weight: 600 g (1.32 lbs)

**TOOLS FOR C SERIES CLOSED-END CRIMP CONNECTORS**



**GIT-517C1**

- Suitable wire range: 0.5~6 mm<sup>2</sup> (20-10 AWG)
- Length: 230 mm (9.06 inch)
- Weight: 600 g (1.32 lbs)



**GIT-517C5**

- Suitable wire range: 4~10 mm<sup>2</sup> (12-8 AWG)
- Length: 230 mm (9.06 inch)
- Weight: 600 g (1.32 lbs)



Hua Wei Industrial Co., Ltd. is a leading manufacturer of wire and cable management products in the world. Since 1976, Hua Wei has delivered excellence by consistently providing customers with extraordinary quality, first-class customer service, competitive pricing, and timely delivery. With rich experience and expertise, Hua Wei's global reach and presence is unmatched in the industry.

Headquartered in Taichung Taiwan, Hua Wei has expanded its manufacturing operations overseas in China and Thailand that are vertically integrated in design, manufacturing, processing, assembly, and packaging, thus expediting its response to changes in customer needs and market requirements. Moreover, all of Hua Wei manufacturing facilities are certified to ISO/TS16949, ISO9001, and ISO14001, complying with top-level quality systems and minimizing environmental impacts.

Hua Wei offers exceptional service combined with a large selection of products for a variety of applications in electrical, electronics, telecommunications, automotive, shipbuilding, rail, energy, construction, and retailing industries. In addition, to meet industry needs and market requirements, Hua Wei's products have gained UL, CE, CSA, ABS, DNV GL, BV and CQC accreditations and are all compliant with RoHS and REACH regulations.

Building its competitive advantage upon the core goals of innovation, continuous improvement and complete customer satisfaction, Hua Wei always spares no effort in advanced research and development to maintain its leading position and continually invests in its manufacturing operations to ensure customers receive the highest quality products and services.



## HUA WEI INDUSTRIAL CO., LTD.

### HEADQUARTERS

NO.1, GONGYEQU 26TH RD., NANTUN DIST.,  
TAICHUNG CITY, 40850, TAIWAN  
TEL: +886-4-23597777  
FAX: +886-4-23596705~6  
Email: [service@hwlok.com](mailto:service@hwlok.com)  
<http://www.hwlok.com>