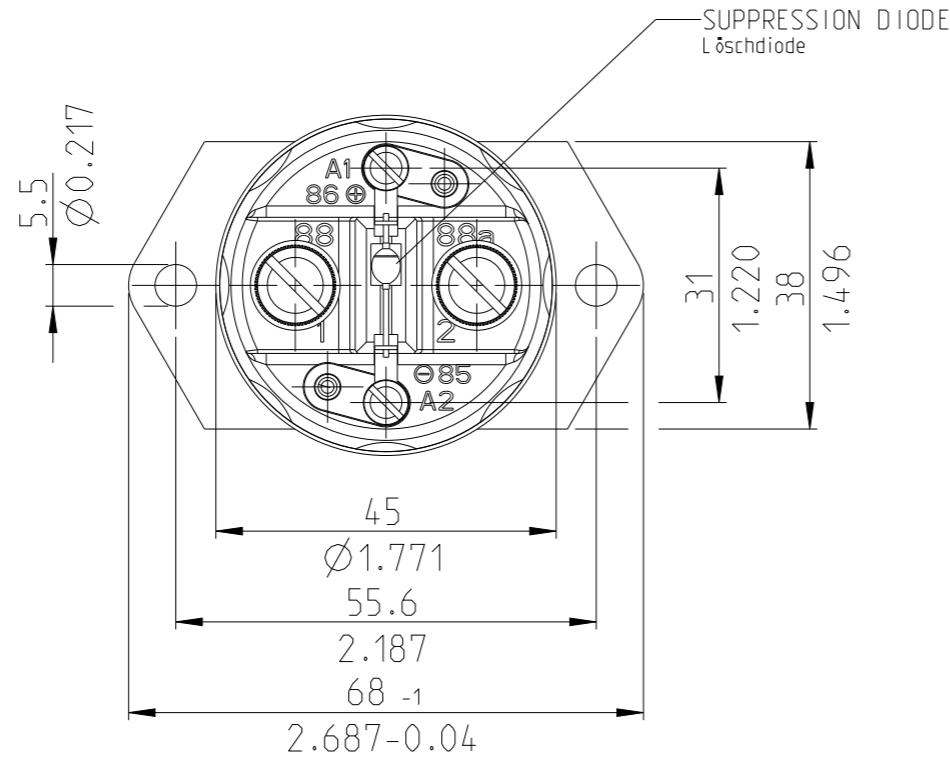


P	LTR	DESCRIPTION	DATE	DWN	APVD
A		TE STANDARD FORMAT UPDATED	20FEB2023	KS	RB

NOTE
Bemerkungen:

1 TE-CONNECTIVITY ORDER-NUMBER
TE-connectivity Bestellnummer

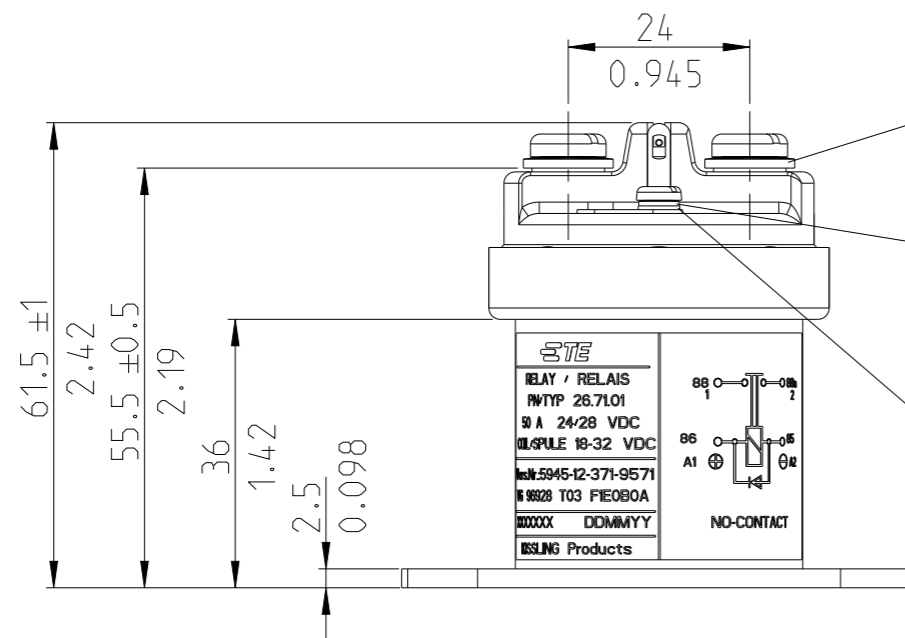


MAIN TERMINALS
Hauptkontakte
ISO 1580-M5x8
MAX. TORQUE 3.2-3.5Nm
Anzugsmoment 3.2-3.5Nm

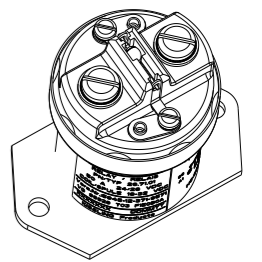
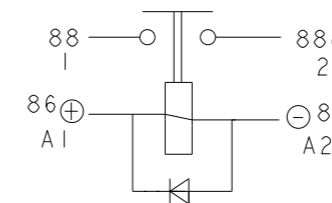
VG95387-7 A
LOCK WASHER
Sicherungsscheibe

COIL TERMINAL
Spulenanschluss
DIN 85 M3X6
MAX. TORQUE 0.5-0.6Nm
Anzugsmoment 0.5-0.6Nm

VG95387-7 B
LOCK Washer
Sicherungsscheibe



CIRCUIT
Schaltbild



ISO 1:2

K1008006	1	A	50AMP POWER RELAY (24/28VDC) 50AMP Leistungsrelais (24/28VDC)	1
TE ORDER-NO.	REV.		DESCRIPTION	ITEM NO

THIS DRAWING IS A CONTROLLED DOCUMENT.		DWN K.Seeger 21NOV2011
DIMENSIONS: mm/inch		CHK K.Seeger 21NOV2011
TOLERANCES UNLESS OTHERWISE SPECIFIED: DIN ISO 2768 cL		APVD H.Walz 12JUN2014
0 PLC ±		PRODUCT SPEC
1 PLC ±		
2 PLC ±0.03		
3 PLC ±0.010		APPLICATION SPEC
4 PLC ±		
ANGLES ±0°30'		
MATERIAL FINISH		WEIGHT
		CUSTOMER DRAWING

		TE Connectivity	
		NAME 50AMP POWER RELAY (24/28VDC) 50AMP Leistungsrelais (24/28VDC)	
SIZE A3	CAGE CODE 00779	DRAWING NO C=26-71-01	RESTRICTED TO -
SCALE 1:1		SHEET 1 OF 2	REV A

REVISIONS

P	LTR	DESCRIPTION	DATE	DWN	APVD
-		SEE SHEET 1	-	-	-

TECHNICAL DATA
MEETS THE REQUIREMENTS OF MIL-R-6106

ENVIRONMENTAL CHARACTERISTICS

TEMPERATURE RANGE.....-55°C TO +85°C (-67°F TO +185°F)
 MAX. ALTITUDE RATING.....50 000FT
 SEAL.....IEC PUBLICATION 529;IP 67;6 FT
 SHOCK G-LEVEL (ENERGIZED).....10 G/ 6 MSEC
 VIBRATION (ENERGIZED).....10 G/ 10-500 Hz
 ACCELERATION.....15 g

ELECTRICAL CHARACTERISTICS

MIN.INSULATION RESISTANCE:INITIAL.....100 MEGOhms
 AFTER LIFE OR ENVIRONMENTAL.....50 MEGOhms
 DIELECTRIC WITHSTANDING VOLTAGE SEA-LEVEL 1MINUTE.....1050 VOLTS
 ALTITUDE 1MINUTE.....500 VOLTS
 MAX.CONTACT DROP INITIAL.....0.15 VOLTS
 AFTER LIFE TEST.....0.175 VOLTS
 OVERLOAD.....400 AMP
 RUPTURE CURRENT.....500 AMP
 DUTY RATING.....50 AMP CONTINUOUS

RATED CONTACT LOAD (28 VDC)

RESISTIVE LOAD.....100000 CYCLES WITH 50 AMP
 INDUCTIVE LOAD.....20000 CYCLES WITH 12 AMP
 MOTOR LOAD.....100000 CYCLES WITH 50 AMP
 MECHANICAL LIFE.....200000 CYCLES WITH 12 AMP
 ENDURANCE.....1000000 CYCLES

OPERATING CHARACTERISTICS

COIL DATA

VOLTAGE RANGE.....18-32 VDC
 NOMINAL VOLTAGE.....28 VDC
 PICK UP VOLTAGE MAX.18 VDC FULL TEMP.RANGE
 COIL RESISTANCE.....110 Ohms ±10%
 COIL CURRENT MAX.....0.3 AMP
 DROP OUT VOLTAGE.....≤6 VDC FULL TEMP.RANGE

TIME MILLISECONDS-MAX.

OPERATE.....30
 RELEASE.....120
 BOUNCE.....8

WEIGHT.....0.34kg= 0.75 POUND MAX.

WIRE SECTION (AT NOMINAL LOAD).....MIN. 6mm²/ AWG 9

SUBJECT TO CHANGE

Technische Daten
Entspricht den Anforderungen nach MIL-R-6106

Allgemeine Daten

Umgebungstemperatur.....-55°C bis +85°C
 Max. Arbeitshöhe.....15000m
 Schutzart Innenraum.....IP67(0.2 bar;1min) nach IEC529
 Anschlusse.....IP00 nach IEC529
 Stoßbelastung.....10g, 6ms
 Schüttelbeanspruchung.....10g, 10-500Hz
 Beschleunigung15g
 Beständigkeit.....Beständig gegen gebrauchliche Öle, Kraftstoffe,
 Hydraulikfluessigkeiten, Alkohol und Feuerloeschmittel
 Gewicht.....340 g

Elektrische Daten

Min.isolationswiderstand.....100 MOhm
 Isolationswiderstand nach Belastung.....50 MOhm
 Hochspannungsfestigkeit.....1050 V fuer 1min
 Max. Kontaktspannungsabfall.....150 mV
 Kontaktspannungsabfall nach Lebensdauer.....175 mV
 Dauerstrom (Nennlast).....50A-
 Ueberlast (fuehren).....200A-fuer 1 s, 100A- fuer 20s

Lebensdauer

Nennlast (ohmsch)100000 Schaltspiele
 Mechanisch.....1000000 Schaltspiele

Spulendaten

Betriebsspannung.....18-32 V-
 Nennspannung.....24 V-
 Max. Anzugsspannung.....18 V- (ges. Temperaturbereich)
 Trennspannung.....<6 V- bei Tu 20°C
 Spulenwiderstand.....110 Ohm ±10%
 Spulenstrom.....ca. 0.25A bei Nennspannung und Tu 20°C


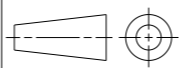
Schaltzeiten

Anzugszeit einschl. Prellzeit.....ca. 30 ms
 Abfallzeit.....ca. 120 ms
 Prellzeit.....ca. 8 ms

Sonstige Angaben

Anschlussquerschnitt bei Nennlast.....min.6 mm²
 Einbaulage.....beliebig

Aenderungen vorbehalten

THIS DRAWING IS A CONTROLLED DOCUMENT.		DWN K.Seeger	21NOV2001	 TE Connectivity	
DIMENSIONS: mm/inch		CHK K.Seeger	21NOV2001		
TOLERANCES UNLESS OTHERWISE SPECIFIED: DIN ISO 2768 cL		APVD H.Walz	12JUN2014	NAME 50AMP POWER RELAY (24/28VDC) 50AMP Leistungsrelais (24/28VDC)	
		PRODUCT SPEC		RESTRICTED TO	
MATERIAL		APPLICATION SPEC		SIZE A3	CAGE CODE 00779
FINISH		WEIGHT		DRAWING NO G=26-71-01	SCALE 1:1
		CUSTOMER DRAWING		SHEET 2 OF 2	REV A