



**AMAZING DORTMUND.**

# ONE CITY. GREAT OPPORTUNITIES.

3RD REVISED EDITION 2017





**AMAZING DORTMUND.**

ONE CITY.  
GREAT OPPORTUNITIES.

# CONTENTS

FOREWORD \_\_\_\_\_ 7

## TOURISM / LEISURE



ONE CITY. MANY AIMS. \_\_\_\_\_ 9

JEWELS IN THE CROWN OF INDUSTRIAL CULTURE: ZECHÉ ZOLLERN AND THE HANSA COKING\_ 12

THE DORTMUND U TOWER: CENTRE FOR ART, EDUCATION AND CREATIVITY \_\_\_\_\_ 14

MAGICAL MOMENTS IN THE DEUTSCHES FUSSBALL MUSEUM \_\_\_\_\_ 16

## HOUSING & ECOLOGY



ONE CITY. LOTS OF ECOLOGY. \_\_\_\_\_ 19

PHOENIX WEST: BUILDING CULTURE AS A LOCATION FACTOR \_\_\_\_\_ 22

NATURE AT ITS BEST \_\_\_\_\_ 24

GLOBAL EXEMPLAR - PHOENIX SEE \_\_\_\_\_ 26

## INTER- CULTURAL DIVERSITY



ONE CITY. MANY NATIONALITIES. \_\_\_\_\_ 29

DIVERSITY AND TOLERANCE - CHRISTOPHER STREET DAY \_\_\_\_\_ 32

TWIN TOWNS \_\_\_\_\_ 34

SOLIDARITY IN OUR CIVIL SOCIETY \_\_\_\_\_ 40

RESEARCH/  
TEACHING

## ONE CITY. LOTS OF KNOWLEDGE. \_\_\_\_\_ 43

TU DORTMUND: GEL WITH A FUTURE \_\_\_\_\_ 46

FH DORTMUND: THE BEARABLE LIGHTNESS OF CYCLING \_\_\_\_\_ 48

FIRST DORTMUND WHISKY \_\_\_\_\_ 50

GIVAUDAN \_\_\_\_\_ 51

## SPORT



## ONE CITY. LOTS OF SPORT. \_\_\_\_\_ 53

DORTMUND - PARA-BADMINTON POWERHOUSE \_\_\_\_\_ 56

BORUSSIA DORTMUND - ATTENDANCE RECORD \_\_\_\_\_ 58

## TECHNOLOGY



## ONE CITY. LOTS OF TECHNOLOGY. \_\_\_\_\_ 61

ELMOS. STRONG PERSONALITIES. STRONG PRODUCTS. \_\_\_\_\_ 64

"HOW DO WE WANT TO GET AROUND DORTMUND IN THE FUTURE?" \_\_\_\_\_ 66

# CONTENTS

## BUSINESS / SKILLED TRADES / LOGISTICS

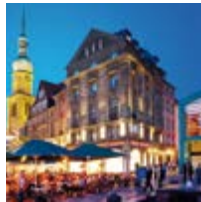


### ONE CITY. LOTS OF BUSINESS. \_\_\_\_\_ 69

WILO SE \_\_\_\_\_ 72

AWARD-WINNING ENERGY CAMPAIGN \_\_\_\_\_ 74

## URBAN CENTRE



### ONE CITY. HIGH QUALITY OF LIFE. \_\_\_\_\_ 77

RETRO-TECHNOLOGY IN THE BINARIUM \_\_\_\_\_ 79

MM GROUP SALES & MARKETING \_\_\_\_\_ 80

OLD HARBOUR OFFICE: COG SAILS ACROSS MOSAIC FLOOR \_\_\_\_\_ 81

DORTMUND DICTIONARY \_\_\_\_\_ 82

## CULTURE



### ONE CITY. LOTS OF CULTURE. \_\_\_\_\_ 83

THEATER DORTMUND \_\_\_\_\_ 86

WISHGRANTER & FAIRWANDLER \_\_\_\_\_ 88

THE CULTURAL HERITAGE OF OUR CITY \_\_\_\_\_ 90

SOCIAL MEDIA WALK - MUSEUM MILE \_\_\_\_\_ 92

WE ARE A FESTIVAL CITY \_\_\_\_\_ 94

PUBLISHING DETAILS \_\_\_\_\_ 98



# FOREWORD



Dear Citizens of Dortmund  
and Visitors to our City,

Dortmund used to be one of the largest industrial cities in Germany. Today we are one of the most innovative metropolises in Europe. Coal, steel and beer are a proud part of our history and are still a part of our present. But science, innovative technology and services are our future. Former US Ambassador John B. Emerson praised us as "Silicon Dortmund".

Yes, Dortmund is flying high again; and not just because of the "Flying Pictures" displayed at the top of the Dortmunder U-Tower. Inside the Dortmunder U, you can also see exhibitions of national and international importance. World stars and promising new artists attract eager audiences to the Konzerthaus and Theatre. At the German Football Museum football enthusiasts' eyes light up at the sight of so many unique memories of German football history.

More and more people believe in the strengths of our city: Dortmund is growing! Since 2016, for the first time in 20 years, more than 600,000 people are living in the city again. Above all it is young families that like to settle down here. They enjoy the excellent opportunities for recreation, the affordable housing and good, promising jobs. Today, Dortmund is a real City of Science providing the best possible conditions for around 52,000 students, researchers and teaching staff at seven universities and 19 research institutes.

Dortmund is a strong, attractive location for businesses too: traditional companies expand here, global players invest here, and start-ups bring their new ideas into the city.

PHOENIX, one of the most innovative residential, working and technology locations in Germany, is developing and growing. The project is already a recognized model for successfully transforming a traditional steel and coal city into a modern metropolis.

We are definitely on the right track. All the awards we have won confirm that as well: these include "City of Progress", "Most Innovative City in Europe", "Most Sustainable City in Germany", Capital of Mobility and Capital of Fair Trade.

The stories in this book and on the website at [dortmundueberrascht dich.de](http://dortmundueberrascht dich.de) are a great way to (re-)discover Dortmund. And if you don't know Dortmund yet, come and find out for yourself about the wide range of potential our city has to offer and get to know our greatest strength: the people, who, in spite of our typical Westphalian stubbornness, are very friendly and welcoming hosts.

All the best

A handwritten signature in blue ink that reads "Ullrich Sierau". The signature is fluid and cursive, written in a professional style.

Ullrich Sierau

Lord Mayor of the City of Dortmund



Dortmund is “Heimat” in the best sense of the word: The city, a Hidden Champion in the German economic landscape, is full of traditions, but it is also innovative, young and dynamic, open and diverse. It’s fun living and working in Dortmund.

DR. KARL-PETER ELLERBROCK  
DIRECTOR OF THE  
WESTPHALIAN BUSINESS ARCHIVE FOUNDATION



Bands think it’s really cool to be on stage in Westfalenhalle 1.

JOCHEN MESCHKE  
CEO EVENTS CENTRE WESTFALENHALLEN



Dortmund is a fascinating city and, as a businessman and president of the chamber of industry and commerce, I am keen to champion it. Business life is flourishing here and the quality of life is high. But the best thing about the city is the people who live here – they’re open and sincere, have lots of energy and you always know where you are with them.”



HEINZ-HERIBERT DUSTMANN  
PRESIDENT OF THE CHAMBER OF INDUSTRY AND COMMERCE (IHK)





ONE CITY.  
MANY AIMS.

# ONE CITY.

DORTMUND IS THE LARGEST CITY IN ONE OF THE MOST DENSELY POPULATED REGIONS IN THE WORLD. THE CITY AND HAS INCREASED ITS POPULATION BY 20,000 IN THE LAST FIVE YEARS TO OVER

600,000. | THE NATION'S FAVOURITE SPORT HAS GOT A NEW HOME AT THE GERMAN FOOTBALL

MUSEUM OPPOSITE DORTMUND'S MAIN STATION. | WITH ALMOST 25,000 PLACES THE BVB SOUTH

STAND IN THE SIGNAL IDUNA PARK HAS BY FAR THE MOST STANDING ROOM IN EUROPE. | THE STO-

RAGE WAREHOUSE OF THE FORMER UNION BREWERY ATTRACTS INTERNATIONAL ATTENTION AS THE

DORTMUND U TOWER AND NEW CENTRE FOR ART AND CREATIVITY. | THE LEGENDARY, HERITAGE-

PROTECTED WESTFALENHALLE 1 IS ONE OF THE MOST TRADITIONAL SPORT AND EVENTS ARENAS

IN GERMANY. | AT 45 METRES HIGH, THE WORLD'S TALLEST CHRISTMAS TREE AT THE DORTMUND

CHRISTMAS MARKET IS MADE UP OF 1,700 RED SPRUCE TREES AND 48,000 LIGHTS. | THE INTER-

MODELLBAU IN THE WESTFALENHALLEN IS THE WORLD'S LARGEST FAIR FOR MODEL BUILDING AND

MODEL SPORT **THE HANSA COKING PLANT (1928-1992) IS A GIANT WALK THROUGH SCULPTURE**

**OFFERING FASCINATING INSIGHTS INTO THE HISTORY OF HEAVY INDUSTRY. | THE LWL-COLLIERY**

**MUSEUM ZECHÉ ZOLLERN IS A MONUMENT OF WORLD STANDING, ITS MACHINE HALL WAS THE FIRST**

**OFFICIAL INDUSTRIAL HERITAGE SITE IN THE REPUBLIC. | THE PHOENIX LAKE'S WATER SURFACE**

**COVERS 24 HECTARES AND IS BIGGER THAN HAMBURG'S BINNEN-ALSTER. | DORTMUND'S MOST**

**POPULAR PLACES FOR EXCURSIONS, IN ADDITION TO THE GREEN OASES AT THE WESTFALENPARK,**

**ROMBERGPARK, REVIERPARK WISCHLINGEN AND FREDENBAUMPARK, INCLUDE PALACES, CASTLES**

**AND COUNTRY MANSIONS. | THE LATE ROMANESQUE CHURCH REINOLDIKIRCHE FORMS THE AR-**

**CHITECTURAL AND GEOGRAPHIC CENTRE OF THE CITY.**







Anyone who enters the building through the Jugendstil entrance today can hardly believe that three years after the Zeche Zollern mine finally closed (1966) the Gelsenberg AG company put the demolition of the machine hall and all its equipment out to tender. Expected scrap value was 215,000 Deutschmarks. It was saved in 1969. This campaign led to the foundation of the industrial museums in Westphalia in 1979 and in the Rhineland in 1984.

# JEWEL IN THE CROWN OF INDUSTRIAL CULTURE

## ZECHÉ ZOLLERN MACHINE HALL IN ALL ITS GLORY

The Machine Hall at Zeche Zollern, a former coalmine in Dortmund, has set several benchmarks throughout its history: as an outstanding example of modern industrial architecture, as a building for innovative technology, then later as the pioneering work by the Preservation of Industrial Monuments Foundation in Germany, and as the trademark of the Westphalian Industrial Museum. This monument with its famous Jugendstil entrance portal has recently undergone extensive refurbishments and can now be enjoyed in all its glory once again. This is an industrial heritage site, the like of which is not to be found anywhere else in Europe.

In 1902/1903 the Gelsenkirchener Bergwerks AG mining company had the hall constructed as the technical heart of their new pit. The architecture is reminiscent of a church transept, the huge mar-

ble control board is like an altar and the coloured glazing has more than a passing resemblance to the stained-glass windows in a church. And that is exactly why the hall was built like this; it was the very first mine where all the machinery was run on electricity. Zollern was a cathedral of electricity, and this beauty made of steel and glass was designed to show it off.

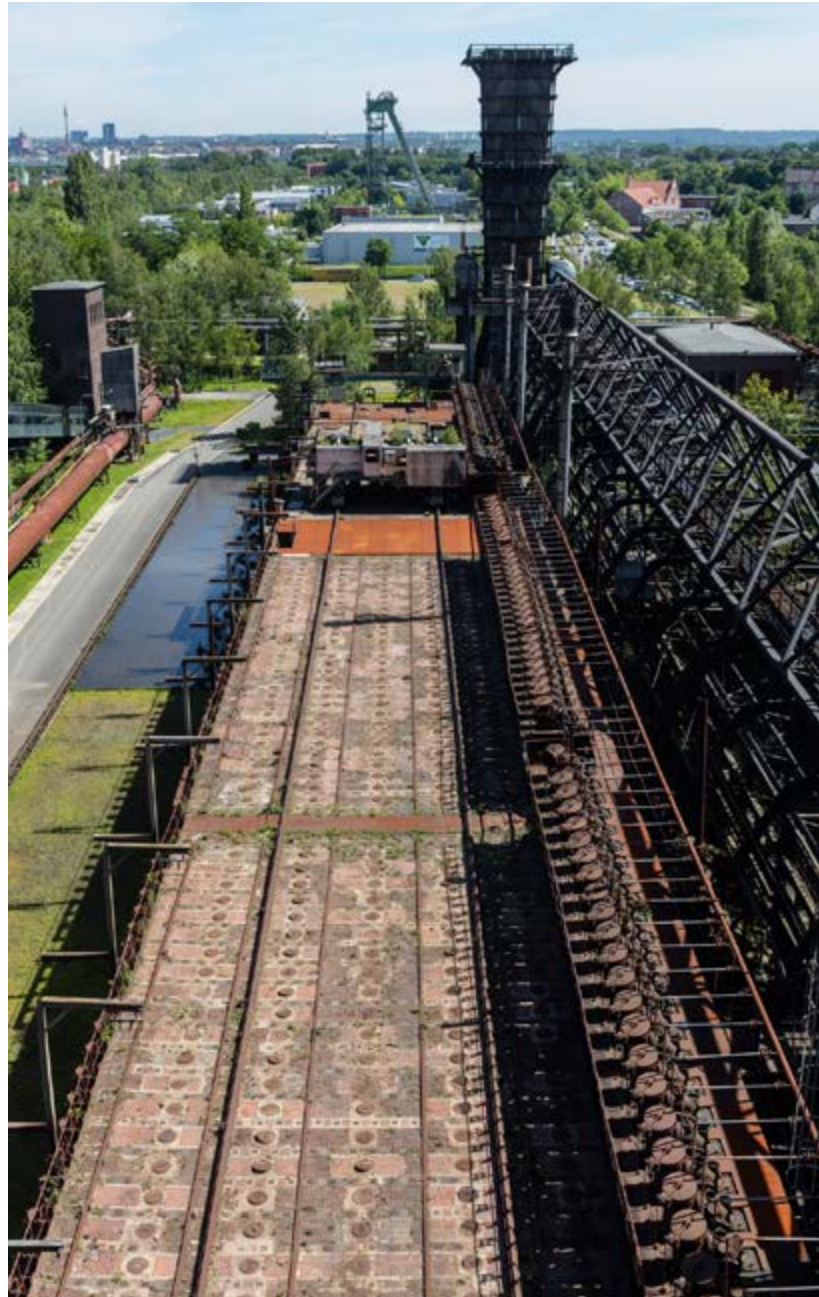
Almost 100 years after it first went into operation, this architectural gem had fallen on hard times: the simple steel and glass windows and the crossbars and joints of the steel framework had suffered the most damage, although the bricks and pointing were also disintegrating in many places. The refurbishment work was not intended to restore it to as new condition, but still show traces of its many years of productive use.

# SIMPLY GREAT

## INDUSTRIAL HERITAGE SITE SETS NEW VISITOR RECORD

Just look at that: former coking plant Kokerei Hansa, with the Bergwerk climbing hall and Mooskamp Station, set a new record in 2016 with a total of 188,000 visitors between them. The enthusiasm for this heritage-protected industrial site didn't just appeal to visitors from nearby and from the Ruhr Region, but attracted people from the Netherlands, Switzerland and Austria, too. The Kokerei Hansa, a great attraction on the "Route of Industrial Culture", with 48,300 visitors even delighted twice as many people as in the year before. Ursula Mehrfeld, Managing Director of the Stiftung Industriedenkmalpflege, puts the positive visitor numbers down to the attractive variety of events including the Emscherkunst art exhibition, Extraschicht, the Street Food Festival, the Day of the Open Monument, the Montan Flea Market, and a whole range of concerts at the "Hansa Revier Huckarde". There is still a lot of interest in the industrial history tours and in the night walks around the site – bring your own torch! A survey of the visitors showed that the compressors, the coking furnace and the authenticity of the plant came out tops on the popularity scale as well.

The Kokerei Hansa coking plant is a large scale walk through sculpture offering fascinating insights into the history of the heavy industry of the last century. This major coking plant started up in 1928 and was an important part of Dortmund's steel and coal industry.





**DORTMUNDER U**  
ZENTRUM FÜR KUNST  
UND KREATIVITÄT

# CENTRE FOR ART, EDUCATION AND CREATIVITY

DORTMUNDER U TOWER IS EUROPEAN  
CULTURAL BRAND OF THE YEAR 2016





Edwin Jacobs from the Netherlands has been the new boss in the Dortmunder U Tower since January 2017, where he is also responsible for the Museum Ostwall. The Dortmunder U was opened in the year 2010 as a key project for the European Capital of Culture RUHR.2010.

“The Dortmunder U Tower is European Cultural Brand of the year 2016”. This centre stands “for an innovative form of brand communication” was the verdict of the jury, which is made up of 34 people from the worlds of culture, politics, business and media. Before winning this Cultural Brand Award, the U had already won the “German Brand Award” in 2016 for its excellent brand management. The U has been up and running for around six years now and it is clear that it has had a positive impact on the city. The U enjoys particularly high levels of acceptance among the younger generation and it is also one of the most recent centres of its kind in Germany.

2017 will be a year of change and repositioning for the centre with all its facilities. “Participation” – this is the key word Edwin Jacobs, new director of the U, has selected as the motto to define the objectives of the work they do here.

Of course, there is a lot of participation already, especially in the UZWEI. Starting out from existing activities and formats, such as at the “Interface” project between the Museum Ostwall and the UWZEI, the “Innovative Citizen” or the young media festival “Feedback”, the spirit of participation will grow to involve everyone in the building. “It makes a real difference to the visitors to the U whether they see people working actively and trying out new things, or whether they just see people observing art”, says Jacobs. In future this “new openness” will start the moment you come in through the reception area. The U wants to use its collections and activities to broaden its base, attract new visitor groups and involve existing visitors even more. In future, they are going to put the interactive possibilities of the digital world to good use to improve the visitor experience. They aim to build up a strong “CommUnity” which is loyal to the U for the long term and wants to be involved in shaping its future.



MAGICAL MOMENTS AT THE  
DEUTSCHES FUSSBALLMUSEUM  
INNOVATIVE CONCEPT FASCINATES VISITORS





The German Football Museum aims to showcase the fascinating phenomenon of football in an exciting and moving way. The museum turns football history into an emotionally charged experience and celebrates the joy of football. The main concept and motto of the museum reflect its goal to be a central place for German football memories: We are football.

and inspires the visitors. From the legendary report on the Wonder of Bern to the latest Wembley exhibition, our fascination with football is showcased in a completely new way here."

Dortmund's Lord Mayor Ullrich Sierau: "I am particularly pleased that it is attracting people from well beyond the borders of our region, with around a third of the museum visitors coming to Dortmund from elsewhere. So, the museum is also a focal point for tourism."

In addition to the permanent exhibition and regular special exhibitions, the museum also offers educational activities and programmes and there are three places to enjoy food and drink. It also hosts "ANSTOSS", a cultural and events programme with readings, film evenings and panel discussions.

Right from the kick-off, the new German football experience has been one of the top attractions in the region, counting more than 200,000 visitors in its very first year. The German Football Museum enjoys high visitor satisfaction levels as well. The figures so far: 90 percent of the museum visitors rated the multimedia and interactive permanent exhibition as "good" or higher. Every third visitor comes to the museum on the basis of a recommendation by visitors who have been here before. 80 percent think that it is good value for money. The average length of time spent in the exhibition is three hours, and 71 percent of the visitors say they will be coming again. The German Football Museum is a multimedia exhibition, but it is also a versatile venue for events. DFB-President Reinhard Grindel: "The surveys show that the innovative exhibition concept really moves

[www.fussballmuseum.de](http://www.fussballmuseum.de)



The most significant trophies in football are on display in the Treasure Chamber: The Jules Rimet Trophy, the FIFA-World Cup Trophy and the Henri-Delaunay Cup.

My home town never stops fascinating me. It successfully faces up to the challenges of the future with lots of motivation, vision and courage. Being able to help a bit is very satisfying and ” makes me quite proud as well.



UWE SAMULEWICZ  
CHAIRMAN OF THE EXECUTIVE BOARD SPARKASSE DORTMUND



Should we wake them or let them slumber? That's what I ask myself whenever I think about the places I particularly like. They are often places where time seems to run more slowly. Sometimes it even stands still. And there are places like that here too. If you look carefully you'll find some real architectural treasures in Dortmund, just waiting to be woken. ”

RICHARD SCHMALÖER  
SPEAKER OF THE BOARD OF THE FEDERAL GERMAN ARCHITECTS BDA HAMM UNNA REGION  
AND PUBLISHER OF THE ONLINE ARCHITECTURE GUIDE "30 ARCHITECTURAL TREASURES IN  
DORTMUND"



ONE CITY.  
LOTS OF ECOLOGY.

# ONE CITY.

OPEN SPACES MAKE UP 70,7 PERCENT OF DORTMUND, MAKING IT ONE OF THE GREENEST CITIES IN EUROPE AND, AFTER HAMBURG, THE GREENEST CITY IN GERMANY | THERE ARE 150,000 TREES ALONG DORTMUND'S STREETS, IN PARKS AND OTHER OPEN SPACES. | WITH ITS 2,800 VARIETIES, THE GERMAN ROSARIUM IN THE WESTFALENPARK IS ONE OF THE LARGEST ROSE COLLECTIONS IN THE WORLD. | THE 26 CONSERVATION AREAS IN DORTMUND WITH 1,690 HECTARES MAKE UP SIX PERCENT OF THE SURFACE AREA. | IN OCTOBER 2011 AND NOVEMBER 2014 DORTMUND RECEIVED THE EUROPEAN ENERGY AWARD (EEA) FOR EXCELLENT ENERGY SAVING, ITS EFFORTS FOR CLIMATE PROTECTION AND EXEMPLARY PROJECTS. | THE NORTHERN CITY QUARTER IS PROUD TO HAVE THE LARGEST COMPLETE AREA OF OLD BUILDINGS IN THE RUHR REGION.

THE CITY OF DORTMUND IS

A MEMBER OF THE CLIMATE ALLIANCE AND HAS CLOSE MUNICIPAL, NATIONAL AND INTERNATIONAL

PARTNERSHIPS WITH 1,700 MUNICIPALITIES FROM 24 EUROPEAN COUNTRIES.

THE EUROPEAN ASSOCIATION FOR RENEWABLE ENERGIES (EUROSOLAR) AWARDED DORTMUND THE "SOLARPRIZE" FOR ITS "100 ENERGY PLUS HOUSES". | WITH ITS MASTERPLAN ENERGY TRANSITION AND ITS 214 MEASURES, THE CITY OF DORTMUND IS FACING UP TO THE CHALLENGES OF ENERGY TRANSITION WITH A HIGH LEVEL OF POLITICAL RESPONSIBILITY. | DORTMUND BECAME THE FIRST OFFICIAL FAIR TRADE TOWN IN THE RUHR REGION WHEN IT JOINED THE FAIRTRADE TOWNS CAMPAIGN IN 2009, A SCHEME THAT NOW INCLUDES SOME 2,000 COMMUNITIES IN 25 COUNTRIES, INCLUDING LONDON, ROME, BRUSSELS AND SAN FRANCISCO | THE FEDERAL ENVIRONMENT MINISTRY DISTINGUISHED DORTMUND IN 2016 FOR TWO CO<sub>2</sub> EMISSION-REDUCTION PROJECTS - INCLUDING THE LARGEST GERMAN SYSTEM FOR ADVANCED COMPANION LIGHTS AT THE PHOENIXSEE.







# “BUILDING CULTURE” AS A LOCATION FACTOR

## REDEVELOPING PHOENIX WEST WITH CARE

For many years, the Hartware MedienKunstVerein (HMKV) used the spare parts warehouse built in 1895 as a creative factory. The photo shows part of the “History will repeat itself” exhibition from the year 2007.

Can “Building culture” be a location factor for investments and an indication for a strong economic location? What may seem strange to the layman, is every day business for urban planners. In March 2016 in Dortmund, Thomas Vielhaber, planning officer for the town of Arnsberg, presented the Arnsberger Model for “Building Culture” which is a great guide for other municipalities. Vielhaber defined building culture as the “non-material wealth of a city which makes it attractive and worth living in. “This is how identity is formed; and people like to identify with their home towns”.

Of course, people are fascinated by imposing monuments and want to work and live in attractive neighbourhoods, spend their free time and feel good there. PHOENIX West supports

this thesis perfectly. “The misunderstood twin” is how Kurt Eichler, Managing Director of the Kulturbetriebe in Dortmund, titled his contribution to the book “PHOENIX – an urban landscape in Dortmund”. PHOENIX West, with its historic buildings, is seen as temporary cultural space: After the site was cleared and then reopened after the closure of the blast furnace, in addition to the well-known striking landmarks, some other buildings were left standing as well. These included the former spare parts warehouse, and the much larger switchgear building where the steelwork’s electrical plant used to be. The IBA Emscherpark initiated the cultural re-definition of these former industrial complexes in the northern Ruhr Region and thus also for PHOENIX West. IBA Emscherpark was a 10-year future-oriented programme run by the

state of NRW, which began on 21 April 1989 and ended in 1999. It aimed to help master the structural crisis and to give the region a boost of self-confidence.

Culturally, PHOENIX West became accessible through the Theaterfestival Ruhr "T7", the artistic "Phoenix Works" campaign by the Dortmund University of Applied Science, the Ruhrtriennale, Extraschicht events, the Nights of Industrial Culture, the Dortmund Theatre Nights and artskenico performances such as "hanging around" and "Heimat surreal". The spare parts warehouse built in 1895 became home to the Hartware MedienKunstVerein (HMKV), and just one year later this new cultural location had become so well known that the Kunststiftung NRW presented the Nam June Paik Award, the most prestigious and financially rewarding prize for media art, in the PHOENIX Halle, as it is now called. Until 2010, when HMKV moved to the new Dortmunder U, there were many media art exhibitions in PHOENIX Halle 15, which also gained it international recognition.

With a new extension and additional infrastructure, a new music and events venue for up to 3,600 visitors is now being created in the hall. For Kurt Eichler this is "a signal for more artistic and cultural prospects for the former blast furnace site," as future uses for the old switch gear building are still being kept open.

Wherever Dortmund has undertaken large scale conversion projects over the last couple of decades, it has not just been about extending space, but about changing spaces", explains planning officer Ludger Wilde. In this way Dortmund becomes more attractive as a city, also by attracting people from outside. So Dortmund, as Lord Mayor Ullrich Sierau expressed it, "gets a new story". But, in spite of that, changing PHOENIX West into a sustainable future technology location in a newly designed park landscape is being carried out very carefully. The mix is important: moderate demolition, sensitive preservation of heritage-protected relics of the industrial era combined with new uses and new infrastructure. Project management for PHOENIX West is in the hands of NRW.URBAN, strategic operator for the state of NRW.



At PHOENIX, Dortmund is counting on reusing and integrating industrial relics which have been withdrawn from their urban context until now.







# NATURE AT ITS BEST

## A GREEN BELT BESIDE THE HENGSTHEY LAKE

Would you have thought it? Would you have known? And in Dortmund as well! Oskar Neubauer's aerial photo shows the stretch of green belt below the village of Hohensyburg. In the top left-hand corner of the photo a serpentine road can be seen winding up the steep bank. The view is just as spectacular live as in the photo: so if you plan to go there, you should allow plenty of time. There is lots to see and discover. Close to the casino stand the ruins of the mediaeval castle of Syburg. Above the ruins a statue of Emperor Kaiser Wilhelm I. looks out across the Hengstey Lake where the River Lenne meets the Ruhr. After taking in these historical places it's worth making a short trip to the nearby church of St. Peter of Syburg. Founded in 776, this Romanesque church is said to be one of the oldest in Westphalia. In addition to its fortified tower and a 1,000-year-old font it boasts three tomb slabs from the age of the Carolingians and Merovingians.





# GLOBAL EXEMPLAR OF SUSTAINABLE URBAN DEVELOPMENT

## ICLEI-STUDY ABOUT THE PHOENIX SEE

There could hardly be higher praise: Dortmund has succeeded in turning itself from an industrial city into a green metropolis, that's what the ICLEI international cities network (Local Governments for Sustainability) stated in their study of the PHOENIX See. So, the city of Dortmund is now setting an example to the world for sustainable urban development.

The institute for sustainable urban planning that was set up by the United Nations in New York, took a close look at how PHOENIX has developed from

being one of the largest steelworks in Europe to its present day use as a recreation and residential area with neighbouring technology park and the renaturalized Emscher river.

Building the new lake has improved the quality of life and housing in Dortmund. ICLEI also made a special mention of the changes to the Emscher system – a herculean task both financially and technically. Dortmund has also paid an important contribution to waste water management in the Ruhr Region with this project, the flora and fauna is





Setting up the Sparkassenakademie in the medieval Hörder Burg (including hotel) sees an important NRW institution moving to the PHOENIX See.

Constructing the PHOENIX See “has given an important impetus to reducing climate change”, says the ICLEI cities network.



now flourishing again due to the renaturation of the river and the construction of the lake at PHOENIX.

Converting this old site, where steel had been produced since the 1870s, has been one of the most ambitious urban construction projects in Germany. At times the area was the biggest building site in Europe. The construction of the lake, which is larger than Hamburg's Binnenalster, began in 2006 and took five years. It was a huge engineering feat and a great achievement for water management as well; when necessary, high water levels from the Emscher can be redirected from East to West and the best ever water quality is guaranteed by

means of a technically sophisticated system of filter equipment, ground materials, plants and inflows and outflows.

Today the lake is an important recreation area in the city. 2,000 new homes are being created on the banks of the lake with great views. Sales to private people and investors have exceeded all expectations. The north side, with its single homes and apartment buildings is now completely finished, the harbour area boasts some splendid urban architecture, and the south side is for a range of different buildings and uses. The old industrial city of Dortmund has learnt its lesson, praises the ICLEI.



I live in the north of Dortmund. I know my neighbours here, we stand outside the kiosk together, shout out the football results from the window and sit together drinking one of the local beers at the Nordmarkt, where we really and honestly overcome the barriers of origin and religion. I feel good here and I like living here.”

SASCHA BISLEY, AUTHOR



I come from the Allgäu but “Sportmund” has been my real home for more than 25 years. This city has approached structural change with great enthusiasm, making it a shining example of successful urban change with integrative, social elements, combined with culture and sport of the highest quality.

HANS-PETER DURST, GERMAN CYCLIST,  
MULTIPLE WORLD CHAMPION AND  
PARALYMPIC MEDAL WINNER







ONE CITY.  
MANY NATIONALITIES.

# ONE CITY

EVER SINCE THE TIMES OF INDUSTRIALISATION, DORTMUND HAS BEEN A CITY OF MIGRATION. TODAY

MORE THAN 200,000 INHABITANTS HAVE A MIGRATION BACKGROUND. | ABOUT 120 MIGRANT OR-

GANISATIONS ARE ENGAGED IN SUPPORTING PEOPLE WITH A MIGRATION BACKGROUND SO THEY CAN

PARTICIPATE IN SOCIAL, POLITICAL AND ECONOMIC LIFE HERE. | PEOPLE FROM DIFFERENT CULTU-

RES CAN MEET EACH OTHER IN DORTMUND'S "HOUSE OF DIVERSITY" | PEOPLE FROM 172 DIFFE-

RENT NATIONS FEEL AT HOME IN DORTMUND | IN 2013 DORTMUND RECEIVED THE INTEGRATION

PRIZE "MANY CULTURES - ONE PASSION" FROM THE GERMAN FOOTBALL ASSOCIATION AND DAIMLER

BENZ AG | **IN 2008 DORTMUND SIGNED UP TO THE CHARTER OF DIVERSITY.** DORTMUND HAS

OFFICIAL PARTNERSHIPS WITH OTHER TOWNS THROUGHOUT THE WORLD: AMIENS (FRANCE), LEEDS

(ENGLAND), BUFFALO (USA), NETANYA (ISRAEL), NOVI SAD (SERBIA), ROSTOW AM DON (RUSSIA),

XI'AN (CHINA), TRABZON (TURKEY) AND ZWICKAU. | IN NOVEMBER 2014, THE CITY OF DORTMUND

WAS DISTINGUISHED FOR ITS ACTIVITIES AS A "EUROPEAN ACTIVE MUNICIPALITY IN NRW". | DORT-

BUNT, THE INTERNATIONAL WEEK AND THE MÜNSTERSTRASSE FESTIVAL SHOW JUST HOW COLOURFUL

AND DIVERSE DORTMUND IS. | THE "NURSERIES IN DORTMUND'S NORTHERN DISTRICTS" INTEG-

RATION PROJECT WAS HONOURED WITH THE "SOCIAL CITY 2016" PRIZE AS AN EXCELLENT EXAMPLE

WITHIN GERMANY. | AT THE INTERNATIONAL WOMEN'S FILM FESTIVAL DORTMUND|COLOGNE, WO-

MEN DIRECTORS FROM ALL OVER THE WORLD PRESENT WELL OVER 100 FILMS.

AND DIVERSE DORTMUND IS. | THE "NURSERIES IN DORTMUND'S NORTHERN DISTRICTS" INTEG-

RATION PROJECT WAS HONOURED WITH THE "SOCIAL CITY 2016" PRIZE AS AN EXCELLENT EXAMPLE

WITHIN GERMANY. | AT THE INTERNATIONAL WOMEN'S FILM FESTIVAL DORTMUND|COLOGNE, WO-

MEN DIRECTORS FROM ALL OVER THE WORLD PRESENT WELL OVER 100 FILMS.

AND DIVERSE DORTMUND IS. | THE "NURSERIES IN DORTMUND'S NORTHERN DISTRICTS" INTEG-

RATION PROJECT WAS HONOURED WITH THE "SOCIAL CITY 2016" PRIZE AS AN EXCELLENT EXAMPLE



offen

für alles







# DIVERSITY AND TOLERANCE.

## 21ST DORTMUND CHRISTOPHER STREET DAY (CSD) – QUEER IN THE REVIER

“On the occasion of the 21st Dortmund CSD, we are taking to the streets together in Dortmund for diversity and tolerance and against racism, homophobia, transphobia, hatred and violence.” The Dortmund CSD is the oldest in the Ruhr Region and certainly one of the oldest in Westphalia. The organiser of the event, SLADO e.V., is the umbrella organisation for gay, lesbian, bisexual and transgender societies and initiatives in Dortmund and works closely with the municipal Coordination Office for lesbian, gay and transgender people.

The City has been supporting the CSD financially for five years now. Lord Mayor Ullrich Sierau is opening the CSD once again in 2017.

The heart of CSD Dortmund is not only the varied stage programme, it is also the street festival right in the middle of Dortmund’s city centre. The organisers urge people to get involved: “Let’s demonstrate for the freedom to shape our own lives; for a freedom which doesn’t limit anyone else’s lives. For the right to live our lives how we want to. If we want to shape our future society





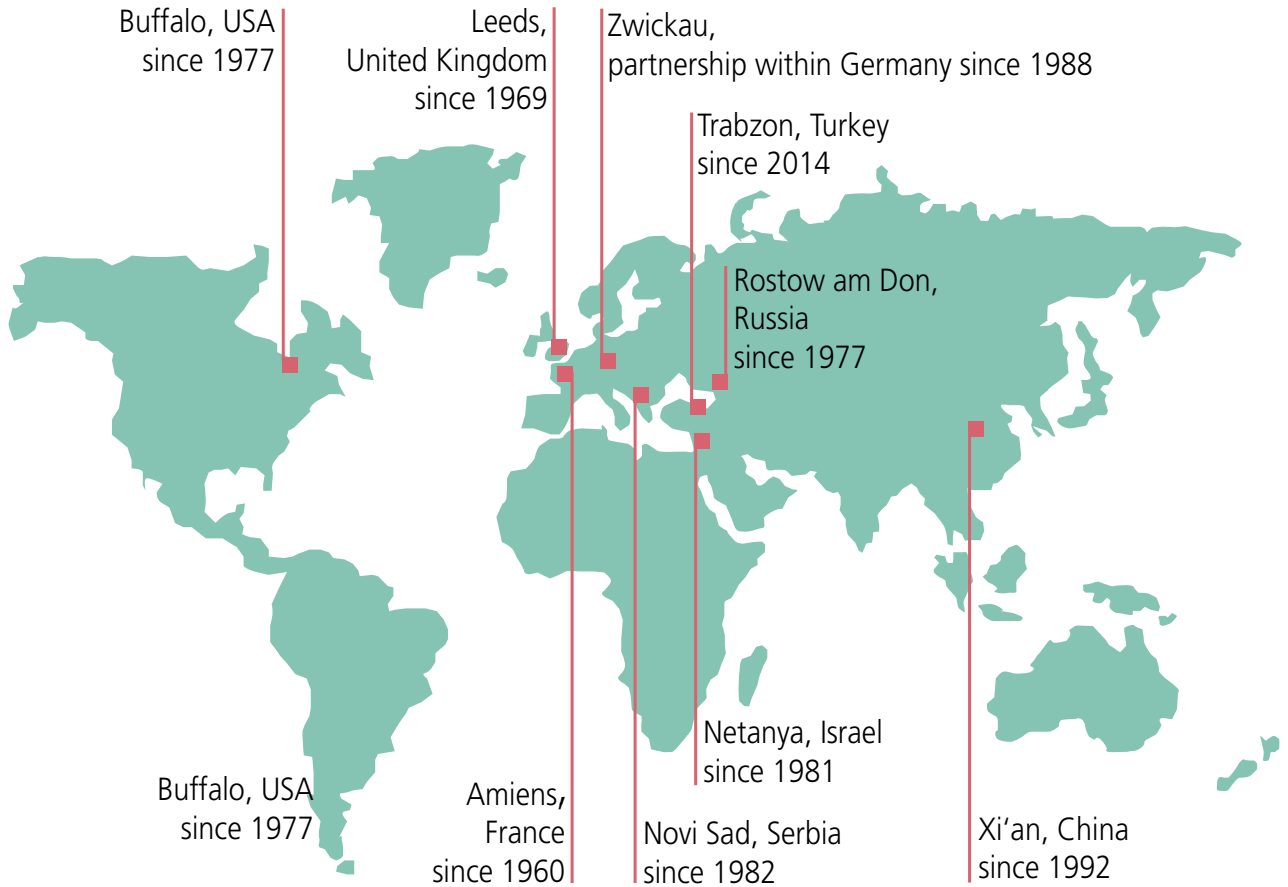
and the way we live together, we have to ensure everyone has equal opportunities. The continued existence of discrimination and exclusion show clearly that society still has to undergo fundamental change. All the people who live here should be appreciated, whatever their gender, nationality, ethnic origins, religion or world view, and whatever their disability, age, sexual orientation and identity. Recognising and promoting this diverse potential creates many advantages for us all and enriches our life together."



# TWIN TOWNS PARTNERSHIPS

## DIE NEUN PARTNERSTÄDTE DORTMUNDS

### THE NINE TWIN TOWNS OF DORTMUND



# OF DORTMUND



## AMIENS, FRANKREICH

### *AMIENS, FRANCE*

Die erste Städtepartnerschaft Dortmunds, die mit der französischen Stadt Amiens geschlossen wurde, besteht seit 1960. Amiens, 130 km nördlich von Paris gelegen, ist die Hauptstadt der Region Picardie und des Departement Somme. Die Einwohnerzahl von Amiens beträgt ca. 130.000. Besondere Bedeutung hat die Fülle von historischen, kulturellen und landschaftlichen Schätzen, die der Stadt Amiens die nationale Auszeichnung „Ville d’Art et d’Histoire“ („Stadt der Kunst und der Geschichte“) eingetragen hat.

*Dortmund's first twin town partnership with the French town of Amiens dates back to 1960. Amiens, 130 km north of Paris, is the capital of the Picardie region and Somme department and has a population of around 130,000. The city is renowned for its historical, cultural and scenic treasures which have earned Amiens the national Ville d'art et d'histoire (City of Art and History) award.*

[www.amiens.fr](http://www.amiens.fr)



## BUFFALO, USA

### BUFFALO, USA

Die Partnerschaft mit Buffalo wurde im Jahr 1978 mit Unterzeichnung der Partnerschaftsurkunde während der „Dortmunder Tage“ offiziell. Buffalo liegt am Ost-Ende des Eriesees im Staat New York und zählt ca. 260.000 Einwohnerinnen und Einwohner. Die Stadt ist geprägt von Fertigungsindustrien und damit ein bedeutender Wirtschaftsstandort. Doch auch die Wissenschaft hat eine hohe Bedeutung: in der Region Buffalo sind 15 Hochschulen und weitere Studieneinrichtungen angesiedelt. Das kulturelle Leben wird bestimmt durch eine Vielzahl von regelmäßig stattfindenden Festivals.

*The twinning with Buffalo became official in 1978 when the twinning document was signed during the "Dortmund Days". Buffalo is located on the eastern shores of Lake Erie in the state of New York and is home to approximately 260,000 residents. The city is marked by manufacturing industries and for this reason has become a major business location. Science is another significant factor: the Buffalo region has 15 colleges and universities in addition to other academic institutions. The city's cultural life features numerous festivals which are celebrated every year.*

[www.ci.buffalo.mn.us](http://www.ci.buffalo.mn.us)

## ROSTOW AM DON, RUSSLAND

### ROSTOV-ON-DON, RUSSIA

Der Ratsbeschluss für die Städtepartnerschaft mit Rostow wurde im Jahr 1977 gefasst, und die Unterzeichnung der Partnerschaftsurkunde erfolgte noch im selben Jahr. Rostow liegt am Ufer des Don, ca. 40 km nördlich der Mündung des Flusses in das Asowsche Meer. Sie zählt rd. 1,1 Mio. Einwohner und ist damit die zweitgrößte der Dortmunder Partnerstädte. Die wirtschaftliche Bedeutung der Stadt liegt vor allem in ihrer Funktion als Verkehrsknotenpunkt. Daneben ist die Wirtschaft geprägt von industrieller Produktion, vor allem Maschinenbau, Metallverarbeitung und Nahrungsmittelindustrie. Der Schwerpunkt des kulturellen Lebens in Rostow liegt in der Musik, besonders Jazz.

*Dortmund City Council passed a resolution to enter into a twinning agreement with Rostov-on-Don in 1977 and the official twinning charter was signed in the same year. The River Don flows through Rostov, which is located approximately 40 km north of the river's estuary, and into the Sea of Azov. Rostov has around 1.1 million residents, making it the second-largest of Dortmund's twin cities. Its economic significance is based mainly on the city's capacity as a traffic hub, while also being an important industrial centre, first and foremost for the mechanical engineering and metal processing sectors and the food industry. Rostov's cultural scene is known for its focus on music, especially jazz.*

[www.rostov-gorod.ru](http://www.rostov-gorod.ru)

## NETANYA, ISRAEL

### NETANYA, ISRAEL

Seit dem Jahr 1981 besteht die Partnerschaft mit Netanya in Israel. Netanya liegt an der Mittelmeerküste zwischen Tel Aviv und Hadera. Die Einwohnerzahl beträgt ca. 195.000, wobei ein steter Zuzug zu verzeichnen ist. Prägend für die Wirtschaft Netanyas sind der Tourismus und die Diamanten-Industrie, wobei auch andere Sektoren wie z. B. die Textil-, Kunststoff- und Pharmaindustrie wachsende Bedeutung gewinnen. Die Stadt verfügt über ein breit gefächertes Kultur- und Freizeitprogramm, verbunden mit der Möglichkeit, viele israelische Sehenswürdigkeiten in relativ kurzer Zeit zu erreichen.

*The twinning agreement with Netanya in Israel was signed in 1981. Netanya is located on the Mediterranean coast between Tel Aviv and Hadera. The city has a population of 195,000, which is constantly growing. Netanya's economy is based mainly on tourism and the diamond industry, with other sectors such as the textile, plastics and pharmaceutical industries gaining increasing importance. The city features a wide range of cultural and leisure facilities, and many of Israel's sights are only a short journey away.*

[www.netanya.muni.il](http://www.netanya.muni.il)

## NOVI SAD, SERBIEN

### NOVI SAD, SERBIA

Die Partnerschaft mit Novi Sad besteht seit 1982. Novi Sad, die Hauptstadt der Autonomen Provinz Vojvodina, liegt am Ufer der Donau. Sie hat ca. 250.000 Einwohner. Die Wirtschaft Novi Sads ist geprägt durch die industrielle Produktion. Die Wiederaufbauarbeiten nach den Zerstörungen des Krieges führten zu neuem Aufschwung. Bedingt durch die Lage am Ufer der Donau ist Novi Sad ein touristischer Anziehungspunkt. Besonderes Kennzeichen des kulturellen Lebens sind die dort lebenden unterschiedlichen Nationalitäten, die sich in Amateurgruppen in Kultur, Kunst und Folklore einbringen.

*Dortmund and Novi Sad have been twin cities since 1982. Novi Sad, the capital of the Autonomous Province of Vojvodina, is located on the shores of the River Danube and home to 250,000 residents. Novi Sad is a centre of the manufacturing industry. The reconstruction works following the destruction during the war have resulted in an economic revival. Due to its location on the shores of the River Danube, Novi Sad is a tourist magnet. Its thriving cultural scene benefits from different nationalities involved in a wide range of amateur culture, art and folklore groups.*

[www.novisad.rs](http://www.novisad.rs)

## LEEDS, GROSSBRITANNIEN

### LEEDS, UNITED KINGDOM

Die Städtepartnerschaft mit Leeds wurde im Jahr 1969 in Dortmund beurkundet. Leeds – im Zentrum Großbritanniens – ist das finanzielle und wirtschaftliche Zentrum in West Yorkshire und mit einer Einwohnerzahl von 751.500 die drittgrößte Stadt im Vereinigten Königreich. Der Dienstleistungssektor und die industrielle Produktion sind die bedeutendsten Wirtschaftsbereiche. Des Weiteren prägen zwei Universitäten, neun Fachhochschulen und eine lebendige Kulturszene das Bild der Stadt.

*The twinning charter with Leeds was officially signed in Dortmund in 1969. Located right in the middle of Great Britain, Leeds is the financial and commercial centre for the West Yorkshire urban area and is the UK's third largest city with a population of 751,500. Financial and legal services together with manufacturing make up Leeds's most significant economic sectors. The city has two universities and nine universities of arts and applied sciences and is renowned for its vibrant cultural scene.*

[www.leeds.gov.uk](http://www.leeds.gov.uk)

## XI'AN, CHINA

### XI'AN, CHINA

Die Partnerschaft mit Xi'an besteht seit 1992. Die Stadt liegt in der Guanzhong-Ebene und ist Hauptstadt der Provinz Shaanxi. Die Einwohnerzahl beträgt ca. 8,5 Mio., so dass Xi'an die mit Abstand größte der Dortmunder Partnerstädte ist. Kennzeichnend für die Wirtschaft Xi'ans ist die Industrie, wobei der Technologiesektor das größte Wachstumspotenzial aufweist. Die Kultur ist geprägt vom historischen Erbe der Stadt, das sich überall im Stadtbild zeigt. Daneben hat die Vielzahl von Forschungsinstituten und technologischen Entwicklungszentren Einfluss auf das Renommee Xi'ans.

*Xi'an has been a twin city of Dortmund since 1992. The city is located in the Guanzhong Plain and is the capital of Shaanxi province. Its population of around 8.5 million makes Xi'an the biggest by far among Dortmund's twin cities. Its economy is marked by industry, with Xi'an's technology sector featuring the largest growth potential. The city's culture descends from its historical heritage, traces of which can be found throughout its centre. In addition, its large number of research institutes and technological development centres has a major influence on the renown of Xi'an.*

[www.xa.gov.cn](http://www.xa.gov.cn)



## ZWICKAU, SACHSEN (DEUTSCHLAND)

### ZWICKAU, SAXONY (GERMANY)

Die partnerschaftlichen Beziehungen zur Stadt Zwickau wurden 1988, noch zu Zeiten der DDR, geschlossen und bestehen auch nach der Wiedervereinigung Deutschlands fort. Zwickau ist die viertgrößte Stadt Sachsens; sie zählt ca. 90.000 Einwohner. Die Wirtschaftsregion Chemnitz-Zwickau ist eines der wichtigsten Wachstumsgebiete in den neuen Bundesländern. Charakteristisch für das Erscheinungsbild Zwickaus ist die historische Bausubstanz aus sechs Jahrhunderten. Die Altstadt ist voller Zeugnisse vergangener Zeiten. Besonders zu nennen sind hier die Ratsschulbibliothek und der Dom St. Marien.

*The twinning charter with Zwickau was signed in 1988, during the era of the German Democratic Republic, and has continued to exist even after Germany's reunification. Zwickau is Saxony's fourth-largest city and has a population of around 90,000, the Chemnitz-Zwickau economic region being one of the most important growth areas in Germany's new federal states. Zwickau is marked by its carefully preserved buildings spanning six centuries. Its historic old town features relics of past centuries, such as the Library of the Council School (Ratsschulbibliothek) and the Cathedral of St. Marien.*

[www.zwickau.de](http://www.zwickau.de)

## TRABZON, TÜRKEI

### TRABZON, TURKEY

Die Städtepartnerschaftsurkunde wurde 2014 unterzeichnet. Somit schließt die Städtepartnerschaft an die seit 2010 bestehende Projektpartnerschaft an. Die Küstenstadt Trabzon liegt am östlichen Rand des Schwarzen Meeres. Die Einwohnerzahl beträgt etwa 234.000. Die Gründung Trabzons reicht bis in das 7. Jahrhundert v. Chr. zurück. In der Geschichte spielte die Stadt immer eine strategisch wichtige Rolle. Heute hat sie in der Türkei als größte Stadt in der östlichen Schwarzmeerregion eine besondere Bedeutung.

*The city partnership charter was signed in 2014, the twinning agreement continuing the project partnership between Trabzon and Dortmund which had been launched in 2010. The coastal city of Trabzon is located on the eastern shores of the Black Sea and has a population of around 234,000. Trabzon was founded in the 7<sup>th</sup> century B.C. and has played an important strategic role throughout history. Today it is particularly important as Turkey's largest town in the Eastern Black Sea region.*

[www.trabzon.bel.tr](http://www.trabzon.bel.tr)



Since 2007, long-standing civil-society alliances, round tables and stakeholders, the City Council and all communal facilities and administrative bodies have come together in a joint battle for diversity, tolerance and democracy on the basis of the “Action Plan Against Right-Wing Extremism”. Continued repressive pressure by the police is another essential factor. But all that is not enough. We want to drive right-wing extremism from our liveable and lovable city. We still need even more moral courage and democratic resistance.

HARTMUT ANDERS-HOEPGEN  
THE LORD MAYOR'S SPECIAL REPRESENTATIVE FOR  
DIVERSITY, TOLERANCE AND DEMOCRACY

## WE ARE ALL DORTMUND

So far, 262 organisations and 156 individuals have joined the “Wir ALLE sind Dortmund” (We are ALL Dortmund) campaign. Its organisers would like many more residents, organisations, associations and federations to show their commitment to tolerance and diversity of opinion, against all forms of racism, anti-Semitism, Islamophobia and xenophobia.

“We want to show that we stand together in Dortmund,” is the appeal of the Dialogkreis der Abrahamsreligionen and the City of Dortmund. Just send an e-mail to the MIA-DO-Kommunales Integrationszentrum Dortmund (Municipal Integration Centre Dortmund) at [miadoki@dortmund.de](mailto:miadoki@dortmund.de) to join the list of campaign supporters.

[www.wirallesind.dortmund.de](http://www.wirallesind.dortmund.de)

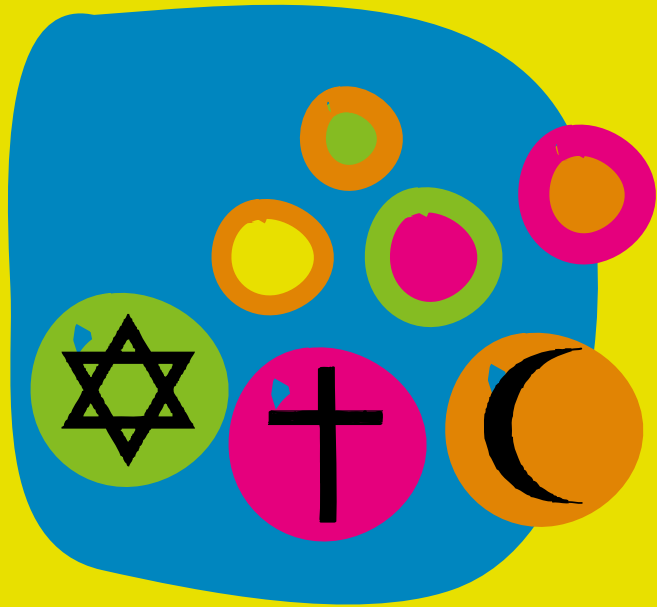
## THE APPEAL

“We are menaced by terror attacks and threats of violence. Hate slogans sow discord. There is also racism and racial fanaticism in Dortmund.

It is true: we are ALL different and our coexistence is not free of conflicts. But: as residents of Dortmund, we will not allow ourselves to be divided! Together we stand up for respect and tolerance, for the freedom of opinions, living together in a spirit of solidarity in an open and plural society. Whether we are Christians, Muslims, Jews or believe in a different religion or ideology, independent of origins and cultural backgrounds:

We will stand together against xenophobia, Islamophobia and anti-Semitism! Religious communities for peace and dialogue! Dortmund will continue to be open to the world and a tolerant city! Because: we are ALL Dortmund!”

wir **alle**  
sind Dortmund



[www.wirallesind.Dortmund.de](http://www.wirallesind.Dortmund.de)

**DIALOGKREIS DER ABRAHAMSRERELIGIONEN:**

Evangelischer Kirchenkreis Dortmund | Jüdische Kultusgemeinde Groß-Dortmund  
Katholische Stadtkirche Dortmund | Rat muslimischer Gemeinden Dortmund





With around 52,000 students, Dortmund is one of the largest university cities in Germany – and it’s still growing. Around 60 percent of the students stay in the region after they graduate. The importance of science for society and the economy here is also certain to grow. And we support that at the FH Dortmund with our practice-oriented courses and numerous transfer projects.

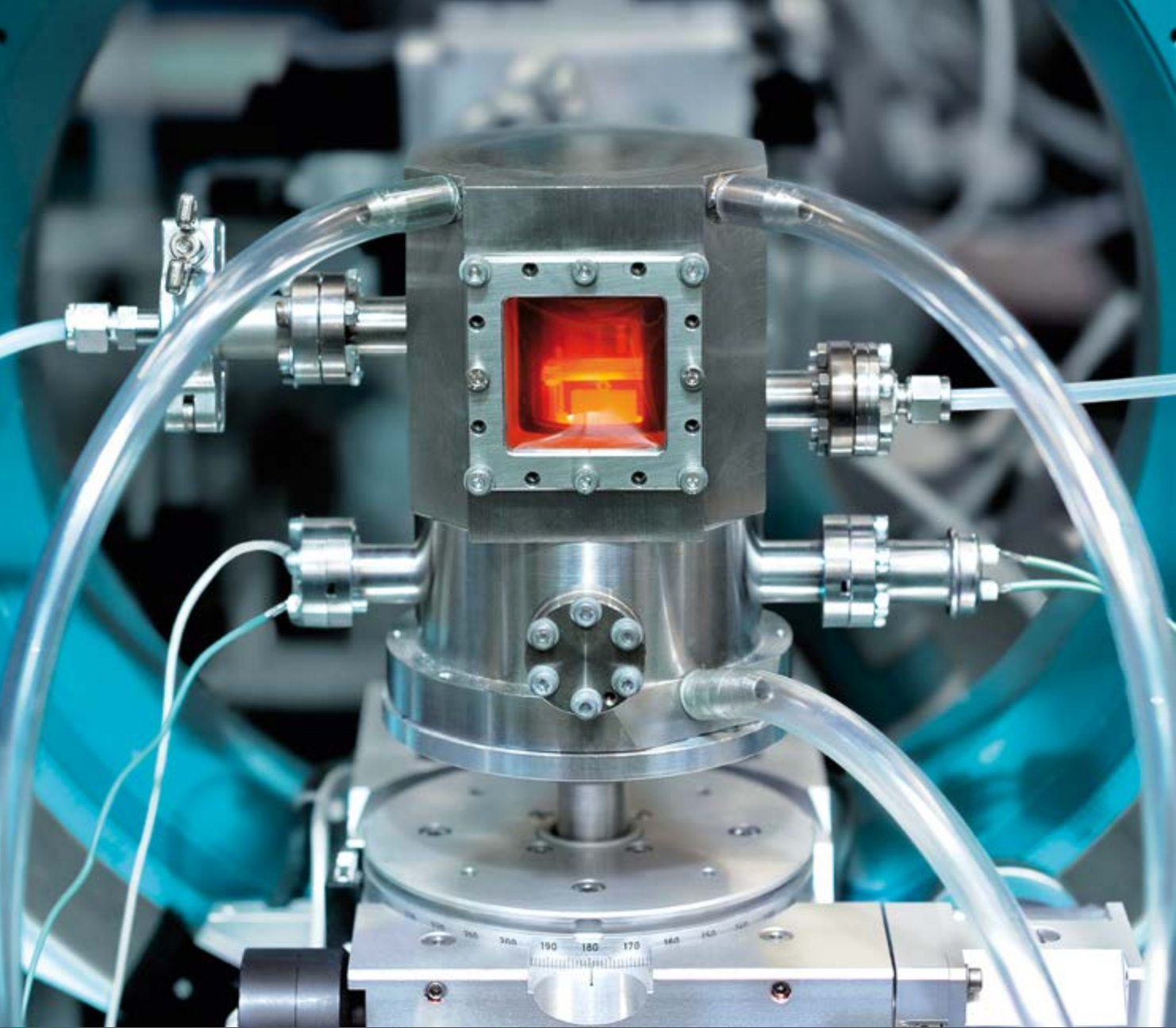
PROF. DR. WILHELM SCHWICK  
VICE CHANCELLOR, DORTMUND UNIVERSITY OF APPLIED SCIENCES AND ARTS

”

Dortmund is a City of Science. This is also emphasized by the Masterplan Science Dortmund, which will strengthen the links between the city and the science community with 100 different measures and activities.



PROF. DR. URSULA GATHER  
CHANCELLOR OF THE TU DORTMUND UNIVERSITY



ONE CITY.  
LOTS OF KNOWLEDGE.

# ONE CITY.

WITH SEVEN UNIVERSITIES AND 19 RENOWNED NON-UNIVERSITY RESEARCH ESTABLISHMENTS, OUR CITY PROVIDES AN OUTSTANDING ENVIRONMENT FOR RESEARCH. | THE IMPERIAL ENGINEERING SCHOOL WAS FOUNDED 125 YEARS AGO AND WAS ONE OF THE PREDECESSORS OF TODAY'S UNIVERSITY OF APPLIED SCIENCES AND ARTS DORTMUND. | THE MUNICIPAL ONLINE PORTAL WWW.ZUKUNFTSFINDER.DE HAS BEEN PRESENTED WITH THE MOST IMPORTANT GERMAN AND EUROPEAN AWARD FOR DIGITAL EDUCATION MEDIA - THE COMENIUS-EDUMEDIA-MEDAL. | THE ORCHESTERZENTRUM|NRW IN DORTMUND IS THE FIRST INTER-UNIVERSITY EDUCATIONAL ESTABLISHMENT FOR FUTURE ORCHESTRA MUSICIANS AND MUSICIANS. | DASA IS THE WORLD'S LARGEST INTERACTIVE EXHIBITION ABOUT THE WORLD OF WORK.

THE APPROXIMATELY 52,000 STUDENTS AND 10,000 EMPLOYEES IN DORTMUND'S SCIENTIFIC INSTITUTES AND UNIVERSITIES ACCELERATE SO-

CIAL AND ECONOMIC CHANGE. | THE TU DORTMUND UNIVERSITY, WITH ITS DORTMUND ELECTRON ACCELERATOR (DELTA), HAS THE WORLD'S ONLY SYNCHROTRON LIGHT SOURCE FOR PARTICLE ACCELERATION WHICH IS OPERATED BY A UNIVERSITY. | THE FOOTBALL ROBOTS AT THE INSTITUTE FOR ROBOT RESEARCH AT THE TU DORTMUND UNIVERSITY REGULARLY END UP NEAR THE TOP IN WORLD CHAMPIONSHIPS. | THE CHILDREN AND YOUTH TECHNOLOGY CENTRE KITZ.DO PROMOTES SCIENTIFIC EXPERIMENTATION FROM AN EARLY AGE. | THE MASTERPLAN SCIENCE HAS 100 PRACTICAL AND VISIONARY MEASURES TO FOCUS DORTMUND'S IMAGE AS A CITY OF SCIENCE. | THE FRITZ-HENSSLER-BERUFSSKOLLEG IS THE ONLY VOCATIONAL COLLEGE RUNNING APPRENTICESHIPS FOR DISTILLERS IN GERMANY.







## GEL WITH A FUTURE

TU-RESEARCHERS DEVELOP  
UNIQUE BIO-MATERIAL

It's made of up to 90 percent water but it's ultra-stiff and extremely tough. The gel developed by Prof. Jörg Tiller and postgrad Nicolas Rauner at the Faculty of Biochemical and Chemical Engineering at the TU Dortmund University is seen as a milestone for research and has already found international acclaim. In the future, this new material could be used as a pressure-stable separation membrane for seawater desalination or as a highly porous electrode material for batteries or fuel cells.

The inspiration for this artificial product was provided by nature – by biomineralization to be precise, a most fascinating biochemical process. Biominerals are found in teeth and bones as well as in snail shells, mussels and crustaceans. Scientists have been looking into their fine structures for many years to use them for artificial materials. One such artificial material is the new hydrogel which the TU researchers have developed.

Jelly is one of the well-known everyday hydrogels which consists almost exclusively of water, but it is neither stiff nor tough. But scientists have now succeeded in making a glass-like material out of such wobbly gel, that can only be deformed by applying force and yet is still very elastic. The fact that the new hydrogel unites these two properties is due to its special structure which has been achieved through biomineralization: special enzymes were distributed throughout the material which set off a structural formation process, so that a hard and well-ordered nanostructure is created – a stable network which is responsible for the special properties. "Our material consists

of a polymerhydrogel and calcium phosphate, which, for example, occurs in bones," Nicolas Rauner explains in more detail.

Monika Meuris at the Center for Electron Microscopy and Materials Research (ZEMM) at the TU Dortmund took care of the complex analysis of the nanostructures. In future the scientists want to use this sort of material production to reproduce natural composite materials similar to those found in sea-shells or bones.

This work in Dortmund has been published in "Nature", the highly respected science magazine.



Prof. Jörg Tiller (right) and Nicolas Rauner (left) from the Faculty of Bio- and Chemical Engineering at the TU Dortmund have made a breakthrough with the bio-gel. Monika Meuris is responsible for the electron microscopy.

# THE BEARABLE LIGHTNESS OF CYCLING

## INNOVATIVE E-BIKE FROM THE FH-WORKSHOPS



Inventors and bicycle experts (from left): Alexander Koplow (das Rad) and the University of Applied Science professors Wilfried Fischer and Stefan Hesterberg.



Light and effortless: What only weighs 15 kilos, runs on electricity and gets active people from A to B? The “Pedersen”. Prof. Wilfried Fischer and his colleague Prof. Stefan Hesterberg from the Dortmund University of Applied Sciences (FH) have delighted both experts and cyclists with their novel e-bike. The construction is based on the legendary Pedersen bicycle.

Alexander Kopplow, managing director of “Das Rad”, was aware of the Pedersen bicycle – a vehicle developed by the Dane Mikael Pedersen in 1890: He built a frame out of triangles around a suspended saddle woven like a hammock – light but very stable.

Kopplow contacted Fischer with the idea of applying the Pedersen principle to e-mobility. The professor, working in the Mechanical Engineering department at the University of Applied Science, is well known as an inventor. “We’re always busy working on anything and everything that can be manufactured with lightweight engineering: including go-carts and cargo-bikes, like the ones used by couriers. So, this sounded great to me from the start”.

## READY TO GO INTO PRODUCTION SOON

E-bikes weigh 25 kilos on average. Fischer and his team got down to work and were already able to present their first prototypes at Europe’s largest e-bike fair in Dortmund in April 2016. “It’s makes for a great ride”, says Fischer. “The material of the bike reacts to tension and pressure, and not to bending”, he explains. The aim was to connect sustainable drives technology with extreme light-



The world’s biggest e-bike festival was enjoyed by enthusiastic exhibitors, fans and visitors in April 2017.

ness. Pedersen construction techniques combined with lots of carbon, stable aluminium and the right motor led to the breakthrough. “We are currently optimizing all the components of the bike to save even more weight”, says the professor, giving us an insight into their latest research.

He wants to go into serial production in the coming year: “Just a mini-series to start with, intended more for particularly solvent clients.” You just can’t get so much innovative technology at a discount price.





# THE DINSING DISTILLERY

## FIRST WHISKY FROM DORTMUND ON ITS WAY

because we are storing it in old red wine barrels.” They originally came from a vineyard in France, near the Loire. Dinsing reckons he will end up with 1,200 bottles.

” In a way, this is an experiment.  
But we reckon something good  
is going to come out of it.

DIRK DINSING  
DISTILLER AND FARMER

It started off as a bit of fun among friends: Why not produce Dortmund's first whisky? “We are actually specialists for Korn Schnapps”, Dirk Dinsing tells us. But in the end the 55 year old gave in to his cajoling companions, Gunter Overkamp-Klein and Matthias Erve, and got down to work. It turned out to be a great success: two and a half years from now, at the end of 2019, the first Dortmund whisky will be good to go. Gasthaus Overkamp will get the first barrel – and that's a promise. “Gunter reserved that a long time ago”; Dinsing explains. The second one goes to Steffenhof, Matthias Erve's farm shop in Benninghofen. The farmer and schnapps distiller still hasn't come up with a name. “We'll decide on that later.” What he does know is what colour the noble drink will have. “Bronze with a hint of red,

But that's a long way off. The process for producing whisky is complex: at the end of November 2016 the schnapps distiller took a ton of grain – consisting of 800 kg of barley and 200 kg of caramelised malt – and crushed it down to make 4,000 litres of mash. Fermentation is then followed by two distillations, among other things to eliminate unwanted by-products. When the fine distillate has been distilled to 85 percent, it is diluted for storage, so the alcohol content is only 65 percent. This is followed by three years in wooden barrels which must not exceed a capacity of 700 litres.

# GIVAUDAN

## GLOBAL MARKET LEADER FOR FLAVOURS AND FRAGRANCES

The liquid flavours leave the company's site in Dortmund in huge containers. Trucks then transport them to customers throughout Europe. Here, opposite the Customs Office East in Wickede, is the German branch of GIVAUDAN – world leading producer of flavours and fragrances. The Swiss company, founded in Geneva in 1895 and merged with the Westfälische Essenzenfabrik in 1989 to form GIVAUDAN Deutschland GmbH, is constantly researching extraordinary taste and fragrance experiences.



One of GIVAUDAN's key focuses is on research into new flavour and fragrance experiences.

25 percent of the world's perfumers and 40 percent of all flavourists work for GIVAUDAN. Their aromas and fragrances are ingredients in drinks, sweets, milk products, spices and gourmet food. GIVAUDAN has 10,480 staff around the world, 260 of them are in Dortmund. Turnover in 2016 in Germany reached 160 million Euros. The headquarters of GIVAUDAN is in Vernier near Geneva and the group operates at 95 locations in over 40 countries. 35 locations are production facilities.



”

Borussia Dortmund plays from the hearts of the people and is the most important advertising for a city that has successfully dealt with structural change.



HANS-JOACHIM WATZKE  
CHAIRMAN OF THE MANAGEMENT BOARD AT BVB

”

Coal, steel and beer have all but disappeared, but BVB remains a constant. The people in this city and their club are at one with each other.



DR. REINHARD RAUBALL  
PRESIDENT OF BORUSSIA DORTMUND

”

All the way up. Nobody can stop me. All that happens here. When I want to strengthen my mental and physical capabilities, then I even prefer Dortmund to New York.



CHRISTINA HAMMER, WORLD BOXING CHAMPION





ONE CITY.  
LOTS OF SPORT.



# ONE CITY. LOTS OF SPORT.

81,360 SPECTATORS FIT IN THE SIGNAL IDUNA PARK STADIUM, MORE PEOPLE GO TO WATCH FOOTBALL AT BVB HOME GAMES THAN ANYWHERE ELSE IN EUROPE. | DORTMUND IS A FEDERAL PERFORMANCE CENTRE FOR SPORT AND THE OLYMPIC TRAINING CENTRE FOR GERMANY'S ROWING EIGHT; AND THE ROWERS COLLECTED THAT HIGHLY DESIRED OLYMPIC GOLD MEDAL IN LONDON. | DORTMUND IS ALSO THE OLYMPIC TRAINING CENTRE FOR MANY OTHER SPORTS, E.G. FIGURE SKATING, ATHLETICS, SHOOTING OR SWIMMING. | ALMOST EVERY THIRD DORTMUNDER IS A MEMBER IN ONE OF THE 530 SPORTS CLUBS IN THE CITY. | THERE ARE AROUND 800 SPORT FACILITIES IN DORTMUND. | ABOUT 30 WORLD CHAMPIONSHIPS AND OVER 50 EUROPEAN CHAMPIONSHIPS HAVE BEEN BATTLED OUT IN THE WESTFALENHALLE - LIKE THE TABLE TENNIS WORLD CHAMPIONSHIP 2012. DORTMUND IS ALSO AT THE FOREFRONT WITH SPORTS LIKE AMERICAN FOOTBALL AND BASEBALL. | **IN 2013 DORTMUND WAS THE LOCATION FOR THE 9TH WORLD BADMINTON CHAMPIONSHIPS FOR PEOPLE WITH DISABILITIES - THE PARA-BADMINTON WORLD CHAMPIONSHIP** | IN THE LEGENDARY GOLD HALL, ON 28 JULY 1962, THE DFB DECIDED TO FOUND THE BUNDESLIGA FOOTBALL LEAGUE. | HIGHWAY CART RACING, DORTMUND: THE 1,600 METRE INDOOR CART TRACK IS THE LONGEST IN THE WORLD. | THE SPARKASSE CHESS MEETING IS ONE OF THE MOST FAMOUS INTERNATIONAL CHESS TOURNAMENTS IN THE WORLD. | THE FORMER HANSA COKING PLANT IS NOW HOME TO THE LARGEST CLIMBING HALL IN NORTH RHINE-WESTPHALIA. | THE ICE EAGLES DORTMUND AND THE ERC WESTFALEN FIGURE SKATING CLUB ARE NOT THE ONLY ONES TO THINK THE ICE SPORT CENTRE AT THE WESTFALENHALLEN DORTMUND IS COOL. | DORTMUND LOVES ITS BVB.







## DORTMUND IS A PARA- BADMINTON POWERHOUSE

KATRIN SEIBERT, VALESKA KNOBLAUCH AND  
YOUNG-CHIN MI - WORLD CLASS PLAYERS

The first photo shows Katrin Seibert, who has five gold, two silver and three bronze medals to her name – one of the pillars of the German para-badminton national team. The next photo is of Valeska Knoblauch and her partner Young-Chin Mi – two more excellent sports people from Dortmund. Their disabilities are no handicap when it comes to success. Badminton is not just about knocking a shuttlecock back and forth in the park. Badminton is all about hitting power, coordination and fast reactions.



The German national team earned itself a lot of respect at European level at the last European Para-Badminton Championship in October 2016 in Beek, in the Netherlands. Team Germany secured three gold medals, four silver and four bronze. With 143 participants from 21 nations, there were certainly a lot of top class players to compete against. Katrin Seibert (1. BC Dortmund) was a player in the SL4 standing lower class who really excelled: the 46-year-old won gold in the singles, bronze in the mixed doubles and silver in the doubles. Dortmund is now a real powerhouse for para-badminton. Valeska Knoblauch (RGB Dortmund) was also at the European Championship in Beek and took silver in the women's doubles in the wheelchair class WH1-2 and in the women's singles WH1. The 26-year-old also got her third medal – bronze – with her partner Young-Chin Mi (RGB Dortmund) in the mixed doubles WH1-2.

All three of them are involved in intensive training in preparation for the next challenges: the German Championships in Berlin in May 2017 are quickly followed by the World Championships in November 2017 in Korea. The Asian competition is unbelievably strong, but the successful trio from Dortmund also has a lot of World Championship experience. For Seibert, Knoblauch and Mi it is their third World Championship after England (2015) and Germany (2013). Their long-term goal is to take part in the Paralympics 2020 in Tokyo where para-badminton will be recognized as an Olympic discipline for the first time. Valeska Knoblauch hopes this will give their sport a big boost. "The enthusiasm which was triggered by the Paralympics in London 2012 showed me that disabled sport – and I also mean wheelchair sport – does not need to hide itself in the shadows." The Dortmund sportswoman, as a "Winner", is also a face of the "Let's get things rolling together!" inclusion campaign run by the German Wheelchair Sports Association.



# AMAZING DORTMUND.

## DID YOU KNOW...?

... at their game against Hertha BSC (1:1) on 14.10.2016, Borussia Dortmund was the first club in the history of the Bundesliga to break the 40 million mark for the number of spectators at Bundesliga home games. \*

\*(Source: [www.stadionwelt.de](http://www.stadionwelt.de))





[www.dortmund-überrascht-dich.de](http://www.dortmund-überrascht-dich.de)

[f](#) [t](#) [i](#) #DoÜberrascht



”

Dortmund provides the best possible level of professional challenges. Networking doesn't just happen online, but in real life as well.

CHRISTIAN TACKE  
MANAGING DIRECTOR OF DORTMUNDERISCH

“

A high concentration of universities, cool graduates, cooperating entrepreneurs: that is why IT companies have got it so

” good in Dortmund!

VOLKER GRUHN  
ADESSO

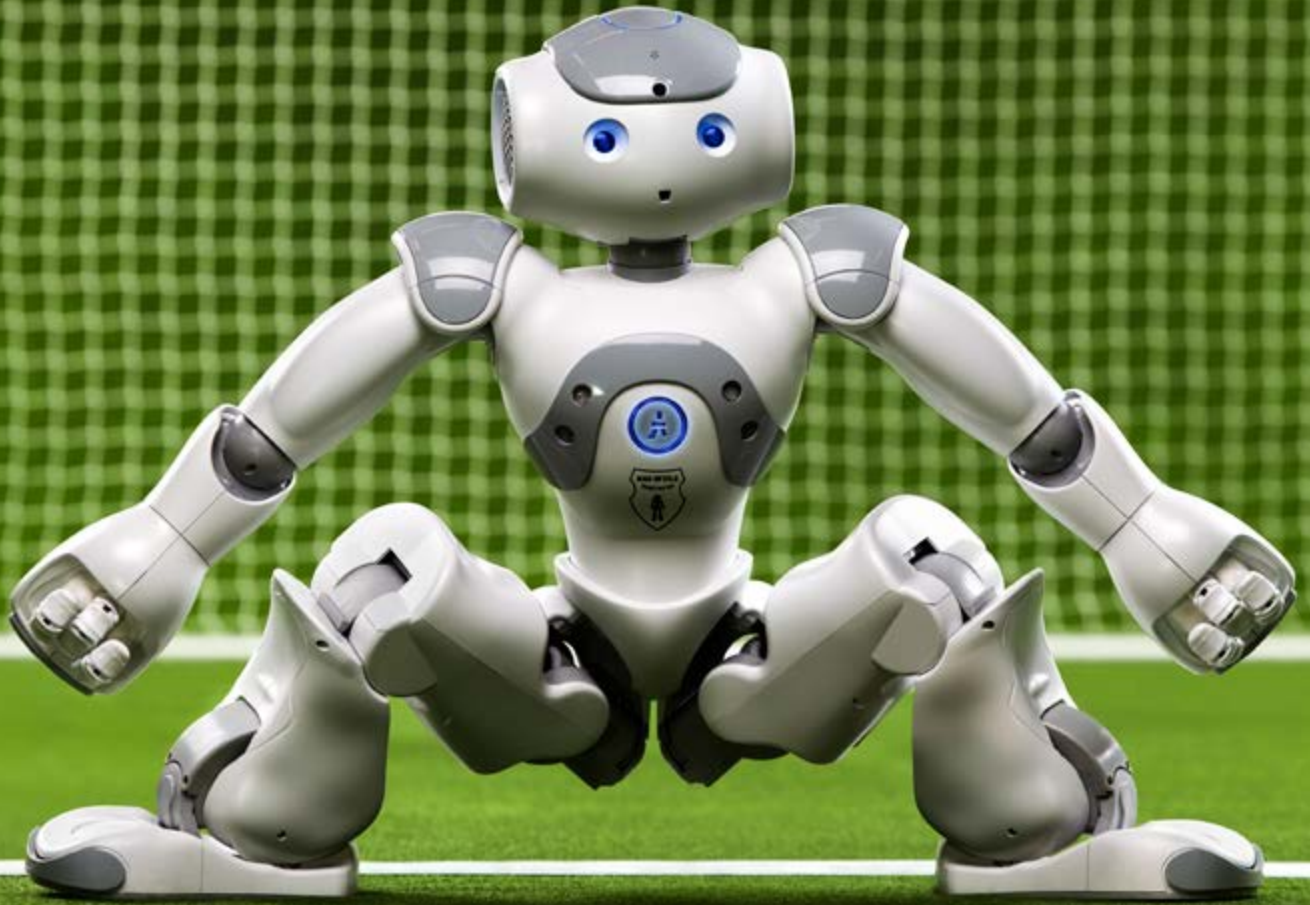


Anyone who grew up in Dortmund and lived through the changeover from coal and steel to technology, knows the values of our city: even in these times of radical digitalization, it is still the people who are most important.

“

ANDREAS HEIERMANN  
EXECUTIVE AT GREEN IT  
DAS SYSTEMHAUS GMBH





ONE CITY.  
LOTS OF TECHNOLOGY.

# ONE CITY.

THE DORTMUND COMPANY SCIENCE.D.VISIONS DEVELOPED THE SOFTWARE WHICH ENABLED GANDALF TO FLY OVER MIDDLE EARTH IN THE LORD OF THE RINGS FILM. | EVERYONE PRESSES A SWITCH MANUFACTURED IN DORTMUND AT LEAST ONCE A DAY. | THE FIRST SMS TEXT MESSAGE FOUND ITS WAY ONTO MOBILE PHONES WITH THE HELP OF THE DORTMUND COMPANY MATERNA. | THE FRAUNHOFER INSTITUTE FOR SOFTWARE AND SYSTEM TECHNOLOGY FROM DORTMUND SUPPLIED THE NAVIGATION SOLUTIONS USED AT THE OLYMPIC GAMES IN PEKING. | DORTMUND'S FINEST MEDICAL MIST HELPS ASTHMA PATIENTS. | LIGHT TECHNOLOGY FROM DORTMUND ILLUMINATES BLACK HOLES. | WITH AROUND 280 COMPANIES AND OVER 8,500 STAFF, THE TECHNOLOGIEPARK IS ONE OF THE MOST SUCCESSFUL IN EUROPE.

**AROUND 1,900 COMPANIES FROM THE FIELDS OF IT, LOGISTICS, MICRO AND NANOTECHNOLOGY AND BIOTECHNOLOGY EMPLOY MORE THAN 45,000 PEOPLE IN DORTMUND.** | THE WORLD'S LARGEST EXPERIMENTS ABOUT APPLYING ARTIFICIAL INTELLIGENCE IN LOGISTICS TAKE PLACE IN THE CENTRE FOR CELLULAR MATERIAL HANDLING (ZFT) IN DORTMUND. | THE MST.FACTORY DORTMUND ON PHOENIX WEST IS THE FIRST EUROPEAN ESTABLISHMENT TO PROVIDE PROFESSIONAL TECHNICAL INFRASTRUCTURE FOR FOUNDERS AND COMPANIES IN THE FIELD OF MICRO AND NANOTECHNOLOGY. | DORTMUND IS ONE OF THE MOST IMPORTANT CLUSTERS FOR MICRO AND NANOTECHNOLOGY IN EUROPE. | AT THE DORTMUND SURFACE TECHNOLOGY CENTRE (DOC), THYSSENKRUPP STEEL AG RUNS ONE OF THE WORLD'S MOST HIGH-PERFORMANCE DEVELOPMENT CENTRES FOR STEEL SURFACES. | DORTMUND IS ONE OF FIVE LOCATIONS IN GERMANY FOR THE FOUR-METRE TALL TITAN KRIOS ELECTRON MICROSCOPE; WHICH RESEARCHES INTO STRUCTURES AND FUNCTIONS OF PROTEINS IN CELLS.





# STRONG PERSONALITIES. STRONG PRODUCTS.

SEMI-CONDUCTORS FROM ELMOS.  
MAKING INTELLIGENT CARS POSSIBLE.





Dr. Anton Mindl,  
CEO at Elmos Semiconductor AG

What actually is a semi-conductor? A semi-conductor is a small electronic switch which takes care of lots of the comfort and safety functions in cars: it's often Elmos semi-conductors which are responsible when your parking sensor system beeps, when the airbag is triggered, or when you get the right climate inside your car. 85 percent of their turnover is achieved with components for the automotive industry. So Elmos is very closely involved in creating the cars of tomorrow and contributes to making driving safer, more comfortable and more energy efficient.

As a specialist producer of semi-conductors, Elmos plays a key role. "We are the first port of call when new functions are needed; not only for our customers, but also for their customers – the car manufacturers", Dr. Anton Mindl reports. The Chairman of the Board knows exactly which smart device we will be wanting next, now we all have smartphones and tablets: "The next smart device is the car, which is exactly the product environment Elmos has been at home in for decades." Today, Elmos is already the world's market leader for trendsetting applications such as gesture control, parking sensor systems and LED ambience lighting inside cars.

The company is truly global, with sites in Europe, Asia and the USA. Their global position is particularly apparent in the figures: more than one third of their 229 million Euros sales in the year 2016 (2015: 220 million Euros) were achieved with customers from Asia. In 2017, the company wants to grow even more strongly. The Chairman of the Board at Elmos Semiconductor AG explains it like this: "We are building our company on strong foundations, on worldwide megatrends for the mobility of the future. Statistically speaking, every new car in the world has around four Elmos semi-conductors in it. We are dedicated to making sure there are even more in future."

Elmos started out in 1984 as the first company in the TechnologieZentrum Dortmund. Today more than 1,100 staff work for the company.



“HOW DO WE WANT TO  
GET AROUND DORTMUND  
IN THE FUTURE?”





This is the question the City wants to answer with its Masterplan Mobility 2030, which it is creating in cooperation with Dortmund's citizens. In a first step, the city wants to work out an overall concept and then, in a second step, decide on specific measures that can be taken. The growing number of inhabitants, jobs and commuters create a challenge which the city has to deal with. At the same time, climate protection, barrier-free accessibility and e-mobility have all gained in importance. This plan aims to ensure access to the city centre can still be guaranteed and that the air will be cleaner.

After the concept discussions have taken place, measures to foster e-mobility and a sub-concept for keeping the air clean will be defined. Further sub-concepts, such as for more pedestrian and cycle routes could also grow out of the Masterplan Mobility 2030. Today, Dortmund is already streets ahead of comparable cities when it comes to the proportion of pedestrians and the use of buses and trains. But there is still a lot of potential for increasing cycle traffic even more by 2030. In addition to extending cycle routes such as with the Ruhr Cycle Super Highway (Radschnellweg Ruhr (RS1), one of the factors is the strong presence of the "metropolradruhr" bike rental system which has over 60 rental stations in Dortmund. The rental figures for the 400 rental bikes which are distributed throughout the city are constantly increasing. Electromobility is already an important component of the city's sustainability strategy, for which it was already awarded the "German Sustainability Prize" in 2014. Dortmund is seen, both nationally and internationally, as a leading municipality for electro-mobility, a third of the municipal car fleet is already powered by electricity. And, with 180 charging stations spread throughout the city, the charging infrastructure already provides very good coverage.

Public transport is also on the up: From the year 2019, the S1 city-train route which runs between Dortmund and Solingen crossing right through the Ruhr Region, will be running every 15 instead of just every 20 minutes. It is hoped that the Rhine-Ruhr-Express will improve the local transport situation. The extensive long-distance train network here also pays an important contribution to the sustainability of traffic systems. In addition to the ICE trains which run from here, the French high-speed Thalys train to Paris has been officially setting off from Dortmund station since March 2016.





I came across an old brand of Dortmund beer by chance. That's why we have such strong – and such enjoyable – connections to Dortmund. When I was young, there were eight breweries in Dortmund, we were the largest beer city in Europe and the second largest in the world. That was our starting point for remembering the city's diverse beer culture. And Dortmund deserves it. We want to add yet another approach to the many others which are dealing with structural change.

DR. THOMAS RAPHAEL, BERGMANN-BEER BREWER



Dortmund will be the number one digital location for the Wilo Group, and it is our mission to set benchmarks in the Wilo world and in the pumps industry as a whole. ”

OLIVER HERMES, CEO OF WILO SE  
AND WINNER OF THE "CITIZEN OF THE RUHR REGION 2014" AWARD



ONE CITY.  
LOTS OF BUSINESS.



# ONE CITY. LOTS OF BUSINESS.

GERMANY'S BIGGEST MONEY BIN IS BEING CONSTRUCTED IN DORTMUND. | THE WESTENHELLWEG IS ONE OF THE FAVOURITE SHOPPING STREETS IN GERMANY. | THE WORLD'S LARGEST HYDRAULIC EXCAVATORS ARE BUILT IN DORTMUND. | 1,200 SUCCESSFUL START-UPS AND MORE THAN 6,200 NEW JOBS – THAT'S WHAT 36 START2GROW FOUNDERS' CONTESTS HAVE ACHIEVED SINCE 2001. | WITH ITS ALMOST TWO MILLION PASSENGERS AND EXCELLENT CONNECTIONS TO EASTERN AND CENTRAL EUROPE, DORTMUND AIRPORT IS ONE OF GERMANY'S 22 INTERNATIONAL AIRPORTS AND A KEY ELEMENT IN GERMANY'S AIR TRANSPORT SYSTEM | TOURISM IN DORTMUND GENERATED 1.4 BILLION EUROS IN 2013 – A SIGNIFICANT ECONOMIC FACTOR FOR THE CITY | THE STORAGE SPACE IN IKEA'S EUROPEAN CENTRAL DISTRIBUTION CENTRE IN DORTMUND IS THREE TIMES AS BIG AS THE VATICAN. | THE 33,000 M<sup>2</sup> THIER GALERIE IS ONE OF THE MOST INNOVATIVE NEW SHOPPING CENTRES IN EUROPE. **ACCORDING TO A LINKEDIN SURVEY, THE MOST SATISFIED EMPLOYEES IN**

**GERMANY LIVE IN DORTMUND.** | IN DORTMUND THE NUMBER OF OVERNIGHT STAYS INCREASED BETWEEN 2005 AND 2015 BY 63.1 PERCENT TO 1,134,632. | IN A LITTLE CORNER OF DORTMUND THE FITTINGS FOR THE PRIZEWINNING APPLE STORES ARE PRODUCED. | THE CANALS, ROADS AND RAILWAY TRACKS IN DORTMUND'S HARBOUR LINK THIS INTERNATIONALLY SIGNIFICANT INDUSTRY AND LOGISTICS LOCATION WITH THE COMPLETE EUROPEAN TRANSPORT SYSTEM. | AROUND 3,400 SPECIALIST SHOPS ON MORE THAN 859,000 M<sup>2</sup> MAKE DORTMUND SUCH A LIVELY SHOPPING CITY. | DORTMUND IS ONE OF THE COUNTRY'S MOST ATTRACTIVE CITIES FOR FOREIGN RETAIL CHAINS.





# WILO SE

## WORLD MARKET LEADER INVESTS 100 MILLION IN NEW CAMPUS

International company WILO confirms its commitment to the location of Dortmund. The pumps specialist is investing 100 million Euros in constructing the “WILO Campus”. In addition to a new office complex for this fast-growing company, a new ultra-modern “Smart Factory” is also being created. A huge project – covering an area as big as 26 football pitches.

WILO has been growing for years. CEO Oliver Hermes presented an increase in turnover for the seventh time in a row. The pumps specialist achieved over 1,300 million Euros in 2016 and Hermes is confident that WILO can continue to grow in 2017, in spite of the strained geo-political situation.

The Dortmund company's latest product is certain to pay a contribution to this as well. The “WILO-Stratos MAXO”, the first smart pump in the world, is even more efficient and versatile than previous products from the company, and can also be continuously improved by means of software updates.

The “Stratos MAXO pump” is just one example of WILO's successful research work. All in all, 65 million Euros of funds were pumped into research and development – more than ever before. A strong basis for continuing their profitable course for growth, the target set by CEO Oliver Hermes.





Another investment for the future is another building on the new WILO Campus, the largest site development project in the company's history. In October 2016 Minister President Hannelore Kraft laid the foundation stone for WILO's new Smart Factory which is to open in 2019, with completion of the whole Campus set for 2022.

All this sees WILO getting ready for even more worldwide growth. Markets in China, Russia, Korea and Africa have developed particularly strongly in recent years. And their US subsidiary has also taken over another pump manufacturer, the Weil Pump Company. With products "Made in USA", WILO wants to strengthen its position on the North American market and continue to grow there as well.



The Board at WILO (from the left): Dr. Markus Beukenberg (CTO), Eric Lachambre (COO), Oliver Hermes (Chairman of the Board & CEO), Mathias Weyers (CFO), Carsten Krumm (COO)







# AWARD-WINNING ENERGY CAMPAIGN

PHOTOVOLTAIC-SYSTEM  
STRENGTHENS CITIZENS' COMMITMENT





The city is still proud of winning this title: in November 2014, Dortmund was proclaimed “Federal Capital of Sustainability” for their successful portfolio of “green” urban developments. 20,000 Euros of the prize money was used to install a photovoltaic system in the “Union Quarter”. The revenues it produces are used to promote ecological, social and cultural activities in the neighbourhood. This simultaneously strengthens the structures which have been carefully, yet sustainably, developed in the neighbourhood. The Spar- und Bauverein eG on Adlerstraße kindly allowed their roof to be used for the installation. Dortmunder Energie- und Wasserversorgung GmbH (DEW21), the city’s utilities company and cooperation partner, has generously agreed to run and maintain the system free of charge for a grand total of 20 years. The profits (approx. 1,000 Euros/year) are managed by neighbourhood cooperative InWest eG and reinvested in projects involving citizen participation. The photovoltaic system is a visible sign of climate protection. The 46-square metre system means 3,2 tons of carbon dioxide do not make their way into the atmosphere each year.

Without the support and commitment of so many different stakeholders and civil society, climate protection and energy efficiency projects like this one are bound to fail. The Energy Efficient District – Union Quarter, the first of its kind in Germany, shows how energy-oriented refurbishments to existing buildings can upgrade a whole area. Private households save electricity, small businesses safeguard their livelihoods and the environment says a big “Thank you!”

From 2010 to 2015, pilot projects, activities and campaigns have had long term impacts on shaping the whole quarter. The key to success was the enthusiasm and participation of the citizens. The idea of installing a photovoltaic system for the Union Quarter emerged in the context of the urban redevelopment project “Energy Efficient District – Union Quarter”. The Environment Office and Office for Housing and Urban Renewal accompanied the implementation of this ambitious project.

The photovoltaic system for the Union Quarter was installed on the roof of an apartment building, Adlerstraße 56. The view from the skylight into the beautifully cared for backyard belonging to the Spar- und Bauverein is not usually possible: a grid stops pigeons getting through the opening.





It is monuments such as the memorial in the Bittermark which remind us to work for peace, tolerance and humanity.

This sees Dortmund committing itself to the fundamentally important principles of human coexistence which are now as urgent and significant as ever.



WOLFGANG ASSHOFF  
OFFICIAL CITY REPRESENTATIVE  
FOR THE BITTERMARK



Inseparably linked with the people of this town, with its inimitable manner and the great diversity in almost 100 different quarters. Wonderful!

DIRK RUTENHOFER, CHAIR OF THE CITYRING AND IN 2005  
THE FIRST WINNER OF THE DORTMUND BUSINESS PRIZE  
WECKBACHER GMBH, SECURITY TECHNOLOGY



Dortmund has so many different faces, and I need them all. Countryside, infrastructure, hectic, peace and quiet, friends, total diversity.

FRANK BUSEMANN,  
FORMER MULTI-DISCIPLINE SPORTSMAN,  
NOW CORPORATE COACH



ONE CITY.  
HIGH QUALITY OF LIFE.

# ONE CITY.

MORE THAN HALF OF DORTMUND IS GREEN. | THE PATH ROUND THE PHOENIX LAKE IS 3.2 KILOMETRES LONG AND ONE OF THE LATEST AND LARGEST ATTRACTIONS IN THE REGION. | WITH THE KREUZ-, KLINIK-, KAISERSTRASSEN- AND SAARLAND-STRASSEN-QUARTERS, THE CITY PROVIDES LIVELY AND TRENDY QUARTERS FOR STUDENTS AND FAMILIES. | LIVING AND GOING OUT GET A WHOLE NEW MEANING IN AND AROUND THE DORTMUNDER U. | DORTMUND FOSTERS MOBILITY AND PUBLIC TRANSPORT FOR ITS CITIZENS WITH 440 NEW BICYCLE PARKING SPACES AND TEN CHARGER STATIONS FOR BIKES AND PEDELECS AT THE MAIN RAILWAY STATION. | THE WESTFALENPARK WAS GERMANY'S FIRST PARK OF THIS SIZE TO HAVE PUBLIC WIFI. UP TO 4,000 PEOPLE CAN USE MOBILE INTERNET THROUGHOUT THE WHOLE PARK AT ANY TIME. | DORTMUND HAS THE LARGEST NATIVE AMERICAN TENT IN THE WORLD: THE BIG TIPI. | DORTMUND'S 12 SENIOR CITIZEN OFFICES COOPERATE WITH MORE THAN 500 NETWORK PARTNERS THROUGHOUT THE CITY TO PROVIDE AND SET UP SUITABLE HELP FOR SENIOR CITIZENS QUICKLY. **THE NORDWÄRTS PROJECT IS BRINGING**

**DORTMUND'S UNEXPECTED TREASURES TO LIGHT.** | THE FAMILY PROJECT HAS OFFICES IN ALL 12 DORTMUND DISTRICTS TO ACCOMPANY FAMILIES FROM WHEN CHILDREN ARE BORN UNTIL THEY START WORK. | THE 800 M<sup>2</sup> SKATE PARK IN THE DIETRICH-KEUNING HAUS IS A UNIQUE INDOOR FACILITY IN THE REGION. | SINCE 2009, THE SENIOR CITIZENS' DANCE THEATER AT THE DORTMUND BALLET HAS PROMOTED AND DEVELOPED CREATIVE EXPRESSION FOR SENIOR CITIZENS. | SINCE 2016 DORTMUND HAS BEEN LOOKING INTO THE IMPACTS OF AN AGING SOCIETY IN A DEMOGRAPHY WORKSHOP AND IT IS THUS A MODEL MUNICIPALITY IN THE STATE.





# RETRO-TECHNOLOGY IN THE BINARIUM

## GERMAN MUSEUM OF DIGITAL CULTURE



The Ruhr Region has just added another museum to its list of attractions. With its more than 700 exhibits, the BINARIUM in Dortmund-Huckarde is one of the largest private collections of its kind. Computers and consoles have undergone remarkable developments over the last few decades. On two floors, the BINARIUM tells the story of these devices from the beginnings to the present day. Exciting game consoles from Atari 2600, NES and Dreamcast to the more recent consoles like PlayStation 4 or Xbox One invite you to join in and play. You can even take part in a car race in a converted cart. The personal computers include classics such as Apple II, C64 or Amiga, as well the latest high performance PCs, smartphones and tablets. The exhibition is complemented by lots of accessories, electronic

toys, displays, background information and old advertising. The BINARIUM also calls itself the "German Museum of Digital Culture. The exhibits are embedded in their historical context and are always related to the present. So, for anyone who wants to hand over their historic home computers, games consoles, games/software, literature, advertising or other relevant artefacts from the past, the museum will be pleased to hear from you.





One of the latest vehicles from Dortmund.: The eleMMent viva, a bus with a futuristic design which is used as a shuttle.

# MM GROUP SALES & MARKETING

## HIDDEN CHAMPION FOR MOBILE COMMUNICATIONS SOLUTIONS



With customers like Samsung, Intel and Deutsche Telekom at locations anywhere from Siberia to California, the mm Group Sales & Marketing GmbH, based in Dortmund-Dorstfeld, has been renowned for its top level mobile communications solutions for more than ten years now.

Marketing campaigns for customers from a wide range of sectors are not only planned in Dortmund, but are also coordinated from the company's offices here and then implemented around the world. Among other things, customers can select the exclusive "eleMMent" vehicles based on the well-known Colani Design. These are built in the company's Dortmund factory and attract attention wherever they go. The innovative 3.5-ton trailer "mm Lite" developed at mm has already earned it much praise from customers and is also produced in Dortmund. The Marketing Club (MC) has also noticed this hidden champion in Dortmund. And that's why the team around company founder and managing director Mario Marchi was awarded the MC Dortmund Ideas Prize for what the jury described as their "outstanding concepts" in the year 2016.



At work for Yamaha: an "mm Lite" from "mm". This ten-metre-long multifunctional trailer for cars provides over 25 m<sup>2</sup> of usable space.



# OLD HARBOUR OFFICE: COG SAILS ACROSS MOSAIC FLOOR

Have you been up north recently? To the north of the city? The Old Harbour Office is a good place to start. This landmark with its 38-metre-tall tower is one of the few public buildings in Dortmund left over from the Wilhelmine Period. It was built in 1898 in the neo-renaissance style in Dortmund's newly built harbour according to plans by architect and municipal buildings inspector Friedrich Kullrich. Until 1962, it was used by the harbour authorities, today this heritage protected building, complete with original fittings in the Emperor's Room, is home to Dortmund's harbour police. In the entrance hall of the building there is a mosaic floor depicting a medieval cog-built merchant ship in full sail. On the sail you see the Dortmund eagle and at the top of the mast the city's red and white pennant. Not many people know that at the end of the 19th century, Dortmund was not only big in coal, beer and steel, it was also well-known for producing mosaic floors of the highest quality. The "Dortmunder Thonmosaik" brand was established by architect and entrepreneur Rudolf Leistner (1848 – 1926). His customers were not just from the Dortmund area, many of his commissions took him to Berlin (including the Kaiser Wilhelm Memorial Church and the National Kaiser Wilhelm Monument on the Schlossfreiheit), where he was even able to hold his own in competition with local top dogs Puhl & Wagner, who were "Purveyors to the Emperor and the King".

The Cog Mosaic. Much of the work by Leistner was destroyed during the Second World War. Most of what survived the war years fell victim to renovation work in the 50s and 60s, so very few original Leistner mosaics remain today.





# DORTMUND DICTIONARY

## DORTMUNDISH – ENGLISH: FROM A FOR ABDACKELN TO Z FOR ZAPPENDUSTER.

### A

**abdackeln**, leave without achieving anything  
**abgezockt**, canny, cool, ripped off  
**abnippeln**, pop your clogs, die  
**Absacker**, night cap, one for the road  
**Ambach**, Whatever next?  
**Armleuchter**, candelabra, idiot, a--hole  
**Apparillo**, thingy, big machine  
**Appelkitsche**, apple core  
**Asitoaster**, chav-toaster, sunbed

### B

**baselig**, absent-minded, scatty  
**bedröppelt**, sad/let down  
**beömmeln**, laugh, guffaw  
**betuppen**, con, cheat  
**Blagen**, brats, kids  
**bräsich**, tipsy, indignant  
**Bömsken**, boiled sweets  
**Borsigplatz**, the birthplace of BVB  
**bolzen**, kick a ball about, play football  
**brutscheln**, fry, cook  
**Brimborium**, spectacle  
**Bütterken**, sarny, sandwich  
**Buchse**, kegs, trousers, pants  
**BVB**, probably the most loved club

### C

**Cymczyk**, surname for Tom, Dick or Harry

### D

**dat**, the/that  
**Doatmunda**, person from Dortmund  
**Dönekes**, funny stories  
**Donnerlüttchen**, Gordon Bennett, expression of surprise  
**dröppeln**, drip  
**durchfrickeln**, getting by, keep your head above water

### E

**Ette**, girl, lass

**Eumel**, friendly fool

### F

**Fiesematenten**, nonsense, messing around  
**Firlefanzt**, fuss  
**Fissel**, offcuts of material  
**Flitsche**, mop  
**flitzen**, whiz, run fast  
**Flötentöne beibringen**, teach s.o. respect  
**frickeln**, repair, fix up  
**Fummel**, glad rags, skimpy clothes  
**Furzknoten**, (knotted fart) small person

### G

**Galoschen**, shoes, slippers  
**gebongt**, agreed!, okey-dokey  
**Gedönse**, hot air, cacophony

### H

**Hacke** (verdammte), a curse, darn and blast  
**hackevoll**, plastered, very drunk  
**Häppken**, nibbles, finger food  
**Heiopei**, unreliable person  
**herumjuckeln**, waste time messing around  
**Hippe**, tall, slim girl  
**hömma**, listen willya  
**Hümmelken**, small knife

### I

**Ihmchen**, thingy, whatshisname?  
**ipsich**, cute, sweet

### J

**Jau**, yo, yes  
**Jäuster**, cheeky boy

### K

**Kabuff**, cubbyhole, small room  
**Kaline**, daughter, girlfriend, bride  
**Kawenzmann**, s.th. huge, whopper  
**kebbeln**, argue, rough and tumble  
**Kerr, Kerr**, exclamation, Oh boy,

oh boy!

**kiebig**, bitchy, angry  
**kloppen**, fight, scrap  
**Kloppo**, the one and only football coach  
**Knifte**, butty, sandwich  
**kodderich**, sick, ready to throw up  
**Kopp**, head, bonce  
**kumma**, look at that, look here  
**komma bei mich bei**, come here to me  
**Kumpel**, miners call each other this, mate, pal

### M

**Mottek**, hammer  
**muckelich**, cosy and warm  
**Muffensausen**, afraid, the heebie-jeebies  
**Mummpitz**, stuff and nonsense

### N

**nölen**, complain, moan

### O

**Obermacker**, gaffer, the boss  
**ölen**, sweat  
**Olle**, her indoors, the wife  
**Omma**, grandma  
**Ömmes**, big'un, large object, friend/husband

### P

**pampich**, stroppy, cheeky  
**Pellemänner**, boiled potatoes  
**picheln**, get pickled, get drunk  
**pille-palle**, easy-peasy  
**Pimpnellen**, lose patience  
**plästern**, pour down with rain  
**poofen**, nap, sleep  
**Pott**, the Ruhr Region  
**Puschen**, slippers

### Q

**Quanten**, feet  
**quarzen**, smoke a lot  
**Quasselstrippe**, chatterbox

### R

**Racker**, scamp, small child  
**Ratzefummel**, eraser  
**rubbeldikatz**, fast, "just like that"  
**rumklamüsern**, fiddle around

### S

**Schaluppi**, rascal, crook  
**scharwenzeln**, to butter someone up, smooth talking  
**schäbbich**, shabby/bad  
**Schisselameng**, useless rubbish  
**Schmuh**, nonsense, cheat  
**Schussel**, scatterbrain  
**schwatzgelb**, BVB colours  
**schwofen**, dance  
**Spökskes**, fool around

### T

**Tach zusammen**, greeting (Good day everyone)  
**Tinnef**, nonsense, useless stuff  
**Trallafitti**, party/fun

### U

**Unnerbuchse**, underpants  
**usselich**, not cosy, unpleasant

### V

**verdorri**, dammit, angry expression  
**verdummdeuveln**, take the Mickey  
**verfransen**, driven completely the wrong way

### W

**Wat haste?** What's up?  
**wonnich**, certainly not  
**wurschteln**, muddle (your way through)

### Z

**Zachel**, knife  
**zamma**, show me/us  
**Zappelbude**, disco  
**Zappenduster**, pitch dark, hopeless!



ONE CITY.  
LOTS OF CULTURE.

# ONE CITY. LOTS OF CULTURE.

THE KONZERTHAUS DORTMUND IS INCLUDED IN THE ECHO LIST OF THE 21 MOST OUTSTANDING EUROPEAN CONCERT HALLS AND IS THE ONLY CLASSICAL CONCERT HALL TO OFFER POP-CONCERT SUBSCRIPTIONS AS WELL. | MUSICIANS SEE THE WESTFALENHALLE AS “THE BEST PLACE IN THE WORLD TO CELEBRATE MUSIC”. | MAYDAY IN THE WESTFALENHALLEN WITH ITS MORE THAN 25,000 VISITORS EACH YEAR IS ONE OF THE BIGGEST INDOOR RAVES IN GERMANY. | ACCORDING TO THE NEW YORK JAZZ MAGAZINE DOWNBEAT, THE DOMICIL IS ONE OF THE “100 BEST JAZZ CLUBS” IN THE WORLD. | WITH CHOREOGRAPHER XIN PENG WANG, DORTMUND’S BALLET NOW RANKS AMONG THE WORLD’S BEST. | EVERY YEAR THE JUICY BEATS FESTIVAL TRANSFORMS THE WESTFALENPARK DORTMUND INTO A GIGANTIC FESTIVAL SITE FOR POP, RAP, ELECTRO, INDIE, ALTERNATIVE, REGGAE AND URBAN BEATS – THE LAST ONE HAD 50,000 VISITORS. **DORTMUND THEATER IS ONE OF THE**

**LARGEST THEATRE CENTRES IN GERMANY.** | THE FZW IN THE UNION QUARTER IS, IN ADDITION TO THE MOLOTOV IN HAMBURG AND THE BERGHAIN IN BERLIN, RECOGNIZED AS ONE OF THE BEST THREE IN THE REPUBLIC | WITH 130 ARTISTS ON 110 DAYS FROM THE END OF JUNE TO THE MIDDLE OF OCTOBER, RUHRHOCHDEUTSCH IS THE COMEDY AND CABARET SCENE’S LARGEST FESTIVAL IN GERMANY. | STUDENTS GET FLATRATE CULTURE TICKET TO SEE OPERA AND THEATRE EVENTS FOR FREE. | FOR 30 YEARS THE THEATRE AND THE SCHOOL’S OFFICE HAVE BEEN COOPERATING IN THE “SCHOOL IN THE OPERA HOUSE” PROJECT. SINCE 1987 AROUND 110,000 SCHOOL PUPILS HAVE TAKEN PART. | THE CITY AND STATE LIBRARY IS GERMANY’S LEADING PROVIDER OF TRAINING FOR (ONLINE-) LITERATURE-RESEARCH.





WE CAN DO THEATRE.  
FIVE BRANCHES – GREAT COMPANY!

## BALLET

Signing world stars Lucia Lacarra and Marlon Dino for the Faust II ballet production by Xin Peng Wang was spectacular news and a stroke of luck for Dortmund: "The picture-perfect prima ballerina assoluta danced, glided and floated across the stage in her golden Helena tunic with so much style, technique and magical charisma, something we normally only get to experience in New York, Petersburg, Paris or Tokyo. And Marlon Dino, a danseur noble is the ideal prince and pas-de-deux partner for Lucia Lacarra, he is a dancer with classic lines and apollonian body", wrote one critic after the premiere.

## OPERA

A new Director of Opera will be coming to Theater Dortmund at the beginning of the 2018/19 season. Jens-Daniel Herzog's successor will be Heribert Germeshausen. Director of Opera at the Theater and Orchestra Heidelberg and Artistic Director of the Baroque Festival "Winter in Schwetzingen", he began his theatre career as a music theatre dramaturg in 2004 at the Theater Koblenz and at the Salzburger Festspiele. In the 2014/15 season the opera at the Heidelberger Theater was awarded with the "German Theatre and Media Publishers Prize 2014" for the "most exciting and innovative repertoire of the season".



## THEATRE

The Schauspiel Dortmund has turned its prize-winning "Borderline Prozession" into a virtual reality experience: now, in "The Memories of Borderline", viewers can use an HTC VIVE-headset, to wander through the giant, virtual stage set and experience new stories, get new impressions and see things from new perspectives. The Schauspiel Dortmund worked together with the media artists from CyberRäuber on this project for the first time.

"Borderline Prozession" was one of ten productions invited to the prestigious Berlin Theatertreffen in May 2017: "A music, art, theatre and film installation: philosophical total theatre. Kay Voges surveys and depicts today's world as frenzied image-spitting machinery, sounding out its impacts on modern states of consciousness." (the jury's reasoning)

Have a look at the virtual world of "The Memories of Borderline" online at: [www.vimeo.com/206494211](http://www.vimeo.com/206494211).



## CHILDREN'S AND YOUTH THEATRE (KJT)

The Children's and Youth Theatre Dortmund was founded back in 1953, making it Dortmund's oldest theatre for young audiences. The KJT also commissions works which truly reflect the spirit of the times: "Scenes in the penalty area" – a piece which evolved in cooperation with the "Leuchte auf" BVB Trust – is all about the positive connotations, dreams, yearnings, and the team spirit which millions of people associate with football. Author Jörg Menke-Peitzmeyer doesn't ignore the dangers of this mass phenomenon and looks into its depths as well: right wing extremism, racism – on the pitch and in the stands – and violent behaviour are all investigated as well. A piece about football could hardly be more on the ball.

## DORTMUND PHILHARMONIC

If you look up the Dortmund Philharmonic on Wikipedia, you won't find much. But if you listen in to the city of Dortmund, you will experience it a lot. In the 2016/17 season the orchestra was to be heard at an event on average every one-and-a-half days. Since it was founded in 1887, the Dortmund Philharmonic, currently with 95 musicians, has earned itself an excellent reputation in North-Rhine Westphalia and beyond. This is proven by guest performances in Milan, Graz and Amsterdam as well as in the increasing audience numbers at their home ground – the Konzerthaus Dortmund. But, no pain, no gain, as they say. Their dedication has soared to new heights, above all, under the leadership of General Music Director Gabriel Feltz: The Dortmund Philharmonic have played at a total of around 250 performances in the 2016/2017 season – including for opera, musicals, ballet, concerts and even at visits to schools and kindergartens. And there were 275 rehearsals as well. There were around 90 concert events alone – philharmonic concerts, Viennese classics, chamber concerts, New Year's concerts, concerts for young people, family concerts, floor cushion concerts, a silent film concert, orchestra workshops, school and kindergarten visits, guest performances and many more.





The team at "mitten.drin" is constantly changing, because more volunteers join in all the time.

# WISHGRANTER & FAIRWANDLER

## NIKLAS RUDOLPH IS RIGHT IN THE MIDDLE OF IT

In 2016, the Karl Kübel Stiftung for children and families awarded the first nationwide FAIRWANDLER prize for young people who are involved in political development.

One of them is Niklas Rudolph. This Dortmund resident received the grant of 2,500 Euros together with his prize in the journalism/artistic commitment category for the project "mitten.drin", an online magazine published by 40 young people who have experience working abroad. "It shows modern, up-to-date options for getting involved in Germany and motivates others to emulate them", says the jury.

### WHAT DOES MITTEN.DRIN" DO?

On [www.freiwilligenmagazin.de](http://www.freiwilligenmagazin.de) online reporters write about people and projects which want to change society and from which everyone can gain something: an idea, a method, a vision. They supply contacts and background material. "We write about projects in German-speaking countries and about how people who have returned from voluntary work abroad continue to be involved in such work. Our focus is on topics like political development, education work, global learning, fair trade, economic and ecological sustainability, climate protection and social equality", one of the members of staff reports.

## WHO MAKES MITTEN.DRIN?

The idea for mitten.drin emerged at the undjetzt?!-Konferenz 2012, an annual meeting for people returning from voluntary work abroad. But everyone can take part!

## WHO IS NIKLAS RUDOLPH?

Trained as a story-teller, he studied music journalism at the TU Dortmund with Holger Noltze, Michael Stegemann and Christian Vorbeck (Organ).

Radio stories on WDR 3, SR 2, BR Klassik and DRadio Kultur.

Wishgranter and music mixer at NDR Kultur. Music stories and regular concert introductions in the Elbphilharmonic, the Köln Philharmonic, Gütersloh and Bielefeld.

Publisher and chairperson at mitten.drin | freiwilligenmagazin.de.

He reports about people who want to use their projects to change society.

He is familiar with almost all the organs between Cape Town and Rio de Janeiro. Supports a new organ in Lüdenscheid which should be ready in 2018.

Awarded a grant by the Evangelischen Studienwerks Villigst, the Robert-Bosch-Stiftung in the Freiwilligenkolleg der Akademie für Ehrenamt (2013/14) of the European Commission and the Dutch Minister of Foreign Affairs in the "Beyond your World" funding programme for up and coming journalists (2014). Started playing organ in a punk band, then played in Brazil in superstar Luan Santana's band. But



Niklas Rudolph: from the North Sea coast. Can still understand the local dialect - Plattdeutsch, but has to stick to platitudes.

they were both still going to school together in those days.

Voluntary service in Mozambique, film maker in South Africa. Until today, still working with Névoas do Deserto, the only hard-soft-rock-band between Maputo and Johannesburg.

### MEET UP WITH NIKLAS?

[fb.com/niklas.rudolph](https://fb.com/niklas.rudolph)

[twitter.com/theorganicer](https://twitter.com/theorganicer)

[Niklas.Rudolph@freiwilligenmagazin.de](mailto:Niklas.Rudolph@freiwilligenmagazin.de)



# THE CULTURAL LEGACY OF THIS CITY

## FIRST HAND MUSEUM RECOMMENDATIONS



DR. HEINRICH TAPPE



RÜDIGER WULF



DR. DR. ELKE MÖLLMANN



DR. ANNE KUGLER-MÜHLHOFER



MICHAEL DÜCKERSHOFF



DR. JENS STÖCKER



GREGOR ISENBORT

Imagine a place where work turns into an unforgettable experience! Dortmund's DASA Working World exhibition is the only one of its kind in the world. Nowhere else is there such a surprising establishment dedicated entirely to the meaning of work – for everyone. Covering an area the size of one and a half football fields, interactive displays and activities show how jobs and workplaces can be designed with people's interests in mind. Within the ranks of Dortmund's great cultural and educational establishments, DASA is certainly an exceptional attraction. Very close and very accessible. ”

GREGOR ISENBORT  
HEAD OF THE DASA WORKING WORLD EXHIBITION



If they have some time to spare, I'd love to take visitors into the Nordstadt part of the city where symbols of its love for BVB are everywhere to be seen, with its multicultural liveliness and attractive early 20th century architecture. The route would definitely take us along Steigerstraße where the Brewery Museum reminds us of Dortmund's proud past as the "Beer City" and where you can experience the impressive technology and logistics of a large modern brewery at the Dortmund Actien-Brauerei. We would then go on to enjoy quenching our thirst at a beer tasting in one of the most beautiful historic brewhouses in the country. ”

DR. HEINRICH TAPPE  
DIRECTOR OF THE BREWERY MUSEUM DORTMUND

I would recommend the Museum for Natural History to anyone interested in nature and the environment. When the building refurbishments and the modernization of the exhibition have been completed it will be a fascinating place for all the family to visit. Here, in the only natural history museum in the Ruhr Region, visitors go on a journey through the history of the world where they not only encounter mammoths from the Ice Age and dinosaurs from the Cretaceous Period, but they can also see the local flora and fauna presented in an easily understandable way within the context of their diverse relations to humankind. And if you want to find out more about the River Ruhr and the Möhnesee, the 90,000 litre aquarium provides an exciting and lively insight into the variety of life in the water. The Museum of Natural History is the perfect place for explorers both large and small. ”

DR. DR. ELKE MÖLLMANN  
MANAGER DORTMUNDER MUSEUMS AND DIRECTOR OF THE  
MUSEUM OF NATURAL HISTORY

The Hoesch-Museum is located in the former porter's lodge of the Westfalenhütte steel plant near Borsigplatz. The museum's permanent exhibition forms a link from the beginnings of the iron and steel industry in the Dortmund region in 1840/41 right through to the times of structural change in the present. The main focus is on the Hoesch company as the Westfalenhütte was one of their largest steelworks. Some of the remaining parts of the plant now belong to Thyssen-Krupp. A large number of former Hoesch workers helped to set up the museum and these dedicated volunteers ensure it still thrives today. ”

MICHAEL DÜCKERSHOFF  
DIRECTOR OF THE HOESCH-MUSEUM DORTMUND

When I am out and about I often find that it is the smaller museums where the most exciting discoveries are to be made. In Dortmund the Westphalian School Museum in Marten is just such a museum. Their motto is: School should not be boring – something that also applies to the 35 different public events which take place here in the School Museum every year. Something for everyone. ”

RÜDIGER WULF  
DIRECTOR OF THE WESTPHALIAN SCHOOL MUSEUM

Like no other place in Dortmund, the Zeche Zollern represents both the past and future of this lively city, which is always having to reinvent itself. This former "Sleeping Beauty Pit" tells us the story of mining, an industry which has all but disappeared now, and of the people who worked here until 1966. The museum forms a bridge to our Dortmund of the 21st century. It is upholding the beauty of industrial architecture for future generations and is also involved in the discussions about how Dortmund should develop by showcasing exhibitions, events and educational activities. For all visitors and event organisers we create a place with a feeling of "Heimat" or home. ”

DR. ANNE KUGLER-MÜHLHOFER  
MANAGING DIRECTOR ZECHES ZOLLERN

What are the tasks of a museum? To collect, conserve, research, exhibit, teach – and to surprise! The Museum for Art and Cultural History (MKK) has been doing this since 1883. It is the oldest museum of its kind in the Ruhr Region – and it has often reinvented itself. The greatest surprise is the building itself: from outside it is an elegantly sober Art Deco building, originally designed for the Sparkasse bank in 1924. Inside the generous rotunda with its grand glass dome is awe-inspiring – the former counter area of the bank is now the heart of the museum. In the MKK the visitors can stride through the different centuries and experience how people lived, worked and celebrated through the ages. The MKK tells the story of the City of Dortmund as it developed from a simple country village to an important centre of trade in the Middle Ages, it then covers the times of heavy industry to where we are today – a vibrant city of migration – a chapter we are still writing. In the MKK you can find paintings by Caspar David Friedrich as well as Bauhaus and Jugendstil art and design – and a real Roman hoard of gold as well. There are also lots of changing exhibitions to attract people to the museum. Come and be surprised! ”

DR. JENS STÖCKER  
DIRECTOR OF THE MUSEUM FOR ART AND CULTURAL HISTORY

# SCHATZKAMMER





## SOCIAL MEDIA WALK

# ALONG THE MUSEUM MILE

As part of the “Amazing Dortmund” campaign, the online-team at the Dortmund Agentur regularly invites bloggers to take part in surprising experiences. In March 2017, around 20 guests followed hashtag #smwDO17 to explore Dortmund’s Museum Mile which includes the Museum for Art and Cultural History, the German Football Museum and the Dortmunder U. The three museums opened up exclusively for the bloggers that evening. The outstanding finds in the museums included the Roman Hoard of Gold, exhibits covering Dortmund’s historic victory in the Champions League in 1997 and the special exhibition about Niki de Saint Phalle.

- This campaign received a grand total of around two million views, 40 percent of them from outside NRW.
- #smwDO17 was a trending topic in Germany and got a similar amount of media attention as the Pro7 programme “Germany’s Next Top Model” or the election of the President of the EU Council.
- The photo contributions received more than 250,000 views.







WE ARE A FESTIVAL CITY.

TAKE A LOOK AT DORTMUND'S LIVELY FESTIVAL SCENE

## JUICY BEATS

Juicy Beats in Dortmund's Westfalenpark is one of the most idyllic city festivals in Germany. Top acts for the 22nd festival for electronic and alternative pop music include Cro, Trailerpark, Bilderbuch, SDP, Bonez MC & RAF Camora, Alle Farben, Mighty Oaks, Fünf Sterne Deluxe, SSIO, Frittenbude, Moonbootica, OK Kid, Megaloh, Dat Adam and Faber. Thanks to the huge and beautiful festival site, a former Federal Garden Show location, there are also lots of opportunities for the 50,000 guests to chill out in the park away from the large stages. The festival is well known for its diverse line-up: from hip hop and electronic beats, indie pop and alternative rock to urban beats and songwriter folk, there are lots of smaller acts to discover as well. All in all more than 200 different bands and DJs from all over the world will be performing.



## KLANGVOKAL MUSIKFESTIVAL DORTMUND

The 9th KLANGVOKAL Musikfestival Dortmund in 2017 is honouring Europe as our homeland and uniting top class artists from 30 countries under the motto of HEIMAT EUROPA. The organisers have put together a programme of musical discoveries from Norway to Cyprus, from Great Britain to Russia. By choosing HEIMAT EUROPA as their concept, the KLANGVOKAL Musikfestival Dortmund is accompanying the latest discussions about Europe and enhancing them with some vocal gems from eight centuries of music.





## CITYRING-CONCERTS

Three days – three open air concerts – over 300 musicians: that is the successful formula for the 2nd series of Cityring Concerts. The Dortmunder Philharmonic is the city's orchestra and the city is its stage. In the largest open air concert hall in the region, opera lovers, musical fans and clubbers will all find what they are looking for. Together with soloists from Dortmund Opera and top class star guests, the Dortmunder Philharmonic orchestra will be showing just how diverse Dortmund's music is.

## DORTBUNT!

The DORTBUNT! city festival proves a point: we are a city of many faces. In the squares, on stages and at many other locations throughout the city, around 150 institutions, societies, associations, churches, trade unions, cultural workers, public administrations and many more will all be showcasing themselves and their work. If you go into the city centre at this time, you can really party and also experience what Dortmund is all about. Dortmund's great diversity is mirrored by DORTBUNT! This diversity is one of our city's strengths and it really shows what makes Dortmund so special.





## MICRO! FESTIVAL

This international festival for world music and street theatre with the lively feel of a Mediterranean piazza, combines a culturally sophisticated programme with the character of a city festival. It presents a fascinating insight into foreign countries and cultures. The quality and originality of the artists engaged by the City of Dortmund's Culture Office has ensured a steadily growing fan-community, who traditionally meet up at the festival as the NRW summer school holidays come to an end.



## INTERNATIONAL JAZZ MEETING

The history of the "Jazztage" in Dortmund began back in the year 1989 when the domicil was celebrating its 20th anniversary. Over the years, the event's cooperation partners and organisers have variously been the City of Dortmund Culture Office, the Society ProJazz e.V., the Signal Iduna Park and the domicil, in whose hands the Jazztage are today. The festival venues have changed over the years depending on the concept and expectations. In the year 2000 it was held in the Studio Cinema (Hansatheater) in Hansastraße. This was the first time the domicil got to know and play in what was later to become its permanent home. The musical spectrum ranges from modern jazz to world and experimental music, and from international stars to newcomers with potential.



# WWW.DORTMUND-ÜBERRASCHT-DICH.DE

## PUBLISHING DETAILS

### Issued by:

City of Dortmund, The Lord Mayor

### Concept:

Thomas Kampmann, Dortmund-Agentur

### In cooperation with:

Kathrin Aulke, Selina Ilter, Julia Kollmann, Gaye Suse Kromer, Ulrich Potthoff, Sören Spoo, Iris Wosny (all Dortmund-Agentur)

### Layout/technical implementation:

Kathrin Aulke

### Editorial office:

Dortmund-Agentur: Thomas Kampmann (responsible), Alexander Nähle, Michael Westerhoff, Zilla Medienagentur GmbH

### Photo credits:

Jürgen Appelhans – p. 18 (portrait top), Benito Barajas – main photo p. 19+61, Hans Blossy – main photo p. 69, Markus Bollen (Stiftung Industriedenkmalpflege und Geschichtskultur) – p. 13, Peter Brenneken – main photo p. 53, Ekkehart Busenius / Tanja Reinecke – p. 8 (bottom), Manoel Eisenbacher (freiwilligenmagazin.de) – p. 88+89, Nikolas Golsch (TU Dortmund) – p. 45–47, Roland Gorecki – p. 16, 48–49, 58, 90 (portrait 6), Rudolf Hasselblatt – p. 97 (top), Frank Heldt – p. 92, 93 (bottom), hollezim – p. 93 (top), Jürgen Huhn (TU Dortmund) – main photo p. 43, Dirk Jungholt – main photo p. 29, Lutz Kampert – p. 42 (portrait bottom), Thomas Kampmann – p. 11, 12, 27, 31–33, 50, 52, 55–57, 66, 74, 79, 81, 85, 86 (top left), 87 (top right), Bülent Kirschbaum – p. 95, Stefanie Kleemann – 76 (portrait top), 90 (portrait 1,2,3,4), Daniel Koch (Chokografie) – p. 28 (portrait top), Christian Lamker – main photo p. 9, Hans Jürgen Landes – p. 26, 87 (top left), Oskar Neubauer – aerial photo p. 24/25, Matthias Prüger (C+FA Jens Casper and FORMATION-A) – p. 21+23, Ricarda Mohr-Rich – p. 18 (portrait bottom), Frank Roesner (Deutsches Fußballmuseum) – p. 17, Marcel Schaar – p. 86 (top right), Stephan Schütze – p. 42 (portrait top), 96 (top), Caroline Seidel – p. 90 (portrait 8), Patrick Temme – p. 14, Sebastian Vollmert – p. 68 (portrait bottom), p. 73 (middle), Stefan Ziese – main photo p. 77, Borussia Dortmund – p. 52, GIVAUDAN – p. 51, Elmos Semiconductor AG – p. 64, JUICY BEATS – p. 94, kukune Mediendesign – p. 63+65, labor b | Image of the video installation “Unexpected Rules” by Frédéric Moser & Philippe Schwinger in the exhibition “History will repeat itself. Strategien des Reenactment in der zeitgenössischen (Medien-)Kunst und Performance” 09 June 2007–23 September 2007 in the Hartware MedienKunstVerein (HMKV) in the PHOENIX Halle Dortmund – p. 22, LWL Industriemuseum Zeche Zollern – p. 90 (portrait 5), mm Group Sales & Marketing – p. 80, Schamp & Schmalöer – p. 26, the kurland agency – p. 97 (bottom), Archiv Westfalenhallen Dortmund – main photo p. 83, WILO SE – p. 71–73, private

**Dortmunder U:** © Fliegende Bilder, A. Winkelmann, Dortmund

### Communication concept:

cP/COMPARTNER, Agentur für Kommunikation GmbH, Essen

**Proofreading:** Zilla Medienagentur GmbH

**Printer:** Dortmund-Agentur

**Further processing:** Blömeke Druck SRS GmbH, Herne

**Status:** 3rd Edition, May 2017