



# WordFinder Pro

# Foreword

The Internet has broken down many global barriers. It provides both the private and the corporate community with a whole new networking model. Language skills are now a lesser source for concern when it comes to international business and personal correspondence. WordFinder Pro helps you and your company to effortlessly communicate in different languages.

WordFinder Pro can, in a split second, display translations, phrases and synonyms required in your work. Enter the word to be translated in your word processor! Just one click then lets you find and translate the word in question. Double click to paste the translation into your document! It could not be easier.

WordFinder Pro, complete with accompanying dictionaries, offers users much more than standard printed dictionaries. As well as saving time and the greater level of flexibility, you can avail of the following advanced functions:

<b>User dictionaries</b>	Create user dictionaries with corporate-specific or branch-related terminology.
<b>Dictionary groups</b>	Carry out a search in several dictionaries by setting up dictionary groups.
<b>Entry search</b>	Search for a phrase or expression.
<b>Wild card search</b>	Carry out advanced searches for word segments using wild card characters (* or ?).
<b>Search in opposite language direction</b>	This function provides you with subtle graduations in a language. It allows you to search for a translation in a corresponding bilingual dictionary.
<b>Paste translations</b>	You can quickly and easily paste the translation into your document.
<b>Notes</b>	This option lets you create notes relating to WordFinder Pro dictionaries.
<b>Import dictionaries</b>	Convert your old dictionary databases into the WordFinder Pro format.

WordFinder Pro helps you to use contemporary words and expressions in your documentation. Our range contains more than 100 different dictionaries in 10 different languages that can be integrated with our software. WordFinder Pro runs in all types of Windows-based programs such as word processing, spreadsheet and email software.

By signing up for one of our very favourable licensing agreements, you will be guaranteed free software upgrades, unbeatable discount prices when buying software in the future and free technical support. An annual subscription fee is all that is needed to make sure you have the very latest version of our software installed on your computer.

Browse to our website for more details: [www.wordfinder.com](http://www.wordfinder.com).

# Contents

<b>INTRODUCTION</b>	<b>4</b>
Requirements:	4
Technical specifications	4
Help	4
If you require help	4
<b>HOW TO USE WORDFINDER PRO</b>	<b>5</b>
Start WordFinder Pro	5
Activate WordFinder Pro	5
Quit WordFinder Pro	5
The program window	6
Headword window	7
Entry window	7
Menus and toolbars	7
Select dictionary/dictionary group	9
Select a dictionary group	9
Search in WordFinder Pro	10
Direct search from other applications	10
Searching in WordFinder Pro	10
Searching on every key press	10
Searching using a wildcard or joker character	11
Entry search	11
Search in opposite language direction	12
Dictionary group search	12
Paste translations	13
Browse in headword or entry window	14
Changing language direction	14
Copy special	14
Spelling aid	15
Irregular verbs	16
Search among Pinyin/Cn characters (Simplified Chinese characters)	18
Some information about how the search function works	19
Limitations	19
<b>CONFIGURE WORDFINDER PRO</b>	<b>20</b>
Configuration	20
Start up/Activation	20
Functions	21
Effects	22
Entry display	22
Language	24
Change password	24
Dictionaries	24
Company notes	24

<b>DICTIONARY MANAGEMENT</b>	<b>25</b>
Shortcut commands	25
Dictionaries	25
Groups	26
File paths to dictionaries	27
Dictionary groups	28
Create a dictionary group	28
Modify a dictionary group	29
Remove a dictionary group	29
User dictionaries	30
New dictionary	30
Import dictionaries	32
Control codes for importing dictionaries into WordFinder Pro	33
Text formatting control codes	33
Changing fonts	35
Export dictionaries	35
Reorganise a dictionary	36
Delete dictionaries	36
Add Words	37
Batch-add words	38
Enter words directly	39
Import an Excel file	40
Edit Words	41
Edit entry content on the fly	41
Delete Words	41
Templates	42
Create a template	42
Edit a template	46
Delete a template	47
Export a template	47
Import a template	47
Create a note	48
Read note	49
Edit note	49
Delete note	49
Glossary test	49
<b>SHORTCUT COMMANDS</b>	<b>51</b>

# Introduction

## Requirements:

We recommend that you read this manual prior to installation and when reviewing the functions provided in WordFinder Pro. This manual describes version 10.

A good understanding of Microsoft Windows is required to fully understand the contents of this manual.

## Technical specifications

WordFinder Pro requires:

- Windows XP or above.
- or
- Windows 2003 Server or above.
  - Disk with 8 MB free space for the program and 5-20 MB free space for each dictionary database.

## Help

The help section in WordFinder Pro contains all the details you require when administering the software.

Do as follows to start the help guide:

1. Select **Contents** from the **?** menu or press **F1** to open the help dialog window.

The **Contents** section provides support and troubleshooting. It also includes a link to WordFinder Software's website, software details and system information required when you contact our customer support staff. The terms of the software license are also outlined in this section.

### If you require help

If you need assistance on how to use Windows help, you can either select **How to use help** in WordFinder Pro's help menu or press **F1** when WordFinder Pro's help section is displayed.

# How to use WordFinder Pro

## Start WordFinder Pro

Once installation is complete, you can find the WordFinder Pro program group icon in the **Start** menu under **Program**, or among the apps in Windows 8.

The easiest way to start WordFinder Pro is to doubleclick on the WordFinder Pro icon on your desktop. If you want WordFinder Pro to start automatically each time you start Windows, you have to place the WordFinder Pro icon in **Autostart**.

## Activate WordFinder Pro

Once WordFinder Pro has been started, it can be activated at any time by a keyboard combination (hotkey) **Ctrl+Left Shift** or via the taskbar in Windows.

You can always change the hotkey setting under Tools | Preferences | Configuration. If the keyboard combination does not work, it is most likely in use by another active application. Reset the shortcut combination until you find one that is not in conflict with current hotkeys.

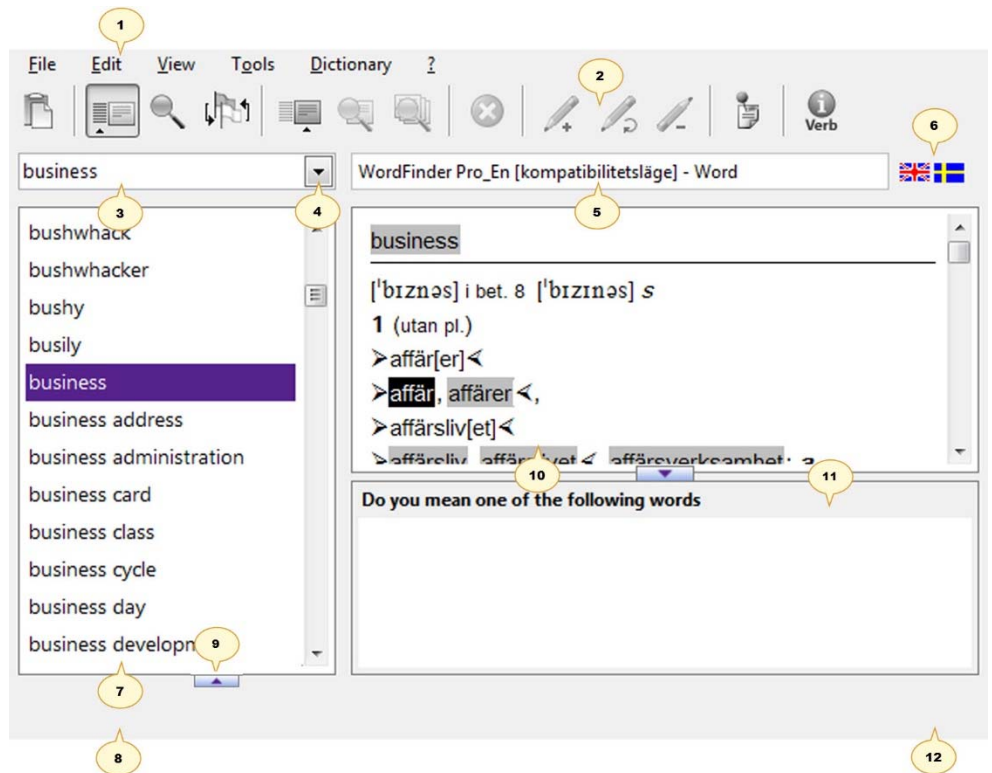
## Quit WordFinder Pro

WordFinder Pro can be closed in a number of ways:

- Select **Quit** from the **File** menu.
- Press **Alt+F4** when WordFinder Pro is activated.
- Click the close (x) button on the top right hand corner in the title bar.

## The program window

Here is an overview of the program window:



- 1 Menu bar.
- 2 Toolbar buttons.
- 3 Type your search word here.
- 4 Click here to see a list of previous search words.
- 5 The name of the active file and word processor is shown here.
- 6 Doubleclick here to alter language direction in dictionary/dictionary group.
- 7 Headword window: A list of words from a dictionary/dictionary group or a particular search list is displayed in this window.
- 8 Status bar. The name of the license holder for the dictionary may also be displayed here.
- 9 Search index window for searching Pinyin/Cn characters.
- 10 Entry window showing explanations/translations/synonyms.
- 11 Spelling aid window
- 12 Click on this icon to browse to WordFinder's website to see, for instance, if any software upgrades are available.

## Headword window

The headword window displays headwords from the activated dictionary or dictionary groups. If you have carried out a search for a headword, the exact word or the closest match will be highlighted in the list shown.

Please note that when you carry out a wildcard search or use the **Search in all entries** function (refer to *How to use WordFinder Pro*), the resulting headword list contains hits only. The list is empty, however, if the search does not find an entry.

## Entry window

The entry window displays translation entries for the headword highlighted in the headword window. The entry window displays explanations, translations, synonyms etc.

Any word that you would like to use in your document or file is pasted directly from the entry window. Pasteable words and phrases are highlighted.

### Tip!

User notes can be added to entries. Please refer to *Create a note* under *Dictionary Management*.

*How to use WordFinder Pro* explains how to carry out searches, paste entries etc.

For Swedish, English, Spanish, Danish and Norwegian, you can get help in spelling certain words, refer to the chapter *How to use Word Finder Pro*.

### NOTE!

You can quickly and easily paste a suitable translation from the entry window into your document, by pressing **Enter** or by doubleclicking. Refer to *Paste translations*.

## Menus and toolbars

The **File** menu contains the Minimise and Exit options.

The **Edit** menu contains the Copy, Copy special and Paste commands.

The **View** menu allows you to select which icons are shown in the toolbar. You can choose from Entry Search, User Word, Create a note and Writing Assistance.

The **Tools** menu offers various settings and functions. The Program settings menu contains a number of options that let you customise WordFinder Pro. Select the Dictionary Management menu if you wish to organise your dictionaries. User dictionary passwords and company notes can be modified using the Tools menu.

The **Dictionary** menu shows all accessible dictionaries and their corresponding hot-keys, **Ctrl+1** to **9**. The same display can also be obtained by using the right mouse button anywhere in the WordFinder Pro window. In this menu, you can also select any dictionary group you may have created.

The **?** menu offers help with the software whenever you need it.



A number of options are available in the toolbar.



The buttons are divided into different categories by narrow vertical lines. The first button lets you transfer any selections to your word processor. This is followed by the *Normal search* category with four buttons. The next category is *Entry search*, with three buttons. The red button cancels a search. The next category is *User word* with three buttons followed by the note creation button and the button for irregular verbs at the far right.

Below is a summary of the buttons and what they do:

No.	Name	Functionality:
1	Transfer selected word to active document	Paste selected word from WordFinder Pro into your word processor.
2	Search among headwords	Activate a search among headwords.
3	Search	Carry out a search for the word shown in or written into the entry field.
4	Continue search in opposite language direction.	Carry out a search in a language in any corresponding dictionary.
5	Search for word in entry window	Activate a search among entries.
6	Search in this entry	Carry out a search in the entry shown.
7	Search in all entries	Carry out a search among all entries in the active dictionary.
8	Cancel search	Cancel ongoing search.
9	Add Word	Add words to user dictionary.
10	Edit Word	Modify words in user dictionary.
11	Delete Words	Remove words from user dictionary.
12	Create a note	Create a note in the displayed entry.
13	Irregular verbs	Open the Irregular verbs window, if it is available (otherwise the button is not visible).

If you wish not to use a certain category, then you can remove it from the toolbar, by selecting this option under the View menu.

## Select dictionary/dictionary group

From the Dictionary menu, you can select a dictionary of your choice. Here you can also select any dictionary groups you may have created.

The menu is shown in the following screen shot:



Here you can see all the dictionaries installed, including any user dictionaries created, categorised according to different language combinations. The active dictionary is checked to the left of the dictionary name.

You can select another dictionary by clicking on its name or by using the defined hotkey.

### Select a dictionary group

Select a dictionary group using the Dictionary | Groups menu. Any groups you may have created are then displayed. Below is a screen shot of how this window may look:



Click on the dictionary group you wish to select.

The *Dictionary Management* section contains more information about dictionary groups.

## Search in WordFinder Pro

There are a number of search options available when translating content. Select a search option that suits your method of working.

### Direct search from other applications

You can search for a word directly from the application you are using, for example Microsoft Word.

1. Select the word you wish to translate.
2. Activate WordFinder Pro using the hotkey combination or click on the WordFinder Pro icon in the Windows task bar.

WordFinder Pro searches automatically through the headword index to finally display explanations, translations, synonyms etc in the entry window.

3. Paste in the desired word or phrase by double-clicking the word or phrase in question. Pasteable words and phrases are highlighted.



You can also select a word or phrase and press **Enter** or click on the **Transfer selected word to active document** button.

### Searching in WordFinder Pro

1. Activate WordFinder Pro and enter the word you wish to search for in the **Search** field.
2. Click **Enter**.

WordFinder Pro searches for the word to finally display explanations, translations, synonyms etc in the entry window.

3. Paste in the desired word or phrase by double-clicking the word or phrase in question. Pasteable words and phrases are highlighted.



You can also select a word or phrase and press **Enter** or click on the **Transfer selected word to active document** button.

### Searching on every key press

With this option activated, which is standard, words, similar to the headword and which are indexed according to the each letter typed into the **Search** box, are listed in the headword window. This is a very practical tool when you are, for instance, unsure of how a certain word is spelt.

This option can be activated and cancelled using the hotkey combination, **Ctrl+T**. You can also activate/deactivate this option as follows:

1. Activate WordFinder Pro and choose Tools | Program settings | Configuration.
2. Click on the **Functions** tab.
3. Check **Search on every key press** and click **OK**.

When this option is activated, it can be used as follows:

1. Enter the word you wish to search for in the **Search** field. WordFinder Pro searches for the word, one letter at a time, according to the order they are entered.
2. Click **Enter** when you are finished with the search.

### Searching using a wildcard or joker character

You can either enter the exact word to be searched for or use either \* or ? to represent a wildcard character. The \* character represents one or more real characters. The ? character represents any one character. In this way, you can e.g. search for:

- |         |   |
|---------|---|
| band*   | all words beginning with band                                   |
| *ready* | all words containing the character combination ready.           |
| *band   | all words ending in band  |
| b?ll    | all words with four letters starting with b and ending with ll. |

1. Enter the word you wish to search for using a wildcard in the **Search** field.
2. Press **Enter** or click on the **Search** button.

The program searches for the word and displays a list of headwords in the headword window. Here you can select the word you are looking for. Note that searching in this manner results in a hitlist with headwords only. The list is empty, however, if the search does not find an entry.



3. Select **Search among headwords** to return to the standard search mode.

### Entry search

This is useful when you wish to search for single words or complete phrases in the entry section of a dictionary. You can either search in one entry for a specific word or in all entries in the dictionary.

The following explains how to search *within a displayed entry*:



1. Enter a word or phrase in the **Search** field.



2. Click the **Search for word in entry window** button.

3. Click **Search in this entry** to carry out a search for the word/phrase in this entry.

If the word exists in the entry, all occurrences will be highlighted.



4. Select **Search among headwords** to return to the standard search mode.

The following explains how to search *in all entries*:



1. Enter a word or phrase in the **Search** field.



2. Click the **Search for word in entry window** button.

3. Click **Search in all entries** to carry out a search for the word/phrase in all entries.

The headword list is now revised to list all headwords that contain entries with the searched word/phrase.

4. Click on each headword to view the respective search results in the entry.



5. Select **Search among headwords** to return to the standard search mode.

### Search in opposite language direction

There is, at times, a requirement to carry out a search in a corresponding language in a bilingual dictionary in an attempt to define various intonations in a language.

1. Enter the word you wish to search for in the **Search** field and press **Enter**.

WordFinder Pro searches through the headword index to display words, translations, synonyms and phrases in the entry window. You can easily translate any word in the hitlist found in the corresponding dictionary.

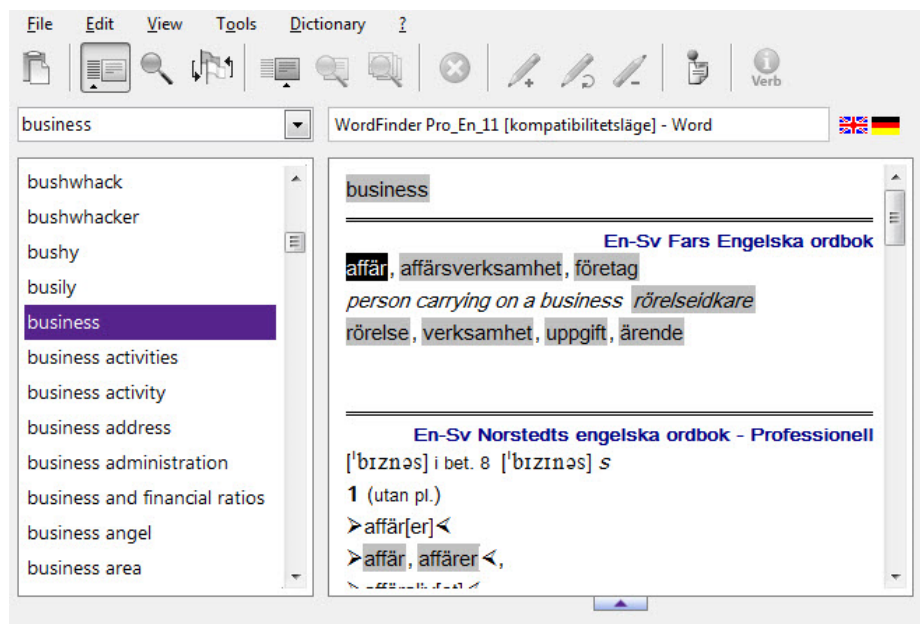


2. Place the cursor on the relevant word in the entry window and press the **Continue search in opposite language direction** button in the toolbar to translate it. By right clicking on a word, you can also carry out a search for its translation.
3. The translation of the word is now shown in the entry window in the corresponding dictionary. Click **Return** to close this window to return to the previous entry window.

### Dictionary group search

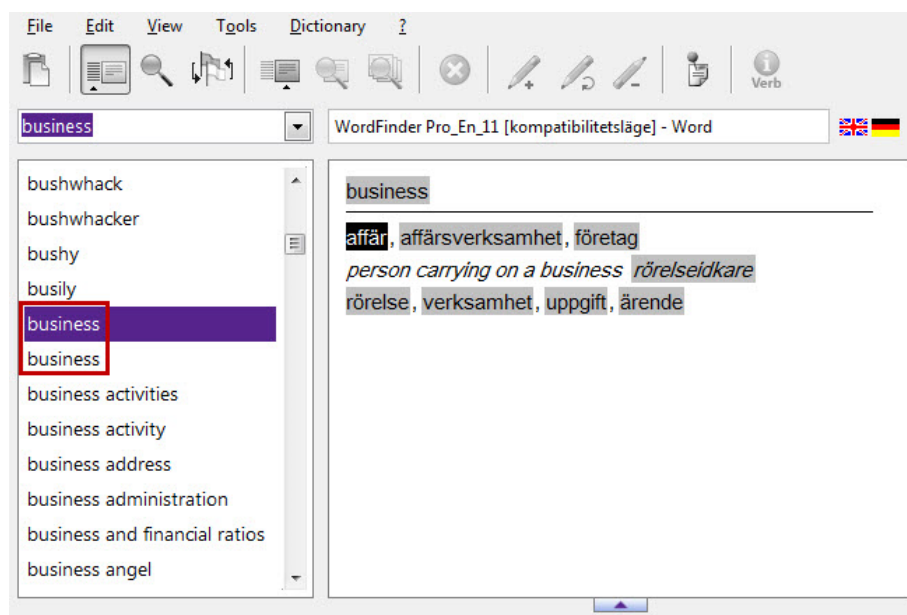
When you carry out a search in a dictionary group for a word or phrase, WordFinder Pro searches for the word or phrase in all the dictionaries in the group. The resulting search list contains the word or phrase you searched for.

With the default settings, the **Compress headwords in dictionary groups option** under Tools|Program settings|Configuration is active, which means the headword is displayed only once, instead of the exact number of times it appears in the various dictionaries. The entry window displays each occurrence of the headword from the grouped dictionaries it is indexed in.



If you change that setting, the number of hits corresponds to the number of times the word/phrase occurs in the dictionaries in your group. An explanation for each

occurrence of the word is displayed in the entry window if you scroll down the list of hits.



Refer to *Dictionary Management* on how to group dictionaries.

## Paste translations

You can quickly and easily paste a suitable translation from the entry window into your document. Do as follows:

1. Search for the required entry using a search option described above.

Highlighted words in the entry window can be pasted into your document as follows:

2. Click **Enter**.

You can browse the list of pasteable words/phrases in the entry window using the **Arrow right** and **Arrow left** keys. In this way, you can browse to the word or phrase you wish to paste and then press **Enter**.

You can also paste in a highlighted word or phrase of your choice as follows:

2. Doubleclick on the word or phrase.

The translation is pasted into your document. Any selected words in your document will be replaced by the pasted word. If you have not selected a word in your document, the translation will be inserted at the position of the cursor.

## Browse in headword or entry window

It is important that the correct area of the WordFinder Pro program window is active if you wish to browse in either the headword or entry window.

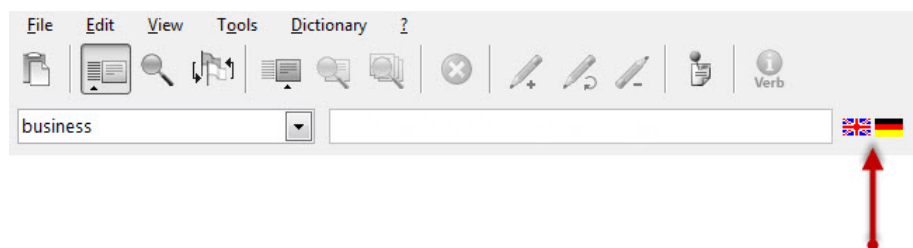
The **Search** field is active when you type in a word or phrase. In this case, you can only browse in the headword or entry window using the scrollbar.

When you enter the word or phrase and press **Enter**, the headword window becomes active and you can browse in this window and the entry window using the arrow keys. **Arrow up**, **Arrow down**, **Page Up** and **Page Down** in the headword window and **Arrow left** and **Arrow right** in the entry window.

If you use a scroll mouse, the headword window has to be first activated before you can scroll the list using the scroll wheel. When the cursor points at the headword window, you can use the scroll wheel to browse the list, whereas if the cursor points to the entry window, you can scroll here instead.

## Changing language direction

Current language direction settings are shown, at all times, in the program window. The flag icons to the right of the active file/program field indicate language direction. Below is a screen shot of how this window may look:



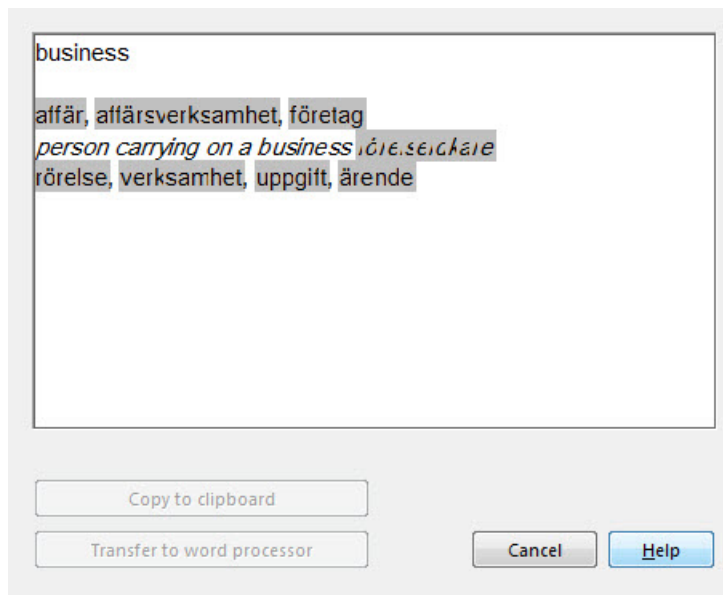
Change language direction, i.e. change to corresponding language in a bilingual dictionary by doubleclicking on the flags icon.

## Copy special

In certain cases, you may wish to copy more information than is normally the case when pasting from an entry. This is where the **Copy special** feature comes in handy. Do as follows:

1. Select the required headword.
2. Select Edit | Copy special.

The complete entry for this headword is now displayed in a new window, e.g.



3. Select the content you wish to copy.

**NOTE!**

You can only copy a maximum of 200 characters at a time. If you select more than 200 characters, a warning message highlighted in red will appear.

4. Click **Copy to clipboard** or **Transfer to word processor**.

If you copy the content to the clipboard, you can paste it into the document of your choice in any application. If you choose to transfer the content to your word processor, it will be pasted directly at the cursor in the active document in the background.

## Spelling aid

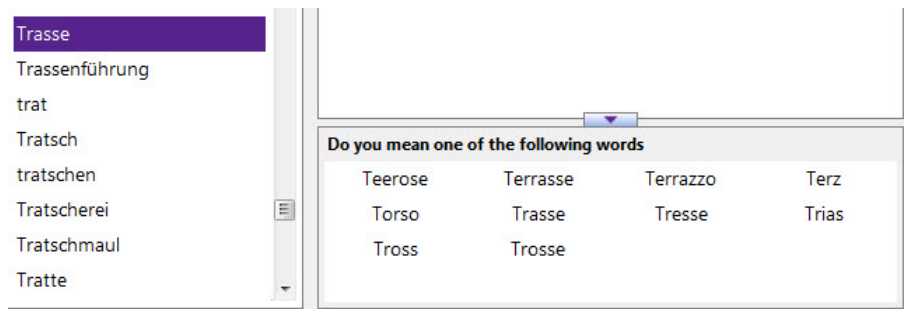
For Swedish, English, Spanish, Danish and Norwegian, you can get help in spelling certain words. This feature is designed to help you find the correct word even if the entry is not spelled correctly.

In the spelling aid window, you will find suggestions for words that sound the same as the search word and that are in the dictionary. You open and close the spelling aid window by clicking on the triangle at the bottom corner of the article window.



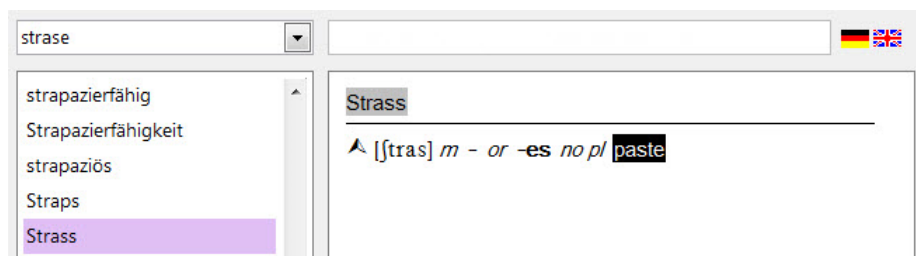
When the spelling aid window is open, it may look like this:



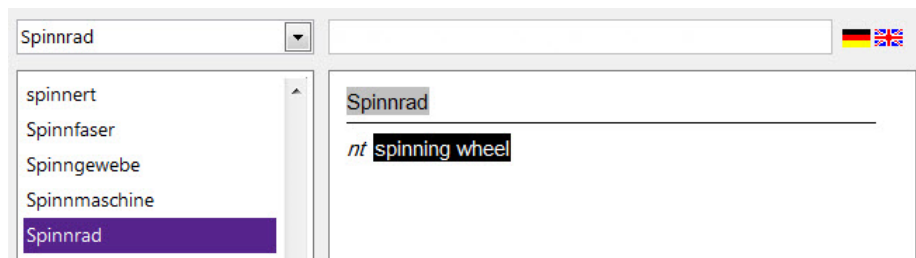


In the index window, the marking may have different hues depending on whether or not the search word matches it 100%. If you enter a word that is not in the dictionary, the next word in the dictionary is presented. This word is highlighted with a light purple colour to indicate that it is not a 100% match. If there is a 100% match, the colour is dark purple.

This is how it looks when a match *is not* 100%:



This is how it looks when a match is 100%:



## Irregular verbs

When the target language is Swedish, English, German, Italian, Spanish or French, conjugation tables are available for the most common irregular verbs. If a conjugation table is available, this icon is shown in the row of buttons:



You can use this function in two ways:

1. Click on the icon in the tool bar.

Now an empty conjugation table is displayed.

2. Click the drop-down arrow under **Search verb** at the bottom left and select a verb in the list.

Now a conjugation table for the verb is displayed.

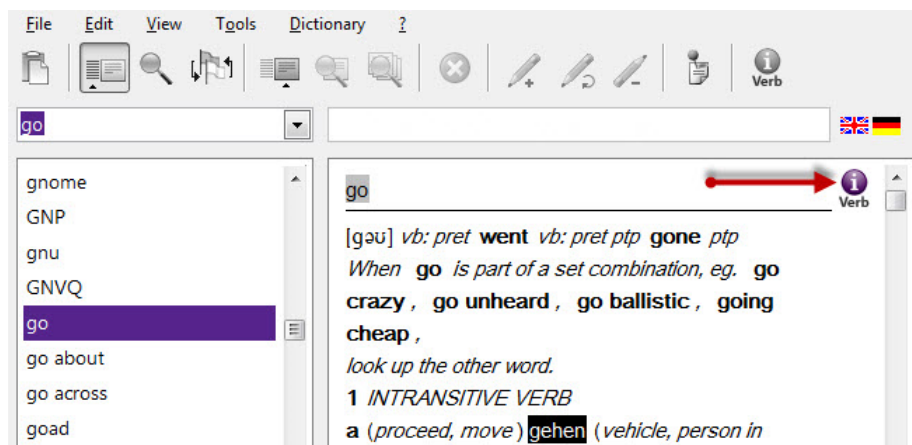
	Infinitiv	Präsens Indikativ	Präteritum Indikativ	Futur I indikativ	Futur I konjunktiv II	P
<b>Ich</b>	bleiben	bleibe	blieb	werde bleiben	würde bleiben	
<b>Du</b>	bleiben	bleibst	bliebst	wirst bleiben	würdest bleiben	
<b>Er/Sie/Es</b>	bleiben	bleibt	blieb	wird bleiben	würde bleiben	
<b>Wir</b>	bleiben	bleiben	blieben	werden bleiben	würden bleiben	
<b>Ihr</b>	bleiben	bleibt	bliebt	werdet bleiben	würdet bleiben	
<b>Sie</b>	bleiben	bleiben	blieben	werden bleiben	würden bleiben	

Search verbs (infinitive form or conjugated form)

Search      Reset      Paste      Cancel      Help

3. Click on the conjugated form you wish to use and click on **Paste**.

If you click on a word in the article window that has a conjugation table, an icon immediately appears in the article window. This is how it may look:



1. Click on the icon, and the conjugation window opens with conjugations for the selected irregular verb.

2. Click on the conjugated form you wish to use and click on **Paste**.

Regardless of how you open the conjugation window, you can search the dictionary's conjugation table. You can search all conjugated forms. Do as follows:

1. Enter the search word in the box under Verb search.

2. Click on **Search**.

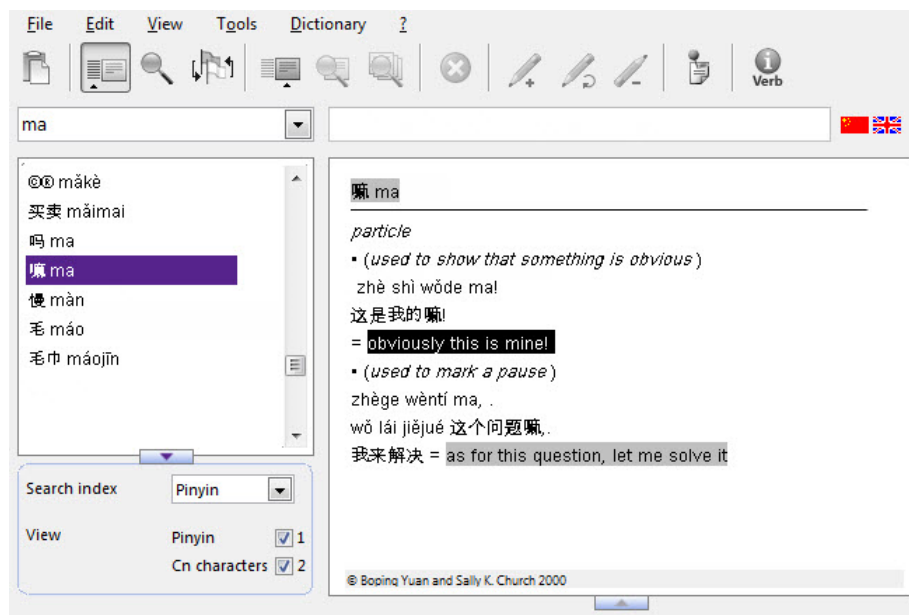
The conjugation table containing that word is displayed. If the search word is not listed in the conjugation table, the box will flash red.

3. Click on the conjugated form you wish to use and click on **Paste**.

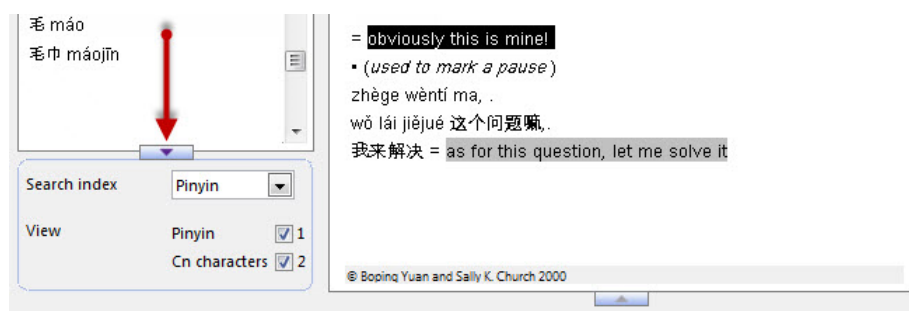
## Search among Pinyin/Cn characters (Simplified Chinese characters)

In WF10 you can work with dictionaries of Pinyin/Cn characters. When you have such a dictionary you can choose to display either Pinyin or Cn characters in the index window, or both at the same time.

When this type of dictionary is activated, the search index window is displayed where you can make this choice. This is how it may look:



You can close and open this window by clicking on the triangle.



How to use the search index window:

At **Search index**, select whether you wish to search among Pinyin or Cn characters. Check boxes appear during **Display**. If you want both character forms displayed in the index window, both boxes should be checked. If you only want one of them displayed, check its box and make sure the other box is not checked.

## Some information about how the search function works

Accents for the first and third tones are not available on Swedish or English keyboards. You cannot, for example, have two accents on the same letter.

Since it is difficult with a normal keyboard to enter pinyin words with "tone marks", the program checks via an internal table whether what has been entered can be Pinyin (ma, zhi, jing, yo, etc.) If so, the search is switched first to the Chinese-English direction and results in a wildcard search of, for example, **ma\*** where all pinyin (ma regardless of "tone marks") hits are displayed in the index list. The program also automatically switches to pinyin-sorting.

You should always divide each pinyin with a space, for example **m□ m□ hūhū** is written **ma ma hu hu**.

If you instead search for **map** (which is not included in the internal pinyin table), it is interpreted as an English word and then the program automatically switches to the English-Chinese direction.

Of course, you can search directly for pinyin words with "tone marks" or Cn characters if you enter them in the search field via hotkeys or the scrapbook. In both cases, the program automatically switches to the Chinese direction and to the respective sorting (pinyin or Cn characters). This search is done in the usual way without the wildcard technique.

## Limitations

When you work with dictionaries containing Pinyin/Cn characters or Japanese characters, there are some limitations in Word Finder. The following features are not available when using dictionaries with Chinese or Japanese:

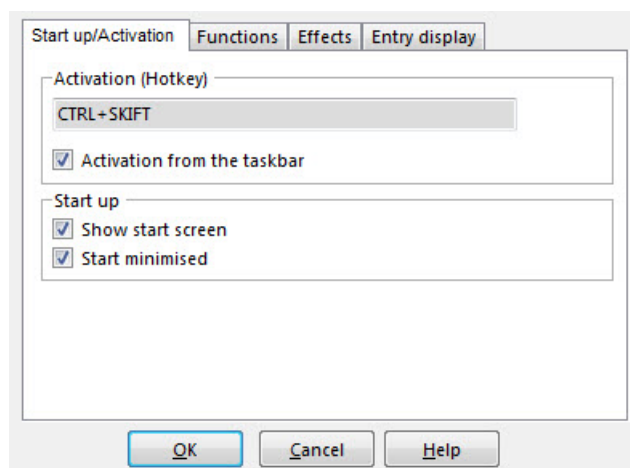
- User dictionaries
- Notes
- Glossary test
- Copy special
- Easy Reader.

# Configure WordFinder Pro

Under **Tools | Program settings | Configuration**, you can modify WordFinder Pro to suit your working environment. This section covers features relating to the configuration of the software, as well as menu language and password options.

## Configuration

The **Configuration** dialog window contains 4 tabs:



### Start up/Activation

#### Activation (Hotkey)

Here you can define which keyboard combination should be used to activate (display) WordFinder Pro. The default key combination (Hotkey) is **Left Ctrl+Left Shift** (displayed as **CTRL+SHIFT** above).

The keyboard combination must consist of either the **Alt** or **Ctrl** key followed by one or two user-defined keys. Examples of correct hotkeys are **Alt+Shift+F2** and **Ctrl+W**, while **Shift+F3** is incorrect.

To change a current activation key combination, place the cursor in the **Hotkey** field and then press the key combination you want.

#### NOTE!

You cannot enter the different parts of your key combination separately e.g. **Alt** followed by **F10**. You must first press the **Alt** key, and without releasing it, then press the **F10** key.

If you would like to activate WordFinder Pro from the taskbar, select the **Activate from taskbar** option.

## Start up

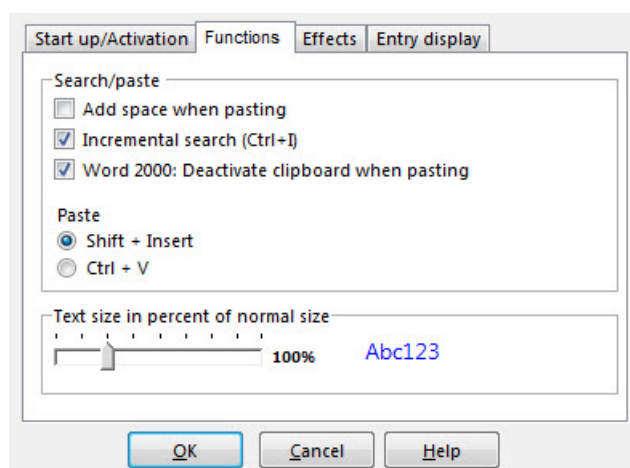
Uncheck **Show start screen** if you do not want to display the WordFinder Pro splash screen when the program starts.

You can decide to start the program in minimised mode, making it available in the background as an icon in the taskbar. If this is the case, check the **Start minimised** option. The program appears as the WordFinder Pro icon in the taskbar.

You can activate WordFinder Pro by either clicking on the WordFinder Pro icon in the taskbar or by keying in the hotkey combination.

## Functions

This tab contains the following options:



### Search/paste

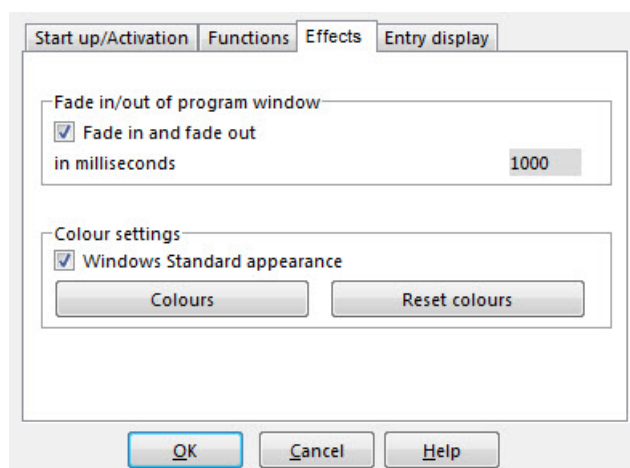
The first option here allows you to include a space after each pasted word or phrase. You can also set WordFinder Pro to carry out searches after each key press (Incremental search). It is also possible to deactivate the clipboard in Word 2000.

### Text size in percent of standard size.

Variable adjustment of text size in WordFinder Pro.

## Effects

This tab contains the following:



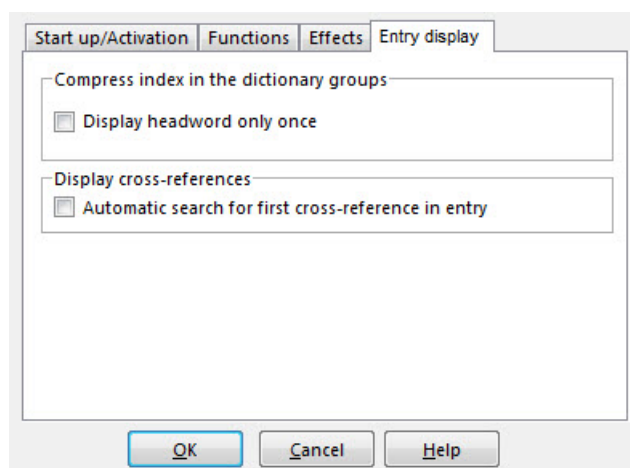
It is possible, in a pleasant fashion, to fade in and out both the WordFinder Pro program window and the Writing Assistance dialog. Select **Fade in and fade out** to activate this option. In the case of Writing Assistance, it is also possible to set the delay time before the dialog window is displayed after you have stopped writing, as well as the deactivation delay time once you begin writing again.

In WordFinder Pro you can choose the appearance of WordFinder Pro's program window and dialogue windows. You can choose to have the WordFinder appearance or the Windows standard appearance.

Use the **Colours** option to set background colours in the entry window. Searched words will be highlighted in this background colour. Select **Reset colours** to return to default settings.

## Entry display

The following options are available on this tab.



### Compress index in dictionary groups

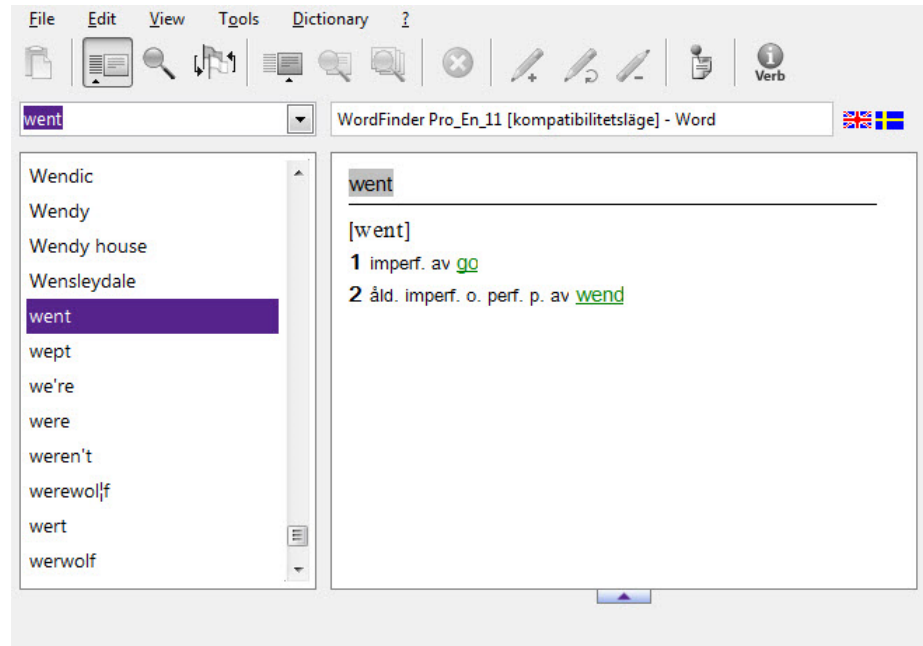
Once you have created dictionary groups, you can choose to display the search results in compressed programmed form or uncompressed form. Compressed form is

standard. You activate or deactivate the feature by selecting **Display head word only**. In compressed form, a headword indexed in several dictionaries is displayed only once, instead of the exact number of times it appears in the various dictionaries. Refer to *How to use WordFinder Pro* to learn how the software interacts with installed or user dictionaries.

### Display cross-references

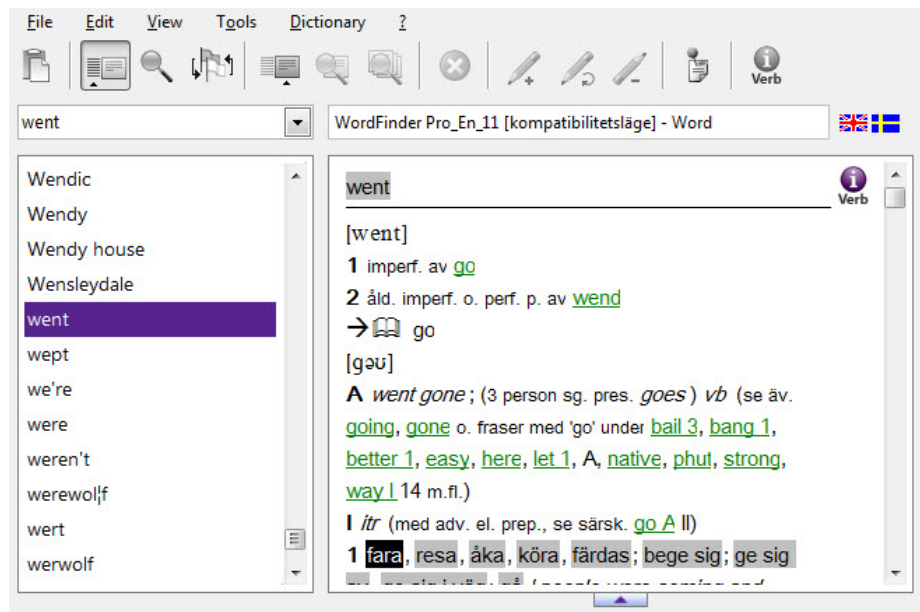
If you carry out a search for an irregular verb in WordFinder Pro, the corresponding entry contains a link or cross-reference to the infinitive form. Clicking on this link takes you to a description of the infinitive verb form. Check **Automatic search for first cross-reference in entry**, if you however would like to include this description with an entry when a search is carried out.

The following screen shot shows this feature if this option is *not* checked:



The following screen shot shows this feature if this option is checked:





## Language

Under **Tools | Program settings | Language**, you can select which menu language to use in WordFinder Pro. All menus and the working interface are altered.

## Change password

If you password protected a user dictionary or a company note, select this menu to alter each password.

### Dictionaries

Do as follows to reset a user dictionary password.

1. Select the dictionary for which you wish to alter the password.
2. Open **Tools | Change password | Dictionary**.
3. Enter the current password and click **OK**.
4. Enter the new password and click **OK**.
5. Confirm the new password by entering it again and click **OK**.

### Company notes

Do as follows to reset a company note password.

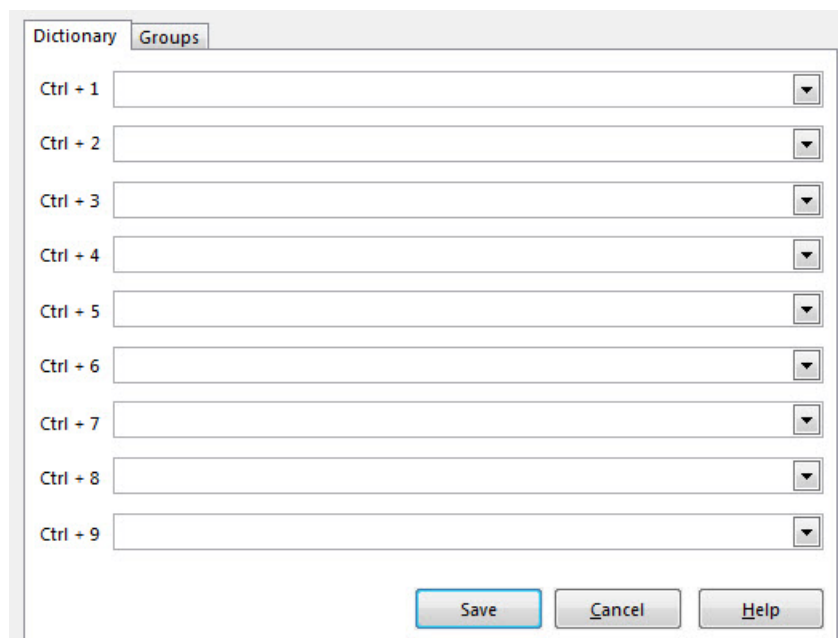
1. Find the word linked to the note.
2. Open **Tools | Change password | Company note**.
3. Enter the current password and click **OK**.
4. Enter the new password and click **OK**.
5. Confirm the new password by entering it again and click **OK**.

# Dictionary management

The **Dictionary Management** menu contains all the necessary dictionary setting options:

## Shortcut commands

The following dialog window opens when you select **Shortcut commands**:



The screenshot shows a dialog window titled "Dictionary Management" with two tabs: "Dictionary" and "Groups". The "Groups" tab is selected. It contains nine rows, each with a label "Ctrl + 1" through "Ctrl + 9", an empty text input field, and a small downward-pointing arrow button. At the bottom of the dialog are three buttons: "Save", "Cancel", and "Help".

## Dictionaries

This tab allows you to define hotkeys for nine different dictionaries.

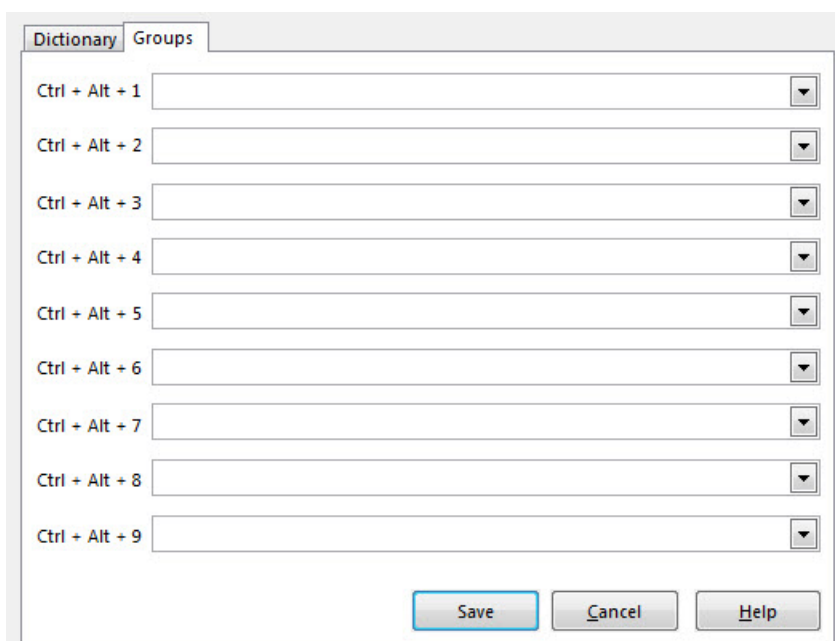
When you have set these shortcut commands, you can easily alternate between dictionaries by using these hotkeys instead of opening the **Dictionary** menu.

Do as follows to define a shortcut command for a dictionary:

1. Decide which command you want to use.
2. Click on the drop-down list button to the right of the field.
3. Select a dictionary from the list.
4. Click **Save** when you have defined all shortcut commands.

## Groups

This tab allows you to define hotkeys for nine different dictionary groups.



The screenshot shows a dialog box titled "Dictionary" with a "Groups" tab selected. The dialog contains nine rows, each with a label "Ctrl + Alt + 1" through "Ctrl + Alt + 9" and a corresponding empty text field with a drop-down arrow on the right. At the bottom right, there are three buttons: "Save", "Cancel", and "Help".

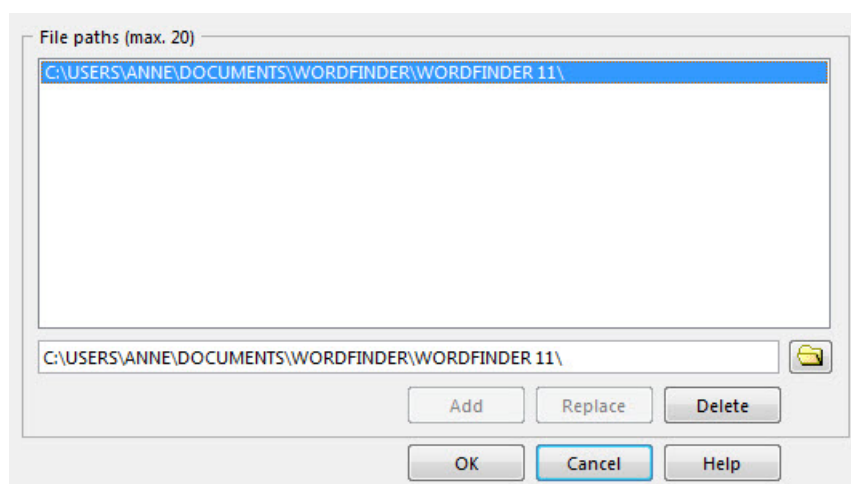
When you have set these shortcut commands, you can easily alternate between dictionary groups by using these hotkeys instead of opening the **Dictionary | Groups** menu.

Do as follows to define a shortcut command for a dictionary group:

1. Decide which command you want to use.
2. Click on the drop-down list button to the right of the field.
3. Select a dictionary group from the list.
4. Click **Save** when you have defined all shortcut commands.

## File paths to dictionaries

Here you can enter the file paths to the folders where your dictionaries are stored.



The list can contain up to 20 different file paths. Do as follows to include a file path.

1. Click on the folder icon.
2. Browse to and select a folder that contains a dictionary.
3. Click **OK**.

The file path is now shown in the text field. From here you either add the path as a new file path or replace a file path already listed.

Do as follows to add the file path:

4. Click **Add**.

If, on the other hand, you wish to replace a file path, do as follows:

4. Select the file path to be replaced.
5. Click **Replace**.

Do as follows to remove a file path from the list:

1. Select the file path to be removed.
2. Click **Delete**.

When you are finished modifying the file path list, the **Dictionary** menu is updated in line with these changes.

## Dictionary groups

This option allows you to group dictionaries that have the same linguistic base. The **Dictionary groups** function is an invaluable tool when you work with a large number of dictionaries. By merging those that belong to similar groups, you spend less time alternating between dictionaries, offering a better view of the dictionaries available.

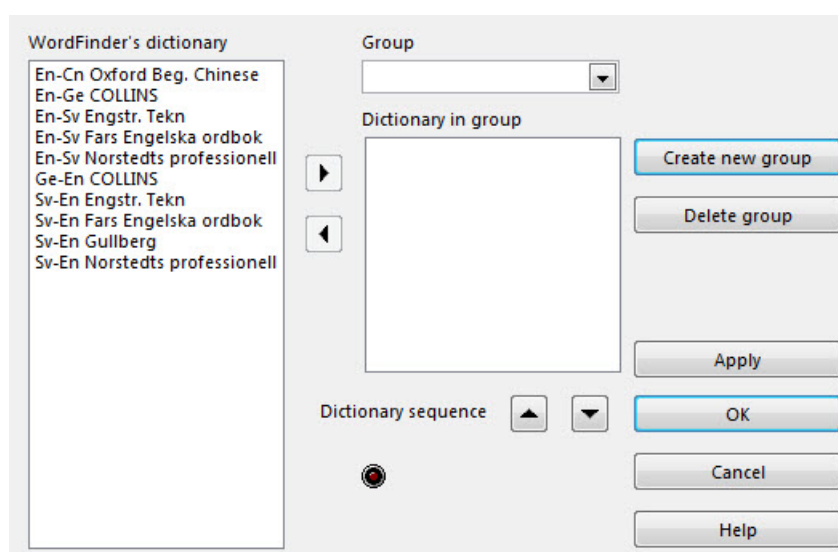
### NOTE!

It is important that you select dictionaries that have the same basic language structure when creating a group, i.e. the same alphabetical sorting for letters, if grouping is to work effectively.

How searching groups works is defined in *How to use WordFinder Pro*.

Selecting **Dictionary groups** opens a dialog window with essential information. Check the ***Do not display this message again*** box if you do not want to display this window each time you create a group. Click **OK** to continue.

The dictionary group dialog window may look as follows:



### Create a dictionary group

Do as follows to create a dictionary group:

1. Click on **Create new group**.
2. Enter the name of the group in the **Group** box. If you would like to create a group with, for example, Swedish-English dictionaries, a suitable group name would be **Swe-Eng Dictionary**.
3. Click **Apply**.
4. Choose the dictionaries from the dictionary list to be included in the group by doubleclicking those you require.

or:

4. You can select more than one dictionary at a time by using the **Shift** and **Ctrl** keys as used normally in Windows. Click on the upper arrow button when you are finished with your selection.

The selected dictionaries are then transferred to the **Dictionary in group** field. If you transferred any dictionaries by mistake, they can easily be removed from the **Dictionary in group** list by either doubleclicking them or by selecting and then clicking on the lower arrow button located between the list fields.

#### **NOTE!**

If the red warning light by **Dictionary's sorting index incorrect** flashes, an unsuitable dictionary combination has been set up, so the dictionary group has to be revised.

5. Use the dictionary sequence arrows to the right of **Dictionary sequence** to alter the order of dictionaries in the group. Select the dictionary to be moved and click on the required arrow to move it up or down the list. The sequence here defines the order in which the dictionaries are searched.
6. Click **Apply**.

Your dictionary group is now available under the **Dictionary | Groups** menu. You can define hotkeys for any groups you have created. Refer to *Shortcut commands* above.

The *How to use WordFinder Pro* section describes how to carry out a search using a dictionary group.

### **Modify a dictionary group**

Do as follows to modify any group you have created.

1. Select the group to be modified from the drop-down menu under **Group**.

The dictionaries contained in this group are now listed in the **Dictionary in group** box. Dictionaries can be added to or removed from this list as outlined above when a new group is created.

2. Modify as required.
3. Click **Apply**.

### **Remove a dictionary group**

Do as follows to remove a dictionary group:

1. Select the group to be removed from the drop-down menu under **Group**.

The dictionaries contained in this group are now listed in the **Dictionary in group** box.

2. Make sure that this is the correct dictionary to be removed.
3. Click **Remove group**.
4. Confirm removal of the group by clicking **Yes** (or **No** to prevent removal).

## User dictionaries

All organisations use in-house terminology that is not available in standard dictionaries. You can now create your own branch-related and/or corporate-specific dictionary using WordFinder Pro. The software can easily be applied to the creation of other databases such as address books, telephone directories, product listings, etc. User dictionaries are listed under the Dictionary menu in submenus based on defined language combinations.

Create your own dictionary as follows:

1. Select Tools | Dictionary Management | User dictionaries.

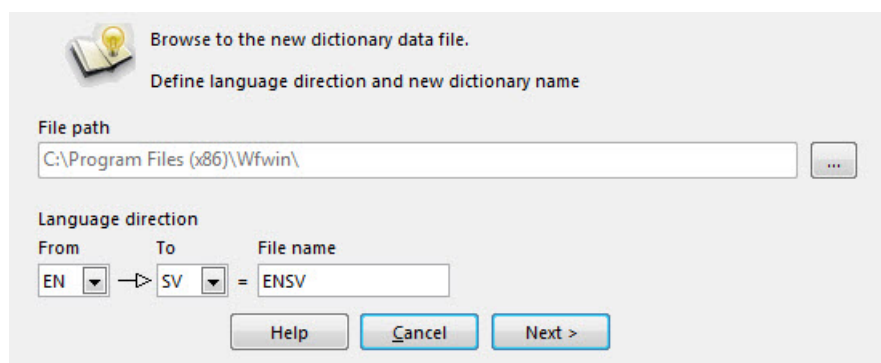
A submenu contains the options available to manage your dictionaries.

### New dictionary

Do as follows to create a new user dictionary.

1. Select Tools | Dictionary Management | User dictionaries | New dictionary from the menu or press **F4**.
2. Specify the file path to your new dictionary, i.e. define the folder where the dictionary is stored. The program suggests the file path where any other dictionaries are stored. The file path can also be set by the network administrator.
3. Define the language direction by selecting languages from the menus under **From** and **To**.
4. Enter a file name in the **File name** field. The first four characters in the file name cannot be changed, as these are based on the defined language combination,

It may look like this:



Browse to the new dictionary data file.  
Define language direction and new dictionary name

File path  
C:\Program Files (x86)\Wfwin\

Language direction  
From: EN → To: SV = File name: ENSV

Help Cancel Next >

5. Continue by clicking **Next**.

The following window is displayed:

Specify the name of your dictionary, i.e. the name which you will see in the dictionary menu etc. Also specify the owner's name.  
E.g. Swedish-English Own Translation Co. plc

Name (max. 50)

Owner (max 50 chars.)

6. Enter a suitable name for your dictionary.
7. Enter the name of the owner, which is optional.

The name cannot contain more than 50 characters. The dictionary name is shown in WordFinder Pro's window title bar and in the **Dictionary** menu, where you can select which dictionaries are activated.

8. Continue by clicking **Next**.

The following window is displayed:

Select sorting index in reference to the language your headwords are based on. You can also select and enter a password to protect your dictionary. If the dictionary is linked to a template, enter the name of the template

Sorting table

Password (max 8 chars.)   Set password

Template name   Link to template

9. Select a sorting index based on the language your dictionary will be sorted in.

**NOTE!**

The software proposes a suitable sorting index depending on the language combination that has been selected. Normally, you can accept the proposed index.

10. You can password protect your new dictionary by checking the **Password protection** box. This means that if any changes or additions are made to the dictionary, the password is required to do so.
11. If you would like to create a new dictionary using a template, check the **Link to template** box.

**NOTE!**

If you use a template to define a dictionary, all entries in the dictionary will be defined by the fields and formatting set in the template. You cannot undo a link to a template, but changes can be made to the template, to words you have added to the dictionary and any other dictionaries based on the template. Refer to *Templates* for more details.

12. Press **OK** to finish creating your new dictionary.



## Import dictionaries

It is possible to create a customised dictionary in WordFinder Pro, e.g. a specific dictionary that includes in-house company terminology or branch-related terminology. Please also refer to **Batch-add words** on how to import an Excel file.

A dictionary can be imported into WordFinder Pro by implementing the following steps: Select Tools | Dictionary Management | User dictionaries | Import dictionary.

These dictionaries have the following format:

- Text in ANSI-format.
- Entries should not be more than a maximum of 40 characters in width.
- The headword must be written on a separate line and enclosed by a @. An empty line should be included before every headword with the exception of the first one.
- Words and phrases that can be pasted by WordFinder Pro into your word processor have to be enclosed by a > and a < character.

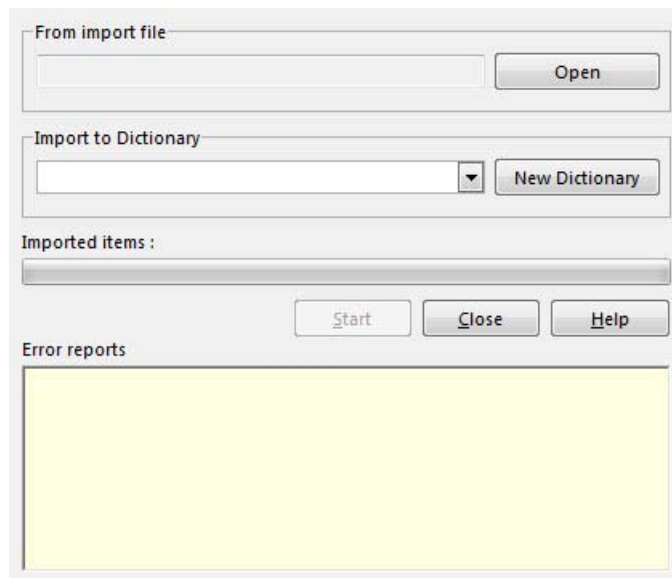
An example of what an ANSI file for import looks like:

```
@alls@
>at all<; ingenting ~ >nothing
whatever<, >nothing at all<; inget
besvär ~ >no trouble whatever<, >no
trouble at all<; inte ~ trött >not at
all tired<, >not a bit tired<
```

```
@allseende@
>all seeing<
```

If you have created a dictionary in a different program, export it from your program as an ANSI text file. Change its format in an editor or a conversion program so that the file looks like the one above and that the required control codes are used as outlined in *Control codes for importing dictionaries into WordFinder Pro* below. Import your dictionary into WordFinder Pro.

The following dialog is shown when importing a dictionary:



1. Enter the name and file path of the file to be imported in the **From import file** box. You can also define the file path and file by selecting the **Open** button.
2. In the **Import to dictionary** field, state the dictionary into which you wish to import the data. If you would like to use one of your own dictionaries, select it from the user dictionary dropdown list. You can also create a new dictionary at this point by selecting the **New dictionary** option.
3. Start importing by clicking the **Start** button.

If the dictionary in question was empty prior to importing, it will contain imported data once the import procedure is complete. If the dictionary was not empty previously, the imported data will be merged with the data already stored in the dictionary.

## Control codes for importing dictionaries into WordFinder Pro

The following is a list of all the control codes that can be used.

### Text formatting control codes

Character	Explanation
!K	Italics on
!k	Italics off
!F	Bold on
!f	Bold off
!R	Cross-referencing on (hyperlink to index with green underline)
!r	Cross-referencing off
!E	Exponent on (superscripted character with compressed text)
!e	Exponent off

!I	Index on (subscripted character with compressed text)
!i	Index off
!S07	Compressed text on, font size, 8 points
!s	Compressed text off
>	Paste on
<	Paste off
!>	Writes character > without making it pasteable
!<	Writes character <
(Alt+124)	Line break in entry
!B	Image on (file path + file name defined)
!b	Image off
!M	Activate red font colour
!m	Deactivate red font colour
!G	Activate strikethrough
!g	Deactivate strikethrough
!N00..!N15	Alternate font colour, active until turned off.
!N00	Black font
!N01	Red font
!N02	Green font
!N03	Blue font
!N04	Yellow font
!N05	Fuchsia font
!N06	Purple font
!N07	Maroon font
!N08	Lime font
!N09	Aqua font
!N10	Teal font
!N11	Navy font
!N12	White font
!N13	Lt Grey font
!N14	Grey font
!N15	Black font
!n	Turn off font colour and return to black.
!O	Turn on Ignore paste option

lo Close Ignore paste option

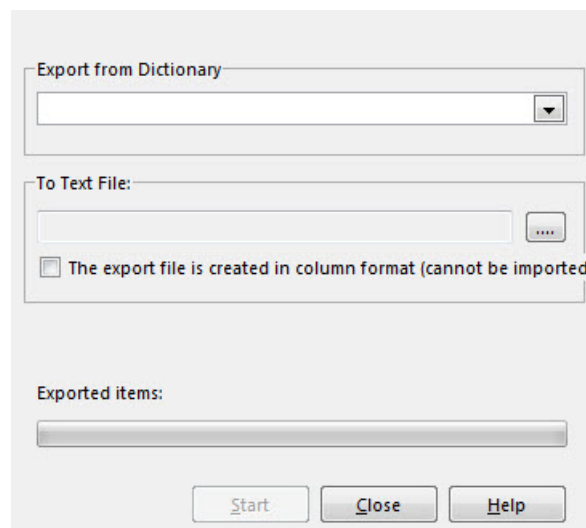
## Changing fonts

Character	Explanation
!A $\mathit{z}$	Alternate font, active until turned off.
A1	Arial
A2	Times New Roman
A3	Courier New
A4	SILDoulos IPA93
A5	TWA Phonetics
A6	Wingdings
A7	Symbol

## Export dictionaries

You can export dictionaries from WordFinder Pro via Tools | Dictionary Management | User dictionaries | Export dictionary. If you want to create a document of your dictionary, you can choose to export the dictionary in **Column format**.

The following dialog is shown when exporting a dictionary:



1. Select the dictionary you want to export from the **Export dictionary** list. Open the drop-down menu and select the required dictionary.
2. The program suggests a filename in the **To Text file** field based on the name of the dictionary being exported. It also adds the suffix 'TXT' e.g. USERWORD.TXT. You can however change the file path and file name for the text file that is being created.
3. If you do not want to import the file into WordFinder Pro again, check the **The export file is created in column format** box.

4. Start the export by clicking the **Start** button.

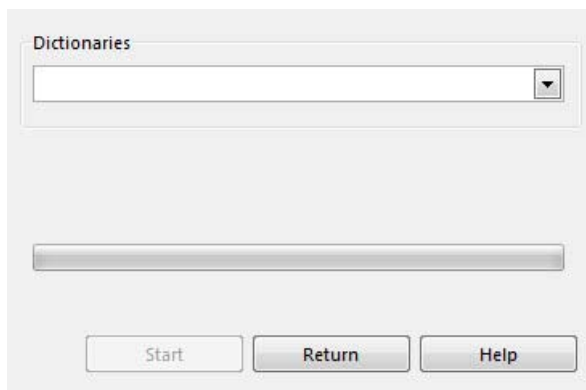
The exported file is saved in your selected folder. You can open the file in a word processor, edit it and ultimately print it.

## Reorganise a dictionary

Working with user dictionaries for longer periods of time can create empty space that can affect the performance of large dictionaries. It is now possible to reorganise the dictionary to remove these redundant spaces.

Select Tools | Dictionary Management | User dictionaries | Reorganise a dictionary.

The following window is displayed:



1. Open the drop-down menu and select the required dictionary.

The dictionary now appears in the **Dictionary** field.

2. Click **Start** to reorganise the dictionary.

If, however, you wish to cancel this operation, click **Return** to stop the reorganisation process. When the reorganisation process is finished, a dialog opens to display how many search words have been reorganised.

3. Continue by clicking **Return**.

## Delete dictionaries

User dictionaries can be removed from WordFinder Pro by selecting Tools | Dictionary Management | User dictionaries | Delete dictionary.

The following window opens:

4. Select the dictionary to be removed in the **Delete** field. Open the drop-down menu and select the required dictionary.

The **File name** field displays the files contained in the dictionary. It is these files that will be removed.

5. Click **Delete** to remove the dictionary. Note that you cannot delete a dictionary that is in use.

If, however, you wish to cancel this operation, click **Return** to stop the deletion process.

## Add Words

Do as follows to add new words to a user dictionary:

1. Choose the dictionary you want to add a word to.



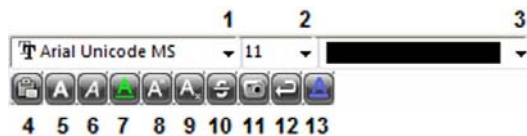
2. Click **Add word**.

You can also choose **Tools | Dictionary Management | User dictionaries | Add word** or press the **Insert** key.

3. Enter the new headword in the **New headword and entry** field.

4. In the box for explanatory text under the formatting toolbar, enter the text to be shown in the entry window. The box works as a simple word processing program. Format the text using the available menus and buttons.

You can choose from the following formatting options:



No.	Name	Functionality
1	Font	Select from a limited number of fonts.
2	Font size	Select either 11 or 8 points.
3	Font colour	Select from a limited number of colours.
4	Paste	Make content pasteable.
5	Bold	Bold style
6	Italics	Italics
7	Underline (cross-reference)	Underlined style. Used also to create a cross-reference hyperlink to a word/phrase.
8	Superscript	Superscript format, e.g. m <sup>2</sup> .
9	Subscript	Subscript format, e.g. H <sub>2</sub> O.
10	Strikethrough	Strikethrough format
11	Image	Insert a link to a BMP formatted image. A symbol is used in entries to indicate that there is an image linked into the entry content. To see the image, just click on the symbol in the entry window.
12	Line break	Insert a line break.
13	Hyperlink	Turn the selected URL into a hyperlink.

When you are finished formatting the entry, do as follows:

5. Click **Apply**.

Now you can insert another headword in the same way. Do as follows to close the dialog window when you have added all headwords.

6. Click **OK**.

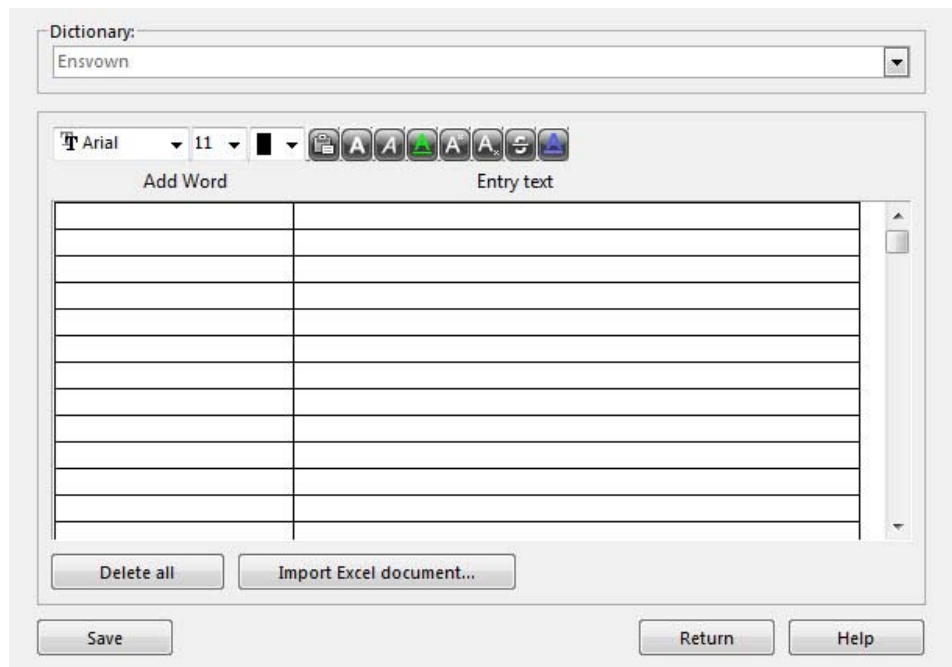
Click Cancel if you want to close the dialog window without saving your changes.

## Batch-add words

Use this option if you wish to add a large number of new words or import an Excel list of words. Do as follows to add new words to a user dictionary:

1. Choose the dictionary you want to add a word to.
2. Select **Tools | Dictionary management | User dictionaries | Serienmatning** or press **Ctrl+Insert**.

The following window is displayed:



Here you can enter the words in the table and format them or import an Excel file containing a word list. Every time you save, the words inserted in the table are added to your dictionary. If you add or import a duplicate word, it is also added to the dictionary. Existing words are not replaced.

If for some reason you would like to delete all the words in the table, then click on **Delete all**.

### **Enter words directly**

You can add up to 300 words without saving (but we do recommend that you save more often). Do as follows:

1. Enter the search word in the **New word** field.
2. Enter entry content for the search word in the **Entry text** box. The box functions as a simple word processing program. Format the text using the available buttons. Press **Enter** to insert a line break.



You can choose from the following formatting options:



No.	Name	Functionality
1	Font	Select from a limited number of fonts.
2	Font size	Select either 11 or 8 points.
3	Font colour	Select from a limited number of colours.
4	Paste	Make content pasteable.
5	Bold	Bold style
6	Italics	Italics
7	Underline (cross-reference)	Underlined style. Used also to create a cross-reference hyperlink to a word/phrase.
8	Superscript	Superscript format, e.g. m <sup>2</sup> .
9	Subscript	Subscript format, e.g. H <sub>2</sub> O.
10	Strikethrough	Strikethrough format
11	Hyperlink	Turn the selected URL into a hyperlink.

When you are finished adding and formatting the entry, just continue with the next one. Do as follows to save a word that you have added:

3. Click **Save**.
4. Continue by clicking **Return** when you are finished.

### Import an Excel file

It is possible to import an Excel file where the entries are inserted in the A column and the entry text in the B column. The file can contain up to 300 words. If the Excel file contains more than 300 words, it will have to be divided into smaller files that are imported separately.

Entry content can be formatted using the control codes for importing dictionaries (as outlined earlier). Imported words can also be formatted in the same way as described in the section about direct insertion above.

Do as follows to import an Excel file:

1. Revise the Excel file, if required, so that it only includes the words that are to be imported.
2. Click on **Import Excel file**.
3. Browse to the Excel file in the Open dialog and select it. Continue by clicking **Open**.

The content in the Excel file is now imported into the table.

4. Use the toolbar to further format the content if required.
5. Click **Save**.

6. Continue by clicking **Return** when you are finished.

## Edit Words

Do as follows to edit a word or an entry in a user dictionary:

1. Click on the headword if it is not already selected.
2. Click the **Edit word** button.



You can also choose from the menu **Tools | Dictionary Management | User dictionaries | Edit word** or press **F3**.

The headword and entry are shown and you can edit the text as described in the *Add word* section. You can also rename the dictionary.

3. Click **OK** when editing is complete to save the changes to the dictionary.

### Edit entry content on the fly

Any errors in entry content for a word in a user dictionary can be quickly revised directly in the entry window. Password protected dictionaries require however a password to edit the content.

Do as follows when the entry content is displayed in the entry window:

1. Press **F3**.

The entry window is transformed into edit mode.

2. Make any required changes. Content can be edited as described in the *Add words* section above.
3. Click **OK** to save changes or **Cancel** to undo any changes.

## Delete Words

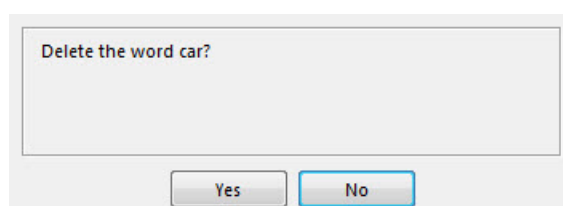
Do as follows to remove a headword:

1. Click on the headword if it is not already selected.
2. Click **Delete word** button.



You can also choose **Tools | Dictionary Management | User dictionaries | Delete word** or press the **Delete** key.

A dialog window opens as follows:



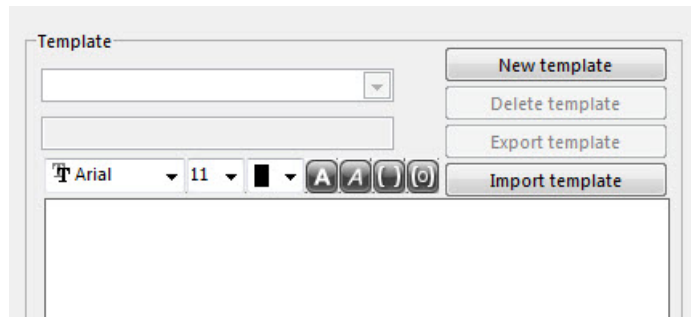
3. Click **Yes** if you want to delete the word or **No** to keep it in the dictionary.

## Templates

How content and colour schemes are defined for entries in a user dictionary can be set by a template that has a predefined structure and format. User dictionary templates are created by selecting

Tools | Dictionary Management | User dictionaries | Templates.

You can choose from the following options:



### Create a template

Do as follows to create a new template:

1. Click on **New template**.
2. Enter a suitable name for your template. Note that when a template-based dictionary is exported, the proposed name for the export file is based on the name of the original template. It is therefore important to refrain from using unusual characters in the template name.
3. Click **Save template**.

The template is now visible in the **Template** list. Continue by defining a structure for the entry window. You can use any standard text format. Using the formatting toolbar, you can insert entry text fields or pasteable entry text fields, as well as apply format to both text and fields.

You can choose from the following options:

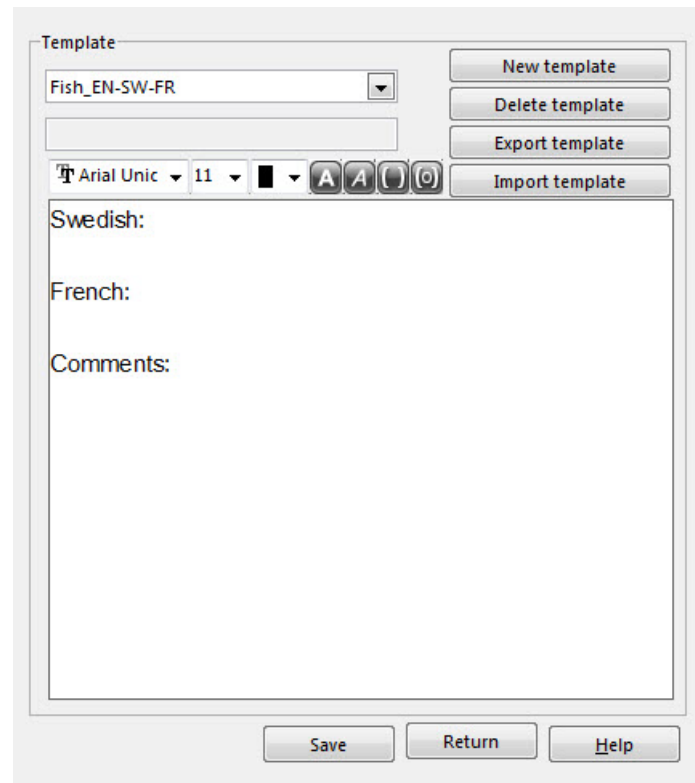


No.	Name	Functionality
1	Font	Select from a limited number of fonts.
2	Font size	Select either 11 or 8 points.
3	Font colour	Select from a limited number of colours.
4	Bold	Bold style
5	Italics	Italics
6	Insert field	Insert field for entering text.
7	Insert paste field	Insert field for pasteable text.

You can work in any order you like. The following shows an example of how this process of creating a template may look:

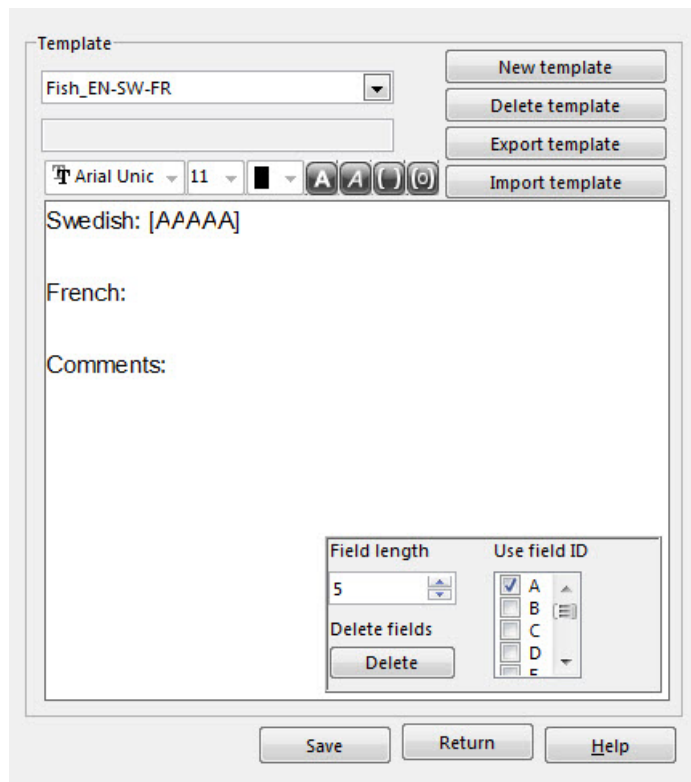
1. Enter prompt texts for fields.

The dialog window may look as follows when you are finished:



2. Place the cursor where you would like to insert the first field and then click on the button for this field type. In the example shown here, a pasteable field has been inserted for the top three prompt texts, while the last prompt refers to a standard text field.

When a field is inserted or selected, a new dialog window opens where you can define field length and tab order settings. It is also possible to delete the field at this point. Below is a screen shot of how this window may look:

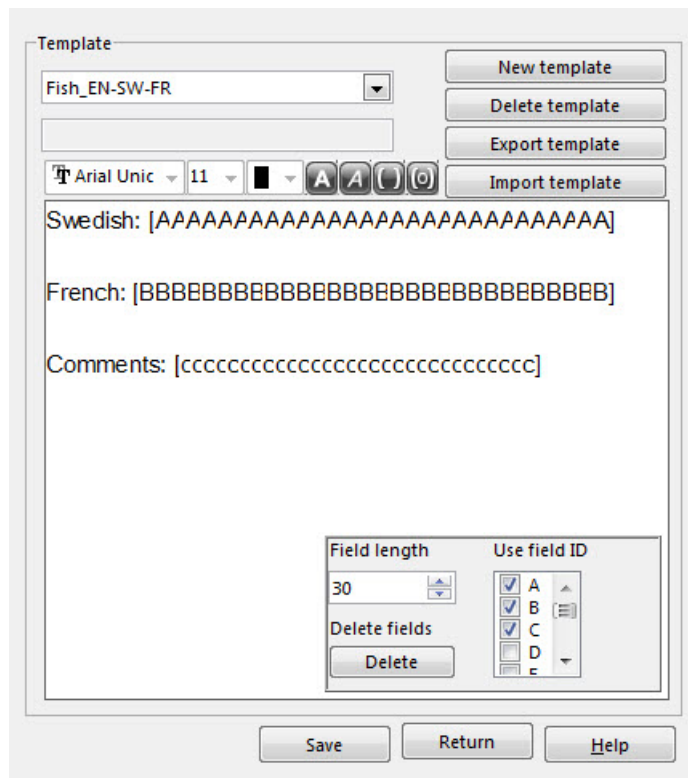


Click on the arrows to the right of the field length to define how many characters can be entered in the field. The **Use field ID** option lets you set tab order, where A is the first field, B the second and so on.

A selected field can always be removed by clicking **Delete**.

3. Define field length and tab order.
4. Add in the remaining fields as required.

The dialog window may look as follows when you are finished:



The top three fields, which are pasteable, are denoted by capital letters, while the last field, which is not pasteable is specified by lower-case letters.

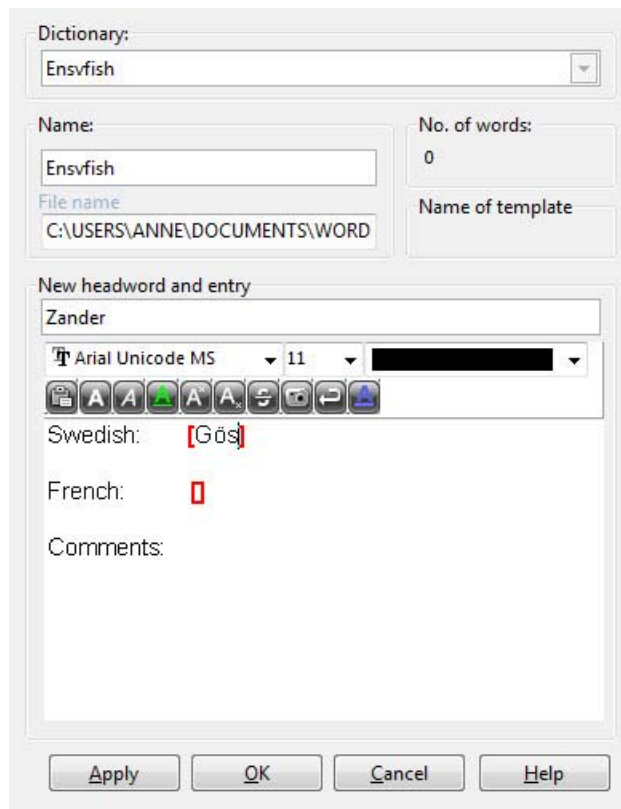
If you wish to edit fonts, font size, colour or format style, select the content and click on the required button in the toolbar. If you want to change the format of a field, the entire field has to be selected.

Text can be erased by pressing the **Backspace** or **Delete** key.

Continue as follows once the template is finished:

5. Click **Save**.

When inserting new words and phrases in user dictionaries that are template-based, the template defines what you can work with. The following dialog window shows how the template we have created may look:



Enter a word or phrase in the **New headword or entry** field in the same way as with a standard user dictionary, but in this case, content and how the different fields in the entry are formatted is completely defined by the template. Here all buttons in the toolbar are greyed out.

You can browse forward between fields by pressing the **Tab** key or backward by pressing **Shift+Tab**. Pasteable fields are highlighted with bold angle brackets. Compare the upper three fields with the bottom non-pasteable field.

### Edit a template

Contents in an existing template can be edited as follows:

1. Select Tools | Dictionary Management | User dictionaries | Templates.
2. Select the template you wish to edit from the **Template** list.

The existing template is displayed. All content and fields can be edited in the same way as described above when defining a new template.

3. Modify as required.

#### NOTE!

If a field is removed, it is essential that this field is not linked to any information in a dictionary based on this template. If you remove a field in use by dictionaries based on this template, you will not be able to access these dictionaries.

4. Click **Save**.

Changes in a template influence all entries in all user dictionaries based on this template.

## Delete a template

A template not in use can easily be deleted.

1. Select Tools | Dictionary Management | User dictionaries | Templates.
2. Select the template you wish to delete from the **Template** list.

The existing template is displayed.

3. Make sure that this is the correct template to be deleted.

### NOTE!

It is essential to make sure that the template is not being used by a dictionary. If a template, being used by a dictionary, is deleted, the dictionary will not function.

4. Click **Delete template**.
5. Click **Yes** to confirm deletion or **No** if you do not wish to delete the template.

## Export a template

A template can be exported to a file to make it accessible to other users who can import it into their WordFinder Pro program. Do as follows to export:

1. Select Tools | Dictionary Management | User dictionaries | Templates.
2. Select the template you wish to export from the **Template** list.

The existing template is displayed.

3. Make sure that this is the correct template to be exported.
4. Click **Export template**.

In the following dialog window, enter a name for the file and browse to where it is to be saved.

5. Enter a file name. Make sure that the file suffix is not altered. It has to be in TPL format.
6. Open the folder where the file will be saved.
7. Click **Save**.

## Import a template

A template created by another user can be imported into your program. Do as follows to import a template:

1. Select Tools | Dictionary Management | User dictionaries | Templates.
2. Click on **Import template**.

Browse for the file in the dialog window that opens.

3. Open the folder that contains the template file.
4. Select the template file to be imported.
5. Continue by clicking **Open**.

Repeat this procedure if there are more templates that you wish to import.



## NOTE!

Templates must have unique file names. If you import a template with the same name as a template in your computer, you will be asked if you wish to replace the current template. Answer **Yes** or **No** depending whether or not you want to replace the existing template in use by WordFinder Pro.

## Create a note

Use the **Create note** button if you would like to include a note with an entry in a dictionary of your choice.



1. Select the headword you wish to create a note for.
2. Click **Create a note** in the toolbar.

You can also select Tools | Dictionary Management | Create a note or press **Ctrl+Q**.

The following window is displayed:

1. Type your notes for the entry in the field below.  
2. Choose a suitable colour for your note.  
3. Click the Save button.

Headword

Note category

Help Advanced... Save Cancel

3. Enter the entry note and select a suitable text colour. Different types of notes can be highlighted with different colours.
4. If this is the first time a note is created, the program prompts you to create a note file. Confirm this by clicking **Yes**.

Under the **Advanced** menu, you can define whether notes are accessible only to you or to the entire company as a company note.

A **Personal note** is individual for each user and is saved locally on the user's computer.

A **Company note** can be read by all network users. This type of note is password protected and is stored in a network folder. The network administrator has to enter another file path for this folder in the WFSYSTEM.INI file, which is stored in the folder where WordFinder Pro was installed.

- Click **Save**. An icon has been created to indicate a note exists for this entry. Note that the colour of the pin in the note corresponds to the initial colour you selected.

### Read note

- Find the word and the entry that includes the note.
- Click on the note icon to view the note.

You can also read the note when the cursor is placed over the note.

### Edit note

- Find the word and the entry that includes the note.
- Right click on the note icon.
- Select **Edit**.
- Make the required changes in the note and press **Save**.

### Delete note

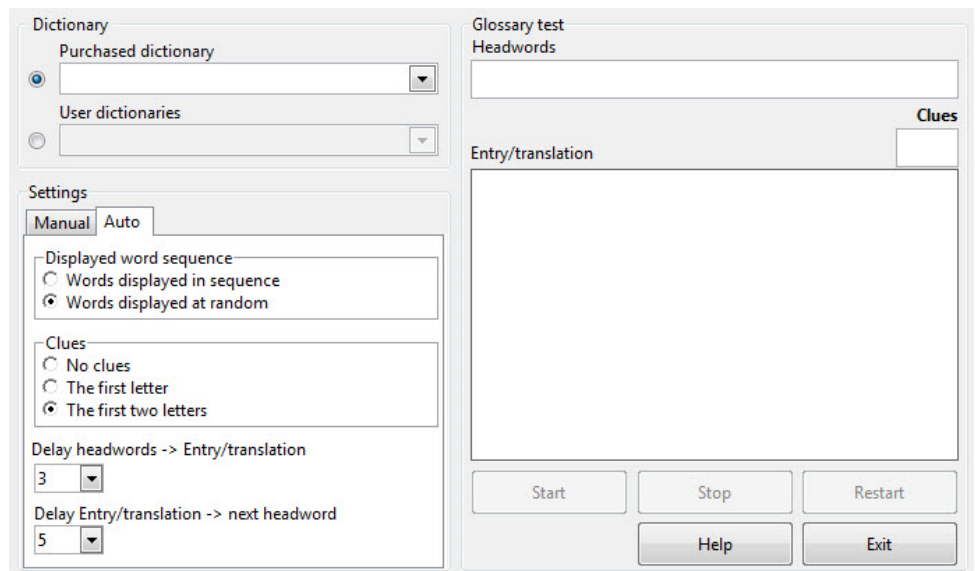
- Find the word and the entry that includes the note.
- Right click on the note icon.
- Select **Delete**.
- Confirm the removal of the note.

## Glossary test

Challenge relatives, friends and colleagues to a word game or learn new words using the program's glossary test!

Select Tools | Dictionary management | Glossary test.

The following window is displayed:



1. Begin by deciding whether you want to use a purchased or user dictionary. Do not forget that it is very easy to create your own dictionary where you can include the glossary list you want to test.
2. Open the drop-down menu and select the dictionary you want to use.
3. Make any settings changes as your require.

In **Manual** mode, you have to click on **Next word** to browse to the next word in the dictionary and click on **Show entry** to display entry content (explanation). The **Auto** mode browses automatically through words and explanations at a speed in seconds set by you.

Word sequence can be defined either according to the order in the dictionary or at random and you can also set the test to display clues.

4. In **Manual** mode, click **Next word** followed by **Show entry** once you or your test rivals have tried to guess a word.

or:

4. If you have selected **Auto**, click **Start** to initiate the test and **Stop** to stop the test. Select **Restart** if you want to start the test again. If you feel that the test runs too fast, you can easily slow it down by increasing the number of seconds in the delay box.
5. Close the dialog window when you are finished with the test.

# Shortcut commands

<b>Press</b>	<b>To</b>
<b>Ctrl+Left Shift</b>	Activate WordFinder Pro. <b>NOTE!</b> Can be modified in <b>Program settings</b> .
<b>Alt+F4</b>	Exit WordFinder Pro when it is active.
<b>Ctrl+n</b>	Select a dictionary. Dictionary hotkeys are <b>Ctrl+n</b> , where n = 1 to 9. The hotkeys are defined by selecting Tools Dictionary Management Shortcut commands.
<b>Ctrl+Alt+n</b>	Select a dictionary group. Dictionary group hotkeys are <b>Ctrl+Shift+n</b> , where n = 1 to 9. The hotkeys are defined by selecting Tools Dictionary Management Shortcut commands.
<b>Ctrl+A</b>	Entry search.
<b>Ctrl+F3</b>	Open the Edit words dialog.
<b>Ctrl+G</b>	Open the dialog window for dictionary groups.
<b>Ctrl+Insert</b>	Open the Batch-add dialog window.
<b>Ctrl+L</b>	Open the dialog window for shortcut commands.
<b>Ctrl+P</b>	Open the settings dialog window.
<b>Ctrl+T</b>	Turns the search after each key press function on or off.
<b>Ctrl+Q</b>	Create a note
<b>Delete</b>	Remove headwords from active user dictionaries.
<b>End</b>	Jumps to the last word in the list of headwords.
<b>Enter</b>	Search for headword entered by a user.  or  Pastes the word or phrase, highlighted in the entry window, into your document
<b>Esc</b>	Minimise WordFinder Pro.
<b>F1</b>	Start Windows Help and help topics for WordFinder Pro
<b>F3</b>	User dictionaries: Edit entry. The edit mode dialog opens in the entry window.
<b>F4</b>	User dictionaries: New dictionary
<b>Home</b>	Jump to the first word in the list of headwords.
<b>Insert</b>	Add headwords to active user dictionaries.
<b>Arrow right</b>	Browse to the right in the entry window
<b>Arrow left</b>	Browse to the left in the entry window
<b>Page Down</b>	Scrolls down one page in the list of headwords.

<b>Page up</b>	Scrolls up one page in the list of headwords.
<b>Arrow down</b>	Scrolls down the list of headwords one word at a time. If the <b>Search</b> box is selected, browse down the history list one word at a time.
<b>Arrow up</b>	Scrolls up the list of headwords one word at a time. If the <b>Search</b> box is selected, browse up the history list one word at a time.
<b>Shift+F10</b>	Show <b>Dictionary</b> menu.
<b>Tab</b>	Alternate between Search box and the headword window.